

FEATURES

- ◆ SWING OUT ARMREST ◆ SLIDING FOOTREST ◆ ANTI-TIP DESIGN ◆ DUAL BRAKES ◆ CORROSION RESISTANT MESH ◆ STAINLESS STEEL HARDWARE ◆ ONE YEAR WARRANTY

CLICK HERE TO VIEW THIS PRODUCT:  
<https://aquacreekproducts.com/>

TOLERANCES

DIMENSIONS ARE IN INCHES  
UNLESS OTHERWISE SHOWN  
FRACTIONAL: ..... ±1/16  
ANGULAR: ..... ±1°  
TWO PLACE DECIMAL: .... ±.01  
THREE PLACE DECIMAL: .. ±.005

BREAK & DEBURR ALL SHARP EDGES



9889 GARRYMORE LANE  
MISSOULA, MT 59808  
(406) 549-0769  
FAX (406) 549-2602  
[www.AquaCreek.com](http://www.AquaCreek.com)

© 2021 AQUA CREEK PRODUCTS. ALL RIGHTS RESERVED.

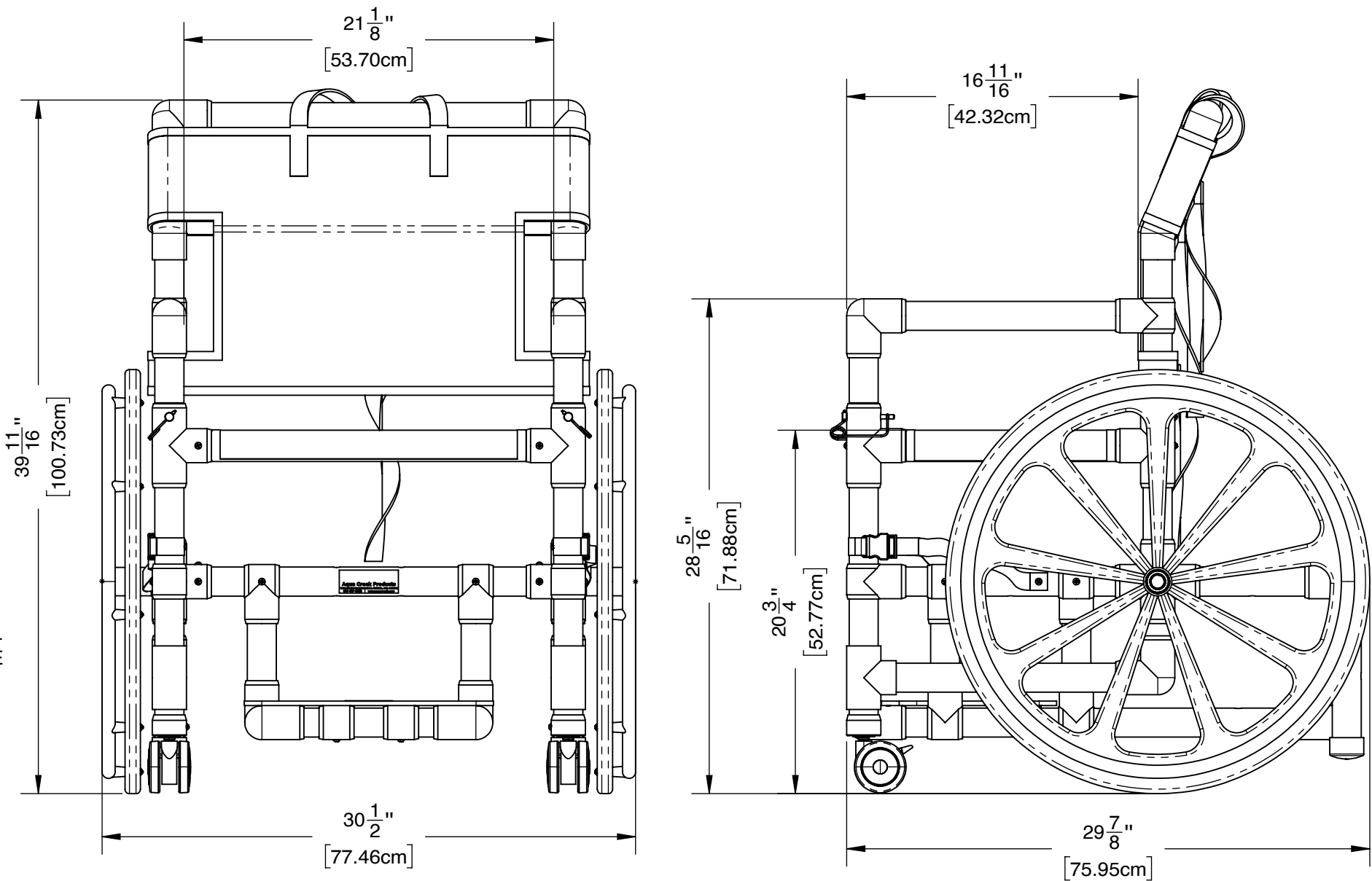
PROPRIETARY AND CONFIDENTIAL INFORMATION

THIS DRAWING AND ALL INFORMATION CONTAINED HEREIN  
IS THE SOLE PROPERTY OF AQUA CREEK PRODUCTS LLC. ANY  
REPRODUCTION IN PART OR AS A WHOLE WITHOUT WRITTEN  
PERMISSION FROM AQUA CREEK IS PROHIBITED.

\*SPECIFICATIONS ARE SUBJECT TO CHANGE WITHOUT NOTICE

SPECIFICATIONS:

THE PVC POOL ACCESS CHAIR WITH 21 INCH WIDE MESH SEAT SHALL BE CONSTRUCTED OF HEALTH CARE GRADE PVC PIPE AND FITTINGS THAT WON'T RUST OR STAIN. IT WILL BE RATED FOR 350 LBS. [159 KG.]. THE CHAIR SHALL COME EQUIPPED WITH AN EXTENDABLE FOOTREST. THE MESH SEAT SHALL BA A MINIMUM OF 21 INCHES WIDE AND UPHOLSTERED FROM MOLD AND MILDEW RESISTANT MATERIAL THAT IS SUITABLE FOR IMMERSION IN A POOL OR SPA. THE CHAIR SHALL COME EQUIPPED WITH DUAL LOCKING BRAKES AND SWING AWAY ARMRESTS TO ALLO FOR EASY TRANSFERS. THE REAR WHEELS SHALL BE A NON-SKID STYLE WITH USER HAND RINGS. THE CASTERS SHALL BE 3 INCH DIAMETER MRI RATED SWIVEL TYPE.



POOL ACCESS CHAIR - 21"

CATALOG NO. F-520WSPM

PART NO. INV02456

WEIGHT CAPACITY: 350lbs. [158.75kg.]

MATERIAL: PVC/MESH  
FINISH: WHITE  
APPROX. WEIGHT: 67.06 LBS.

REVISIONS			
REV.	DESCRIPTION	DATE	APPROVED
P1	INITIAL RELEASE	3/1/2021	J.MAXWELL

MODEL  
P1  
REVISION

POOL ACCESS CHAIR - 21" - INV02456

SCALE  
1:8

SHEET  
1