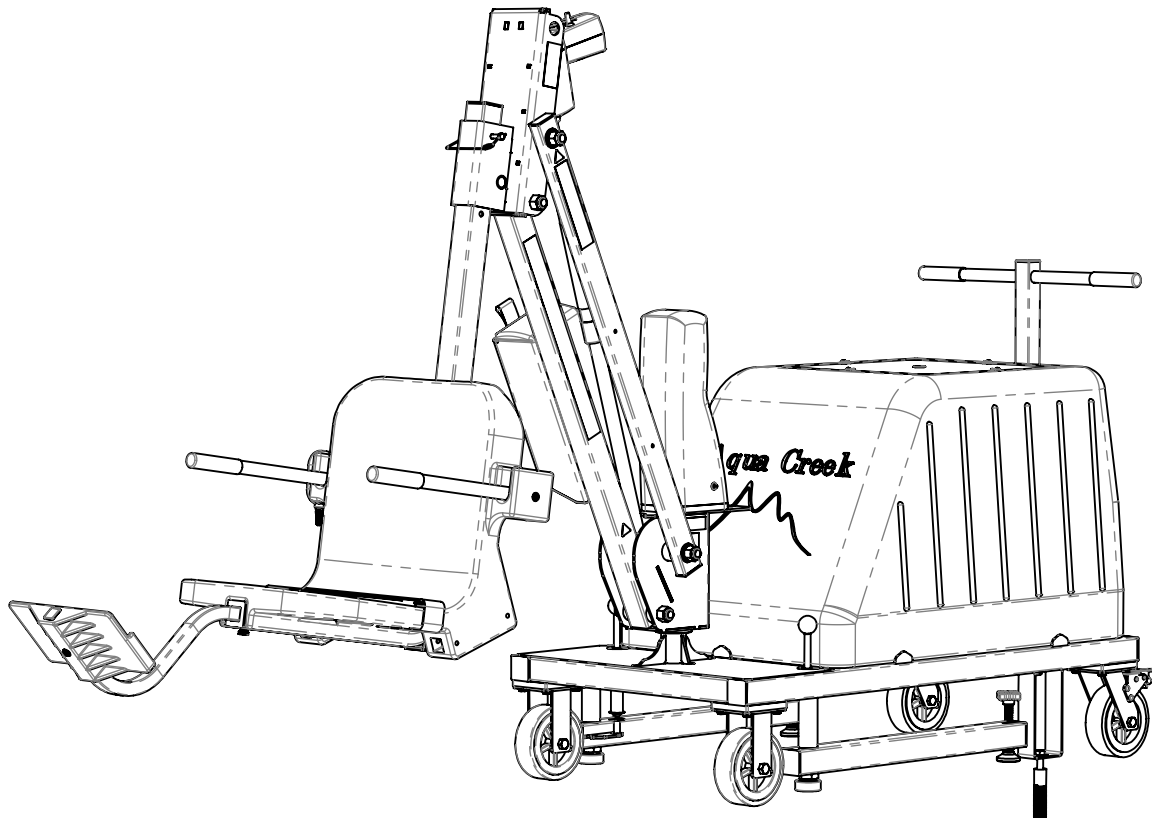




USE THIS MANUAL FOR CATALOG #'S:
F-VGRPL / F-VGRPL-G / F-VGRPL-T / F-VGRPL-W / F-VGRPL-C
INSTALLATION & OPERATION MANUAL

MODEL: MIGHTY VOYAGER
CATALOG #: F-VGRPL



RECORD YOUR LIFT'S
SERIAL NUMBER HERE:

1

UPDATED:
2 - 8/19/2025

WWW.AQUACREEK.COM
© 2024 AQUA CREEK PRODUCTS. ALL RIGHTS RESERVED.

9889 GARRYMORE LANE
MISSOULA, MT 59808
(406) 549-0769
FAX (406) 549-2602

TABLE OF CONTENTS

SAFETY INFORMATION.....	3
ADA REQUIREMENTS FOR POOL LIFTS (US ONLY).....	4
PRODUCT OVERVIEW AND APPLICATIONS.....	5
PRODUCT COMPONENTS.....	6
PRODUCT ASSEMBLY.....	16
OPERATION INSTRUCTIONS.....	20
MAINTENANCE INSTRUCTIONS.....	21
ANNUAL INSPECTION.....	22
BASIC TROUBLESHOOTING.....	26
WARRANTY INFORMATION.....	27



IMPORTANT SAFETY INFORMATION



Safety & Installation Instructions

When installing this product, always follow basic safety precautions, including the following:

READ ALL INSTRUCTIONS BEFORE USE

WARNING – To Reduce the Risk of Injury: Children and individuals with reduced physical, sensory, or mental capabilities, or those lacking experience or knowledge, should not use this product unless closely supervised or instructed by a responsible person.

Electrical Safety:

A wire connector is provided on all bondable anchors to connect a minimum 8 AWG (8.4 mm²) solid copper conductor to an equipotential bonding system as per NEC Article 680.82.

Maintenance & Inspection:

Periodically check the appliance for signs of wear or deterioration. Ensure all nuts, bolts, and screws are tightened to maintain safe operation.

Signage Requirement:

Affix the provided 'ADA POOL/SPA LIFT' sign in a position that maintains clear and unobstructed visibility from the lift at all times, in any location where ADA compliance is required.

Battery Safety:

Remove rechargeable batteries from the appliance before charging. Install batteries with the correct polarity. If the appliance will be unused for an extended period, remove the batteries and store them on the wall-mounted charger to maintain their charge. DO NOT short-circuit the supply terminals.

REDUCE THE RISK OF DROWNING:

- Never swim alone.
- Do not use the appliance to enter an empty pool.
- Do not spray water directly onto the electronics.
- Do not allow children to play on or around the appliance. Supervise children at all times.
- DO NOT jump or dive from this appliance.

Seat may become hot; use caution when sitting. Keep the appliance covered when not in use. Inspect and clean before each use.

READ CAREFULLY BEFORE INSTALLATION:

Inspect the entire box and packing materials for all necessary parts. Before assembly, carefully read the instructions and verify all parts using the provided diagrams and parts list. Inspect all components for damage before installation. If any damage occurred during shipping, notify Aqua Creek Products LLC within three (3) days of receipt. Proper installation is critical. Improper installation will void the Aqua Creek warranty and may compromise user safety.

ADA REQUIREMENTS FOR POOL LIFTS* (US ONLY)

1009.2.1 Pool Lift Location

Pool lift shall be located where the water level does not exceed 48". If entire pool water level exceeds 48", place pool lift where convenient.

1009.2.2 Seat Location

In the raised position, the centerline of the seat shall be located over the deck a minimum of 16" from the edge of the pool.

1009.2.3 Clear Deck Space

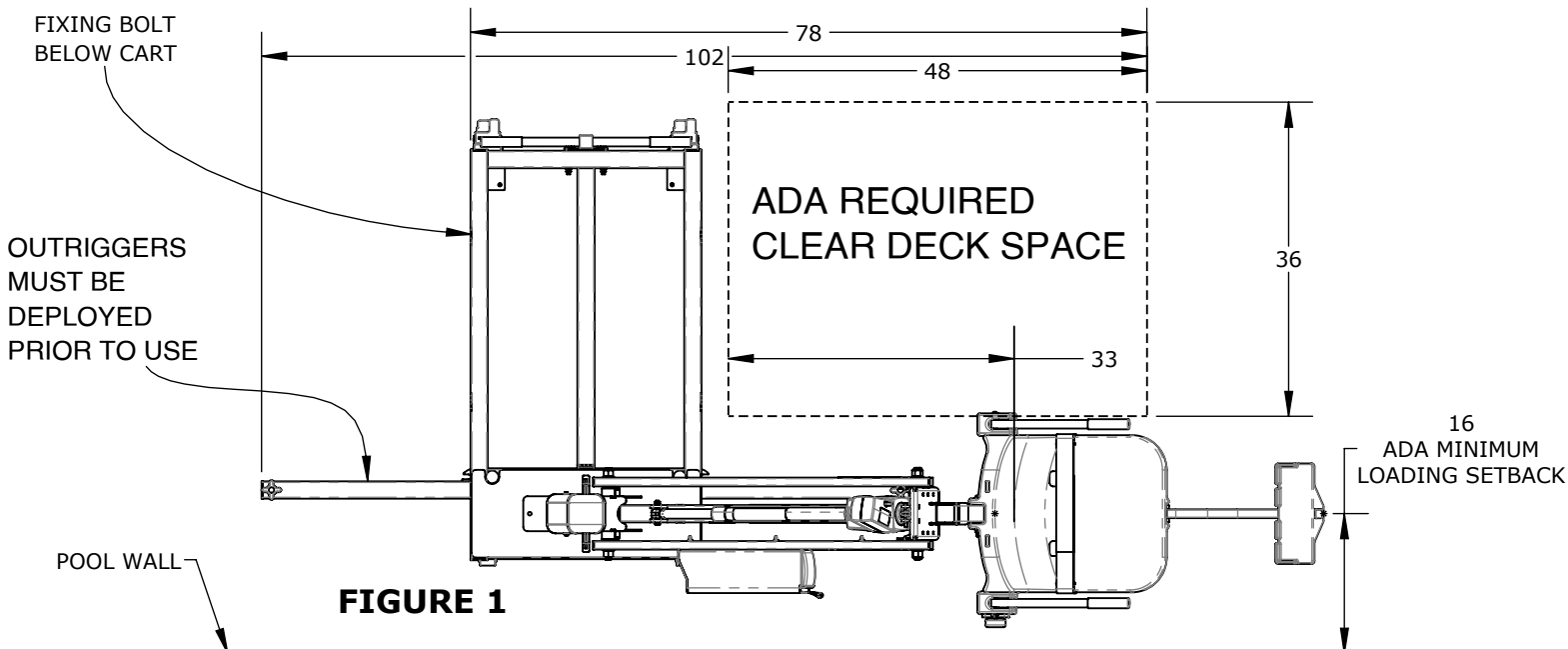
On the side of the seat opposite the water; a clear deck space shall be provided parallel with the seat. The space shall be 36" wide minimum and shall extend forward 48" minimum from a line located 12" behind the rear edge of the seat.

1009.2.4 Seat Height

The lift shall stop at 16" - 19" measured from the deck to the top of the seat surface when in the loading position.

1009.2.8 Submerged Depth

The lift shall submerge the seat a minimum of 18" below the stationary water level



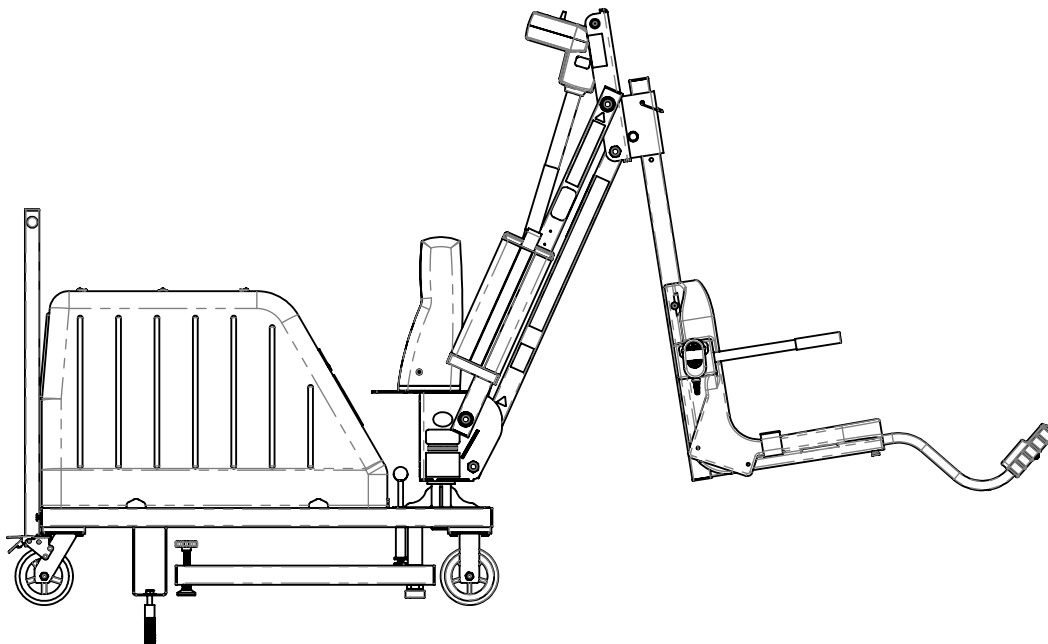
*Compliance with ADA is the responsibility of the pool owner. Visit www.ada.gov for complete guidelines. 4

PRODUCT OVERVIEW AND APPLICATIONS

THE ADA COMPLIANT, UL CERTIFIED, MIGHTY VOYAGER LIFT IS AN AFFORDABLE PORTABLE LIFT THAT PROVIDES ACCESS TO IN-GROUND AND SOME PARTIALLY RAISED POOLS AND SPAS. EQUIPED WITH AN ADJUSTABLE SEAT HEIGHT THAT ALLOWS THE THE LIFT TO CLEAR CURBS OR RAISED WALLS UP TO 10". THE LOW PROFILE DESIGN MAKES THIS LIFT EASILY BLEND IN AT ANY POOL, AND BEING PORTABLE, THE LIFT CAN EASILY BE ROLLED ON ITS LARGE 6-INCH RUBBER CASTERS TO BE STORED AWAY FROM THE POOL WITHOUT THE NEED FOR A SEPARATE TRANSPORT CART. THE LARGE 15-INCH SQUARE OPENING IN THE BALLAST COVER ALLOWS FOR EASY FILLING AND REMOVAL OF THE SAND COUNTER-WEIGHT THROUGH USE OF A VACUUM OR BUCKET IF NECESSARY. THIS LIFT COMES COMPLETE WITH AN ADA FIXING ANCHOR TO MEET U.S. FEDERAL ADA REGULATIONS.

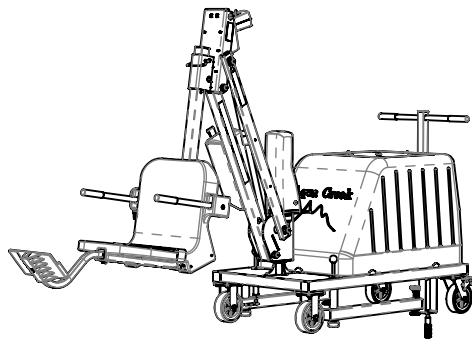
FEATURES

- ADA COMPLIANT & UL SAFETY CERTIFIED
- 325 LB. (147 KG) WEIGHT CAPACITY
- WHISPER-QUIET 255-DEGREE ROTATION
- STAINLESS STEEL CONSTRUCTION WITH POWDER COAT FINISH
- FIVE YEAR LIMITED WARRANTY
- MADE IN USA

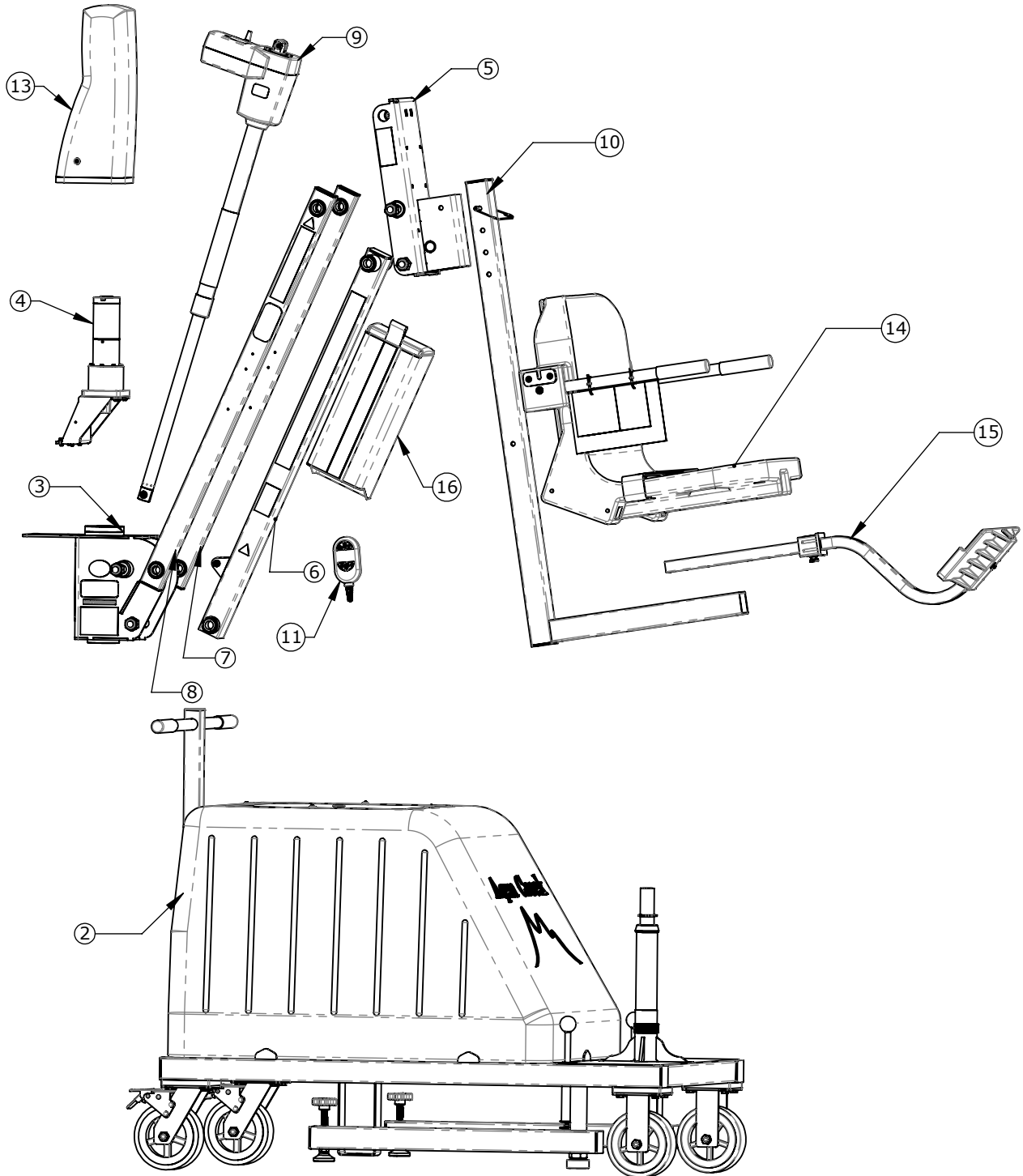


COMPONENT DETAILS

MIGHTY VOYAGER F-VGRPL: INV02592 - BLUE F-VGRPL-T: INV02593 - TAN F-VGRPL-G: INV02594 - GRAY F-VGRPL-W: INV03794 - WHITE F-VGRPL-C: INV02595 - CUSTOM COLORS								
ITEM	PART NO.	BLUE	TAN	GRAY	WHITE	REV.	DESCRIPTION	REORDER
1	SEE PAGE 8	1	1	1	1	-	STOCK BOX - MIGHTY VOYAGER	
2	INV03147	1	-	-	-	2	ASSEMBLY - VOYAGER CART	
2	INV03816	-	1	-	-	2	ASSEMBLY - VOYAGER CART (TAN)	
2	INV03817	-	-	1	-	2	ASSEMBLY - VOYAGER CART (GRAY)	
2	INV03818	-	-	-	1	2	ASSEMBLY - VOYAGER CART (GRANITE WHITE)	
3	INV02759	1	1	1	1	1	ASSEMBLY - MAIN FRAME	
4	INV02755	1	1	1	1	2	ASSEMBLY - MOTOR MOUNT	
5	INV02760	1	1	1	1	1	ASSEMBLY - TOP CASING	
6	INV02761	1	1	1	1	1	ASSEMBLY - VGR LIFTING ARM - 37.75"	
7	INV02763	1	1	1	1	1	ASSEMBLY - VGR CONTROL ARM	
8	INV02762	1	1	1	1	1	ASSEMBLY - VGR CONTROL ARM (B)	
9	INV03073	1	1	1	1	2	ACTUATOR KIT - 400MM - LINAK 90 DEG.	
10	INV02766	1	1	1	1	2	ASSEMBLY - SEAT CRADLE	
11	INV01845	1	1	1	1	-	REMOTE - 4 BUTTON LINAK	
12	INV02597	1	1	1	1	1	LABEL SHEET - MIGHTY VOYAGER	
13	INV03502	1	-	-	-	1	ASSEMBLY - MOTOR COVER - BLUE	
13	INV03504	-	1	-	-	1	ASSEMBLY - MOTOR COVER - TAN	
13	INV03503	-	-	1	1	1	ASSEMBLY - MOTOR COVER - GRAY	
14	INV01417	1	-	-	-	1	ASSEMBLY - SEAT 18.00" - BLUE	
14	INV02860	-	1	-	-	1	ASSEMBLY - SEAT 18.00" - TAN	
14	INV02859	-	-	1	-	1	ASSEMBLY - SEAT 18.00" - GRAY	
14	INV02861	-	-	-	1	1	ASSEMBLY - SEAT 18.00" - GRANITE WHITE	
15	INV01903	1	-	-	-	1	ACCESSORY - FOOTREST - BLUE	
15	INV01904	-	1	-	-	1	ACCESSORY - FOOTREST - TAN	
15	INV01905	-	-	1	-	1	ACCESSORY - FOOTREST - GRAY	
15	INV01906	-	-	-	1	1	ACCESSORY - FOOTREST - WHITE	
16	INV03471	1	-	-	-	1	ASSEMBLY - BATTERY & CONTROL BOX COVER - BLUE	
16	INV03472	-	1	-	-	1	ASSEMBLY - BATTERY & CONTROL BOX COVER - TAN	
16	INV03473	-	-	1	1	1	ASSEMBLY - BATTERY & CONTROL BOX COVER - GRAY	



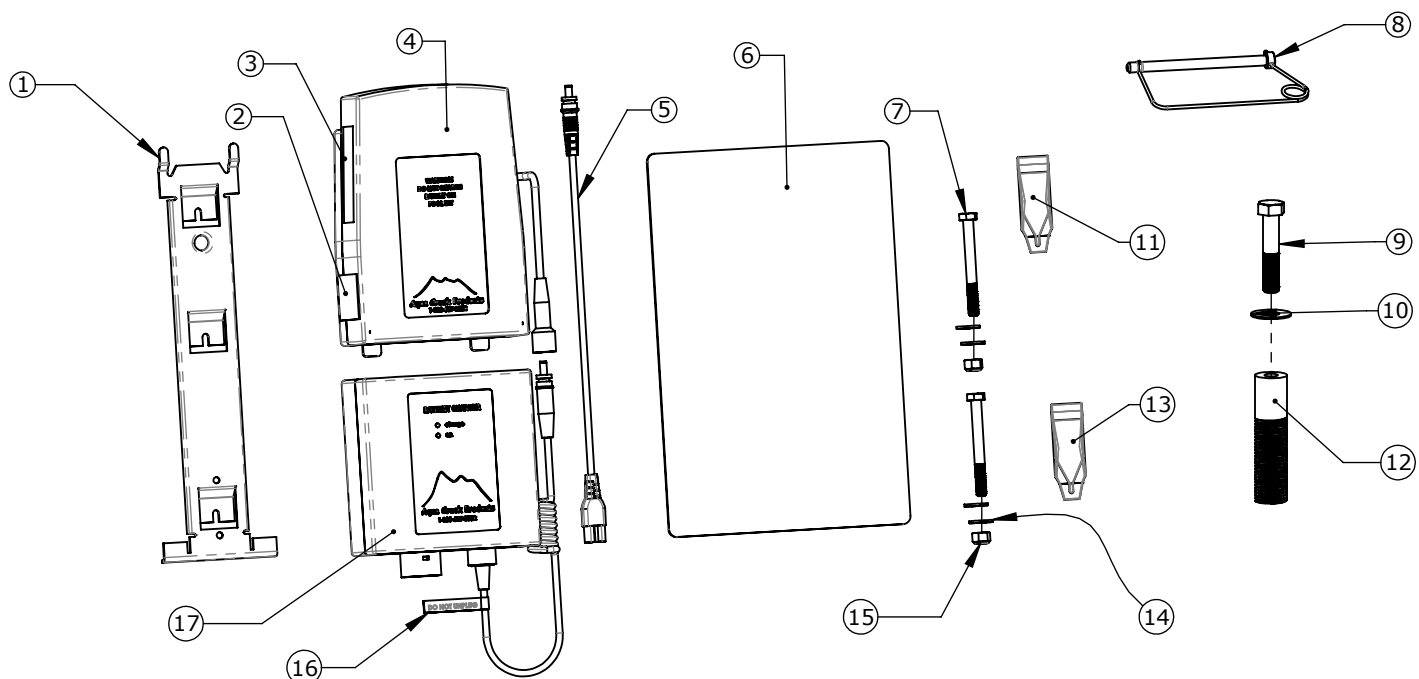
COMPONENT DETAILS



ITEMS 1 & 12 NOT SHOWN

COMPONENT DETAILS

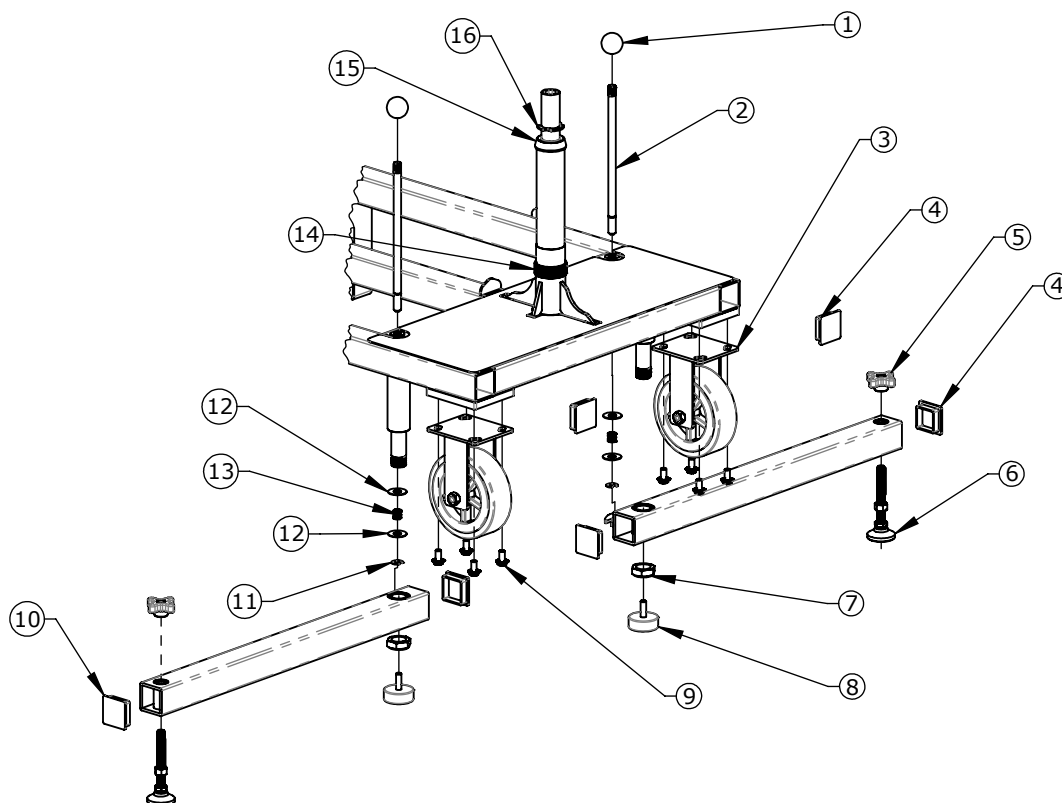
VOYAGER - STOCK BOX				
ITEM	PART NO.	QTY.	DESCRIPTION	REORDER
1	INV00611	1	BRACKET - WALL MOUT (VITO)	
2	INV01804	1	LABEL #146 - DAILY CHARGE	
3	INV00646	1	LABEL #133 - PROP 65 (BATTERY)	
4	INV01153	1	BATTERY - VITO 24V - 2PC CONTROLS	
5	INV00591	1	TEST CABLE - VITO 24V	
6	INV00578	1	SIGN - "ADA LIFT AVAILABLE" (AQUA CREEK)	
7	INV00418	2	BOLT - HEX 5/16"-18X3"	
8	INV01069	1	SP - 5/16"X4" SNAP PIN	
9	INV00391	1	BH - 1/2"-13X2 1/2" HEX HEAD BOLT	
10	INV01169	1	WF - 1/2" FLAT WASHER	
11	INV00303	1	ANTI-SEIZE - PACKET - 5 GRAMS	
12	INV01583	1	MACHINED - ANCHOR INSERT - 1.00"X4.00"	
13	INV00249	1	DIELECTRIC GREASE PACKET - 6 GRAMS	
14	INV01176	4	WF - 5/16" FLAT WASHER	
15	INV00742	2	NN - 5/16"-18 NYLOCK NUT	
16	INV01699	1	LABEL #145 - DO NOT UNPLUG	
17	INV01152	1	CHARGER - VITO 24V	



*HARDWARE ITEMS 7, 14, & 15 ARE OPTIONAL SEAT CRADLE ASSEMBLY OPTIONS. SEE PAGE 16 FOR DETAILS.

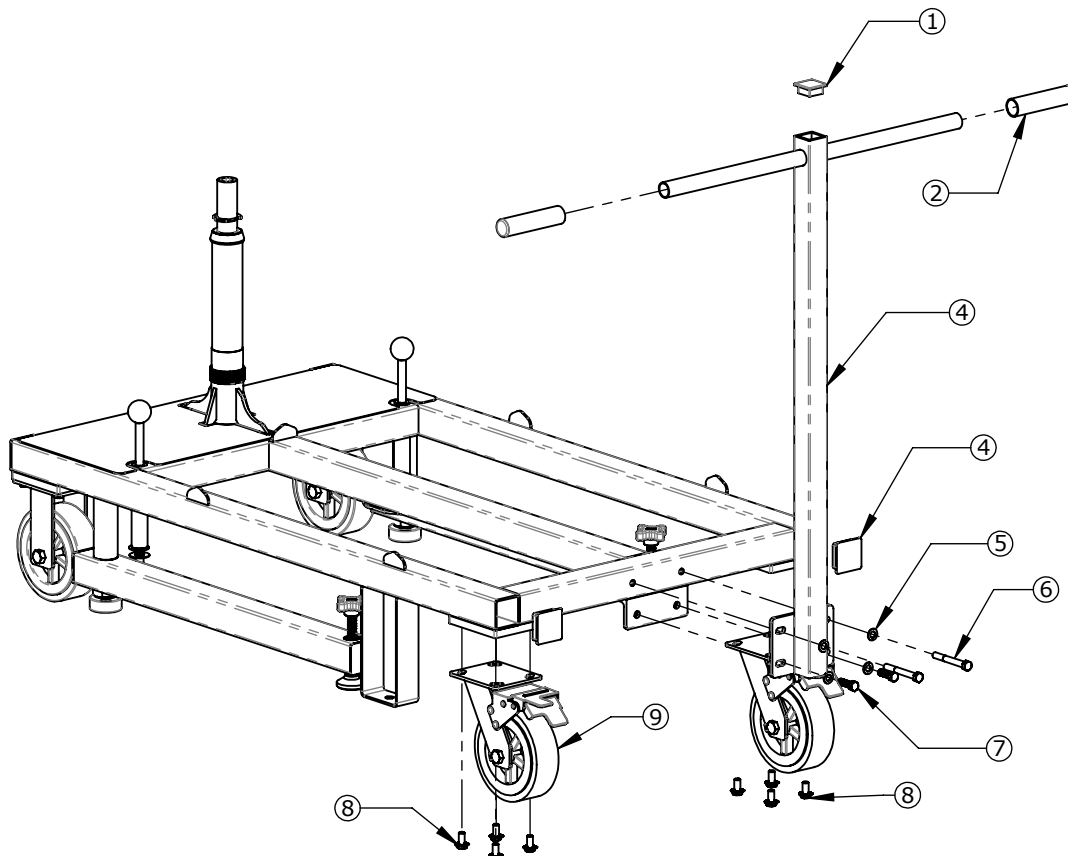
COMPONENT DETAILS

ASSEMBLY -VOYAGER CART (FRONT) - INV03147					
ITEM	PART NO.	QTY.	REV.	DESCRIPTION	REORDER
1	INV02563	2	-	BALL KNOB - 1 7/16" DIA. 1/2"-13 THREAD	
2	INV02584	2	1	MACHINED - OUTRIGGER LOCK	
3	INV02540	2	-	CASTER - FIXED 6"	
4	INV02559	4	-	END CAP - SQR. 2.00"X.188"	
5	INV00846	2	-	KNOB - 4 POINT 1/2"-13	
6	INV02560	2	-	LF - LEVELING FOOT - 1/2"-13X4" - 5 1/4" OVERALL	
7	INV00746	2	-	NNJ - 1"-8 NYLOCK JAM NUT	
8	INV02564	2	-	BUMPER - 3/8"-16 (PAIR)	
9	INV02558	16	-	BOLT - BHW 3/8"-16X3/4" SERRATED	
10	INV01082	4	-	END CAP - SQR. 2.00"X.120"	
11	INV02561	2	-	RETAINING RING - 1/2" OD EXTERNAL	
12	INV01169	4	-	WF - 1/2" FLAT WASHER	
13	INV02562	2	-	SPRING - 1/2" L X 0.60" OD X 0.51" ID X 0.22"	
14	INV00617	1	-	NEEDLE BEARING - K50MMX55MMX20MM	
15	INV00378	1	-	ROLLER BEARING - 1.25"I.D. X 2.33"O.D. X 5/8"	
16	INV01835	1	-	RETAINING RING - 1-1/4" OD EXTERNAL	

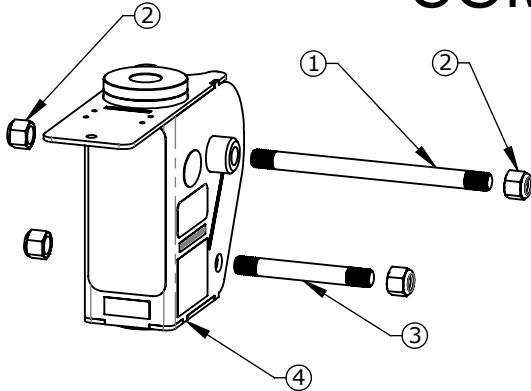


COMPONENT DETAILS

ASSEMBLY -VOYAGER CART (BACK) - INV03147					
ITEM	PART NO.	QTY.	REV.	DESCRIPTION	REORDER
1	INV01080	1	-	END CAP - SQR. 1.50"X.120"	
2	INV01031	2	-	HAND GRIP - RUBBER 1.00" DIA.	
3	INV02586	1	P1	MAKE - VERTICAL PUSH BAR	
4	INV02559	4	-	END CAP - SQR. 2.00"X.188"	
5	INV01174	8	-	WF - 3/8" FLAT WASHER	
6	INV00410	2	-	BH - 3/8"-16X3" HEX HEAD BOLT	
7	INV00405	2	-	BH - 3/8"-16X1 1/4" HEX HEAD BOLT	
8	INV02558	16	-	BOLT - BHW 3/8"-16x3/4" SERRATED	
9	INV02541	2	-	CASTER - SWIVEL 6"	

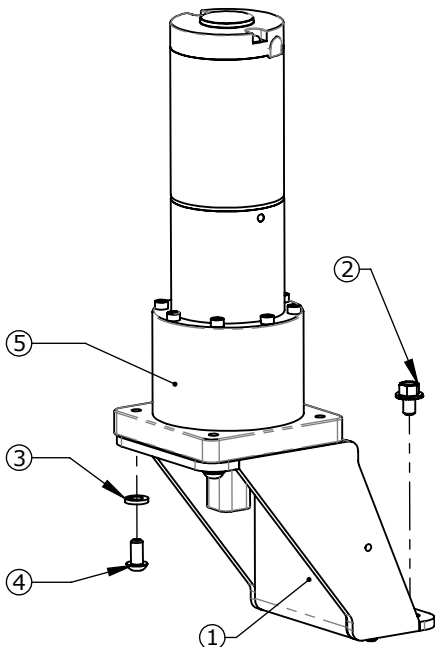
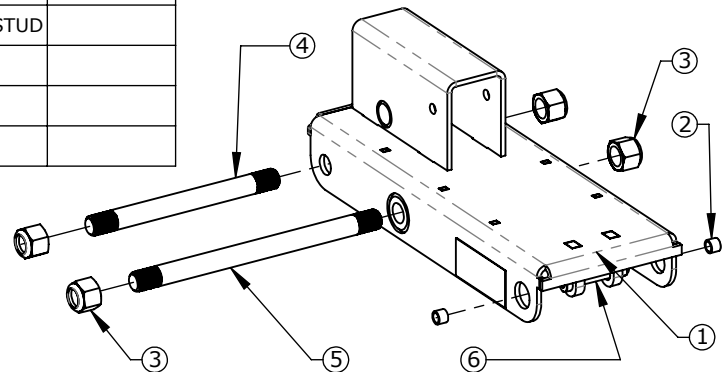


COMPONENT DETAILS



ASSEMBLY - MAIN FRAME - INV02759					
ITEM	PART NO.	QTY.	REV.	DESCRIPTION	REORDER
1	INV01823	1	1	MACHINED - TS - 3/4"-10X10.50" THREADED STUD	
2	INV00738	4	-	NN - 3/4"-10 NYLOCK NUT	
3	INV01821	1	1	MACHINED - TS - 3/4"-10X6.00" THREADED STUD	
4	INV02825	1	1	WELDMENT - MAIN FRAME	

ASSEMBLY - TOP CASING - INV2760					
ITEM	PART NO.	QTY.	REV.	DESCRIPTION	REORDER
1	INV02589	1	1	WELDMENT - TOP CASING	
2	INV00448	2	-	BRB - 1/2"X3/8"X3/8" BRONZE BUSHING	
3	INV00738	4	-	NN - 3/4"-10 NYLOCK NUT	
4	INV01822	1	1	MACHINED - TS - 3/4"-10X8.00" THREADED STUD	
5	INV01823	1	1	MACHINED - TS - 3/4"-10X10.50" THREADED STUD	
6	INV00464	1	-	BS - 3/8"X2"X5/16"-18 SHOULDER BOLT	
7	INV01176	1	-	WF - 5/16" FLAT WASHER	
8	INV00742	1	-	NN - 5/16"-18 NYLOCK NUT	

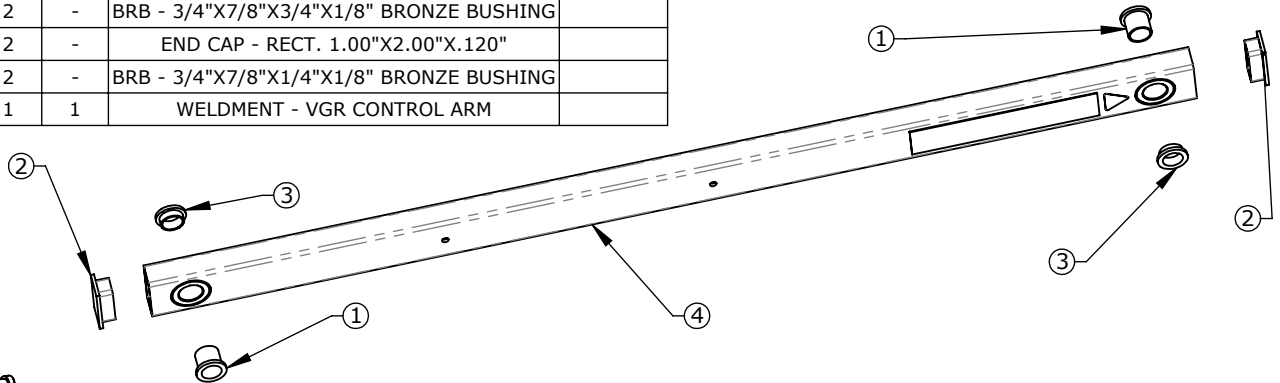


ASSEMBLY - MOTOR MOUNT - INV02755					
ITEM	PART NO.	QTY.	REV.	DESCRIPTION	REORDER
1	INV02083	1	1	WELDMENT - MOTOR MOUNT	
2	INV00428	4	-	BOLT - BHW 1/4"-20X3/8" SERRATED	
3	INV01182	4	-	WL - 1/4" LOCK WASHER	
4	INV00345	4	-	BB - 1/4"-20X1/2" BUTTON HEAD BOLT	
5	INV03462	1	1	SQUARE DRIVE ROTATIONAL MOTOR	
6	INV03686	1	-	1/4" BLACK SHRINK WRAP TUBING	

COMPONENT DETAILS

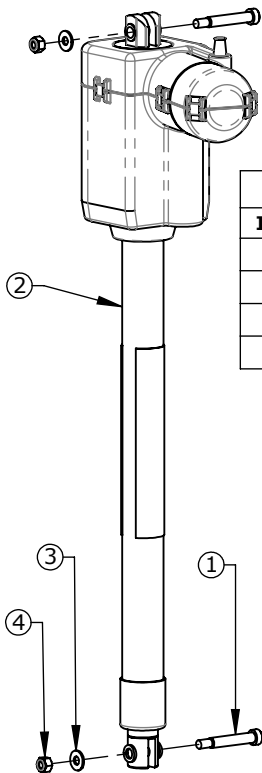
ASSEMBLY - CONTROL ARM INV02762 & INV02763

ITEM	PART NO.	QTY.	REV.	DESCRIPTION	REORDER
1	INV00446	2	-	BRB - 3/4"X7/8"X3/4"X1/8" BRONZE BUSHING	
2	INV00978	2	-	END CAP - RECT. 1.00"X2.00"X.120"	
3	INV00445	2	-	BRB - 3/4"X7/8"X1/4"X1/8" BRONZE BUSHING	
4	INV02581	1	1	WELDMENT - VGR CONTROL ARM	



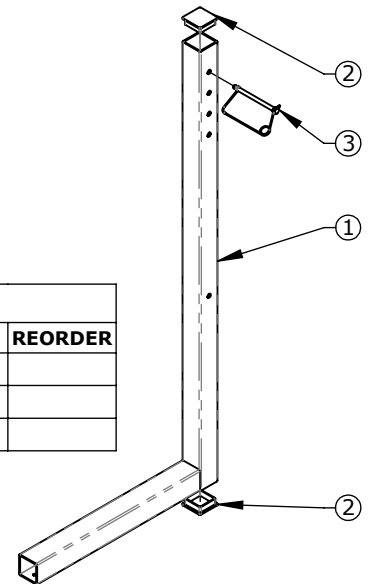
ACTUATOR - LINAK - 400mm - 90DEG - INV03073

ITEM	PART NO.	QTY.	REV.	DESCRIPTION	REORDER
1	INV00464	2	-	BS - 3/8"X2"X5/16"-18 SHOULDER BOLT	
2	INV01678	1	-	ACTUATOR - LINAK 400MM (PUSH) 10K	
3	INV01176	2	-	WF - 5/16" FLAT WASHER	
4	INV00742	2	-	NN - 5/16"-18 NYLOCK NUT	



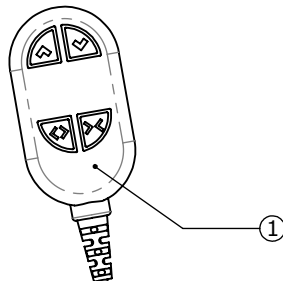
ASSEMBLY - SEAT CRADLE - INV02766

ITEM	PART NO.	QTY.	REV.	DESCRIPTION	REORDER
1	INV02591	1	1	WELDMENT - SEAT CRADLE	
2	INV01082	2	-	END CAP - SQR. 2.00"X.120"	
3	INV01069	1	-	SP - 5/16"X4" SNAP PIN	



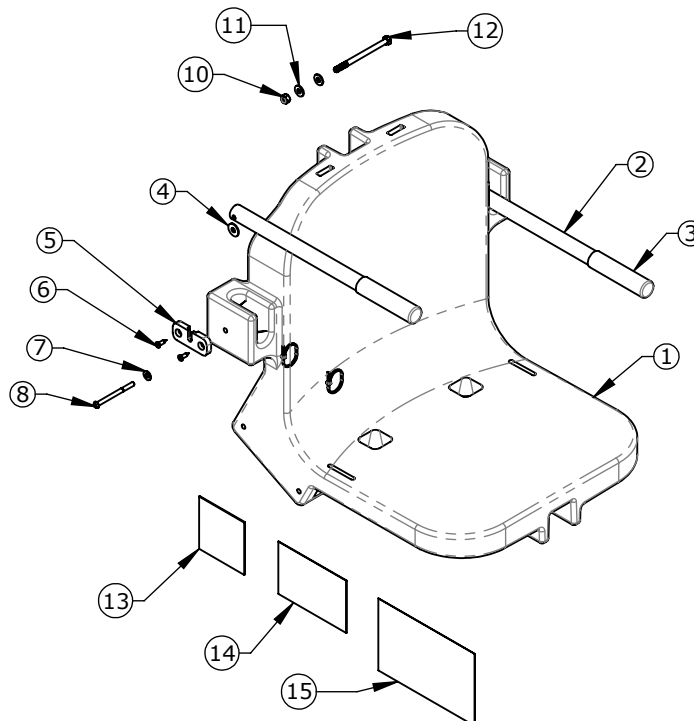
REMOTE - 4 BUTTON LINAK - INV01845

ITEM	PART NO.	QTY.	REV.	DESCRIPTION	REORDER
1	INV01845	1	-	REMOTE - 4 BUTTON LINAK	



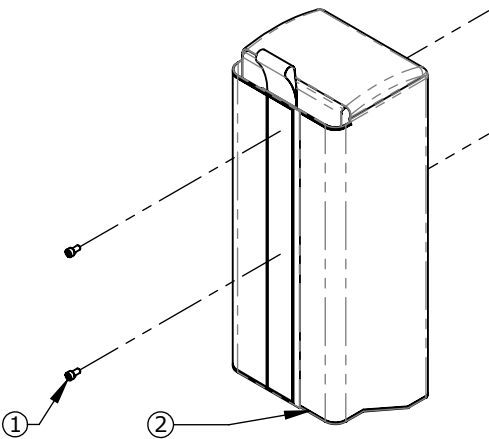
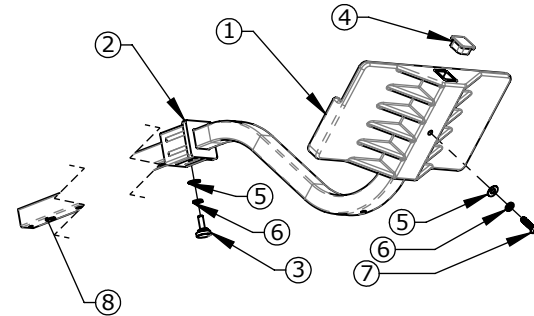
COMPONENT DETAILS

ASSEMBLY - SEAT 18.00" BLUE - INV01417 TAN - INV02860 GRAY - INV02859 WHITE - INV02861								
ITEM	PART NO.	BLUE	TAN	GRAY	WHITE	REV.	DESCRIPTION	REORDER
1	INV00819	1	-	-	-	1	ROTOMOLD - SEAT 18.00" - BLUE	
1	INV00826	-	1	-	-	1	ROTOMOLD - SEAT 18.00" - TAN	
1	INV00825	-	-	1	-	1	ROTOMOLD - SEAT 18.00" - GRAY	
1	INV00820	-	-	-	1	1	ROTOMOLD - SEAT 18.00" - GRANITE WHITE	
2	INV02227	2	2	2	2	1	MAKE - ARMREST TUBE	
3	INV01031	2	2	2	2	-	HAND GRIP - RUBBER 1.00" DIA.	
4	INV03136	2	2	2	2	-	WF - 5/16" NYLON	
5	INV00783	1	1	1	1	1	REMOTE HOLDER	
6	INV01057	2	2	2	2	-	SFH - #12X3/4" PHILLIPS HEAD SCREW	
7	INV01170	4	4	4	4	-	WF - 1/4" FLAT WASHER	
8	INV00349	2	2	2	2	-	BB - 1/4"-20X3 1/4" BUTTON HEAD BOLT	
9	INV00735	2	2	2	2	-	NN - 1/4"-20 NYLOCK NUT	
10	INV00742	1	1	1	1	-	NN - 5/16"-18 NYLOCK NUT	
11	INV01176	2	2	2	2	-	WF - 5/16" FLAT WASHER	
12	INV00421	1	1	1	1	-	BH - 5/16"-18X4 1/2" HEX HEAD BOLT	
13	INV03378	1	1	1	1	1	LABEL #203 - ATTENTION: ADJUSTABLE SEAT WARNING TAG	
14	INV00670	1	1	1	1	1	LABEL #87 - PROPER CARE	
15	INV00665	1	1	1	1	1	LABEL #75 - SAFETY CARD	



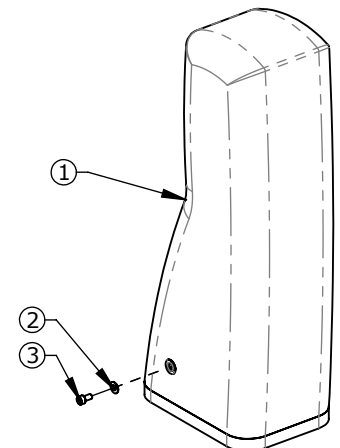
COMPONENT DETAILS

ASSEMBLY - FOOTREST BLUE - INV01903 GRAY - INV01905 TAN - INV01904 WHITE - INV01906								
ITEM	PART NO.	BLUE	GRAY	TAN	WHITE	REV.	DESCRIPTION	REORDER
1	INV01894	1	-	-	-	1	PART - LEG/FOOTREST - BLUE	
1	INV01897	-	1	-	-	1	PART - LEG/FOOTREST - GRAY	
1	INV01895	-	-	1	-	1	PART - LEG/FOOTREST - TAN	
1	INV01896	-	-	-	1	1	PART - LEG/FOOTREST - WHITE	
2	INV01578	1	1	1	1	1	PART - LEG/FOOTREST INSERT	
3	INV02364	1	1	1	1	-	KNOB - 3/4" KNURLD - 1/4-20 X 3/4"	
4	INV01078	1	1	1	1	-	END CAP - SQR. 1.00"X.120"	
5	INV01170	2	2	2	2	-	WF - 1/4" FLAT WASHER	
6	INV01182	2	2	2	2	-	WL - 1/4" LOCK WASHER	
7	INV00341	1	1	1	1	-	BOLT - BHSCS 1/4"-20X1"	
8	INV02465	1	1	1	1	2	BEND - FOOTREST W/HOLES	



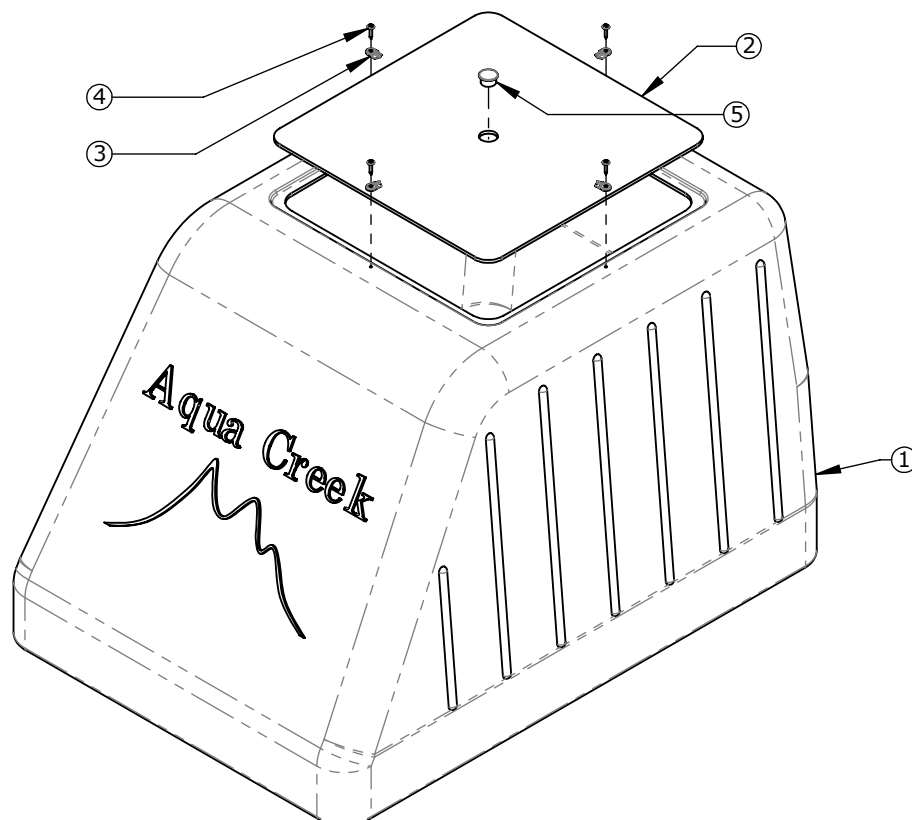
ASSEMBLY - BATTERY AND CONTROL BOX COVER BLUE - INV 03471 GRAY - INV03473 TAN - INV03472							
ITEM	PART NO.	Blue Linak	Gray Linak	Tan Linak	REV.	DESCRIPTION	REORDER
1	INV00471	2	2	2	-	BSH - #10-24X3/8" SOCKET HEAD BOLT	
2	INV00588	1	-	-	1	COVER - BATTERY & CONTROL BOX - LINAK & VITO - BLUE	
3	INV00589	-	1	-	1	COVER - BATTERY & CONTROL BOX - LINAK & VITO - GRAY	
4	INV00590	-	-	1	1	COVER - BATTERY & CONTROL BOX - LINAK & VITO - TAN	

ASSEMBLY - MOTOR COVER BLUE - INV03502 GRAY - INV03503 TAN - INV03504							
ITEM	PART NO.	BLUE	GRAY	TAN	REV.	DESCRIPTION	REORDER
1	INV01747	1	-	-	1	COVER - MOTOR - BLUE	
1	INV01839	-	1	-	1	COVER - MOTOR - GRAY	
1	INV01838	-	-	1	1	COVER - MOTOR - TAN	
2	INV01172	2	2	2	-	WF - #10 FLAT WASHER	
3	INV00471	2	2	2	-	BSH - #10-24X3/8" SOCKET HEAD BOLT	



COMPONENT DETAILS

ASSEMBLY - VOYAGER TANK BLUE - INV03116 GRAY - INV03114 TAN - INV03115 WHITE - INV03308								
ITEM	PART NO.	BLUE	GRAY	TAN	WHITE	REV.	DESCRIPTION	REORDER
1	INV02556	1	-	-	-	1	ROTOMOLD - VOYAGER TANK - BLUE	
1	INV02604	-	1	-	-	1	ROTOMOLD - VOYAGER TANK - GRAY	
1	INV02603	-	-	1	-	1	ROTOMOLD - VOYAGER TANK - TAN	
1	INV03307	-	-	-	1	1	ROTOMOLD - VOYAGER TANK - GRANITE WHITE	
2	INV02486	1	-	-	-	1	ROTOMOLD - VOYAGER CAP - BLUE	
2	INV02606	-	1	-	-	1	ROTOMOLD - VOYAGER CAP - GRAY	
2	INV02605	-	-	1	-	1	ROTOMOLD - VOYAGER CAP - TAN	
2	INV03793	-	-	-	1	1	ROTOMOLD - VOYAGER CAP - GRANITE WHITE	
3	INV02988	4	4	4	4	-	TURN BUTTON - 5/16"	
4	INV01071	4	4	4	4	-	SPH - #10X3/4" PHILLIPS HEAD SCREW	
5	INV03655	1	1	1	1	1	END CAP - RND. 1.00" DIA.	



PRODUCT ASSEMBLY

NOTE:

ASSEMBLY WILL REQUIRE EIGHTEEN (18) 50LB. BAGS (900LBS.) OF SAND, NOT SUPPLIED WITH THE LIFT.

DO NOT USE LIFT WITHOUT SAND AS A COUNTERWEIGHT! DO NOT USE ANY MATERIAL OTHER THAN SAND AS A COUNTERWEIGHT!

1. REMOVE THE LIFT FROM THE PACKAGING. SLIDE THE CHAIR AND CHAIR CRADLE THROUGH THE BOTTOM OF THE HEAD CASING AND ATTACH USING THE SUPPLIED SNAP PIN. THE ADDITIONAL BOLTS INCLUDED IN THE STOCK BOX MAY BE USED INSTEAD OF THE SNAP PINS FOR A MORE PERMANENT SIT-UP. IT IS RECOMMENDED TO USE THE SNAP PIN FOR EASIER REMOVAL IF STORED FREQUENTLY. NEXT, SLIDE THE FOOTREST ASSEMBLY INTO THE CHAIR TUBE AND ATTACH USING THE SUPPLIED KNOB SCREW (BE SURE THE PLASTIC INSERT IS FULLY INSTALLED IN THE CHAIR TUBE AND THAT THE HOLE IN THE INSERT AND IN THE BOTTOM OF THE CHAIR TUBE ARE ALIGNED) SEE PAGE 18 FOR DETAILED FOOTREST INSTRUCTIONS.
2. REMOVE THE BALLAST LID AND FILL THE BALLAST TANK WITH 900 POUNDS OF ALL-PURPOSE SAND (THE SAND SHOULD COME TO THE BOTTOM OF THE LIP WHERE THE BALLAST TANK LID SITS, SEE PICTURE BELOW). ONCE ALL THE SAND HAS BEEN POURED IN, SECURE THE LID BACK IN PLACE ON TOP OF THE TANK.

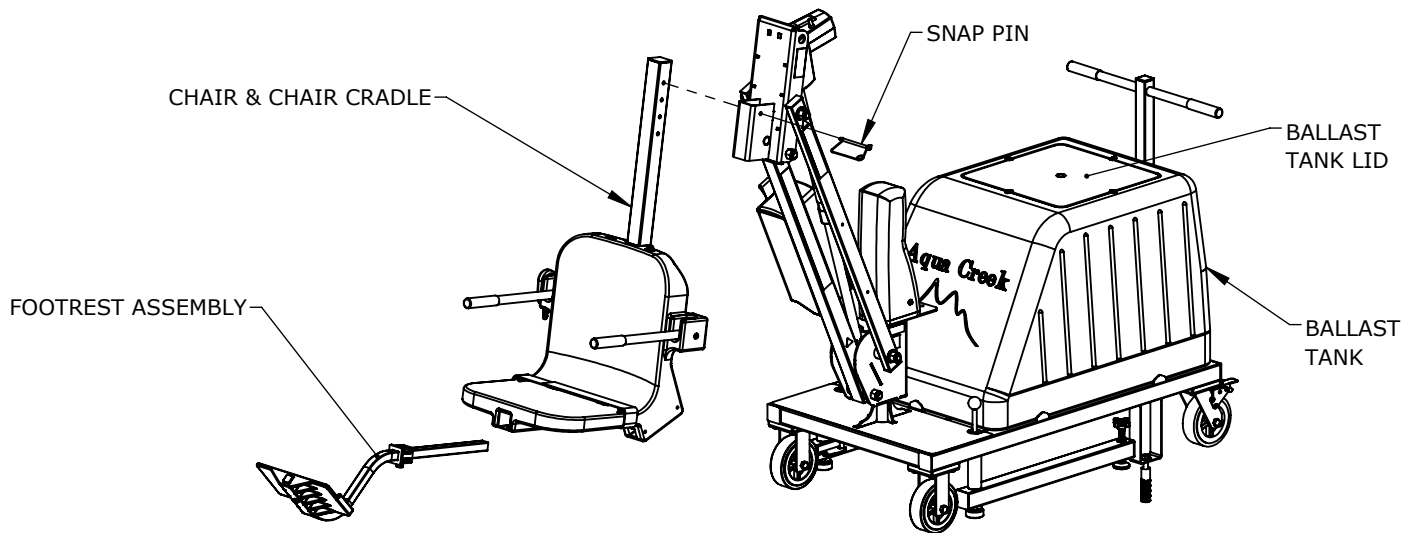


FIGURE 2



ENSURE TANK IS FULL OF SAND TO BOTTOM OF LIP

PRODUCT ASSEMBLY

3. ATTACH THE SEAT BELT THROUGH THE SLOTS IN THE SEAT BASE AND PINCH THE HOOK & LOOP MATERIAL TOGETHER. SEE DIAGRAM TO RIGHT.
4. PLACE THE BATTERY ON THE CHARGER AND BRING TO A FULL CHARGE.
5. REMOVE THE FULLY CHARGED BATTERY FROM THE CHARGER AND INSTALL IT ON TOP OF THE CONTROL BOX. THE BATTERY WILL LINE UP WITH THE CONTROL BOX, AND WILL 'CLICK' WHEN IT PROPERLY LOCKS IN PLACE. APPLY DIELECTRIC GREASE TO THE PLUG TERMINALS, INCLUDING THE O-RING SEAL, AND THEN CONNECT THE BATTERY CABLE TO THE CONTROL BOX CABLE. NOTE: **TO EXTEND BATTERY LIFE, ALWAYS STORE BATTERY ON THE CHARGER WHEN THE LIFT IS NOT IN SERVICE.** SEE PAGE 25 FOR DETAILED INSTRUCTIONS
6. ROLL THE LIFT TO THE AREA NEAR THE POOL WHERE IT IS TO BE USED AND THEN LOCK THE REAR CASTERS.
7. DEPLOY BOTH OUTRIGGERS AND TWIST THE PRESSURE FOOT ON EITHER SIDE UNTIL THEY COME INTO CONTACT WITH THE GROUND. **DO NOT OPERATE LIFT UNLESS OUTRIGGERS ARE DEPLOYED!** SEE FIGURE 3 BELOW.
8. OPERATE THE LIFT WITHOUT A LOAD TO VERIFY THAT THE LIFT WILL OPERATE PROPERLY IN THE SELECTED LOCATION. CHECK THAT THERE IS ENOUGH CLEARANCE BETWEEN THE LIFT SEAT AND THE POOL WALL AS THE CHAIR EXTENDS INTO THE WATER.
9. WHEN LIFT IS CONFIRMED TO BE IN A PROPER LOCATION, A FACILITY MAY CHOOSE TO INSTALL A FIXING KIT. A FIXING KIT WILL AFFIX THE LIFT TO THE DECK AND IS REQUIRED FOR MOST COMMERCIAL APPLICATIONS TO BE ADA COMPLIANT. SEE FOLLOWING PAGE FOR DETAILED INSTRUCTIONS.

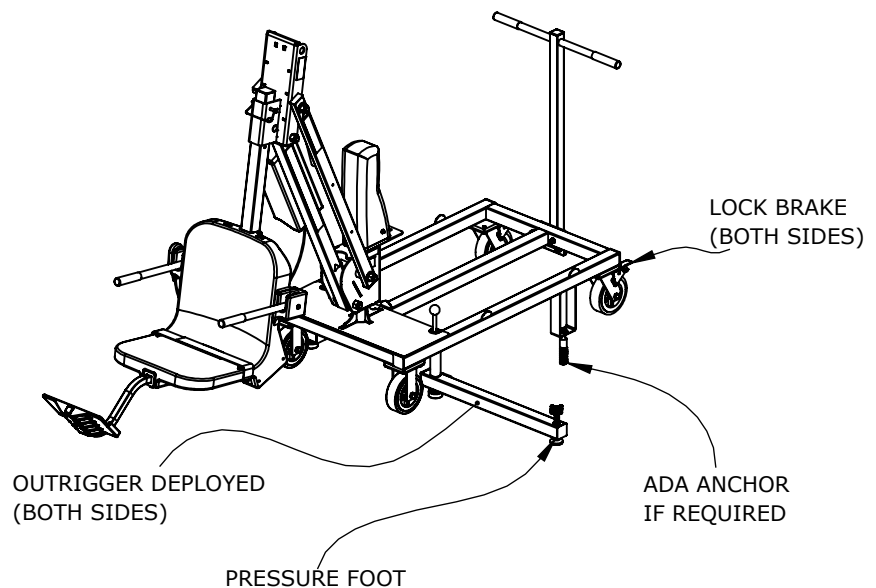
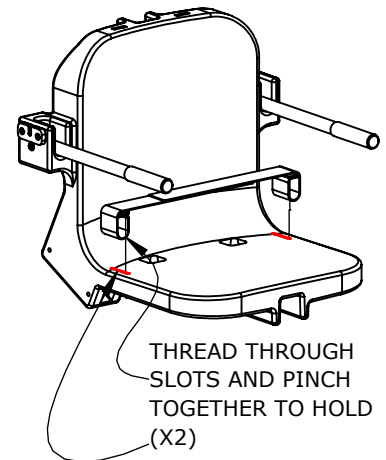


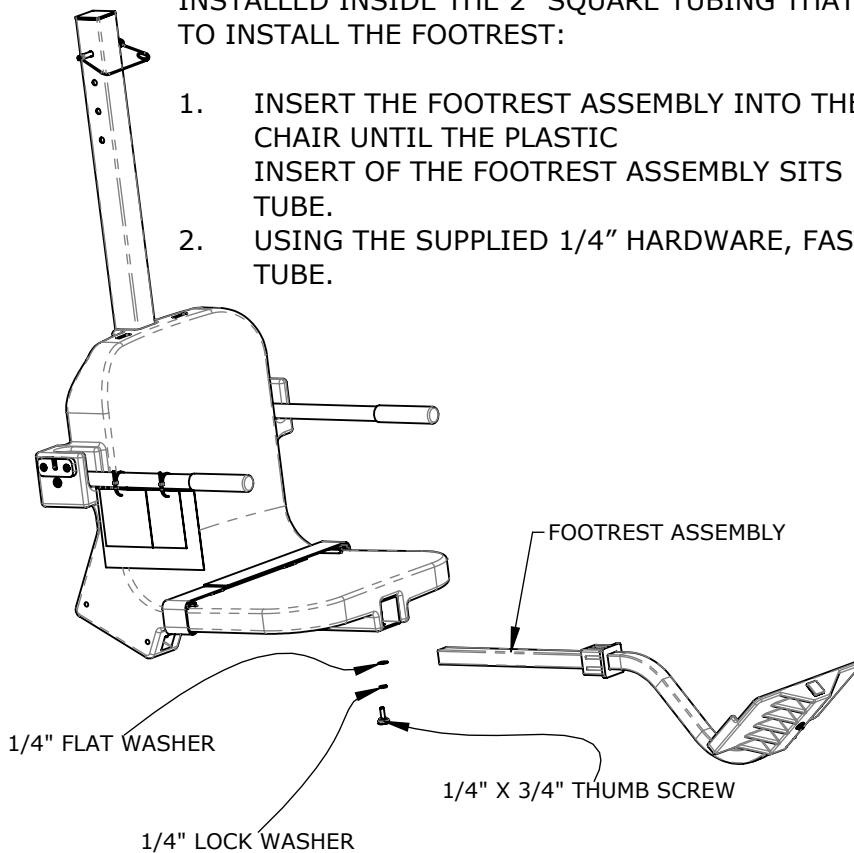
FIGURE 3

PRODUCT ASSEMBLY

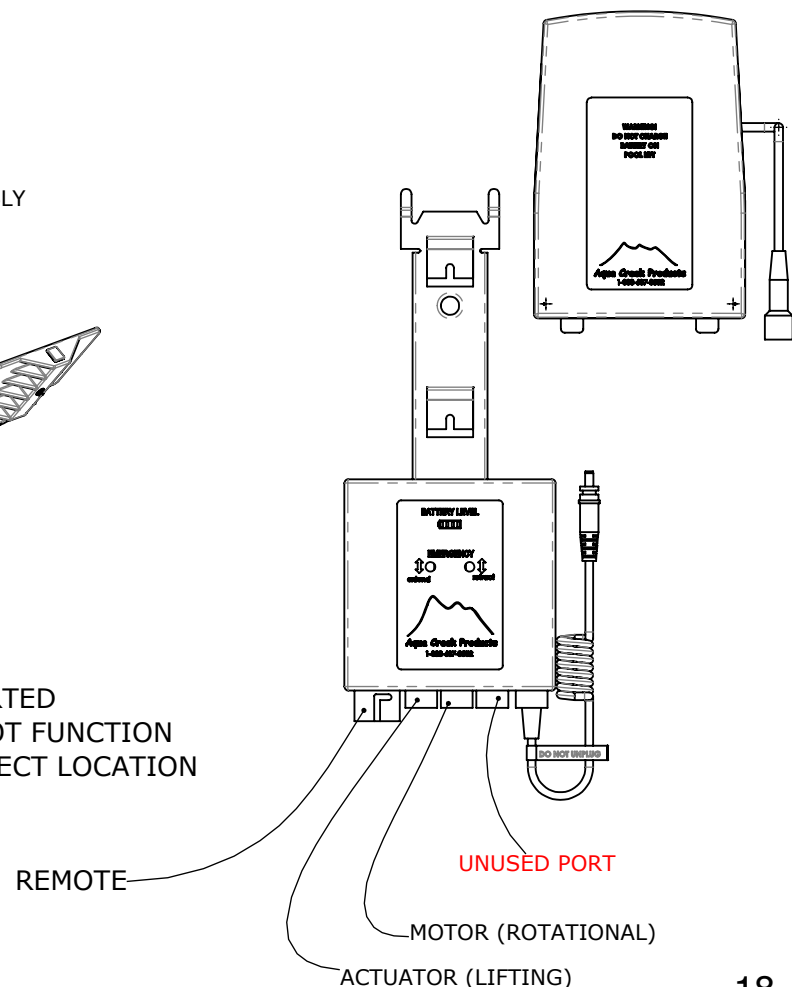
FOOTREST INSTALLATION INSTRUCTIONS

THE AQUA CREEK FOOTREST ASSEMBLY IS DESIGNED TO FIT UNDER THE CHAIR AND IS INSTALLED INSIDE THE 2" SQUARE TUBING THAT SUPPORTS THE CHAIR FROM UNDERNEATH. TO INSTALL THE FOOTREST:

1. INSERT THE FOOTREST ASSEMBLY INTO THE 2" X 2" SQUARE TUBE THAT SUPPORTS THE CHAIR UNTIL THE PLASTIC INSERT OF THE FOOTREST ASSEMBLY SITS FLUSH AGAINST THE END OF THE 2" X 2" TUBE.
2. USING THE SUPPLIED 1/4" HARDWARE, FASTEN THE LARGEST ASSEMBLY TO THE 2" X 2" TUBE.



3. ENSURE ALL FOUR CABLES ARE INSERTED INTO THE CORRECT PORT. THE LIFT WILL NOT FUNCTION PROPERLY IF CABLES ARE NOT IN THE CORRECT LOCATION



PRODUCT ASSEMBLY

MIGHTY VOYAGER FIXING KIT INSTALLATION INSTRUCTIONS

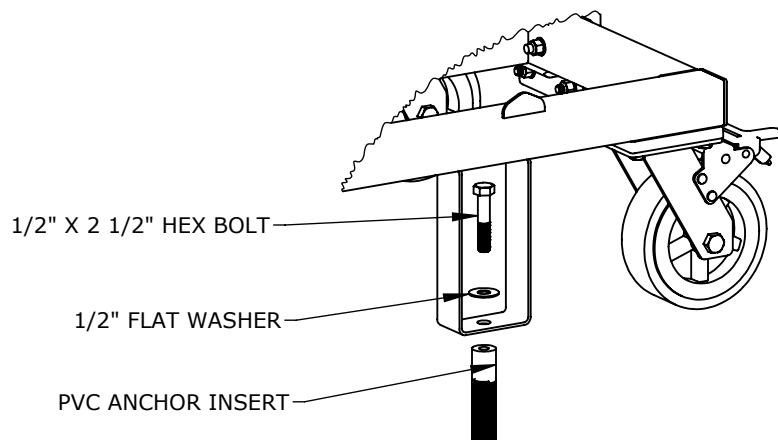
TOOLS REQUIRED:

- CORE-DRILLING RIG
- 1-1/4" DIAMETER CORE-DRILL
- 3/4" WRENCH OR SOCKET
- 2-PART CONSTRUCTION EPOXY OR EQUIVALENT
- TAPE MEASURE
- MARKING PEN

NOTE: FIXING KIT INSTALLATION IS ONLY REQUIRED FOR ADA APPLICATIONS.

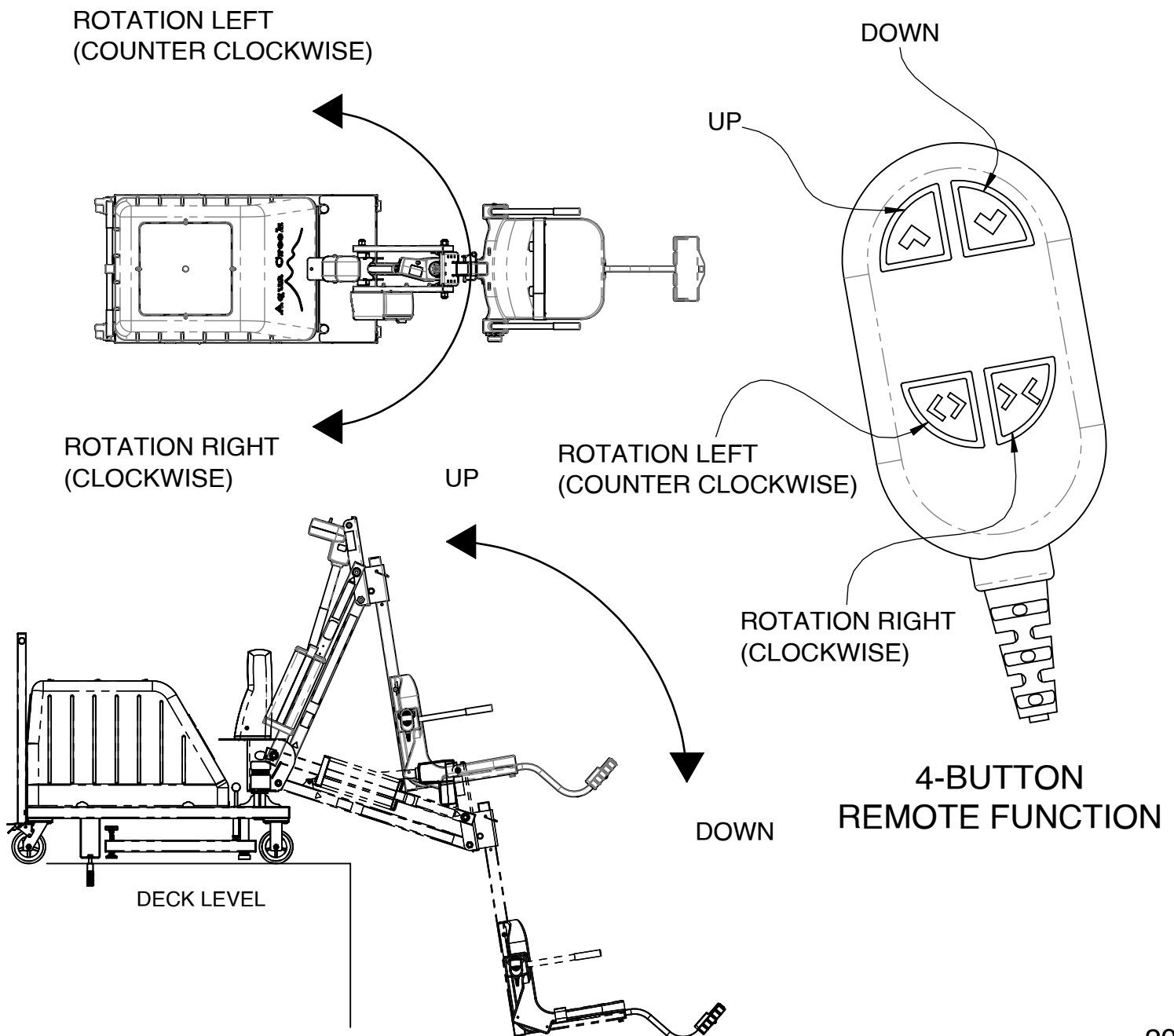
MIGHTY VOYAGER FIXING KIT INSTALLATION INSTRUCTIONS

1. DETERMINE THE LOCATION OF THE ANCHOR INSERT, ALLOWING FOR THE ADA COMPLIANT CLEAR DECK SPACE. (SEE FIGURE 1, PAGE 4)
2. MARK THE LOCATION FOR THE 1-1/4" X 4" DEEP ANCHOR HOLE. USING A CORE-DRILL, DRILL A 1-1/4" DIAMETER, 4" DEEP HOLE AT THE MARKED LOCATION.
3. DRY-FIT THE ANCHOR INSERT TO MAKE SURE IT FITS FLUSH WITH THE DECK SURFACE.
4. FILL THE HOLE 1/2 FULL WITH EPOXY (OR EQUIVALENT). INSTALL THE ANCHOR INSERT FLUSH WITH THE DECK SURFACE AND CLEAN OFF ANY EXCESS. ALLOW 24 HOURS FOR THE EPOXY TO CURE.
5. ROLL THE PORTABLE CART OVER THE INSTALLED ANCHOR. ALIGN THE ANCHOR WITH THE U-BRACKET.
6. DROP THE FIXING BOLT INTO THE U-BRACKET AND, BY HAND, START TO THREAD INTO THE ANCHOR INSERT. IF NEEDED, ADJUST THE ALIGNMENT OF THE LIFT.
7. WHEN PROPERLY ALIGNED, COMPLETE THREADING WITH A 3/4" WRENCH OR SOCKET. TIGHTEN UNTIL THE BOLT JUST TOUCHES THE FLAT WASHER. **DO NOT OVERTIGHTEN.**



OPERATION INSTRUCTIONS

CONGRATULATIONS, YOUR LIFT IS NOW READY FOR USE!



LIFT INSPECTION INFORMATION

Test Date:	
Pool Lift Model:	
Serial Number:	
Inspected By:	

Inspection Notes:

Please read and fill out all information carefully

Improper use and/or maintenance of pool lift can lead to actuator and/or other mechanical failures and possible personal injury. Please read and follow the product operators' manual and the instructions below.

NOTE: Completely cycle the lift without a load before each use to verify the lift is functioning properly.

- Product service life depends on the load characteristics, type and frequency of use, and the environment in which the product is being used. For example, persons not calmly sitting but falling down with their full body weight in the chair, or using the pool lift's chair as a diving platform can casue premature actuator failure and/or possible personal injury.
- Based on historical product service life analysis, Aqua Creek recommends replacing the actuator(s) and other electronic components after 5 years of service. Check component serial numbers and purchase records to verify the age of your components.
- A functional weight lifting force of a maximum of 100lbs. Must be periodically verified by applying a non-live load (without a person) through the entire operating cycle of the lift. This process is performed in order to verify the smooth operation. Make note of any unusual noises or sudden movements coming from the actuator(s) or other components. Note: In some lifts, a sudden quick movement at the beginning of the cycle is normal but should smooth out over the course of operation.
- Creating a side load on the actuator by pushing and/or pulling on the actuator, especially under load conditions, can casue damage to the actuator and or personal injury.
- Electronic components are designed to be plug-and-play type replacements. There is no need to access the internal mechanisms in these components. The actuator, battery, and all electronic components may only be disassembled by authorized factory-trained personnel. Disassembly of electronic components by improperly trained and unauthorized persons will void the warranty on those components.
- The operator of the pool lift should never allow the pool lift to hit any stationary object either vertically or horizontally while operating a pool lift, i.e. walls, ceiling, pool/spa bench, etc.
- For quick and accurate troubleshooting and inspections, we recommend having a voltmeter on hand as well as adequate test and replacement components for the unit.
- Remove the pool lift from service immediately if any unusual noise is heard coming from the actuator such as grinding, popping or sudden inconsistent movements.
- Immediately remove from service any lift that does not have 100% compliance with the inspection until the appropriate corrections have been made by a qualified person.

ANNUAL VISUAL INSPECTION

Corrosion is common with anything in a swimming pool environment; even stainless steel. Proper and regular maintenance and cleaning will prevent most instances of corrosion. Replace any components that have corrosion caused pitting, cracking, thinning of the base metal, or other instances of corrosion that can't be eliminated and/or minimized through thorough cleaning. Refer to product manual for additional maintenance instructions. Make comments and/or recommendations in the notes area below each section.

INSPECTION ITEM	PASS	FAIL	N/A
1. Anchor bolts, concrete around anchors, etc... are in good condition. No cracks in concrete, missing hardware, and anchors are installed correctly.			
2. The fixing anchor is installed correctly and is in good condition.			
3. Powder coated components are clean, corrosion free, and in good overall condition. Clean and repair any missing powder coat finish. Apply a coat of wax on the cleaned and repaired finish.			
4. Welded joints show no signs of cracks or fatigue. Replace any non-compliant components.			
5. Hardware is present, secure, and not corroded (bolts, nuts, bushings, etc...).			
6. All wiring routing clips are present and in good condition.			
7. All product warning labels are present and legible.			
8. Plastic seat, foot rest, and other plastic components are present and in good condition.			
9. Armrest hand grips are present, in good condition, and are well secured to the arms.			
10. Electronic and lift covers are present and in good condition (Lift covers are highly recommended for outdoor installations).			
11. Inspect rotation gears for any damage or missing teeth. Inspect rotation motor gear and alignment to ensure proper rotation of the lift.			
12. Inspect lift slings, seat belts, and other similar stitched and webbed or weaved materials for damage, fatigue, and/or deterioration. Replace at first sign of any fatigue or damage.			

ANNUAL PHYSICAL POOL LIFT TEST

A physical test of the lift's function is required when doing an annual inspection. The lift should always run through a completed cycle without a load prior to each use. Make comments and/or recommendations in the notes area below.

INSPECTION ITEM	PASS	FAIL	N/A
1. With all connections secured, operate the lift through a complete cycle with and without weight to confirm the lift is functioning properly. Note any strange noises or unusual behavior.			
2. Verify the lift was installed correctly. Is the lift free to travel in and out of the pool without hitting anything such as walls, rails, benches, etc.?			
3. Rotate lift at least 90 degrees over the water and back again if applicable.			

NOTES:

ANNUAL ELECTRONICS INSPECTION

Most electronic issues are due to poor electrical connections and/or a defective battery. Always remove the battery and place on the charger when the lift is not in use. NOTE: Even if your lift is equipped with a solar charger, it is a good idea to place the battery on the wall charger periodically or during extended periods of non-use or storage. Before testing the battery, charge overnight. A voltage meter is required for this section and a known GOOD handset controller is helpful. An Aqua Creek electronics test light is also highly recommended (order item F-01TL). Make comments and/or recommendations in the notes area below each section.

INSPECTION ITEM	PASS	FAIL	N/A
1. Battery contact points are free of damage and/or corrosion. Dielectric grease is present on all contact points to prevent corrosion. ALWAYS STORE BATTERY ON THE CHARGER WHEN LIFT IS NOT IN USE!			
2. Battery level indicator (if equipped) on control box is functioning properly when battery is installed on lift.			
3. Using a voltmeter, check the voltage on the battery. A good battery will read between 24v and 28v DC. Note: Vito batteries will require a test cord. (F-VTC002)			
4. Using the test light, confirm continuity through the control box by plugging the light into the control box in place of the actuator and press the buttons on the controller and the control box itself (if applicable). If the light does not light up with the handset, replace handset with a known good one and try to see if it lights up.			
5. Once the battery is fully charged up to 24 to 28 volts, cycle the lift (up, down, rotate) counting the cycles. If the battery is in good condition, the lift should easily complete at least 15 cycles without a load.			

MAINTENANCE INSTRUCTIONS

PROCEDURE	BEFORE EACH USE	DAILY	WEEKLY	MONTHLY
Check battery level indicator on control box.	✓			
Run the lift through a complete test cycle (fully extend actuator) to verify it is functioning properly.	✓			
Wash lift with fresh water and dry with clean, soft, non-abrasive cloth.		✓		
Recharge battery.		✓		
Visually inspect lift for damage, corrosion, and loose or missing hardware.		✓		
Check all contact points for damage and/or corrosion.			✓	
Clean all contact points, and apply dielectric grease as needed.			✓	
Thoroughly clean lift frame and apply a liberal coat of car wax to maintain the lift's finish.				✓
Check all Warning and Cautionary labels to make sure they are not faded or worn. Replace as needed.				✓

PROPER CARE NOTES:

- Use only fresh water to wash your lift. Do not wash with pool water.
- Use only clean, soft, non-abrasive cloths on your lift.
- Do not store lift or electronics in pump room or near chemicals.
- Do not allow children to play on or around this lift.
- When cleaning the lift, do not spray water directly on control box or battery.
- The lift may need to be bonded according to local code requirements.
- If the lift is not used for extended periods, remove the battery from the lift and store it on the wall charger to maintain the batteries charge. The charger should be plugged in and in a climate controlled area.

STAIN REMOVAL NOTES:

To remove stubborn stains from finish, spray affected area with mild dish soap, rub briskly with a 3M Scotch Brite™ pad. Use white epoxy paint to touch up the finish. Apply wax to protect when dry.

BASIC TROUBLESHOOTING - LINAK

1. Make note of the complaint, such as lift is not operating at all, lift won't return to deck, etc...
2. Make note of any noises the lift may be making, such as grinding, clicking, buzzing, beeping. Try to identify where the noises are coming from, i.e. the actuator, battery control box, etc...
3. If a 'beeping' noise is coming from the battery, chances are the battery is dead or not charged enough to operate the lift. It is designed to have an audible alarm when it reaches below a certain charge level. Check the battery voltage (Should read >24 volts DC) and either charge the battery or replace it with a new one.
 - A. Lay the battery on a flat, dry surface.
 - B. Make sure your voltmeter is on and set to DC mode.
 - C. Put one probe on the left metal prong and one of the right metal prong.
 - D. The voltmeter should read 24 Volts or higher for a good battery. If it reads negative it just means the probes are on backwards.
 - E. Sometimes it will test good on voltage but the amperage is insufficient.
 - F. The battery can be taken to a battery store to have an 8 amp load test done to check for proper amperage.
4. If the battery just came off the charger and is fully charged, check to make sure the charger is plugged in and charging properly. This can be done with the voltmeter.
 - A. Verify the charger is plugged into a working wall outlet.
 - B. Place one probe from your voltmeter on the left metal prong on the charger and the other probe on the right metal prong of the charger. Voltage should be reading at least 27 volts DC. If it reads negative it just means the prongs were placed backwards.
5. Verify the cords are properly seated in the control box ports and are not damaged or corroded. We suggest unplugging and then plug back in to ensure they are seated properly. Clean any corrosion off of the battery tabs and cord plugs if there is any.
 - A. Remove any protective black or gray pieces and pull up gently on the metal tabs.

ONCE THESE STEPS ARE COMPLETE CALL AQUA CREEK PRODUCTS AND TALK TO TECHNICAL SUPPORT FOR FURTHER ASSISTANCE OR GO ONLINE AND WATCH OUR TROUBLESHOOTING VIDEOS:

(888)687-3552

[HTTPS://AQUACREEKPRODUCTS.COM/HELP-CENTER/TROUBLESHOOTING/](https://aquacreekproducts.com/help-center/troubleshooting/)



LIMITED FIVE (5) YEAR WARRANTY

Aqua Creek Products, LLC (a.k.a. Aqua Creek) warrants to the original end user purchaser that products manufactured by Aqua Creek, when properly installed in accordance with assembly and installation instructions, and properly used and maintained, shall be free from defects in material and workmanship for a period of *five (5) years from the date of original purchase*, provided that Aqua Creek receives prompt notice in writing of any defect or failure and satisfactory proof thereof, with the following exception(s):

Exceptions:

All provided electrical components, including the linear actuator shall have the following warranty period:

Year 1-2: 100% Coverage

Year 3: 60% Coverage (Customer is responsible for 40% of replacement cost)

Year 4: 50% Coverage (Customer is responsible for 50% of replacement cost)

Year 5: 40% Coverage (Customer is responsible for 60% of replacement cost)

Hydraulic actuators and mesh slings shall have a warranty period of *one (1) year from the date of original purchase*.

Powder coat finish scratches, scrapes, corrosion, or dents from customers normal use, negligence, or abuse.

This warranty specifically excludes reimbursement for labor to remove, repair, or install the product and any shipping charges. These warranties do not cover any damages due to accident, force majeure, act of nature, misuse, abuse, negligence or failure to properly maintain any products, or normal wear and tear from day to day operations. In the event that any products are altered, repaired, or improperly installed or improperly used by anyone without the prior written approval by Aqua Creek, all warranties are void. **IMPORTANT: AMOUNT OF WEIGHT PLACED ON LIFT SHALL NOT EXCEED THE RATED LIFTING CAPACITY FOR THE LIFT. NEVER OPERATE THE LIFT UNDER LOAD IN A DRY POOL (WITH NO WATER IN THE POOL).** It is the responsibility of the lift owner to verify the weight of the patron for warranty claim purposes and to ensure that the lift is not overloaded. Non-payment for product to Aqua Creek may void warranty.

To initiate a warranty claim, the owner of an Aqua Creek product must provide the place of purchase, in writing, with a full description of the product, its serial number, the dates of purchase and installation, and the exact nature of the defect. Within thirty (30) days after receipt of a written warranty claim by Aqua Creek, and barring any unforeseen delays, the place of purchase will be notified of Aqua Creek's decision regarding the claim.

If requested by Aqua Creek, any defective product must be returned, freight prepaid by customer, to Aqua Creek's designated factory location or duly appointed distributor for inspection and/or repair. Aqua Creek will, at its option, repair or replace the failed or defective item, and deliver the repaired product or replacement to the customer. All freight charges are the responsibility of the customer. Products returned to Aqua Creek for which Aqua Creek provides replacement under this limited warranty shall become the property of Aqua Creek. A new warranty period shall NOT be established for the repaired or replaced products. Such products shall remain under warranty only for the remainder of the original warranty period on the original products purchased.

This written limited warranty constitutes the final, complete and exclusive statement of warranty terms. No person or organization is authorized to make any other specific or implied warranties or representations on behalf of Aqua Creek.

THE WARRANTIES SET FORTH HEREIN ARE IN LIEU OF ALL OTHER WARRANTIES, EXPRESSED OR IMPLIED, WHICH ARE HEREBY DISCLAIMED AND EXCLUDED, INCLUDING WITHOUT LIMITATION ANY WARRANTY OF MERCHANTABILITY OR FITNESS FOR A PARTICULAR PURPOSE OR USE.

THE SOLE AND EXCLUSIVE REMEDIES FOR BREACH OF ANY AND ALL WARRANTIES WITH RESPECT TO THE PRODUCTS SHALL BE LIMITED TO REPAIR OR REPLACEMENT AT AQUA CREEK'S DESIGNATED FACTORY LOCATION, OR DULY APPOINTED DISTRIBUTOR, OR IN PLACE AT AQUA CREEK'S OPTION. IN NO EVENT SHALL AQUA CREEK'S LIABILITY EXCEED THE ENTIRE AMOUNT PAID TO AQUA CREEK BY THE ORIGINAL PURCHASER FOR THE FAILED OR DEFECTIVE PRODUCT. IN NO EVENT SHALL AQUA CREEK PRODUCTS, LLC BE LIABLE FOR ANY INCIDENTAL, CONSEQUENTIAL, SPECIAL, INDIRECT, PUNITIVE OR EXEMPLARY DAMAGES OR LOST PROFITS FROM ANY BREACH OF THIS LIMITED WARRANTY OR OTHERWISE.

THIS WARRANTY GIVES YOU SPECIFIC LEGAL RIGHTS AND YOU MAY ALSO HAVE OTHER RIGHTS, WHICH MAY VARY FROM STATE TO STATE. SOME STATES DO NOT ALLOW THE EXCLUSION OR LIMITATION OF INCIDENTAL, SPECIAL OR CONSEQUENTIAL DAMAGES, SO SOME OF THE ABOVE LIMITATIONS OR EXCLUSIONS MAY NOT APPLY TO YOU.