



INSTALLATION & OPERATION MANUAL

MODEL: ANCHOR - EXTENSION ARM - 12.00",24.00",30.00"

CATALOG #: F-EXT12,F-EXT24,F-EXT30

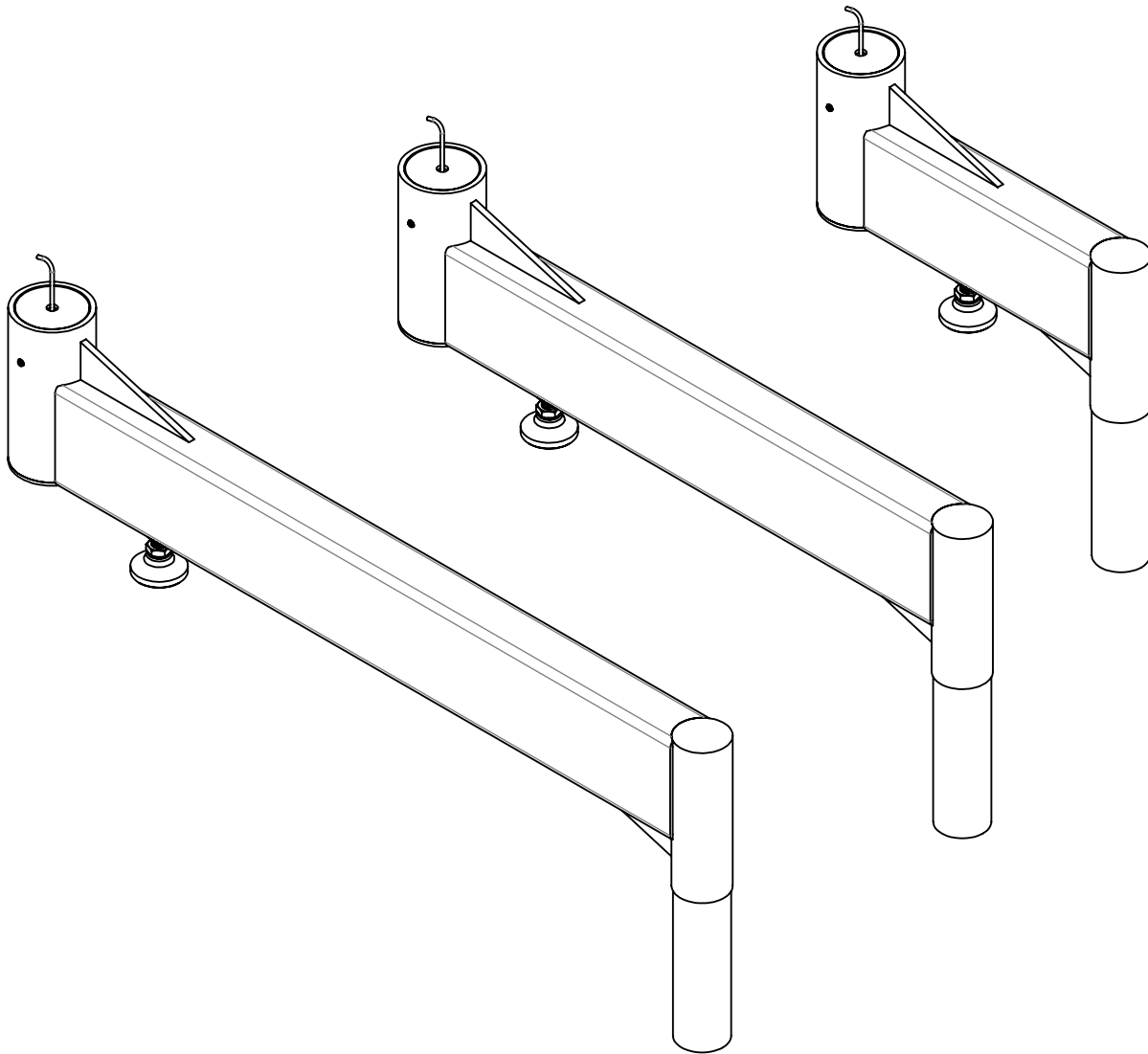




TABLE OF CONTENTS

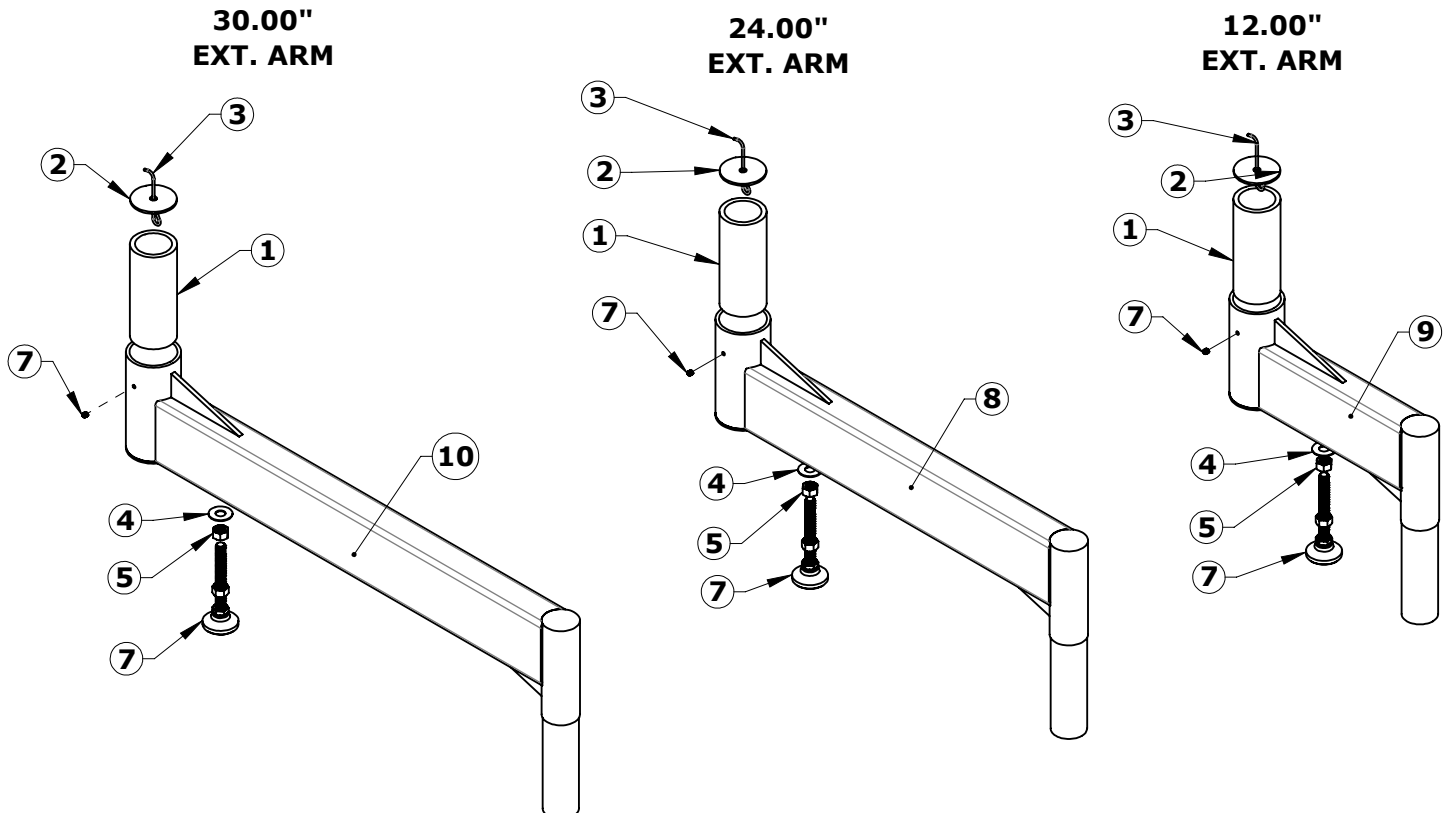
COVER SHEET.....	1
PRODUCT COMPONENTS/REPLACEMENT PARTS.....	3
ANCHOR SETBACK SECTION VIEWS (12.00" EXTENSION ARM).....	4
ANCHOR SETBACK SECTION VIEWS (24.00" EXTENSION ARM).....	5
ANCHOR SETBACK SECTION VIEWS (30.00" EXTENSION ARM).....	6
PRODUCT INSTALLATION STEPS (1 THRU 3).....	7
PRODUCT INSTALLATION STEPS (4 THRU 6).....	8
PRODUCT ALIGNMENT DIAGRAMS.....	9

PRODUCT COMPONENTS

ANCHOR - EXTENSION ARM
12.00" - INV03515
24.00" - INV03362
30.00" - INV01382

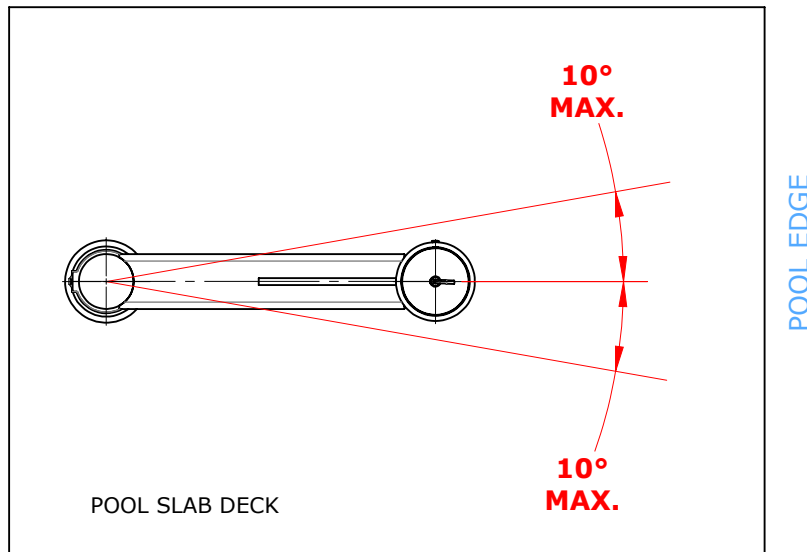
ITEM NO.	PART NO.	12" NO. REQ'D	24" NO. REQ'D	30" NO. REQ'D	DESCRIPTION
1	INV01598	1	1	1	MACHINED - SLEEVE - 1.930"ID X 5.86"T X 2.46OD
2	INV00803	1	1	1	LASER/WJ - DISC - 2.43" DIA. X .38" HOLE
3	INV01512	1	1	1	PART - ANCHOR CAP - REMOVAL TOOL
4	INV01169	1	1	1	WF - 1/2" FLAT WASHER
5	INV00724	1	1	1	NH - 1/2"-13 HEX NUT
7	INV01085	1	1	1	SS - 1/4"-20X1/4" SET SCREW
7	INV02560	1	1	1	LF - LEVELING FOOT - 1/2"-13X4" - 5 1/4" OVERALL
8	INV03363	1	-	-	WELDMENT - ANCHOR EXTENSION ARM - 24.00"
9	INV03516	-	1	-	WELDMENT - ANCHOR EXTENSION ARM - 12.00"
10	INV02178	-	-	1	WELDMENT - ANCHOR EXTENSION ARM - 30.00"

Anchor extensions are available in three lengths: 12", 24", and 30". All accompanying components are identical across all designs. Each extension is tagged with its corresponding row number in the parts reorder table for easy reference.

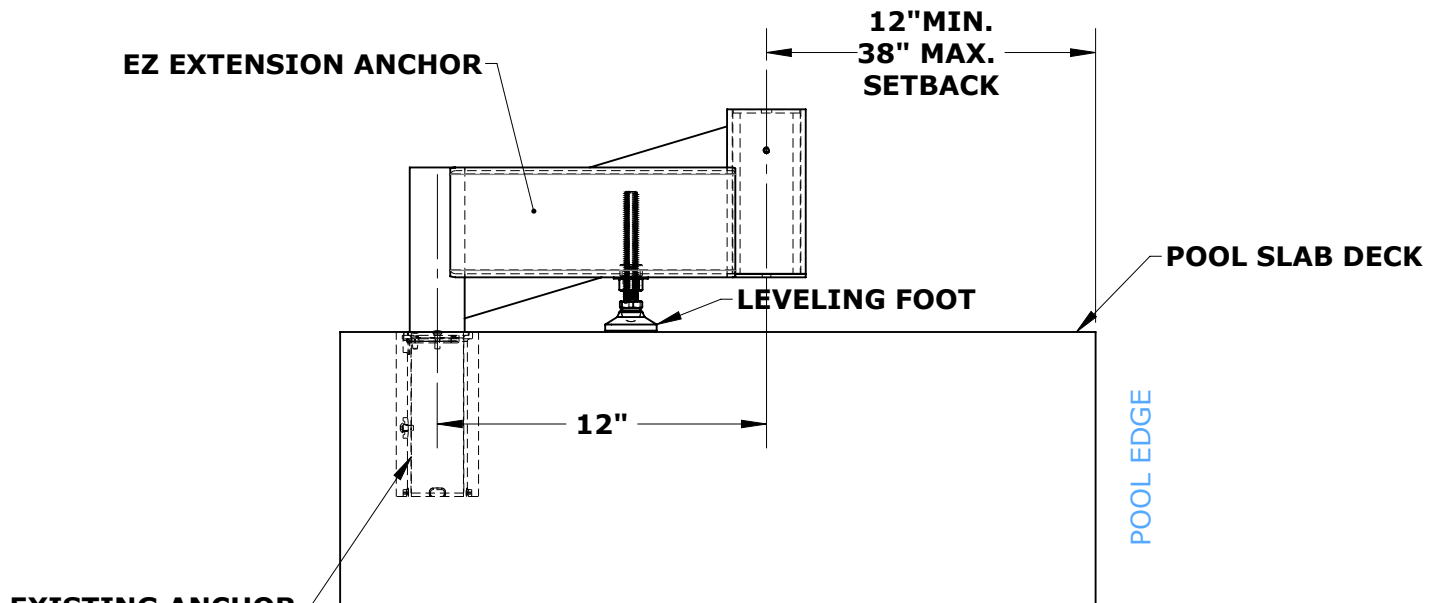


12.00" EXT. ARM ANCHOR SETBACK

NOTE: **RED** INDICATES MAX POSITIONING RANGE FOR INSERTING LIFT.



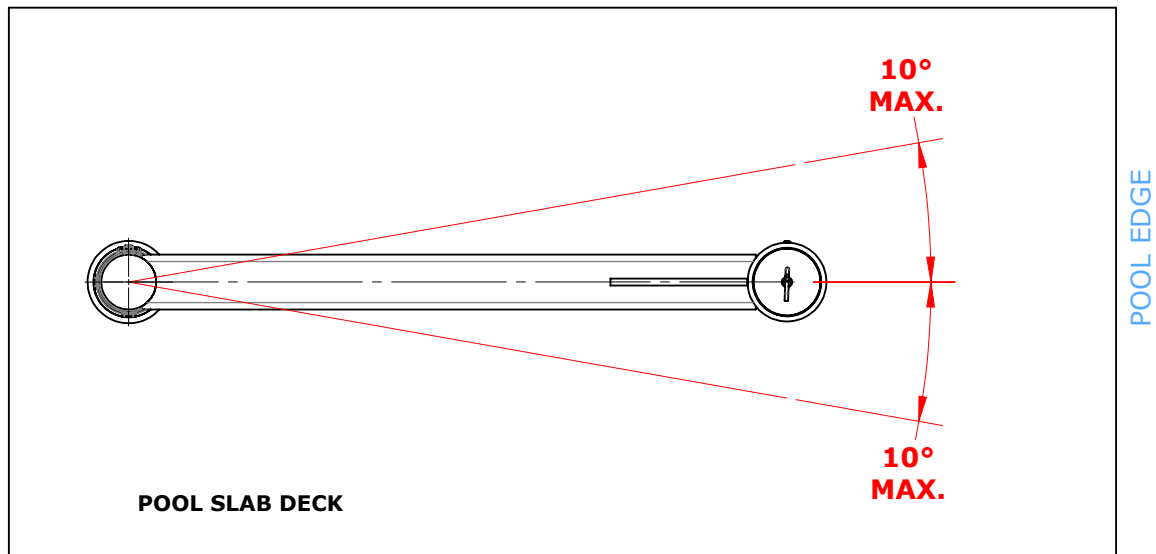
TOP VIEW



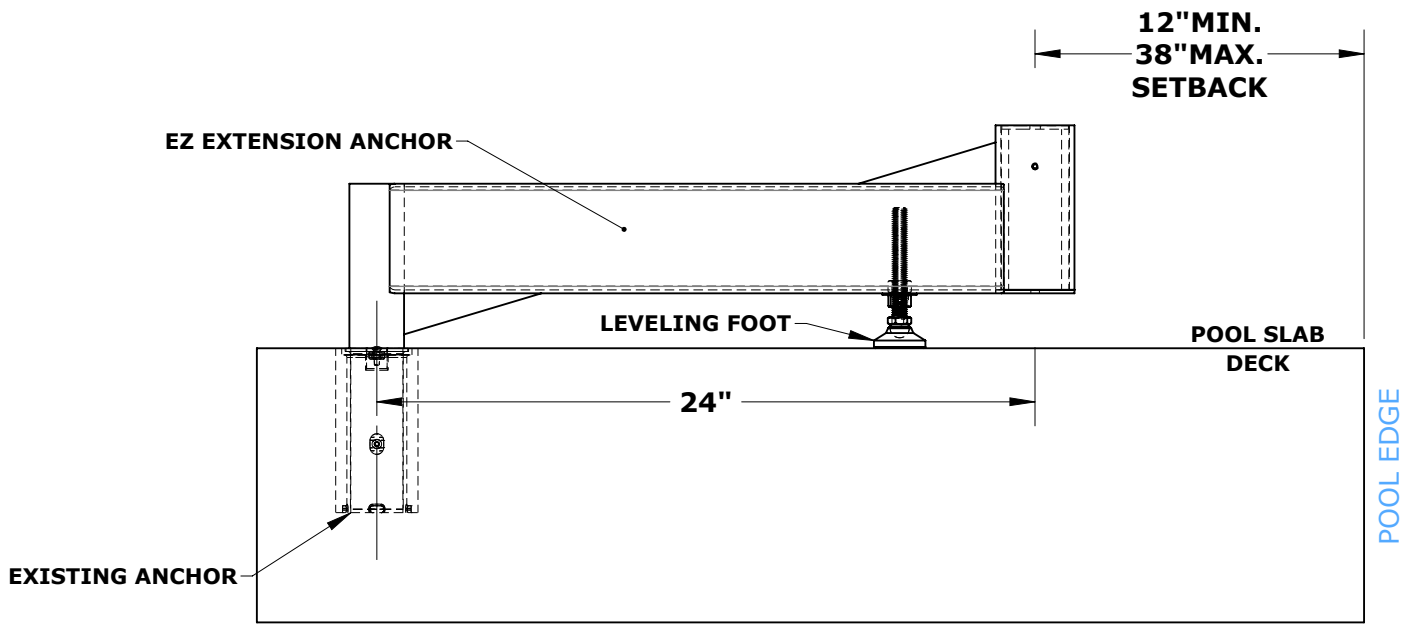
FRONT VIEW

24.00" EXT. ARM ANCHOR SETBACK

NOTE: RED INDICATES MAX POSITIONING RANGE FOR INSERTING LIFT.



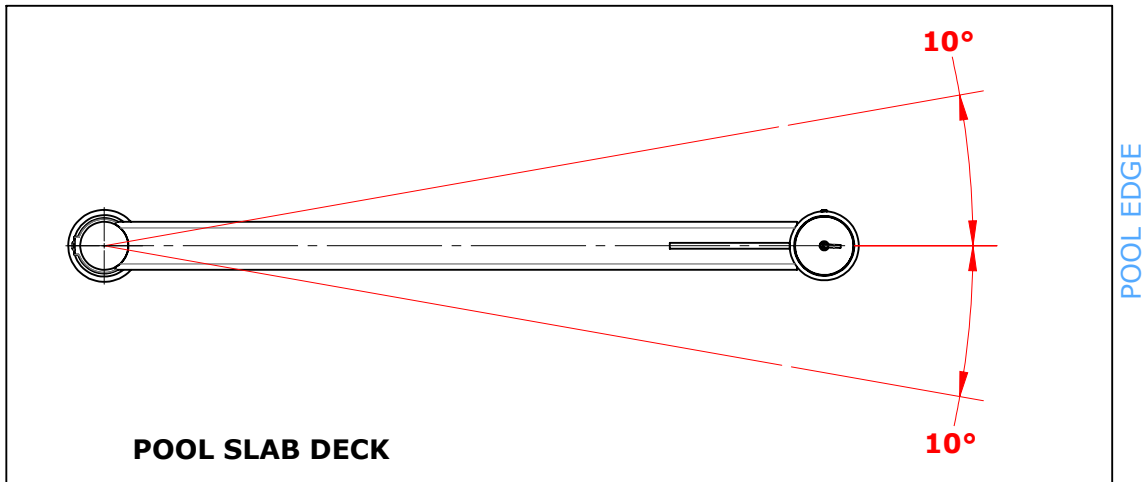
TOP VIEW



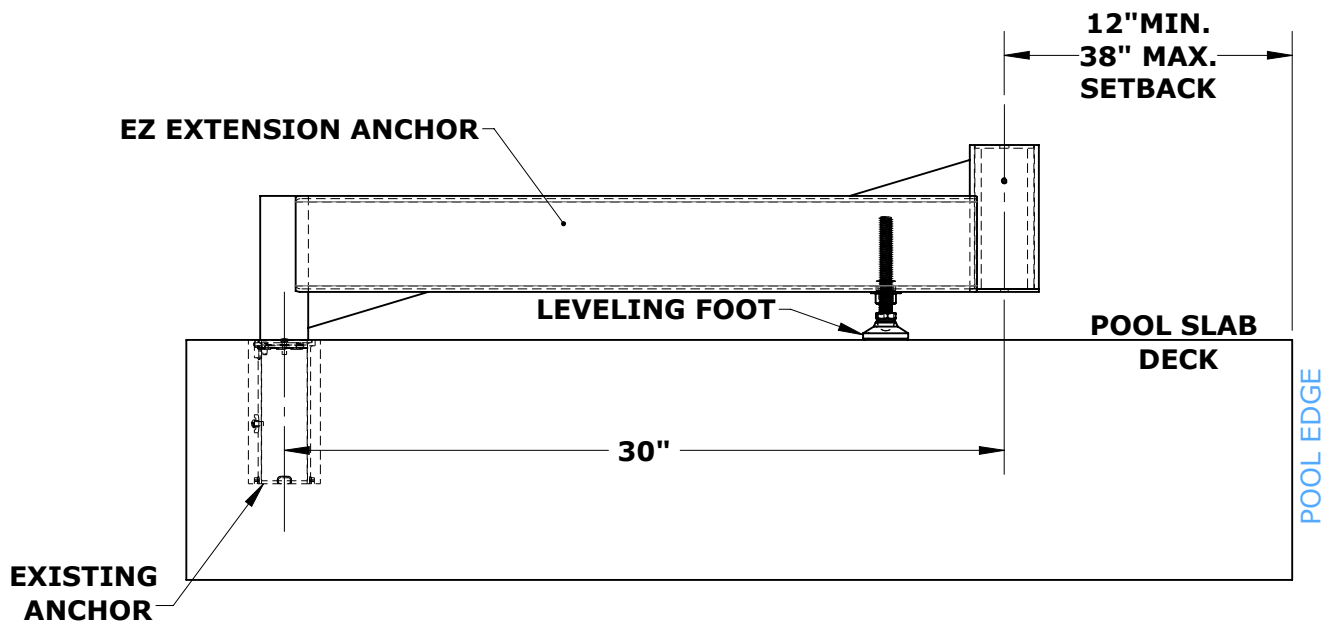
FRONT VIEW

30.00" EXT. ARM ANCHOR SETBACK

NOTE: **RED** INDICATES MAX POSITIONING RANGE FOR INSERTING LIFT.

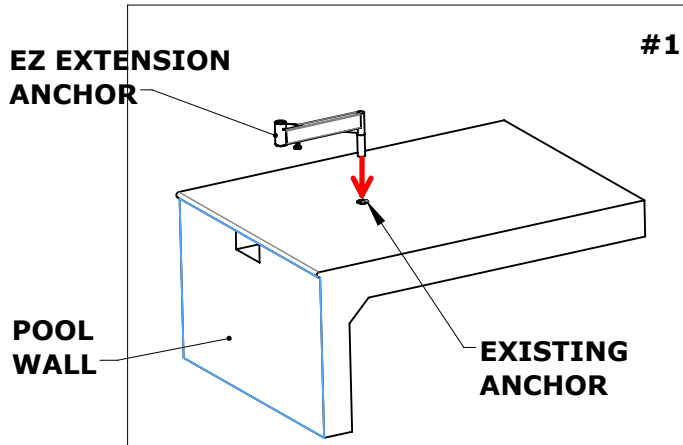


TOP VIEW



FRONT VIEW

EXTENSION ANCHOR INSTALLATION

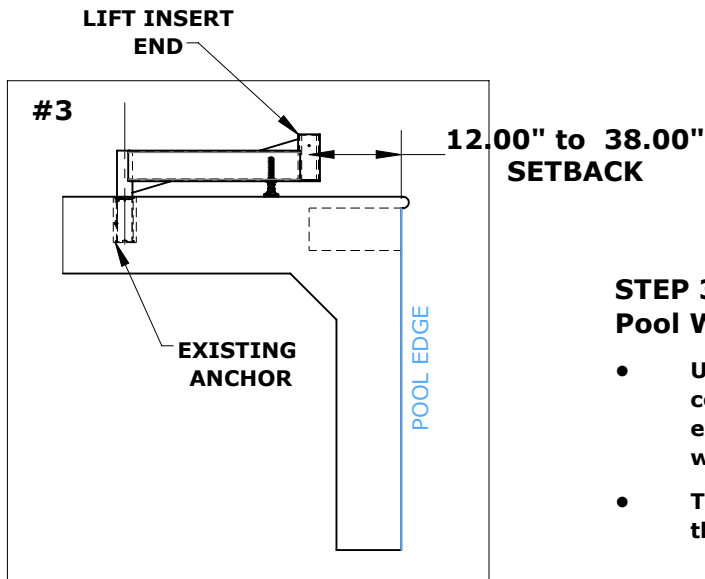
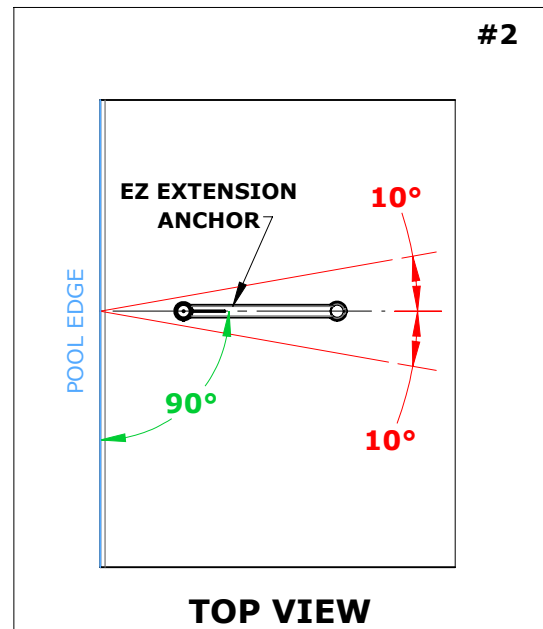


STEP 1. Insert the EZ Extension Anchor:

- Identify the existing anchor location on the pool deck.
- Carefully **INSERT** the EZ Extension Anchor into this location, ensuring it is fully seated and secure.

STEP 2. Align the Anchor Properly:

- Adjust the orientation of the anchor so it is running perpendicular (**90 degrees**) to the pool wall or within **10 degrees** of this alignment.
- Use a **SPEED SQUARE** or alignment tool to ensure accuracy, as proper alignment is essential for safe and effective lift operation.

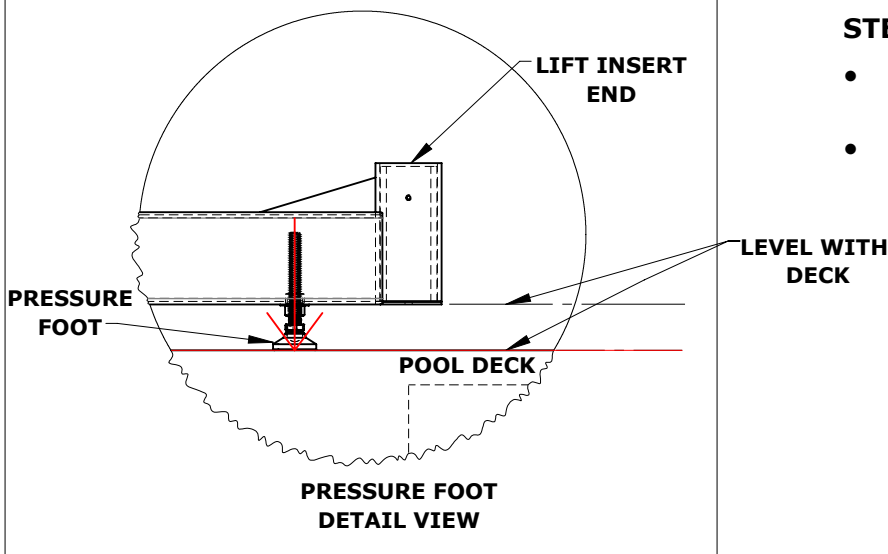


STEP 3. Position the Anchor End Relative to the Pool Wall:

- Use a **MEASURING TAPE** to precisely measure and confirm that the center of the (LIFT INSERT END) of the extension arm is positioned 12" to 38" from the pool wall.
- This setback ensures the lift will clear the wall and place the occupant safely into the water.

EXTENSION ANCHOR INSTALLATION

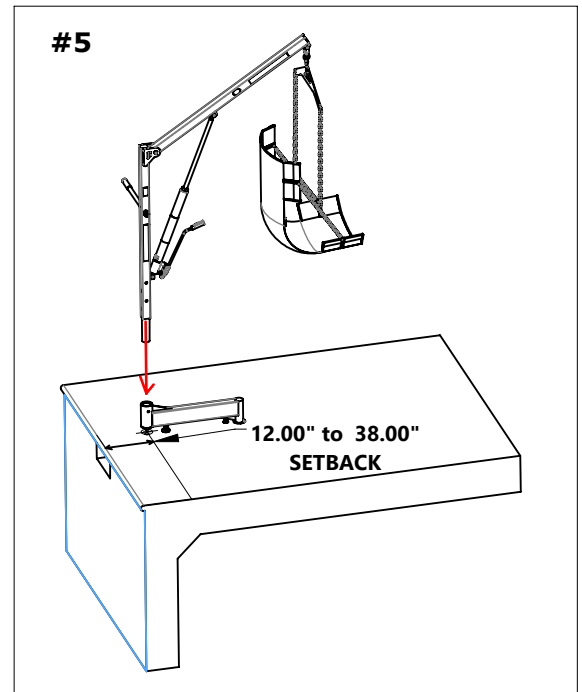
#4



STEP 4. Adjust the Pressure Foot:

- Lower the pressure foot on the anchor until it rests securely on the deck surface.
- Ensure the extension anchor is level with the pool deck using a spirit level, and adjust if necessary.

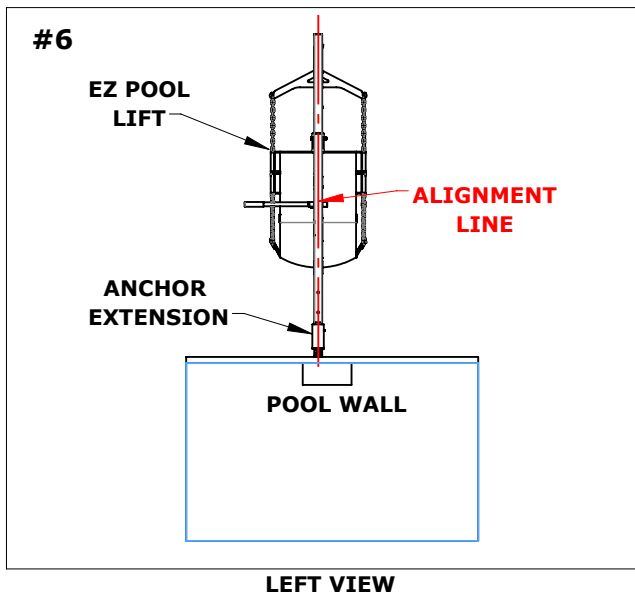
#5



STEP 5. Insert the EZ Pool Lift into the Anchor:

- **INSERT** the EZ Pool Lift Series into the EZ Extension Anchor, ensuring a secure fit.
- Double-check that the anchor's setback of 12" to 38" from the pool wall is maintained for proper wall

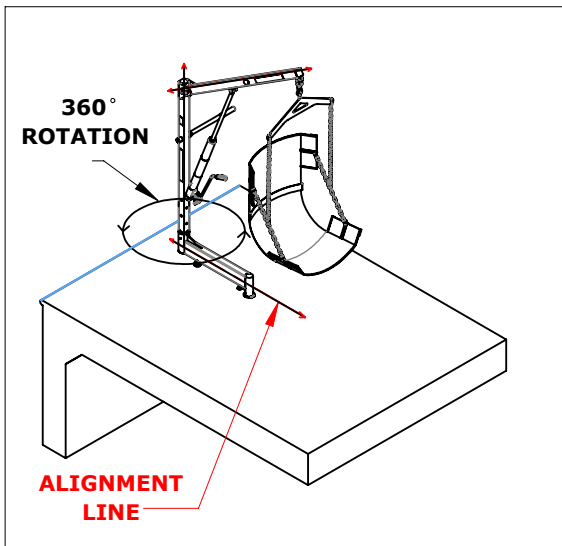
#6



STEP 6. Align the Sling Seat with the Anchor:

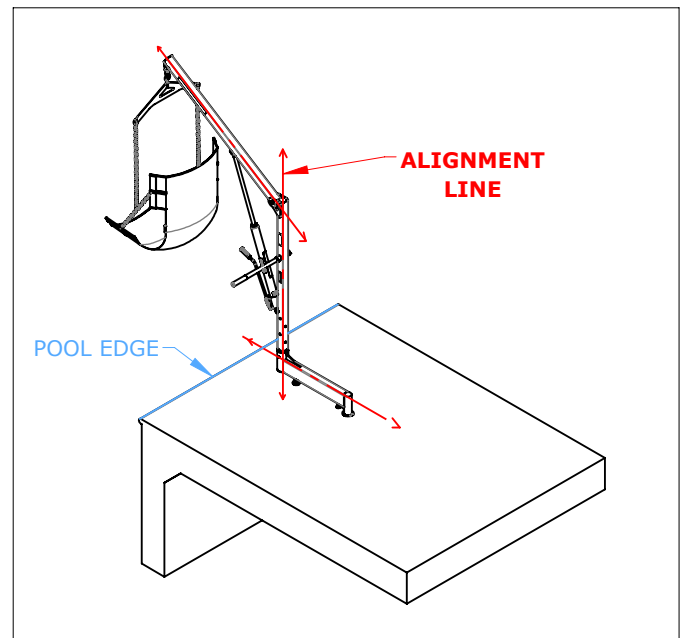
- Confirm that the sling seat is in line with the extension anchor for optimal operation.

EXTENSION ANCHOR INSTALLATION



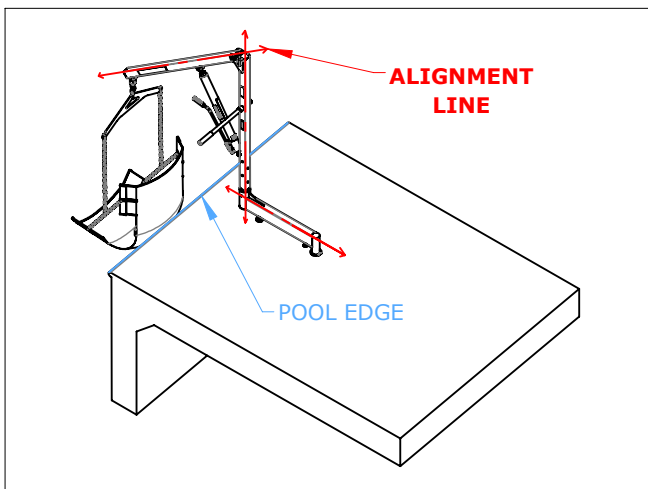
DECK LOADING
POSITION

NOTE: Always load and unload the occupant to and from the sling seat while the sling is **IN LINE** with the anchor. This alignment minimizes unnecessary strain on the anchor and ensures smooth operation.



ROTATED 180°
OVER POOL
POSITION

Refer to the diagrams (on this page) to confirm alignment and positioning, ensuring all components match the intended design.



LOWERED INTO POOL
POSITION