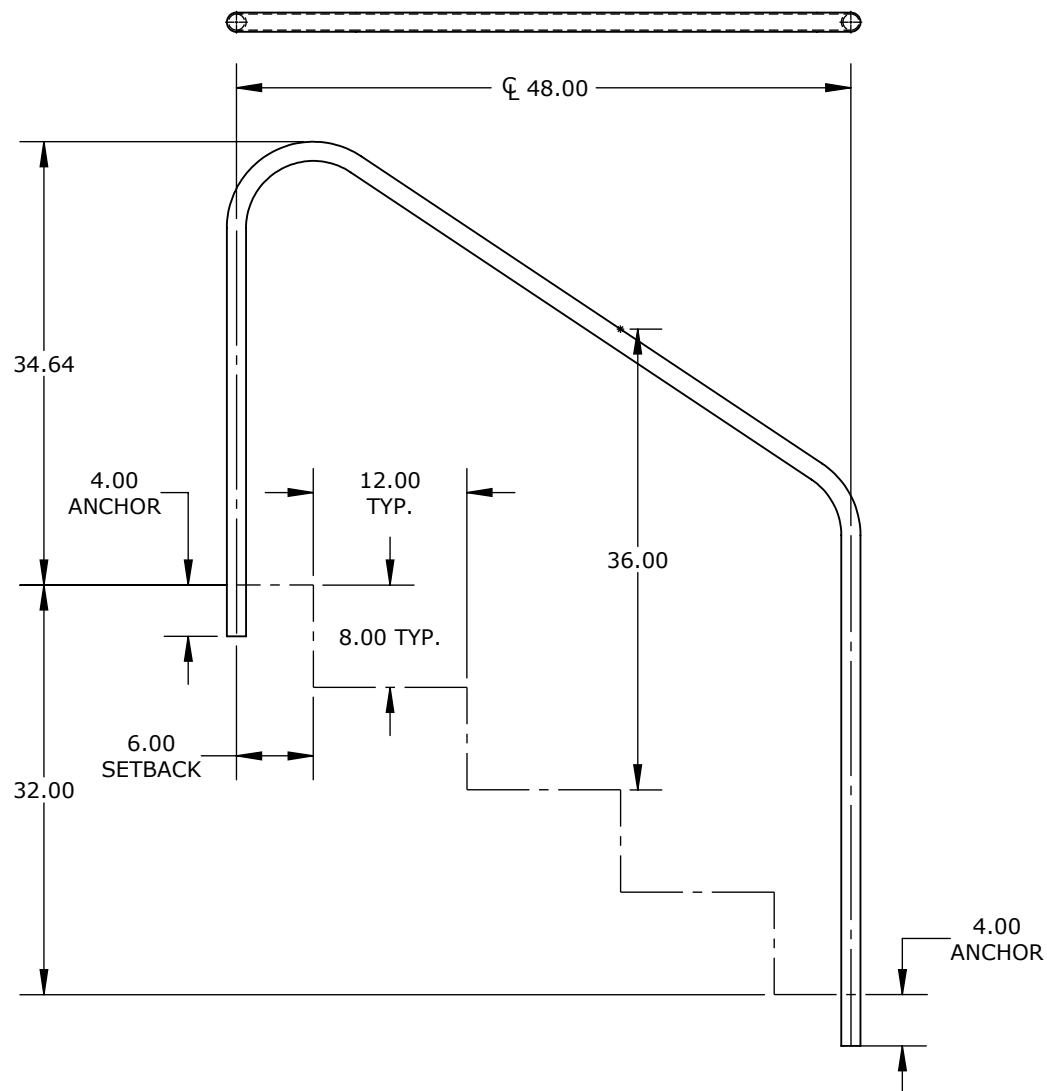


THE AQUA CREEK PRODUCTS 2 BEND STAIR RAIL IS AN ADA COMPLIANT RAIL MEASURING 34" TO 36" ABOVE THE FINISHED SURFACE. THE STAIR RAIL IS DESIGNED TO RUN PARALLEL TO THE RISE AND RUN OF THE STEPS.

THE AQUA CREEK PRODUCTS STAIR RAIL SHALL BE FABRICATED OF 1.50" O.D. X .120" WALL THICKNESS 316L STAINLESS STEEL. THE STAIR RAIL SHALL BE POLISHED TO A NEAR #7 FINISH OR A 600 GRIT.

IT SHALL HAVE TWO BENDS THAT ARE TO BE WRINKLE FREE. THE STAIR RAIL SHALL BE DESIGNED FOR A SETBACK OF 6" FROM POOL EDGE.

THE AQUA CREEK PRODUCTS STAIR RAIL SHALL BE SUPPORTED BY TWO (2) 4" BRONZE WEDGE ANCHORS - PART# INV03707. (NOT INCLUDED) OPTIONAL STAINLESS STEEL ESCUCHEONS ARE ALSO AVAILABLE - PART# INV03706. (NOT INCLUDED)



## TRUPRO - 2-BEND STAIR RAIL - 48.00" LONG X 1.50" OD X .120 WALL - 316LSS

CATALOG NO. TSR-2B48-461

PART NO. INV03719



9889 GARRYMORE LANE  
MISSOULA, MT 59808  
(406) 549-0769  
FAX (406) 549-2602  
www.AquaCreek.com

### PROPRIETARY AND CONFIDENTIAL INFORMATION

THIS DRAWING AND ALL INFORMATION CONTAINED HEREIN IS THE SOLE PROPERTY OF AQUA CREEK PRODUCTS LLC. ANY REPRODUCTION IN PART OR AS A WHOLE WITHOUT WRITTEN PERMISSION FROM AQUA CREEK IS PROHIBITED.

\*SPECIFICATIONS ARE SUBJECT TO CHANGE WITHOUT NOTICE

DIMENSIONS ARE IN INCHES  
UNLESS OTHERWISE SHOWN  
FRACTIONAL: .....  $\pm 1/16$   
ANGULAR: .....  $\pm 1^\circ$   
TWO PLACE DECIMAL: ....  $\pm .01$   
THREE PLACE DECIMAL: ..  $\pm .005$

MATERIAL: 1.50"x.120" 316 POLISHED S.S. RND. TUBE  
FINISH: NEAR #7 FINISH OR 600 GRIT  
APPROX. WEIGHT: 20.13 LBS.

SCALE  
1:15  
SHEET  
1

TRUPRO - 2-BEND STAIR RAIL - 48.00" LONG X 1.50" OD X .120 WALL - 316LSS - INV03719

MODEL  
1  
REVISION