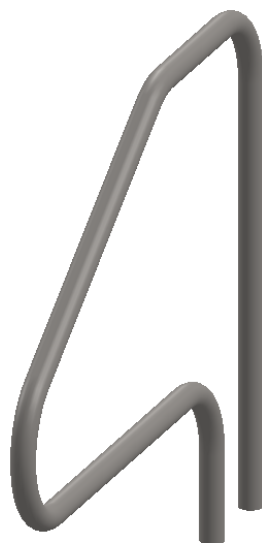
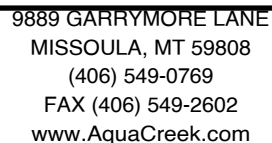


MODEL
1
REVISION

Technical drawing of a bent pipe assembly. The drawing shows a pipe with a horizontal section on the left, a vertical section on the right, and a 90-degree bend connecting them. The horizontal section has a total length of 48 inches. The vertical section has a height of 36 inches. The bend is defined by a radius of 12 inches. The pipe has an outer diameter of 1.90 inches, indicated by the symbol $(\phi 1.90)$. The pipe is shown with a centerline and a dashed line indicating the bend. The drawing is labeled with dimensions in inches: 48", 12", 36", 8", and 4". The label "ANCHOR" is present at the bottom right, indicating the fixed end of the pipe.



CATALOG NO. TDM-4B48-141
PART NO. INV03739



THIS DRAWING AND ALL INFORMATION CONTAINED HEREIN IS THE SOLE PROPERTY OF AQUA CREEK PRODUCTS LLC. ANY REPRODUCTION IN PART OR AS A WHOLE WITHOUT WRITTEN PERMISSION FROM AQUA CREEK IS PROHIBITED.

DIMENSIONS ARE IN INCHES
UNLESS OTHERWISE SHOWN
FRACTIONAL: $\pm 1/16$
ANGULAR: $\pm 1^\circ$
TWO PLACE DECIMAL: $\pm .01$
THREE PLACE DECIMAL: .. $\pm .005$

MATERIAL: 1.90"x.065" 304 POLISHED S.S. RND. TUBE
FINISH: NEAR #7 POLISH OR 600 GRIT
APPROX. WEIGHT: 15.57 LBS.

SCALE
1:14
SHEET
1

TRUPRO - DECK MOUNTED 4 BEND RAIL - 48.00" X 1.90 OD X .065 WALL 304LSS - INV03739