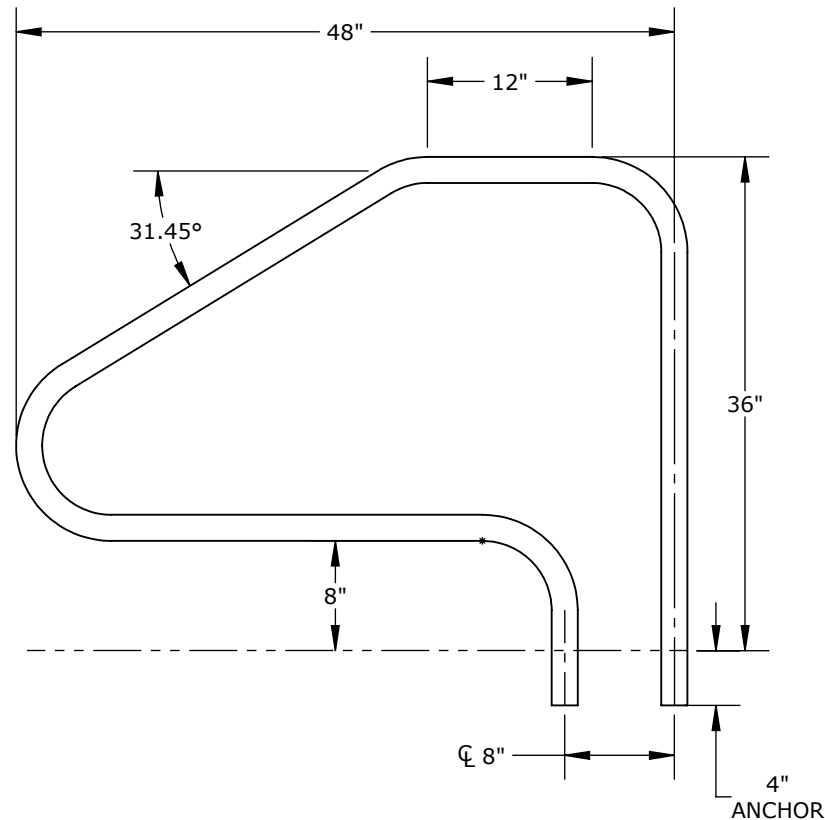
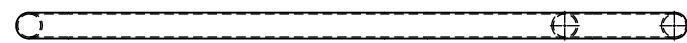
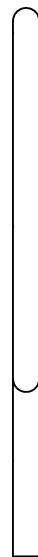
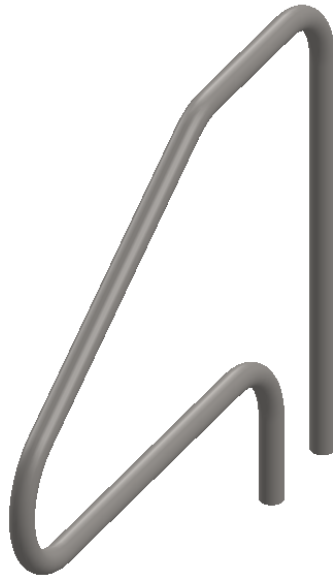


THE AQUA CREEK PRODUCTS FLAT DECK MOUNTED RAIL IS AN ADA COMPLIANT RAIL MEASURING 34" TO 36" ABOVE THE FINISHED SURFACE.

THE AQUA CREEK PRODUCTS DECK MOUNTED RAILS SHALL BE FABRICATED OF 1.90" O.D. X .109" WALL THICKNESS 304L STAINLESS STEEL. EACH RAIL SHALL BE POLISHED TO A NEAR #7 FINISH OR A 600 GRIT.

EACH RAIL SHALL HAVE FOUR BENDS THAT ARE TO BE WRINKLE FREE. THE DECK MOUNTED RAIL SHALL BE DESIGNED FOR A SETBACK OF 48" FROM POOL EDGE.

THE AQUA CREEK PRODUCTS FLAT DECK MOUNTED RAIL SHALL BE SUPPORTED BY TWO (2) 4" BRONZE WEDGE ANCHORS - PART# INV01925 (NOT INCLUDED). OPTIONAL STAINLESS STEEL ESCUCHEONS ARE ALSO AVAILABLE - PART# INV03705 (NOT INCLUDED).



TRUPRO - DECK MOUNTED 4 BEND RAIL - 48.00" X 1.90 OD X .109 WALL 304LSS

CATALOG NO. TDM-4B48-241
PART NO. INV03740



9889 GARRYMORE LANE
MISSOULA, MT 59808
(406) 549-0769
FAX (406) 549-2602
www.AquaCreek.com

PROPRIETARY AND CONFIDENTIAL INFORMATION

THIS DRAWING AND ALL INFORMATION CONTAINED HEREIN IS THE SOLE PROPERTY OF AQUA CREEK PRODUCTS LLC. ANY REPRODUCTION IN PART OR AS A WHOLE WITHOUT WRITTEN PERMISSION FROM AQUA CREEK IS PROHIBITED.

*SPECIFICATIONS ARE SUBJECT TO CHANGE WITHOUT NOTICE

DIMENSIONS ARE IN INCHES
UNLESS OTHERWISE SHOWN
FRACTIONAL: $\pm 1/16$
ANGULAR: $\pm 1^\circ$
TWO PLACE DECIMAL: $\pm .01$
THREE PLACE DECIMAL: .. $\pm .005$

MATERIAL: 1.90"x.109" 304 POLISHED S.S. RND. TUBE
FINISH: NEAR #7 POLISH OR 600 GRIT
APPROX. WEIGHT: 25.48 LBS.