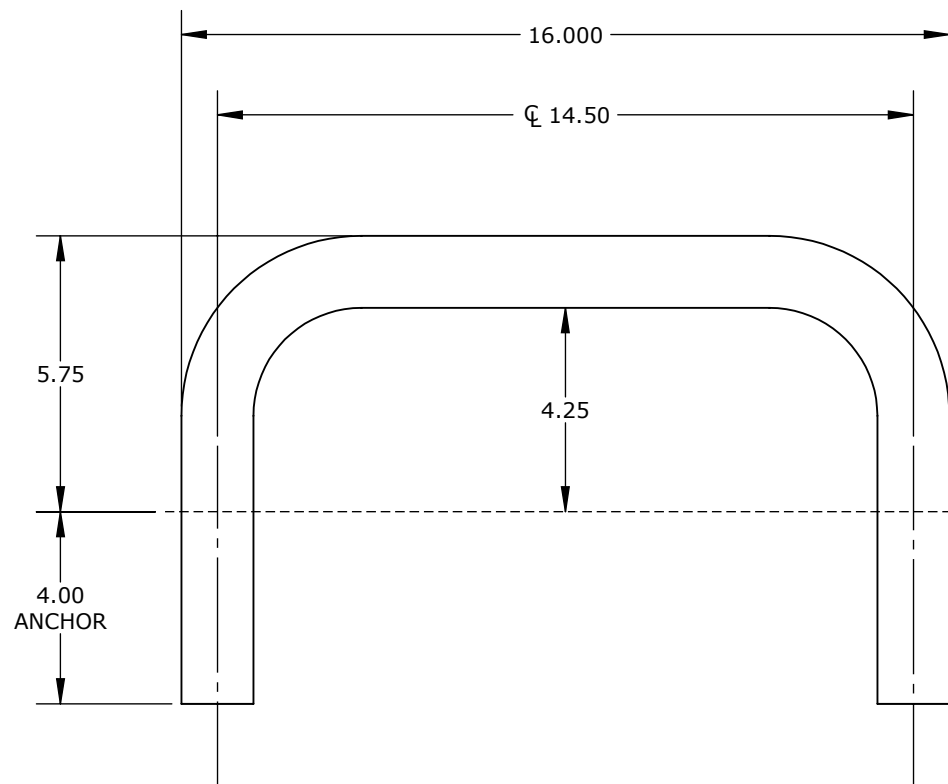
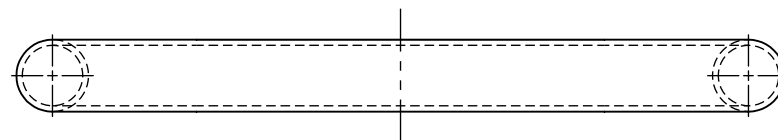


THE AQUA CREEK PRODUCTS 18" ADA TRANSFER RAIL MEASURES 5 3/4" ABOVE THE FINISHED SURFACE. THE ADA TRANSFER RAIL IS DESIGNED TO RUN PARALLEL TO THE DECK SURFACE.

THE AQUA CREEK PRODUCTS 18" ADA TRANSFER RAIL SHALL BE FABRICATED OF 1.50" O.D. X .120" WALL THICKNESS 316L STAINLESS STEEL. THE TRANSFER RAIL SHALL BE POLISHED TO A NEAR #7 FINISH OR A 600 GRIT.

IT SHALL HAVE TWO BENDS THAT ARE TO BE WRINKLE FREE. THE ADA TRANSFER RAIL SHALL BE DESIGNED WITH AN ANCHOR SPACING OF 14.5".

THE AQUA CREEK PRODUCTS ADA TRANSFER RAIL SHALL BE SUPPORTED BY TWO (2) 4" BRONZE WEDGE ANCHORS - PART# INV03707 (NOT INCLUDED). OPTIONAL STAINLESS STEEL ESCUCHEONS ARE ALSO AVAILABLE - PART# INV03706 (NOT INCLUDED).



TRUPRO - ADA TRANSFER GRAB RAIL - 18.00" X 1.50 OD X .120 WALL 316LSS - NO FLANGE

CATALOG NO. TTR-NF18-461

PART NO. INV03753



9889 GARRYMORE LANE
MISSOULA, MT 59808
(406) 549-0769
FAX (406) 549-2602
www.AquaCreek.com

PROPRIETARY AND CONFIDENTIAL INFORMATION

THIS DRAWING AND ALL INFORMATION CONTAINED HEREIN IS THE SOLE PROPERTY OF AQUA CREEK PRODUCTS LLC. ANY REPRODUCTION IN PART OR AS A WHOLE WITHOUT WRITTEN PERMISSION FROM AQUA CREEK IS PROHIBITED.

*SPECIFICATIONS ARE SUBJECT TO CHANGE WITHOUT NOTICE

DIMENSIONS ARE IN INCHES
UNLESS OTHERWISE SHOWN
FRACTIONAL: $\pm 1/16$
ANGULAR: $\pm 1^\circ$
TWO PLACE DECIMAL: $\pm .05$
THREE PLACE DECIMAL: $\pm .005$

MATERIAL: 1.50"x.120" 316 POLISHED S.S. RND. TUBE
FINISH: NEAR #7 FINISH OR 600 GRIT
APPROX. WEIGHT: 4.50 LBS.