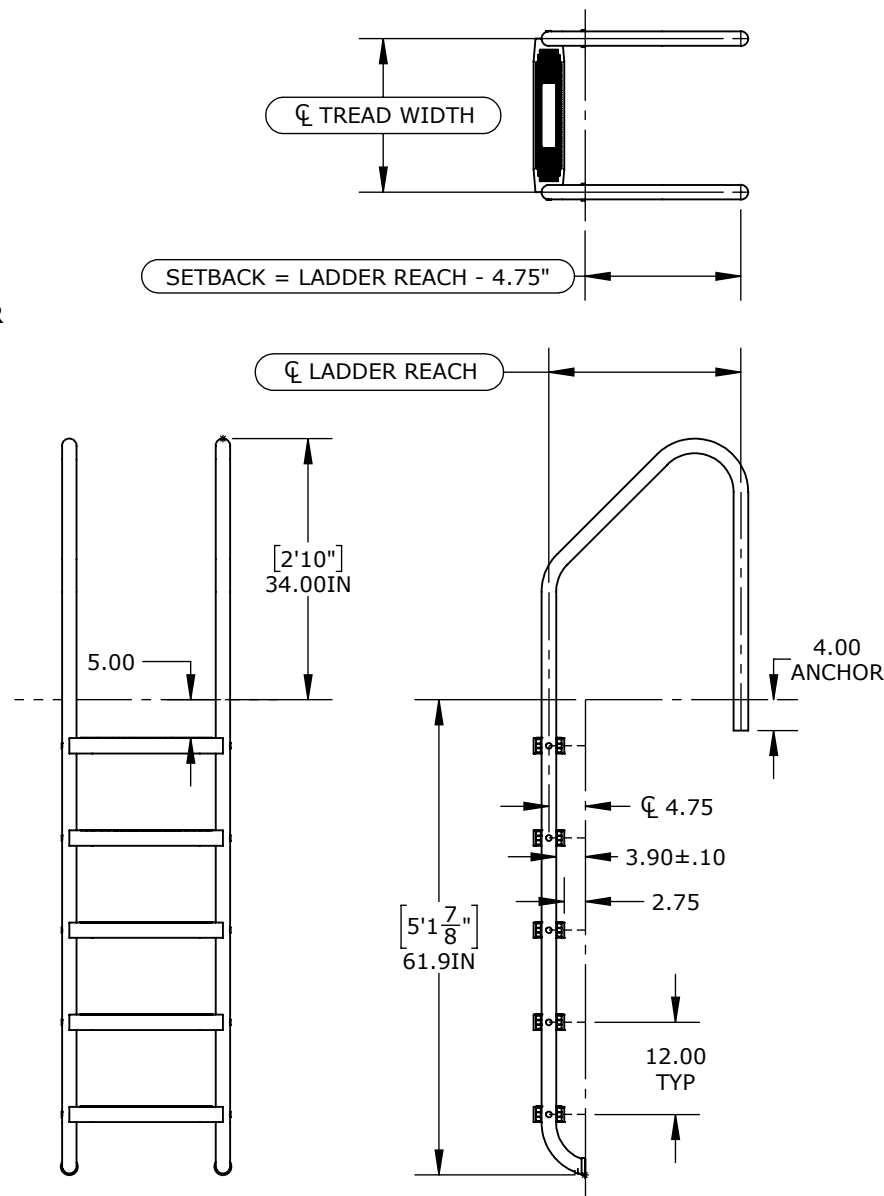


THE AQUA CREEK PRODUCTS CROSS-BRACED, 5 TREAD LADDER IS A 2024 INTERNATIONAL SWIMMING POOL & SPA CODE AND 2024 MODEL AQUATIC HEALTH CODE COMPLIANT LADDER MEASURING 34" ABOVE THE FINISHED SURFACE.

THE AQUA CREEK PRODUCTS CROSS-BRACED LADDER SHALL BE FABRICATED OF CORROSION RESISTANT STAINLESS STEEL WITH A VARIETY OF PROTECTIVE FINISHES.

THE CROSS-BRACED LADDER SHALL HAVE THREE (3) BENDS THAT ARE TO BE WRINKLE FREE WITH TWO (2) RUBBER BUMPERS. THE CROSS-BRACED LADDER SHALL BE DESIGNED FOR A SETBACK OF THE LADDER REACH MINUS (-) 4.75" FROM POOL EDGE.

THE AQUA CREEK PRODUCTS CROSS-BRACED LADDER SHALL BE SUPPORTED BY TWO (2) 4" BRONZE WEDGE ANCHORS (SOLD SEPARATELY). OPTIONAL STAINLESS STEEL ESCUCHEONS ARE ALSO AVAILABLE (SOLD SEPARATELY).



TRUPRO - STANDARD LADDER - 5 TREAD

CATALOG NO. TSL-5XX-XXX

PART NO. SEE TABLE



9889 GARRYMORE LANE
MISSOULA, MT 59808
(406) 549-0769
FAX (406) 549-2602
www.AquaCreek.com

PROPRIETARY AND CONFIDENTIAL INFORMATION
THIS DRAWING AND ALL INFORMATION CONTAINED HEREIN IS THE SOLE PROPERTY OF AQUA CREEK PRODUCTS LLC. ANY REPRODUCTION IN PART OR AS A WHOLE WITHOUT WRITTEN PERMISSION FROM AQUA CREEK IS PROHIBITED.

*SPECIFICATIONS ARE SUBJECT TO CHANGE WITHOUT NOTICE

DIMENSIONS ARE IN INCHES
UNLESS OTHERWISE SHOWN
FRACTIONAL: ±1/4
ANGULAR: ±1°
TWO PLACE DECIMAL: ±.01
THREE PLACE DECIMAL: .. ±.005

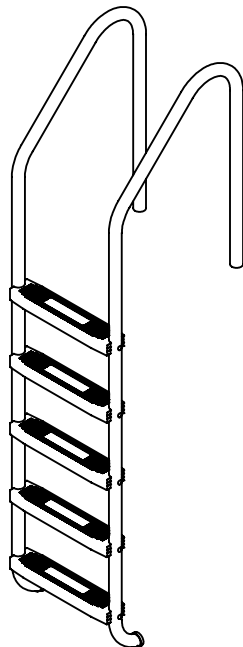
MATERIAL: STAINLESS STEEL/ABS
FINISH: TBD
APPROX. WEIGHT: 40-65 LBS

SCALE
1:25
SHEET

MODEL
1
REVISION

TRUPRO - STANDARD LADDER - 5 TREAD

1



LADDER CATALOG NUMBERING SCHEME

Column →	A	B	-	C	D	E	-	F	G	H
Part No	T	SL	-	5	4	1	-	1	4	1

Definition ↓		
A Series Name	T	= TruPro
B Ladder Type	SL	= Standard Ladder
C Number of treads	5	= 5 Treads
D Tread Type	4	= 20" Straight ABS
E Ladder Reach	1	= 25 Inches
	2	= 27 Inches
	3	= 30 Inches
	4	= 36 Inches
F Material Type	1	= 1.90 x .065
	2	= 1.90 x .109
	4	= 1.50 x .120
G Material Grade	4	= 304L Stainless Steel
	6	= 316L Marine Grade Stainless Steel
H Finish	1	= Near #7 or 600 Grit Polish

CURRENT STANDARD OPTIONS:

PART#	CATALOG#	DESCRIPTION
INV04165	TSL-541-461	TRUPRO - STANDARD LADDER - 25.00" - 5 TREAD - 20.00" ABS - 1.50 OD x .120 WALL 316 SS
INV04166	TSL-541-141	TRUPRO - STANDARD LADDER - 25.00" - 5 TREAD - 20.00" ABS - 1.90 OD x .065 WALL 304 SS
INV04167	TSL-541-241	TRUPRO - STANDARD LADDER - 25.00" - 5 TREAD - 20.00" ABS - 1.90 OD x .109 WALL 304 SS
INV04168	TSL-542-461	TRUPRO - STANDARD LADDER - 27.00" - 5 TREAD - 20.00" ABS - 1.50 OD x .120 WALL 316 SS
INV04169	TSL-542-141	TRUPRO - STANDARD LADDER - 27.00" - 5 TREAD - 20.00" ABS - 1.90 OD x .065 WALL 304 SS
INV04170	TSL-542-241	TRUPRO - STANDARD LADDER - 27.00" - 5 TREAD - 20.00" ABS - 1.90 OD x .109 WALL 304 SS
INV04171	TSL-543-461	TRUPRO - STANDARD LADDER - 30.00" - 5 TREAD - 20.00" ABS - 1.50 OD x .120 WALL 316 SS
INV04172	TSL-543-141	TRUPRO - STANDARD LADDER - 30.00" - 5 TREAD - 20.00" ABS - 1.90 OD x .065 WALL 304 SS
INV04173	TSL-543-241	TRUPRO - STANDARD LADDER - 30.00" - 5 TREAD - 20.00" ABS - 1.90 OD x .109 WALL 304 SS
INV04174	TSL-544-461	TRUPRO - STANDARD LADDER - 36.00" - 5 TREAD - 20.00" ABS - 1.50 OD x .120 WALL 316 SS
INV04175	TSL-544-141	TRUPRO - STANDARD LADDER - 36.00" - 5 TREAD - 20.00" ABS - 1.90 OD x .065 WALL 304 SS
INV04176	TSL-544-241	TRUPRO - STANDARD LADDER - 36.00" - 5 TREAD - 20.00" ABS - 1.90 OD x .109 WALL 304 SS

TRUPRO - STANDARD LADDER - 5 TREAD

CATALOG NO. TSL-5XX-XXX

PART NO. SEE TABLE



9889 GARRYMORE LANE
MISSOULA, MT 59808
(406) 549-0769
FAX (406) 549-2602
www.AquaCreek.com

PROPRIETARY AND CONFIDENTIAL INFORMATION

THIS DRAWING AND ALL INFORMATION CONTAINED HEREIN IS THE SOLE PROPERTY OF AQUA CREEK PRODUCTS LLC. ANY REPRODUCTION IN PART OR AS A WHOLE WITHOUT WRITTEN PERMISSION FROM AQUA CREEK IS PROHIBITED.

*SPECIFICATIONS ARE SUBJECT TO CHANGE WITHOUT NOTICE

DIMENSIONS ARE IN INCHES
UNLESS OTHERWISE SHOWN
FRACTIONAL: ±1/4
ANGULAR: ±1°
TWO PLACE DECIMAL: ±.05
THREE PLACE DECIMAL: .. ±.005

MATERIAL: STAINLESS STEEL/ABS
FINISH: TBD
APPROX. WEIGHT: 42.34 LBS.