



**Aqua Creek Products**

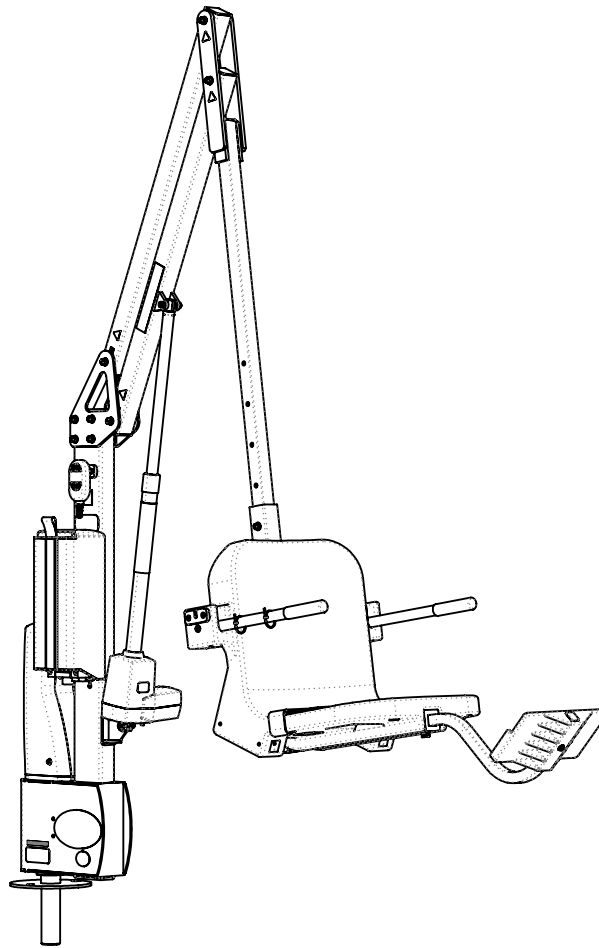
— Leaders in Recreation, Fitness and Ability —

USE THIS MANUAL FOR CATALOG #'s:

F-SCTXL / F-SCTXL-G / F-SCTXL-T / F-SCTXL-W / F-SCTXL-C / C-SCTXL-BYO

# INSTALLATION & OPERATION MANUAL

MODEL: SCOUT EXCEL



\* C-SCTXL-BYO, F-SCTXL-C MAY CONTAIN PLASTIC NOT APPROVED BY UL

RECORD YOUR LIFT'S  
SERIAL NUMBER HERE:

1

FOR INDOOR OR OUTDOOR USE

UPDATED:

4 - 11/18/2025

[WWW.AQUACREEK.COM](http://WWW.AQUACREEK.COM)

© 2024 AQUA CREEK PRODUCTS. ALL RIGHTS RESERVED.

9889 GARRYMORE LANE  
MISSOULA, MT 59808  
(406) 549-0769  
FAX (406) 549-2602

# TABLE OF CONTENTS

SAFETY INFORMATION.....	3
ADA REQUIREMENTS FOR POOL LIFTS (US ONLY).....	4
PRODUCT OVERVIEW AND APPLICATIONS.....	5
COMPATIBLE ANCHORING OPTIONS .....	5
UNPACKING YOUR LIFT .....	5
PRODUCT COMPONENTS.....	6
PRODUCT ASSEMBLY.....	14
OPERATION INSTRUCTIONS.....	20
MAINTENANCE INSTRUCTIONS.....	21
ANNUAL INSPECTION.....	22
BASIC TROUBLESHOOTING.....	26
WARRANTY INFORMATION.....	27



## IMPORTANT SAFETY INFORMATION



### SAVE THESE INSTRUCTIONS

### READ ALL INSTRUCTIONS BEFORE USING

**WARNING** - To reduce the risk of injury, do not permit children to use this product unless they are closely supervised at all times.

This appliance is not intended for use by persons (including children) with reduced physical, sensory or mental capabilities, or lack of experience and knowledge, unless they have been given supervision or instruction concerning the use of the appliance by a person responsible for their safety.

A wire connector is provided on this appliance to connect a minimum 8AWG (8.4mm<sup>2</sup>) solid copper conductor between this unit and the means of equipotential bonding.

Check appliance periodically for signs of deterioration: Keep all nuts, bolts and screws tight to be sure the lift is in safe working condition.

Affix the supplied "ADA POOL/SPA LIFT" sign in a location visible from the appliance at all times.

Rechargeable batteries are to be removed from the appliance before being charged. Batteries are to be installed with the correct polarity. If the appliance is to be stored unused for a long period of time, the batteries should be removed and stored on the wall mounted charger to maintain the battery charge. The supply terminals are NOT to be short-circuited.

### REDUCE THE RISK OF DROWNING

- Never swim alone.
- Never use the appliance to enter an empty pool.
- Never apply direct water pressure to the electronics.
- Never permit children to play on or around this appliance.
- Supervise children at all times.

DO NOT jump or dive from this appliance.

Seat may be hot, use caution when entering.

Keep appliance covered when not in use. Inspect and clean before use.

### READ CAREFULLY

Check the entire box and all packing materials for parts. Before beginning assembly, read the instructions and identify parts using the figures and parts listed in this document. It is critical that all parts be carefully inspected prior to installation. If any damage occurred in transit, Aqua Creek Products LLC must be notified within three (3) days of receipt. Proper installation cannot be over-stressed, as an improper installation will void Aqua Creek's warranty and may affect the safety of the user.

## ADA REQUIREMENTS FOR POOL LIFTS\* (US ONLY)

### 1009.2.1 Pool Lift Location

Pool lift shall be located where the water level does not exceed 48". If entire pool water level exceeds 48", place pool lift where convenient.

### 1009.2.2 Seat Location

In the raised position, the centerline of the seat shall be located over the deck a minimum of 16" from the edge of the pool.

### 1009.2.3 Clear Deck Space

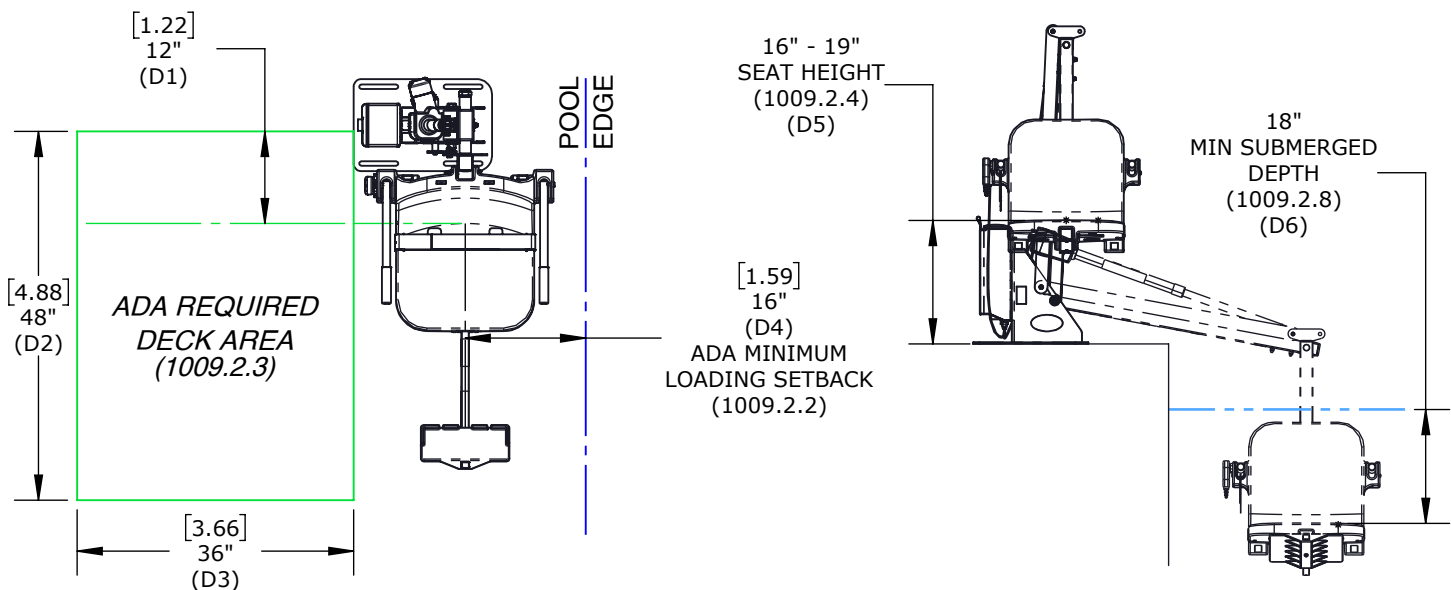
On the side of the seat opposite the water; a clear deck space shall be provided parallel with the seat. The space shall be 36" wide minimum and shall extend forward 48" minimum from a line located 12" behind the rear edge of the seat.

### 1009.2.4 Seat Height

The lift shall stop at 16" - 19" measured from the deck to the top of the seat surface when in the loading position.

### 1009.2.8 Submerged Depth

The lift shall submerge the seat a minimum of 18" below the stationary water level



\*Compliance with ADA is the responsibility of the pool owner. Visit [www.ada.gov](http://www.ada.gov) for complete guidelines.

## PRODUCT OVERVIEW AND APPLICATIONS

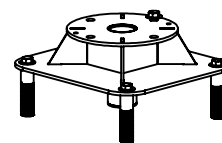
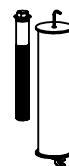
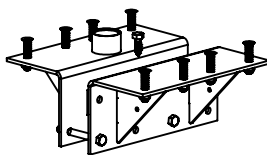
The Scout Excel pool lift is ideal for in-ground and partially raised pools or spas. The rotational base gives you a wide setback range from 7"-44" to install the lift further back from the edge of your pool in order to accommodate wider perimeter gutters and/or spa benches.

When combined with the adjustable seat height and a full 360° rotation in either direction, the Scout Excel allows you to clear short curbs or walls up to 27" high or water drafts up to 10". Stainless steel framing with a durable powder coat provides a clean, sleek look to the Scout Excel.

## COMPATIBLE ANCHORING OPTIONS

The Scout Excel will work with the following anchors. Anchor must be installed before the lift installation can begin. All anchors are sold separately. Contact your dealer or visit our website at [www.aquacreek.com](http://www.aquacreek.com) for additional anchor options.

STANDARD ANCHOR OPTIONS				
DESCRIPTION	ANCHOR - 1.90"x6.00" - W/KIT (FG)	ANCHOR - WOOD DECK 1.90"x6.00"	ANCHOR - 1.90"x10.00" - W/KIT	ANCHOR - SEMI-RECESSED
CATALOG NO.	F-808SA	F-842WDA	F-808SA-10	F-77SSA
PART NO.	INV01494	INV01504	INV01495	INV01486



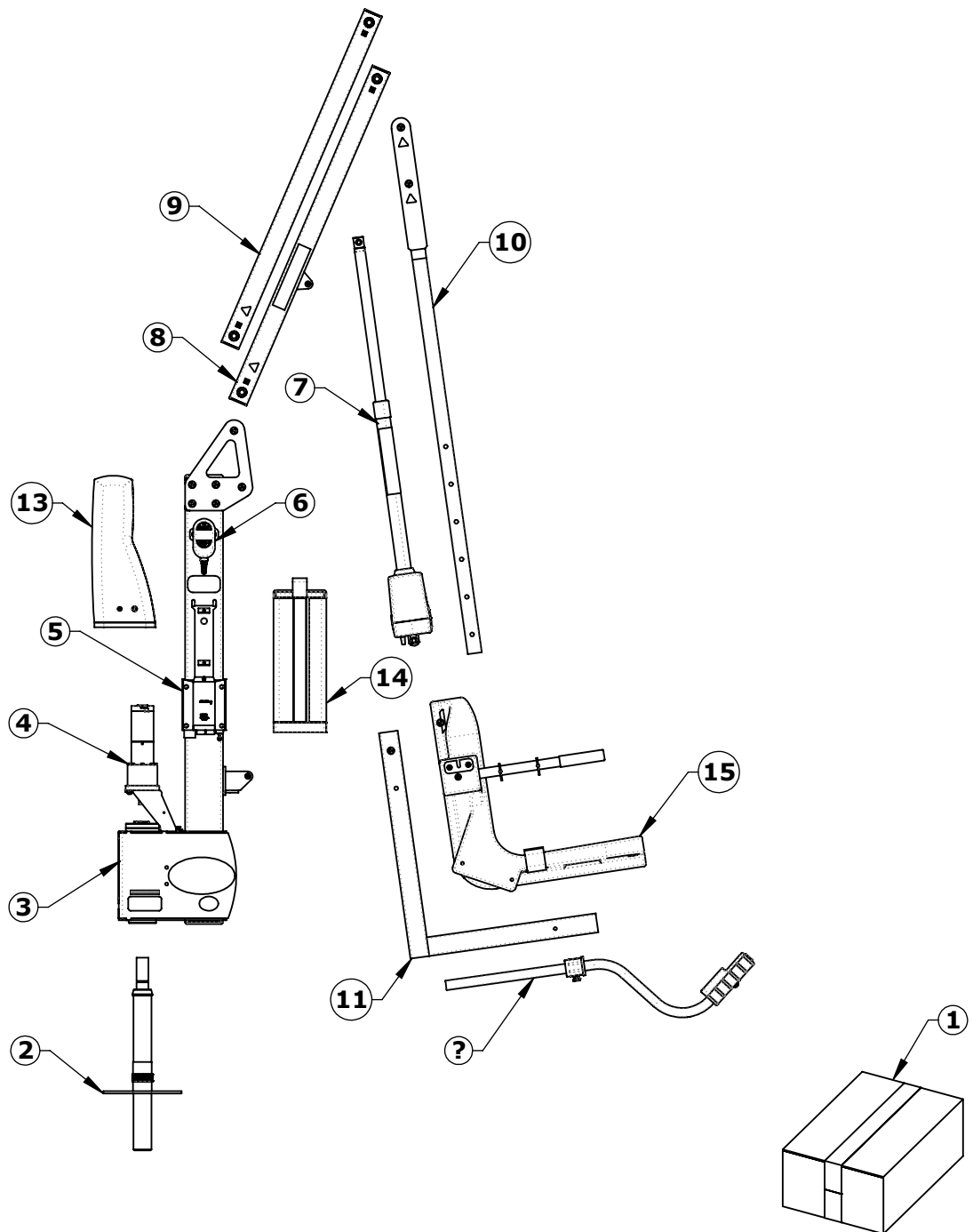
## UNPACKING YOUR LIFT

As you unpack your new lift, please inspect all parts for damage from shipping and handling as parts may have shifted in transit. Please refer to the following checklist to ensure all parts are accounted for before you begin your assembly.

# PRODUCT COMPONENTS

SCOUT EXCEL BLUE - F-SCTXL - INV02394 GRAY - F-SCTXL-G - INV02398 TAN - F-SCTXL-T - INV02397 WHITE - F-SCTXL-W - INV02399 CUSTOM COLOR - F-SCTXL-C - INV02400							
ITEM	PART NO.	BLUE	GRAY	TAN	WHITE	REV.	DESCRIPTION
1	INV03286	1	1	1	1	2	STOCK BOX - LINAK
2	INV03491	1	1	1	1	1	ASSEMBLY - ANCHOR SPINDLE - 1.90" DIA. SQ DRIVE
3	INV02753	1	1	1	1	3	ASSEMBLY - REV SERIES MAIN FRAME
4	INV02755	1	1	1	1	2	ASSEMBLY - MOTOR MOUNT
5	INV03561	1	1	1	1	1	ASSEMBLY - CONTROL BOX MOUNT - LINAK (ROTATIONAL)
6	INV01845	1	1	1	1	-	REMOTE - 4 BUTTON LINAK
7	INV03419	1	1	1	1	2	ACTUATOR KIT - 400MM - LINAK
8	INV01655	1	1	1	1	1	ASSEMBLY - LIFTING ARM - 38.00"
9	INV02006	1	1	1	1	1	ASSEMBLY - CONTROL ARM - 38.00"
10	INV02752	1	1	1	1	1	ASSEMBLY - SEAT POLE - 57.00"
11	INV02756	1	1	1	1	1	ASSEMBLY - SEAT CRADLE
12	INV02396	1	1	1	1	1	LABEL SHEET - SCOUT EXCEL (375LBS.)
13	INV03502	1	-	-	-	1	ASSEMBLY - MOTOR COVER - BLUE
13	INV03503	-	1	-	1	1	ASSEMBLY - MOTOR COVER - GRAY
13	INV03504	-	-	1	-	1	ASSEMBLY - MOTOR COVER - TAN
14	INV03471	1	-	-	-	1	ASSEMBLY - COVER - BATTERY & CONTROL BOX - W/ SCREWS - LINAK & VITO (BLUE)
14	INV03473	-	1	-	1	1	ASSEMBLY - COVER - BATTERY & CONTROL BOX - W/ SCREWS - LINAK & VITO (GRAY)
14	INV03472	-	-	1	-	1	ASSEMBLY - COVER - BATTERY & CONTROL BOX - W/ SCREWS - LINAK & VITO (TAN)
15	INV01417	1	-	-	-	1	ASSEMBLY - SEAT 18.00" - BLUE
15	INV02859	-	1	-	-	1	ASSEMBLY - SEAT 18.00" - GRAY
15	INV02860	-	-	1	-	1	ASSEMBLY - SEAT 18.00" - TAN
15	INV02861	-	-	-	1	1	ASSEMBLY - SEAT 18.00" - GRANITE WHITE
16	INV01903	1	-	-	-	1	ACCESSORY - FOOTREST - BLUE
16	INV01905	-	1	-	-	1	ACCESSORY - FOOTREST - GRAY
16	INV01904	-	-	1	-	1	ACCESSORY - FOOTREST - TAN
16	INV01906	-	-	-	1	1	ACCESSORY - FOOTREST - WHITE

# PRODUCT COMPONENTS

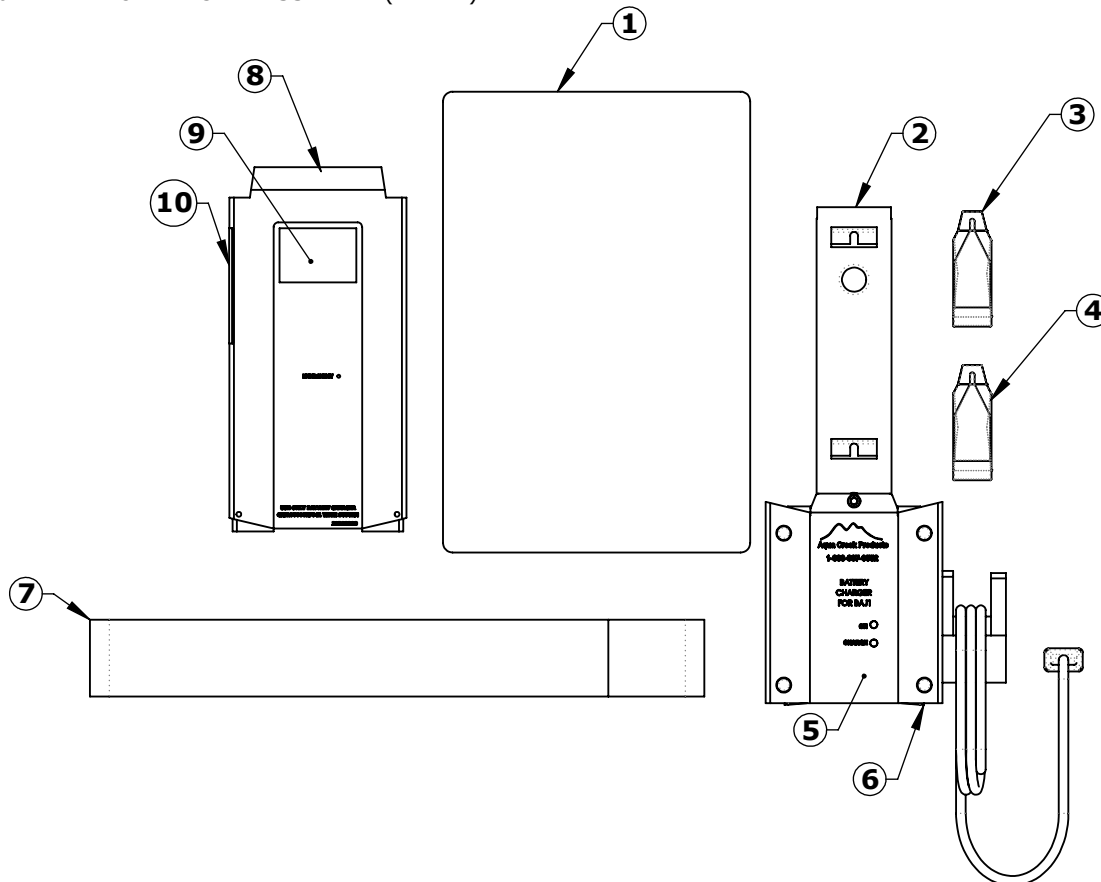


NOT SHOWN: 12

## COMPONENT DETAILS

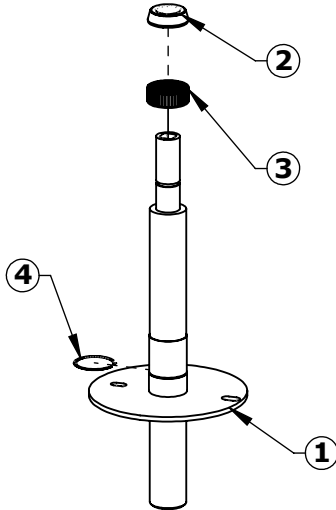
STOCK BOX - LINAK - INV03286					
ITEM	PART NO.	QTY.	REV.	DESCRIPTION	REORDER
1	INV00578	1	1	SIGN - "ADA LIFT AVAILABLE" (AQUA CREEK)	
2	INV03476	1	1	BRACKET - LINAK MOUNT (WALL)	
3	INV00249	1	-	DIELECTRIC GREASE PACKET - 6 GRAMS	
4	INV00303	1	-	ANTI-SEIZE - PACKET - 5 GRAMS	
5	INV00514	1	-	CHARGER - LINAK - 24V ACP	
6	INV00104	1	-	COVER - LINAK BOTTOM (JUMBO)	
7	INV00534	1	-	CHAIR - SEAT BELT	
8	INV00340	1	-	BATTERY - LINAK 24V - 2PC	
9	INV01804	1	-	LABEL #146 - DAILY CHARGE	
10	INV00646	1	-	LABEL #133 - PROP 65 (BATTERY)	
11	-	2	-	BSH - M5X8 SOCKET HEAD BOLT	
12	INV01172	2	-	WF - #10 FLAT WASHER	

\*11 & 12 PART OF BRACKET ASSEMBLY (ITEM 2)



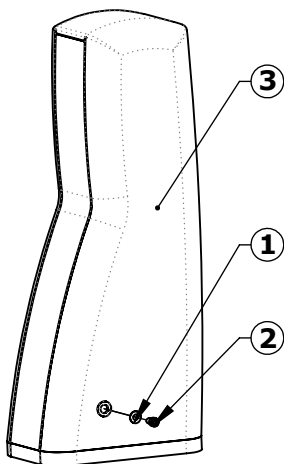
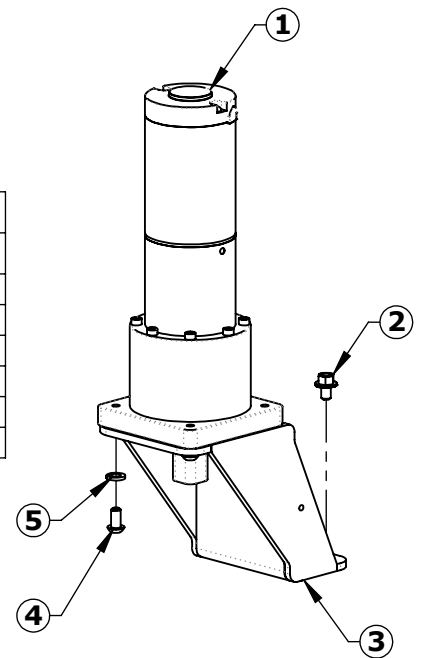


## COMPONENT DETAILS



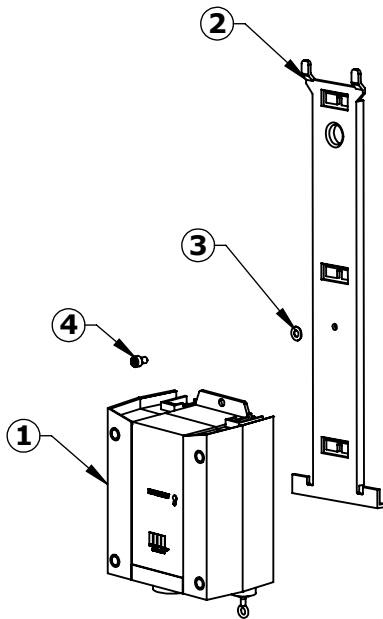
ASSEMBLY - ANCHOR SPINDLE - 1.90" DIA. SQ DRIVE - INV03491					
ITEM	PART NO.	QTY.	REV.	DESCRIPTION	REORDER
1	INV03490	1	1	WELDMENT - ANCHOR SPINDLE SQ DRIVE	
2	INV00378	1	-	ROLLER BEARING - 1.25"I.D. X 2.33"O.D. X 5/8"	
3	INV00617	1	-	NEEDLE BEARING - K50MMX55MMX20MM	
4	INV01834	1	-	RETAINING RING - EXTERNAL (SPIRAL)	

ASSEMBLY - MOTOR MOUNT - INV02755					
ITEM	PART NO.	QTY.	REV.	DESCRIPTION	REORDER
1	INV03462	1	1	PART - ROTATIONAL MOTOR - SQUARE DRIVE- 24VDC	
2	INV00428	4	-	BOLT - BHW 1/4"-20X3/8" SERRATED	
3	INV02083	1	1	WELDMENT - MOTOR MOUNT	
4	INV00345	4	-	BB - 1/4"-20X1/2" BUTTON HEAD BOLT	
5	INV01182	4	-	WL - 1/4" LOCK WASHER	
6	INV03686	1	-	1/4" BLACK SHRINK WRAP TUBING	

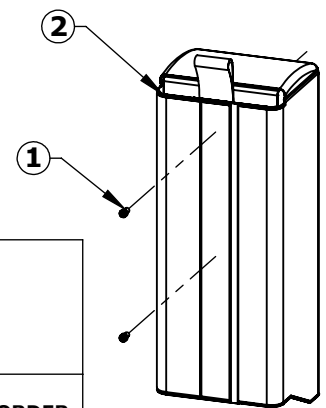


ASSEMBLY - MOTOR COVER BLUE - INV03502 GRAY - INV03503 TAN - INV03504							
ITEM	PART NO.	BLUE	GRAY	TAN	REV.	DESCRIPTION	REORDER
1	INV01172	2	2	2	-	WF - #10 FLAT WASHER	
2	INV00471	2	2	2	-	BSH - #10-24X3/8" SOCKET HEAD BOLT	
3	INV01747	1	-	-	1	COVER - MOTOR - BLUE	
3	INV01839	-	1	-	1	COVER - MOTOR - GRAY	
3	INV01838	-	-	1	1	COVER - MOTOR - TAN	

## COMPONENT DETAILS



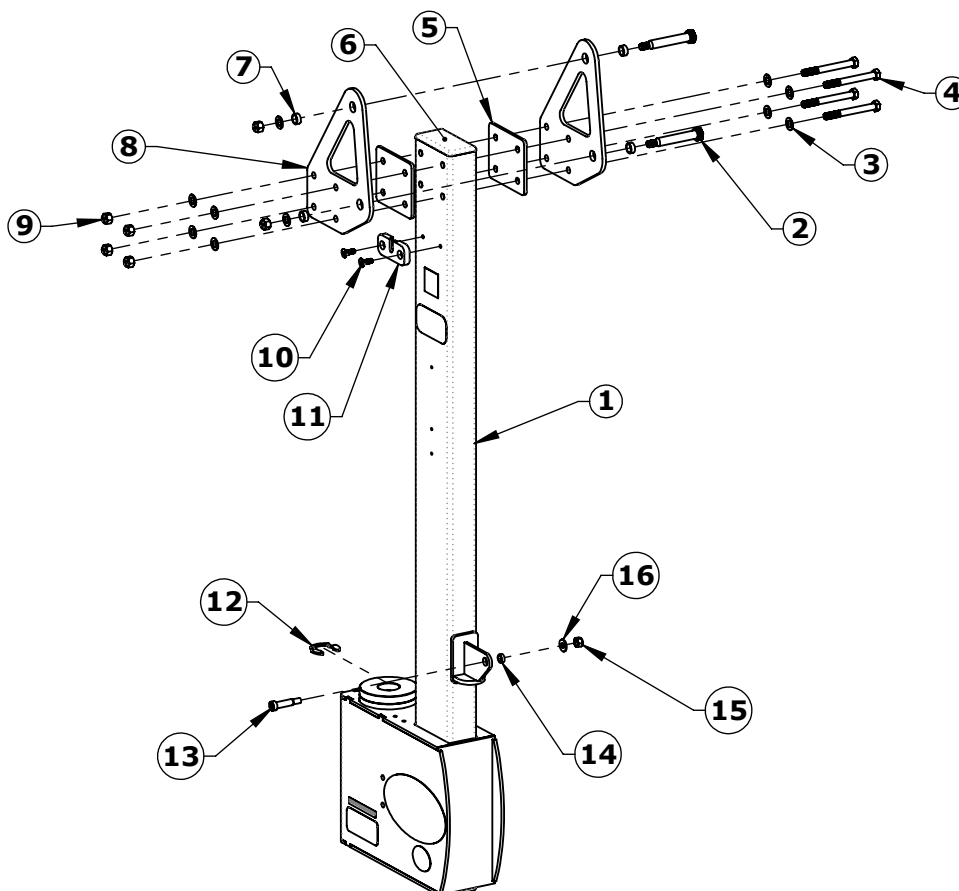
ASSEMBLY - LINAK CONTROL MOUNT (ROTATIONAL) - INV03561					
ITEM	PART NO.	QTY.	REV.	DESCRIPTION	REORDER
1	INV03475	1	1	BRACKET - LINAK MOUNT	
2	INV01172	1	-	WF - #10 FLAT WASHER	
3	INV00715	1	1	WASHER (PART OF LINAK - BRACKET KIT)	
4	INV00715	1	1	SCREW (PART OF LINAK - BRACKET KIT)	



ASSEMBLY - BATTERY & CONTROL BOX COVER BLUE - INV03471 GRAY - INV03473 TAN - INV03472							
ITEM	PART NO.	BLUE	GRAY	TAN	REV.	DESCRIPTION	REORDER
1	INV00471	2	2	2	-	BSH - #10-24X3/8" SOCKET HEAD BOLT	
2	INV00588	1	-	-	1	COVER - BATTERY & CONTROL BOX - LINAK & VITO - BLUE	
3	INV00589	-	1	-	1	COVER - BATTERY & CONTROL BOX - LINAK & VITO - GRAY	
4	INV00590	-	-	1	1	COVER - BATTERY & CONTROL BOX - LINAK & VITO - TAN	

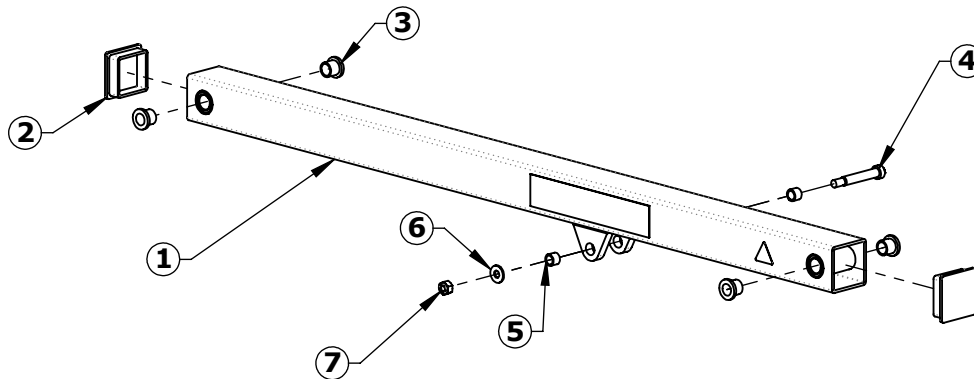
# COMPONENT DETAILS

ASSEMBLY - REV SERIES MAIN FRAME - INV02753					
ITEM	PART NO.	QTY.	REV.	DESCRIPTION	REORDER
1	INV02395	1	3	WELDMENT - REV SERIES MAIN FRAME	
2	INV00455	2	-	BS - 1/2"X2 3/4"X3/8"-16 SHOULDER BOLT	
3	INV01174	10	-	WF - 3/8" FLAT WASHER	
4	INV00411	4	-	BH - 3/8"-16X3 1/2" HEX HEAD BOLT	
5	INV00987	2	1	LASER/WJ - LIFTING EAR SPACER	
6	INV00980	2	-	END CAP - RECT. 2.00"X4.00"X.120"	
7	INV00450	4	-	BRB - 1/2"X5/8"X1/4" BRONZE BUSHING	
8	INV00986	2	1	LASER/WJ - LIFTING EAR	
9	INV00739	6	-	NN - 3/8"-16 NYLOCK NUT	
10	INV00362	2	-	BC - 1/4"-20X3/4" - FLAT HEAD COUNTERSINK	
11	INV00783	1	1	REMOTE HOLDER	
12	INV01835	1	-	RETAINING RING - 1-1/4" OD EXTERNAL	
13	INV00461	1	-	BS - 3/8"X1 1/4"X5/16"-18 SHOULDER BOLT	
14	INV00439	1	-	BRB - 3/8"X1/2"X3/16" - BRONZE BUSHING	
15	INV00742	1	-	NN - 5/16"-18 NYLOCK NUT	
16	INV01176	1	-	WF - 5/16" FLAT WASHER	

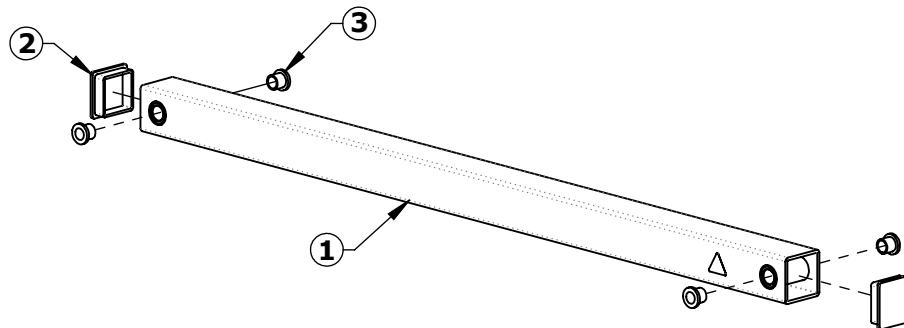


## COMPONENT DETAILS

ASSEMBLY - LIFTING ARM - 38.00" - INV01655					
ITEM	PART NO.	QTY.	REV.	DESCRIPTION	REORDER
1	INV02132	1	1	WELDMENT - LIFTING ARM - 38.00"	
2	INV01082	2	-	END CAP - SQR. 2.00"X.120"	
3	INV00441	4	-	BRB - 1/2"X5/8"X5/8"X1/8" BRONZE BUSHING	
4	INV00464	1	-	BS - 3/8"X2"X5/16"-18 SHOULDER BOLT	
5	INV00448	2	-	BRB - 1/2"X3/8"X3/8" BRONZE BUSHING	
6	INV01176	1	-	WF - 5/16" FLAT WASHER	
7	INV00742	1	-	NN - 5/16"-18 NYLOCK NUT	



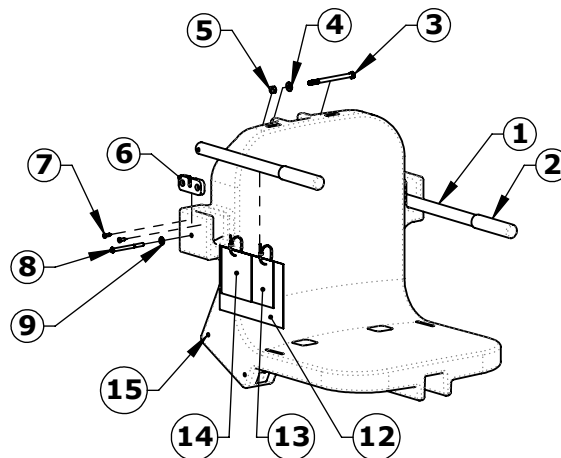
ASSEMBLY - CONTROL ARM - 38.00" - INV02006					
ITEM	PART NO.	QTY.	REV.	DESCRIPTION	REORDER
1	INV02131	1	1	WELDMENT - CONTROL ARM - 38.00"	
2	INV01082	2	-	END CAP - SQR. 2.00"X.120"	
3	INV00441	4	-	BRB - 1/2"X5/8"X5/8"X1/8" BRONZE BUSHING	



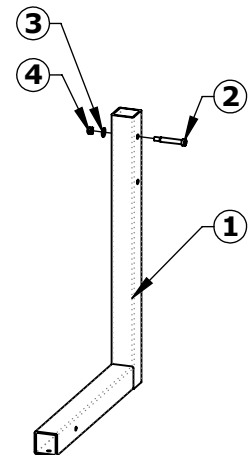
## COMPONENT DETAILS

ASSEMBLY - SEAT 18.00" BLUE - INV01417 GRAY - INV02859 TAN - INV02859 WHITE - INV02861								
ITEM	PART NO.	BLUE	GRAY	TAN	WHITE	REV.	DESCRIPTION	REORDER
1	INV02227	2	2	2	2	1	MAKE - ARMREST TUBE	
2	INV01031	2	2	2	2	-	HAND GRIP - RUBBER 1.00" DIA.	
3	INV00421	1	1	1	1	-	BH - 5/16"-18X4 1/2" HEX HEAD BOLT	
4	INV01176	2	2	2	2	-	WF - 5/16" FLAT WASHER	
5	INV00742	1	1	1	1	-	NN - 5/16"-18 NYLOCK NUT	
6	INV00783	1	1	1	1	1	REMOTE HOLDER	
7	INV01057	2	2	2	2	-	SFH - #12X3/4" PHILLIPS HEAD SCREW	
8	INV00349	2	2	2	2	-	BB - 1/4"-20X3 1/4" BUTTON HEAD BOLT	
9	INV01170	4	4	4	4	-	WF - 1/4" FLAT WASHER	
10	INV03136	2	2	2	2	-	WF - 5/16" NYLON	
11	INV00735	2	2	2	2	-	NN - 1/4"-20 NYLOCK NUT	
12	INV00665	1	1	1	1	1	LABEL #75 - SAFETY CARD	
13	INV00670	1	1	1	1	1	LABEL #87 - PROPER CARE	
14	INV03378	1	1	1	1	1	LABEL #203 - ATTENTION: ADJUSTABLE SEAT WARNING TAG	
15	INV00819	1	-	-	-	1	ROTOMOLD - SEAT 18.00" - BLUE	
15	INV00825	-	1	-	-	1	ROTOMOLD - SEAT 18.00" - GRAY	
15	INV00826	-	-	1	-	1	ROTOMOLD - SEAT 18.00" - TAN	
15	INV00820	-	-	-	1	1	ROTOMOLD - SEAT 18.00" - GRANITE WHITE	

NOT SHOWN: **10** **11**

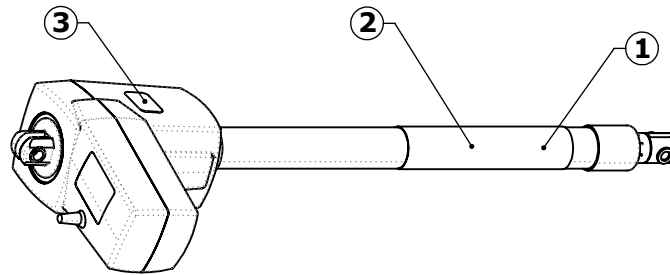


SCOUT EXCEL - INV02394					
ITEM	PART NO.	QTY.	REV.	DESCRIPTION	REORDER
1	INV01984	1	1	WELDMENT - SEAT CRADLE	
2	INV00464	1	-	BS - 3/8"X2"X5/16"-18 SHOULDER BOLT	
3	INV01176	1	-	WF - 5/16" FLAT WASHER	
4	INV00742	1	-	NN - 5/16"-18 NYLOCK NUT	

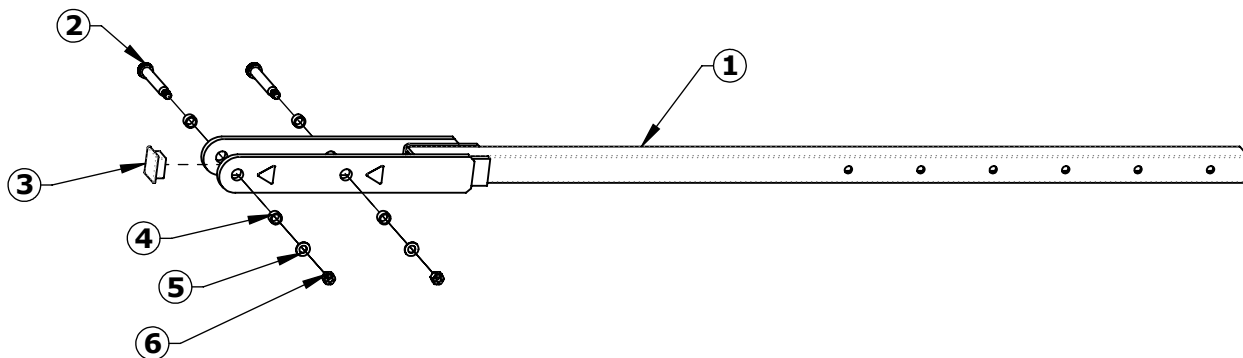


## COMPONENT DETAILS

ACTUATOR KIT - 400MM - LINAK - INV03419					
ITEM	PART NO.	QTY.	REV.	DESCRIPTION	REORDER
1	INV00239	1	-	ACTUATOR - LINAK - 400MM	
2	INV00657	1	1	LABEL #28 - DO NOT PUSH OR PULL	
3	INV00652	1	1	LABEL #139 - ACTUATOR	

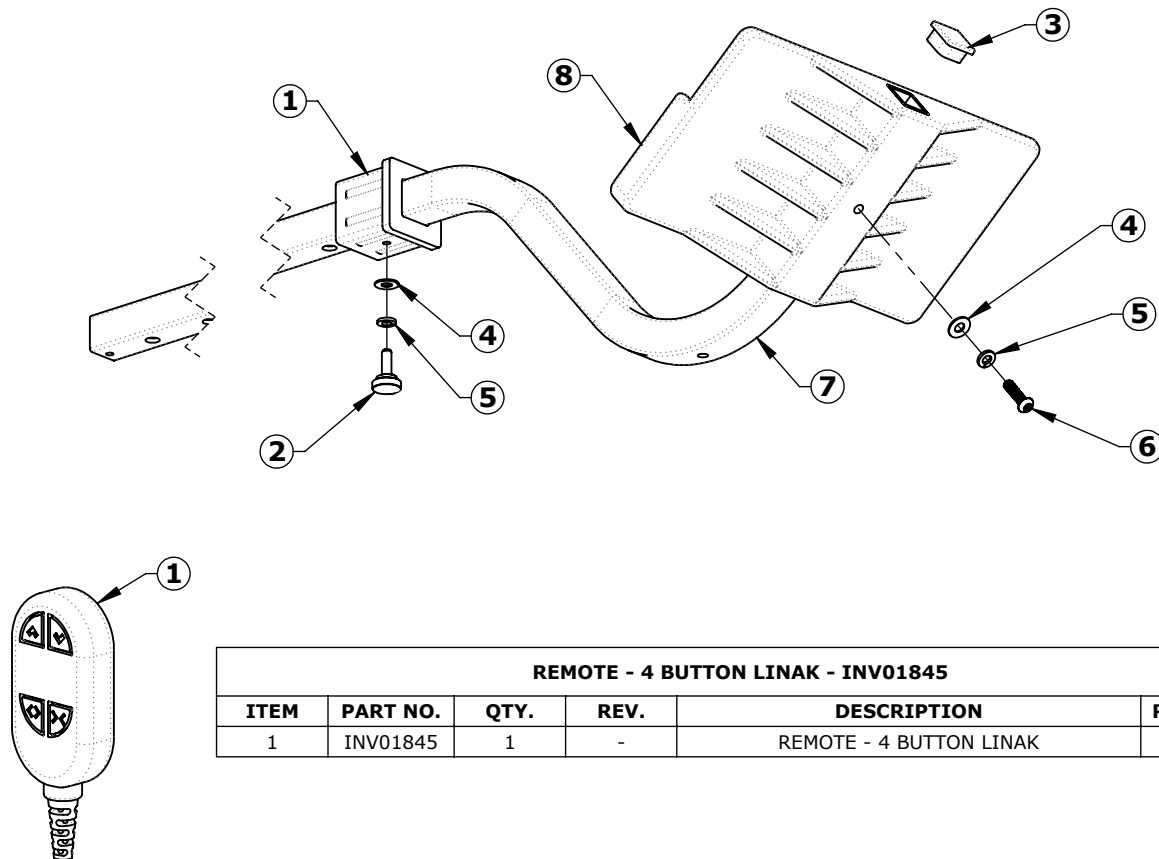


ASSEMBLY - SEAT POLE - 57.00" - INV02752					
ITEM	PART NO.	QTY.	REV.	DESCRIPTION	REORDER
1	INV02130	1	2	WELDMENT - SEAT POLE - 57.00"	
2	INV00458	2	-	BS - 1/2"X3"X3/8"-16 SHOULDER BOLT	
3	INV01080	1	-	END CAP - SQR. 1.50"X.120"	
4	INV00451	4	-	BRB - 1/2"X5/8"X3/8" BRONZE BUSHING	
5	INV01174	2	-	WF - 3/8" FLAT WASHER	
6	INV00739	2	-	NN - 3/8"-16 NYLOCK NUT	



## COMPONENT REVIEW

<b>ACCESSORY - FOOTREST</b> <b>BLUE - INV01903</b> <b>GRAY - INV01905</b> <b>TAN - INV01904</b> <b>WHITE - INV01906</b>								
ITEM	PART NO.	BLUE	GRAY	TAN	WHITE	REV.	DESCRIPTION	REORDER
1	INV01578	1	1	1	1	1	PART - LEG/FOOTREST INSERT	
2	INV02364	1	1	1	1	-	KNOB - 3/4" KNURLED - 1/4-20 X 3/4"	
3	INV01078	1	1	1	1	-	END CAP - SQR. 1.00"X.120"	
4	INV01170	2	2	2	2	-	WF - 1/4" FLAT WASHER	
5	INV01182	2	2	2	2	-	WL - 1/4" LOCK WASHER	
6	INV00341	1	1	1	1	-	BOLT - BHSCS 1/4"-20X1"	
7	INV02465	1	1	1	1	2	BEND - FOOTREST W/HOLES	
8	INV01894	1	-	-	-	1	PART - LEG/FOOTREST - BLUE	
8	INV01897	-	1	-	-	1	PART - LEG/FOOTREST - GRAY	
8	INV01895	-	-	1	-	1	PART - LEG/FOOTREST - TAN	
8	INV01896	-	-	-	1	1	PART - LEG/FOOTREST - WHITE	



REMOTE - 4 BUTTON LINAK - INV01845					
ITEM	PART NO.	QTY.	REV.	DESCRIPTION	REORDER
1	INV01845	1	-	REMOTE - 4 BUTTON LINAK	

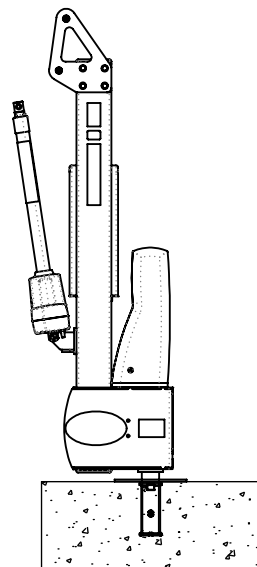
# PRODUCT ASSEMBLY

- **READ ALL INSTRUCTIONS FULLY AND USE ALL COMPONENTS SHOWN IN EACH STEP BEFORE MOVING ON TO THE NEXT STEP**
- **ADD A SMALL AMOUNT OF ASSEMBLY LUBE TO ALL THREADS DURING ASSEMBLY (PACKET PROVIDED). THIS WILL HELP PREVENT SEIZING OF BOLTS**
- **DO NOT OVER TIGHTEN BOLTS. OVER-TIGHTENING CAN CAUSE DAMAGE AND COMPROMISE THE SAFETY OF YOUR LIFT.**
- **TOOLS REQUIRED:**

SOCKETS/WRENCHES	ALLEN KEYS/TORX	RUBBER Mallet (AS NEEDED)
1/2"	5/32"	
9/16"	3/16"	
	1/4"	
	T-30	

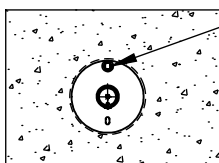
## STEP 1 INSTALL THE MAINFRAME

INSTALL THE MAINFRAME SUBASSEMBLY INTO THE PRE-INSTALLED ANCHOR (SEE ANCHOR MANUAL FOR INSTALLATION INSTRUCTIONS). LINE UP THE HOLE ON THE SPINDLE PLATE WITH THE FIX KIT ANCHOR AND SECURE THE BOLT. (SEE TOP VIEW BELOW). REMOVE ALL PACKAGING FROM THE LIFT. CAREFULLY LOWER THE ACTUATOR TO PREVENT IT FROM FALLING.



(Concrete with Anchor Example)

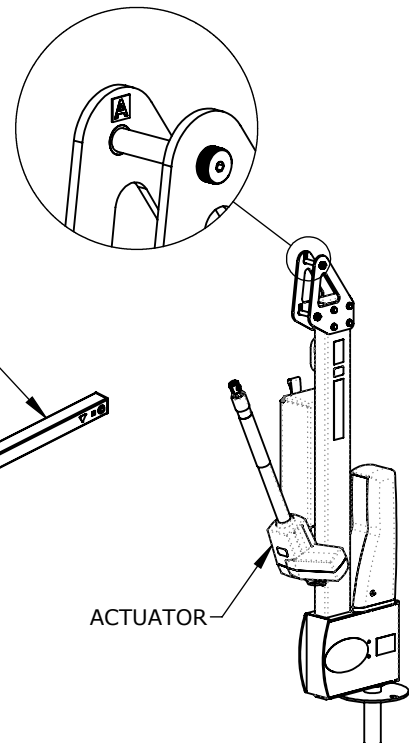
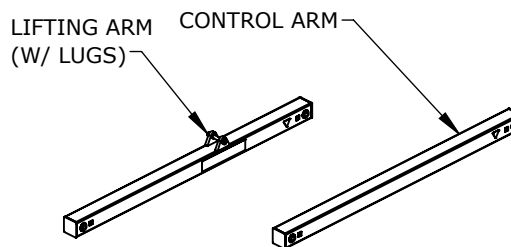
### TOP VIEW



BH - 1/2"-13X1 1/2" HEX HEAD BOLT  
PART NO. INV00388

## STEP 2 ARM INSTALLATION

MAKE SURE THE BUSHINGS ARE SECURE IN THE ARM ASSEMBLIES BEFORE BEGINNING NEXT STEPS. SEE STEPS 3 & 4 FOR LIFTING AND CONTROL ARM INSTALLATION. TO ENSURE THE CORRECT ORIENTATION OF THE LIFTING ARMS, BE SURE TO MATCH THE TWO "A" STICKERS TOGETHER (STEP 4 - CONTROL ARM), AND THE TWO "B" STICKERS TOGETHER (STEP 3 - LIFTING ARM).



ACTUATOR

**\*NOTE: DO NOT OVER TIGHTEN BOLTS. OVER-TIGHTENING CAN CAUSE DAMAGE AND COMPROMISE THE SAFETY OF YOUR LIFT.**

**\*USE ASSEMBLY LUBE  
ON ALL BOLTS**

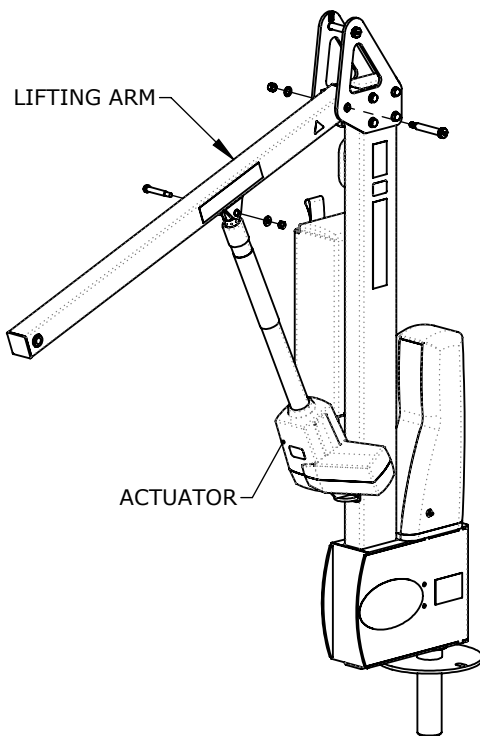


# PRODUCT ASSEMBLY

## **STEP 3**

### **ATTACH THE LIFTING ARM**

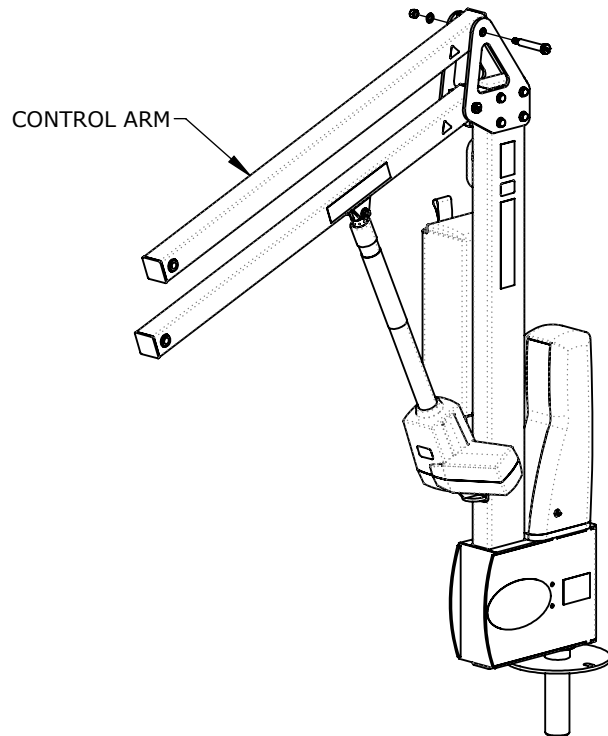
ATTACH THE LIFTING ARM TO THE MAINFRAME, AND THE ACTUATOR TO THE LIFTING ARM AS SHOWN BELOW. BE SURE TO MATCH UP THE "B" STICKERS ON THE ARMS WITH THE "B" STICKERS ON THE MAINFRAME ATTACHMENT POINT. USE THE HARDWARE IN ITS PRE-INSTALLED LOCATION. TIGHTEN NYLOCK NUTS TO SECURE.



## **STEP 4**

### **ATTACH THE CONTROL ARM**

ATTACH THE CONTROL ARM TO THE MAINFRAME USING THE HARDWARE IN ITS PRE-INSTALLED LOCATION, MATCHING THE "A" STICKERS TOGETHER. TO PREVENT SCRATCHING OR CHIPPING OF THE POWDER COAT FINISH, PLACE A CLEAN, SOFT CLOTH BETWEEN THE CONTROL AND LIFTING ARMS AT THE FURTHEST POINT FROM THE MAINFRAME.



**\*NOTE: DO NOT OVER TIGHTEN BOLTS. OVER-TIGHTENING CAN CAUSE DAMAGE AND COMPROMISE THE SAFETY OF YOUR LIFT.**

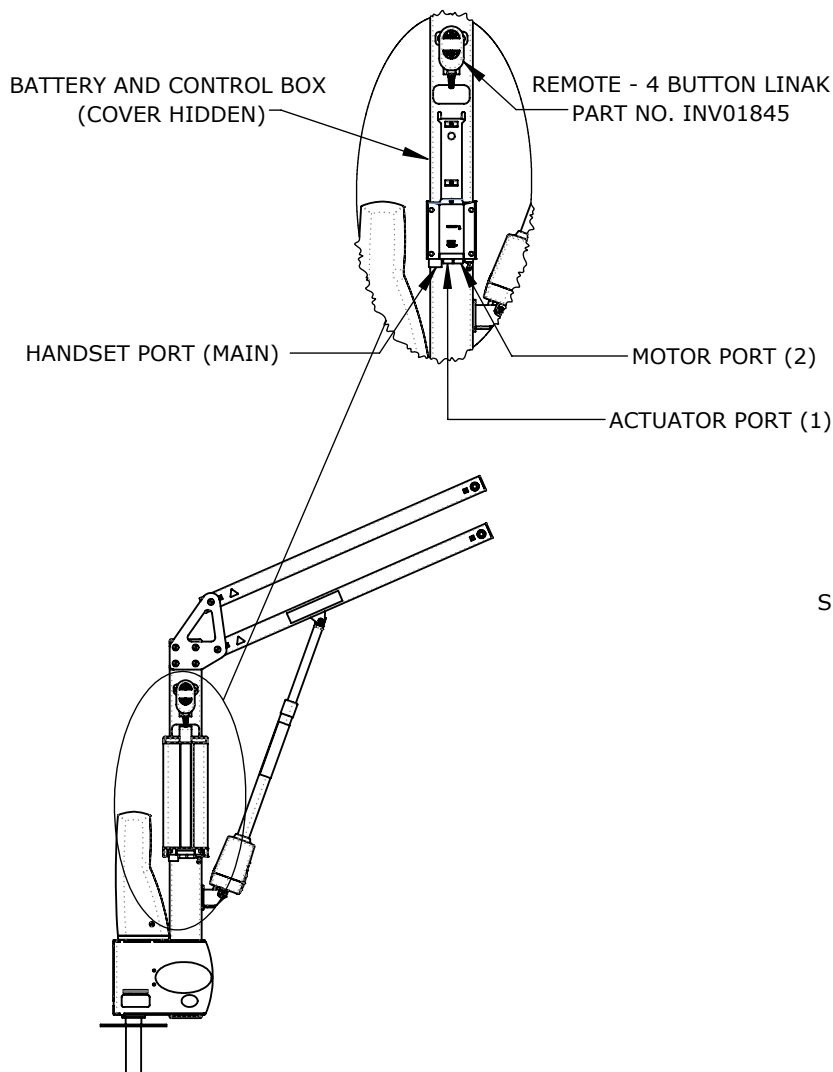
**\*USE ASSEMBLY LUBE ON ALL BOLTS**

# PRODUCT ASSEMBLY

## STEP 5

### ADJUST LIFT FOR NEXT STEPS

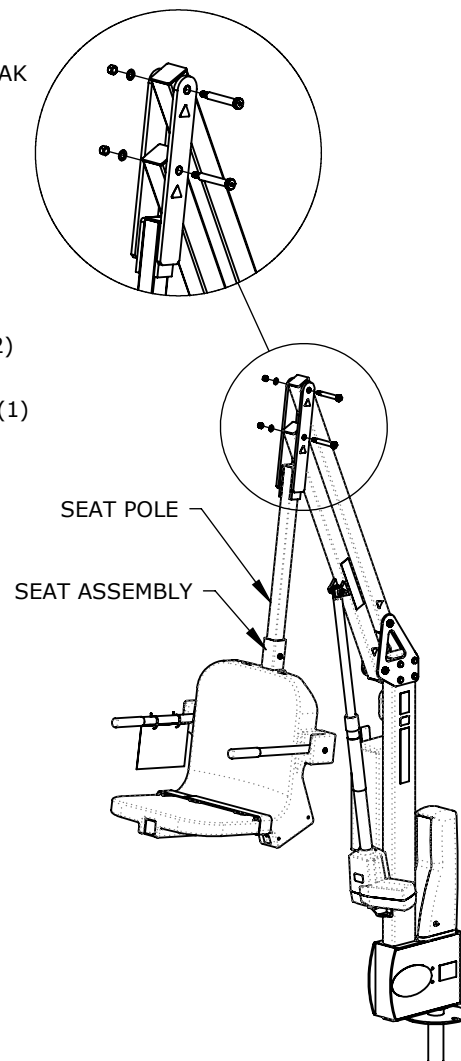
PLACE THE BATTERY ON THE CONTROL BOX, MAKING SURE IT SNAPS INTO PLACE. USE THE HANDSET TO RAISE THE LIFT SO THERE IS ENOUGH CLEARANCE TO ATTACH THE SEAT POLE AND SEAT CRADLE ASSEMBLIES IN THE NEXT STEPS. PLACE THE HANDSET ONTO ITS HOLSTER ON THE MAINFRAME AS SHOWN WHEN NOT IN USE.



## STEP 6

### CONNECT SEAT ASSEMBLY

CONNECT THE SEAT POLE TO THE LIFTING & CONTROL ARMS USING THE INCLUDED, PRE-INSTALLED HARDWARE. MAKE SURE THE BUSHINGS ARE SECURE IN EACH PART BEFORE CONNECTING THEM TOGETHER. SEE **STEP 7** FOR SEAT ADJUSTABILITY INSTRUCTIONS.



**\*NOTE: DO NOT OVER TIGHTEN BOLTS. OVER-TIGHTENING CAN CAUSE DAMAGE AND COMPROMISE THE SAFETY OF YOUR LIFT.**

**\*USE ASSEMBLY LUBE ON  
ALL BOLTS**

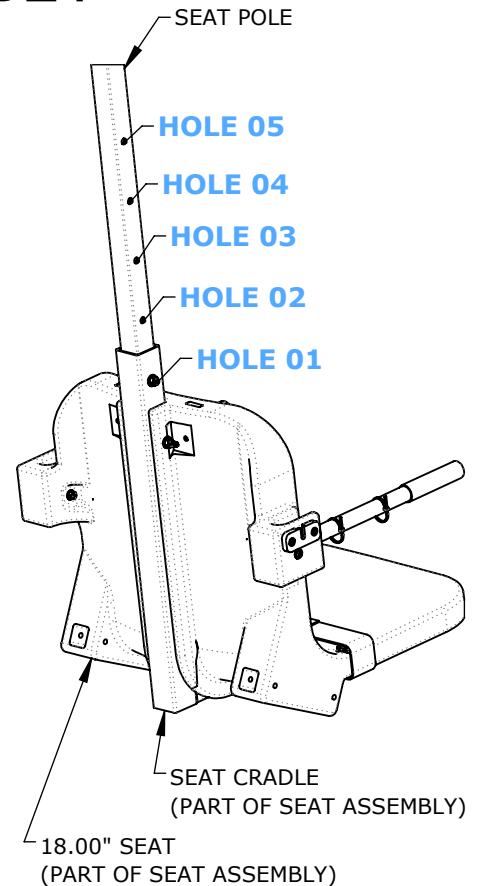
# PRODUCT ASSEMBLY

## STEP 7 ADJUST SEAT ASSEMBLY

THE SEAT ASSEMBLY WILL ARRIVE ATTACHED TO THE SEAT POLE ADJUSTED TO ITS HIGHEST POSITION (HOLE 05). TO ADJUST THE SEAT ASSEMBLY TO A LOWER POSITION, REMOVE THE FASTENERS CONNECTING THE SEAT ASSEMBLY TO THE SEAT POLE. SLIDE THE SEAT ASSEMBLY TO ITS DESIRED POSITION (4" INCREMENTS) AND REINSTALL THE FASTENERS. THE MAXIMUM ADJUSTMENT RANGE IS 16"

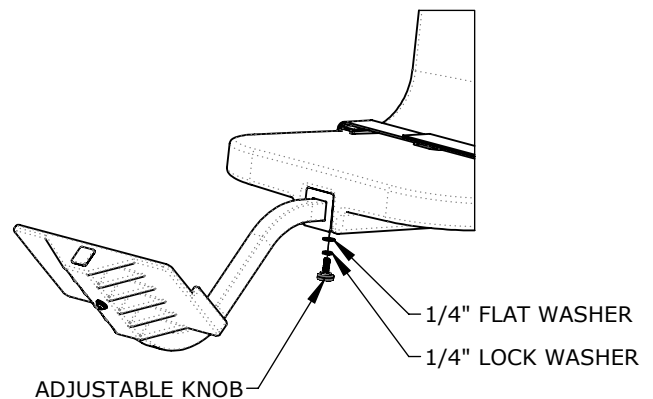
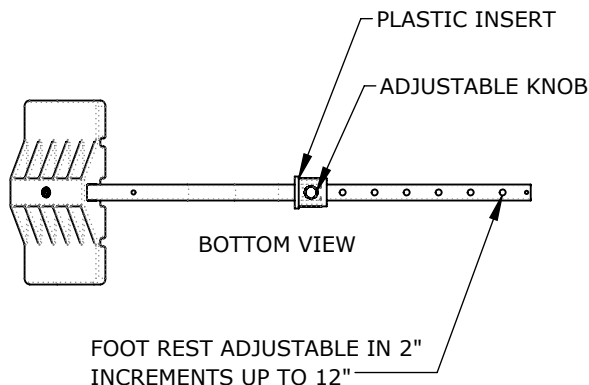
\*DO NOT ATTACH THE SEAT ASSEMBLY ANY LOWER THAN THE BOTTOM TWO HOLES. ALWAYS USE THE TWO (2) SUPPLIED BOLTS TO ATTACH THE SEAT ASSEMBLY TO THE SEAT POLE.

NOTE: FOR MOST APPLICATIONS THE SEAT WILL BE INSTALLED IN ITS LOWEST POSITION (HOLE 01). FOR APPLICATIONS WHERE A WALL OR CURB MUST BE CLEARED THE SEAT SHOULD BE INSTALLED IN A HIGHER POSITION.



## STEP 8 ATTACH FOOTREST

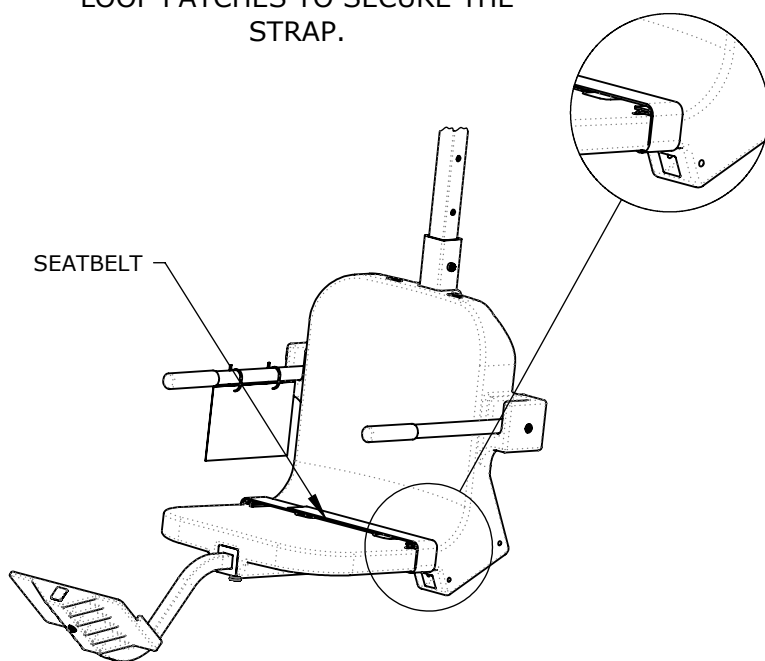
REMOVE THE ADJUSTMENT KNOB AND ACCOMPANYING WASHERS FROM THE PLASTIC INSERT ON THE FOOTREST TUBE. FIT THE PLASTIC INSERT INTO THE SEAT CRADLE TUBE BELOW THE SEAT WITH THE HOLE FACING DOWNWARDS (USE A RUBBER Mallet IF NECESSARY). INSERT THE FOOTREST TUBE INTO THE PLASTIC INSERT AND ADJUST THE FOOTREST TO THE DESIRED LENGTH BY LINING UP THE HOLES ON THE FOOTREST TUBE WITH THE HOLE ON THE BOTTOM OF THE SEAT CRADLE. INSERT THE ADJUSTMENT KNOB AND WASHERS INTO HOLE IN THE BOTTOM OF THE SEAT CRADLE AND TIGHTEN THE HARDWARE INTO PLACE.



# PRODUCT ASSEMBLY

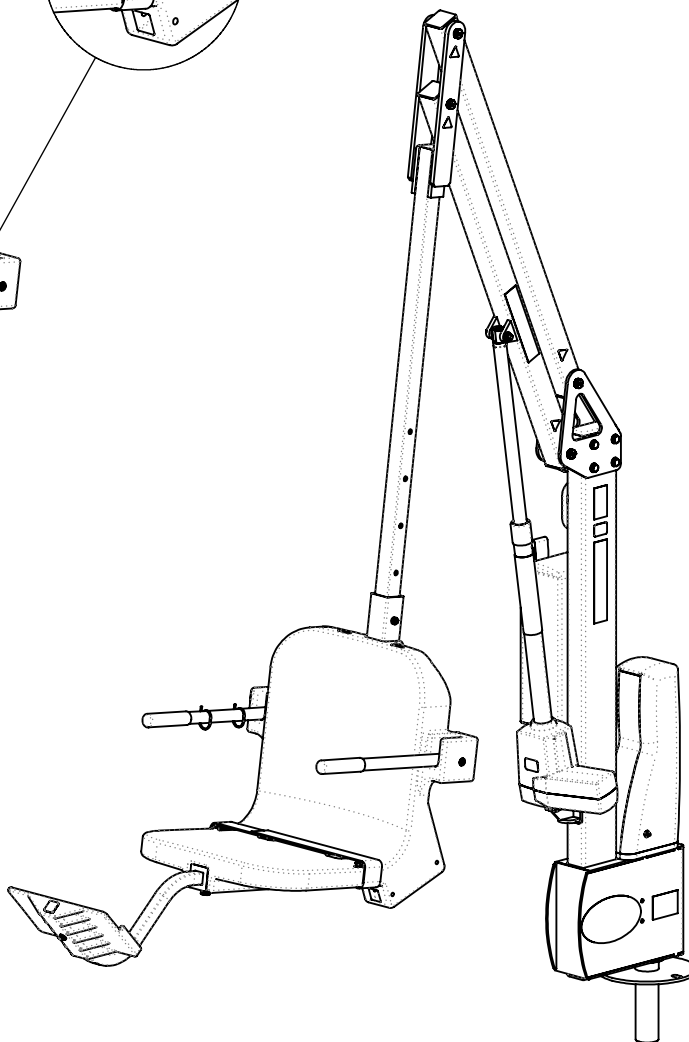
## **STEP 9** **ATTACH SEATBELT**

LOOP EACH SEATBELT STRAP THROUGH THE SLOT INDICATED BELOW AND USE THE HOOK AND LOOP PATCHES TO SECURE THE STRAP.



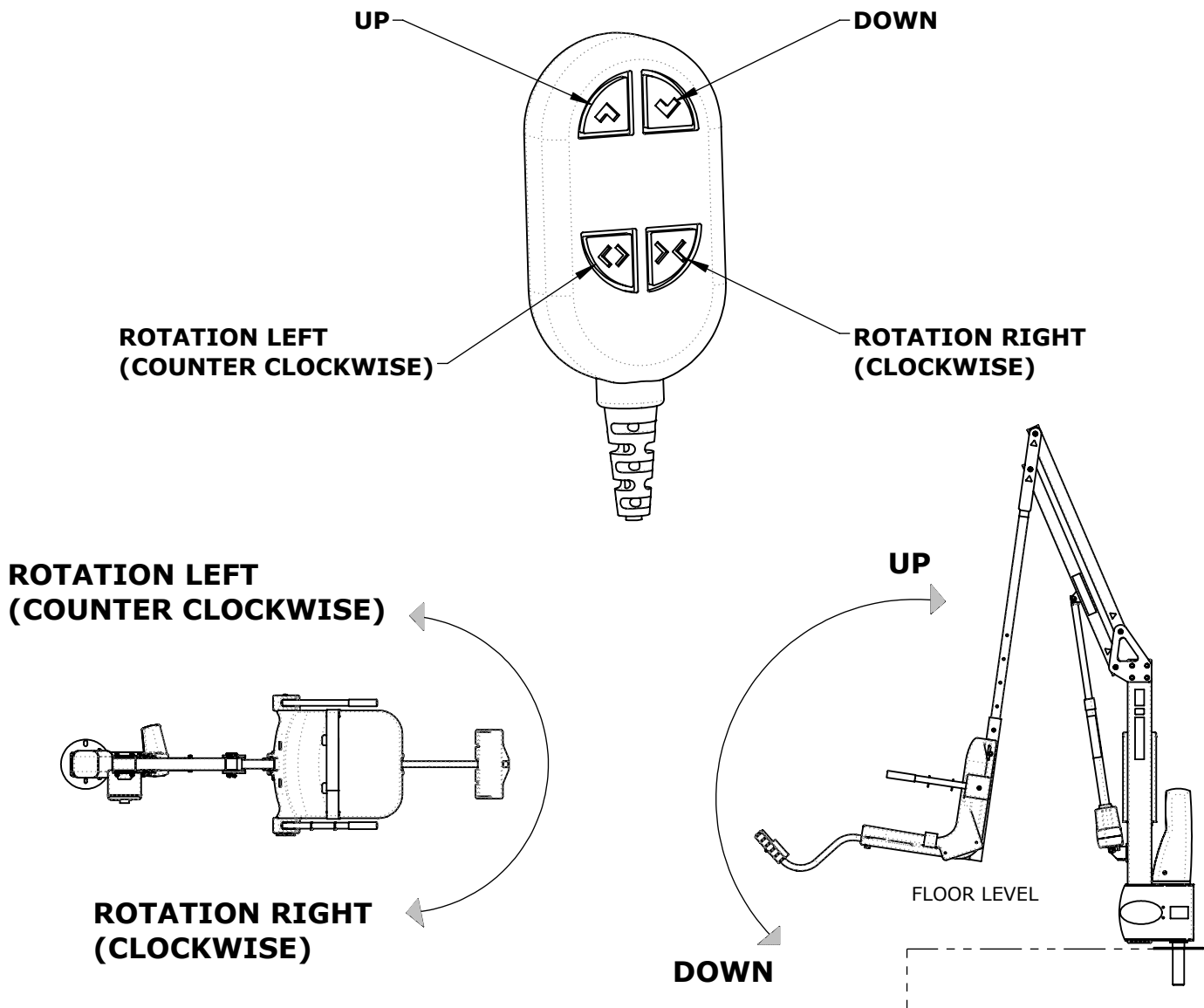
## **CONGRATULATIONS!**

PRODUCT ASSEMBLY IS COMPLETE!  
RINSE THE LIFT OFF WITH FRESH WATER  
AFTER ASSEMBLY IS COMPLETE TO  
REMOVE ANY GREASE LEFT OVER FROM  
ASSEMBLY PROCESS.



**\*USE ASSEMBLY LUBE ON  
ALL BOLTS**

# OPERATION INSTRUCTIONS



## MAINTENANCE INSTRUCTIONS

PROCEDURE	BEFORE EACH USE	DAILY	WEEKLY	MONTHLY
Check battery level indicator on control box.	✓			
Run the lift through a complete test cycle (fully extend actuator) to verify it is functioning properly.	✓			
Wash lift with fresh water and dry with clean, soft, non-abrasive cloth.		✓		
Recharge battery.		✓		
Visually inspect lift for damage, corrosion, and loose or missing hardware.		✓		
Check all contact points for damage and/or corrosion.			✓	
Clean all contact points, and apply dielectric grease as needed.			✓	
Thoroughly clean lift frame and apply a liberal coat of car wax to maintain the lift's finish.				✓
Check all Warning and Cautionary labels to make sure they are not faded or worn. Replace as needed.				✓

### PROPER CARE NOTES:

- Use only fresh water to wash your lift. Do not wash with pool water.
- Use only clean, soft, non-abrasive cloths on your lift.
- Do not store lift or electronics in pump room or near chemicals.
- Do not allow children to play on or around this lift.
- When cleaning the lift, do not spray water directly on control box or battery.
- The lift may need to be bonded according to local code requirements.
- If the lift is not used for extended periods, remove the battery from the lift and store it on the wall charger to maintain the batteries charge. The charger should be plugged in and in a climate controlled area.

### STAIN REMOVAL NOTES:

*To remove stubborn stains from finish, spray affected area with mild dish soap, rub briskly with a 3M Scotch Brite™ pad. Use white epoxy paint to touch up the finish. Apply wax to protect when dry.*

## ANNUAL LIFT INSPECTION

Test Date:	
Pool Lift Model:	
Serial Number:	
Inspected By:	

### Inspection Notes:

Please read and fill out all information carefully

Improper use and/or maintenance of pool lift can lead to actuator and/or other mechanical failures and possible personal injury. Please read and follow the product operators' manual and the instructions below.

NOTE: Completely cycle the lift without a load before each use to verify the lift is functioning properly.

- Product service life depends on the load characteristics, type and frequency of use, and the environment in which the product is being used. For example, persons not calmly sitting but falling down with their full body weight in the chair, or using the pool lift's chair as a diving platform can casue premature actuator failure and/or possible personal injury.
- Based on historical product service life analysis, Aqua Creek recommends replacing the actuator(s) and other electronic components after 5 years of service. Check component serial numbers and purchase records to verify the age of your components.
- A functional weight lifting force of a maximum of 100lbs. Must be periodically verified by applying a non-live load (without a person) through the entire operating cycle of the lift. This process is performed in order to verify the smooth operation. Make note of any unusual noises or sudden movements coming from the actuator(s) or other components. Note: In some lifts, a sudden quick movement at the beginning of the cycle is normal but should smooth out over the course of operation.
- Creating a side load on the actuator by pushing and/or pulling on the actuator, especially under load conditions, can casue damage to the actuator and or personal injury.
- Electronic components are designed to be plug-and-play type replacements. There is no need to access the internal mechanisms in these components. The actuator, battery, and all electronic components may only be disassembled by authorized factory-trained personnel. Disassembly of electronic components by improperly trained and unauthorized persons will void the warranty on those components.
- The operator of the pool lift should never allow the pool lift to hit any stationary object either vertically or horizontally while operating a pool lift, i.e. walls, ceiling, pool/spa bench, etc.
- For quick and accurate troubleshooting and inspections, we recommend having a voltmeter on hand as well as adequate test and replacement components for the unit.
- Remove the pool lift from service immediately if any unusual noise is heard coming from the actuator such as grinding, popping or sudden inconsistent movements.
- Immediately remove from service any lift that does not have 100% compliance with the inspection until the appropriate corrections have been made by a qualified person.

## ANNUAL VISUAL INSPECTION

Corrosion is common with anything in a swimming pool environment; even stainless steel. Proper and regular maintenance and cleaning will prevent most instances of corrosion. Replace any components that have corrosion caused pitting, cracking, thinning of the base metal, or other instances of corrosion that can't be eliminated and/or minimized through thorough cleaning. Refer to product manual for additional maintenance instructions. Make comments and/or recommendations in the notes area below each section.

INSPECTION ITEM	PASS	FAIL	N/A
1. Anchor bolts, concrete around anchors, etc... are in good condition. No cracks in concrete, missing hardware, and anchors are installed correctly.			
2. The fixing anchor is installed correctly and is in good condition.			
3. Powder coated components are clean, corrosion free, and in good overall condition. Clean and repair any missing powder coat finish. Apply a coat of wax on the cleaned and repaired finish.			
4. Welded joints show no signs of cracks or fatigue. Replace any non-compliant components.			
5. Hardware is present, secure, and not corroded (bolts, nuts, bushings, etc...).			
6. All wiring routing clips are present and in good condition.			
7. All product warning labels are present and legible.			
8. Plastic seat, foot rest, and other plastic components are present and in good condition.			
9. Armrest hand grips are present, in good condition, and are well secured to the arms.			
10. Electronic and lift covers are present and in good condition (Lift covers are highly recommended for outdoor installations).			
11. Inspect rotation gears for any damage or missing teeth. Inspect rotation motor gear and alignment to ensure proper rotation of the lift.			
12. Inspect lift slings, seat belts, and other similar stitched and webbed or weaved materials for damage, fatigue, and/or deterioration. Replace at first sign of any fatigue or damage.			



## ANNUAL PHYSICAL POOL LIFT TEST

A physical test of the lift's function is required when doing an annual inspection. The lift should always run through a completed cycle without a load prior to each use. Make comments and/or recommendations in the notes area below.

INSPECTION ITEM	PASS	FAIL	N/A
1. With all connections secured, operate the lift through a complete cycle with and without weight to confirm the lift is functioning properly. Note any strange noises or unusual behavior.			
2. Verify the lift was installed correctly. Is the lift free to travel in and out of the pool without hitting anything such as walls, rails, benches, etc.?			
3. Rotate lift at least 90 degrees over the water and back again if applicable.			

NOTES:

## ANNUAL ELECTRONICS INSPECTION

Most electronic issues are due to poor electrical connections and/or a defective battery. Always remove the battery and place on the charger when the lift is not in use. NOTE: Even if your lift is equipped with a solar charger, it is a good idea to place the battery on the wall charger periodically or during extended periods of non-use or storage. Before testing the battery, charge overnight. A voltage meter is required for this section and a known GOOD handset controller is helpful. An Aqua Creek electronics test light is also highly recommended (order item F-01TL). Make comments and/or recommendations in the notes area below each section.

INSPECTION ITEM	PASS	FAIL	N/A
1. Battery contact points are free of damage and/or corrosion. Dielectric grease is present on all contact points to prevent corrosion. ALWAYS STORE BATTERY ON THE CHARGER WHEN LIFT IS NOT IN USE!			
2. Battery level indicator (if equipped) on control box is functioning properly when battery is installed on lift.			
3. Using a voltmeter, check the voltage on the battery. A good battery will read between 24v and 28v DC. Note: Vito batteries will require a test cord. (F-VTC002)			
4. Using the test light, confirm continuity through the control box by plugging the light into the control box in place of the actuator and press the buttons on the controller and the control box itself (if applicable). If the light does not light up with the handset, replace handset with a known good one and try to see if it lights up.			
5. Once the battery is fully charged up to 24 to 28 volts, cycle the lift (up, down, rotate) counting the cycles. If the battery is in good condition, the lift should easily complete at least 15 cycles without a load.			

## BASIC TROUBLESHOOTING - LINAK

1. Make note of the complaint, such as lift is not operating at all, lift won't return to deck, etc...
2. Make note of any noises the lift may be making, such as grinding, clicking, buzzing, beeping. Try to identify where the noises are coming from, i.e. the actuator, battery control box, etc...
3. If a 'beeping' noise is coming from the battery, chances are the battery is dead or not charged enough to operate the lift. It is designed to have an audible alarm when it reaches below a certain charge level. Check the battery voltage (Should read >24 volts DC) and either charge the battery or replace it with a new one.
  - A. Lay the battery on a flat, dry surface.
  - B. Make sure your voltmeter is on and set to DC mode.
  - C. Put one probe on the left metal prong and one of the right metal prong.
  - D. The voltmeter should read 24 Volts or higher for a good battery. If it reads negative it just means the probes are on backwards.
  - E. Sometimes it will test good on voltage but the amperage is insufficient.
  - F. The battery can be taken to a battery store to have an 8 amp load test done to check for proper amperage.
4. If the battery just came off the charger and is fully charged, check to make sure the charger is plugged in and charging properly. This can be done with the voltmeter.
  - A. Verify the charger is plugged into a working wall outlet.
  - B. Place one probe from your voltmeter on the left metal prong on the charger and the other probe on the right metal prong of the charger. Voltage should be reading at least 27 volts DC. If it reads negative it just means the prongs were placed backwards.
5. Verify the cords are properly seated in the control box ports and are not damaged or corroded. We suggest unplugging and then plug back in to ensure they are seated properly. Clean any corrosion off of the battery tabs and cord plugs if there is any.
  - A. Remove any protective black or gray pieces and pull up gently on the metal tabs.

ONCE THESE STEPS ARE COMPLETE CALL AQUA CREEK PRODUCTS AND TALK TO TECHNICAL SUPPORT FOR FURTHER ASSISTANCE OR GO ONLINE AND WATCH OUR TROUBLESHOOTING VIDEOS:

(888)687-3552

[HTTPS://AQUACREEKPRODUCTS.COM/HELP-CENTER/TROUBLESHOOTING/](https://aquacreekproducts.com/help-center/troubleshooting/)





## LIMITED FIVE (5) YEAR WARRANTY

Aqua Creek Products, LLC (a.k.a. Aqua Creek) warrants to the original end user purchaser that products manufactured by Aqua Creek, when properly installed in accordance with assembly and installation instructions, and properly used and maintained, shall be free from defects in material and workmanship for a period of *five (5) years from the date of original purchase*, provided that Aqua Creek receives prompt notice in writing of any defect or failure and satisfactory proof thereof, with the following exception(s):

**Exceptions:**

All electrical components, including the linear actuator shall have the following warranty period:

Year 1-2: 100% Coverage

Year 3: 60% Coverage (Customer is responsible for 40% of replacement cost)

Year 4: 50% Coverage (Customer is responsible for 50% of replacement cost)

Year 5: 40% Coverage (Customer is responsible for 60% of replacement cost)

Hydraulic actuators and mesh slings shall have a warranty period of *one (1) year from the date of original purchase*.

Powder coat finish scratches, scrapes, corrosion, or dents from customers' normal use, negligence, or abuse are not covered.

This warranty specifically excludes reimbursement for labor to remove, repair, or install the product and any shipping charges. These warranties do not cover any damages due to accident, force majeure, act of nature, misuse, abuse, negligence or failure to properly maintain any products, or normal wear and tear from day to day operations. In the event that any products are altered, repaired, or improperly installed or improperly used by anyone without the prior written approval by Aqua Creek, all warranties are void. **IMPORTANT: AMOUNT OF WEIGHT PLACED ON LIFT SHALL NOT EXCEED THE RATED LIFTING CAPACITY FOR THE LIFT. NEVER OPERATE THE LIFT UNDER LOAD IN A DRY POOL (WITH NO WATER IN THE POOL).** It is the responsibility of the lift owner to verify the weight of the patron for warranty claim purposes and to ensure that the lift is not overloaded. Non-payment for product to Aqua Creek may void warranty.

To initiate a warranty claim, the owner of an Aqua Creek product must provide the place of purchase, in writing, with a full description of the product, its serial number, the dates of purchase and installation, and the exact nature of the defect. Within thirty (30) days after receipt of a written warranty claim by Aqua Creek, and barring any unforeseen delays, the place of purchase will be notified of Aqua Creek's decision regarding the claim.

If requested by Aqua Creek, any defective product must be returned, freight prepaid by customer, to Aqua Creek's designated factory location or duly appointed distributor for inspection and/or repair. Aqua Creek will, at its option, repair or replace the failed or defective item, and deliver the repaired product or replacement to the customer. All freight charges are the responsibility of the customer. Products returned to Aqua Creek for which Aqua Creek provides replacement under this limited warranty shall become the property of Aqua Creek. A new warranty period shall NOT be established for the repaired or replaced products. Such products shall remain under warranty only for the remainder of the original warranty period on the original products purchased.

This written limited warranty constitutes the final, complete and exclusive statement of warranty terms. No person or organization is authorized to make any other specific or implied warranties or representations on behalf of Aqua Creek.

THE WARRANTIES SET FORTH HEREIN ARE IN LIEU OF ALL OTHER WARRANTIES, EXPRESSED OR IMPLIED, WHICH ARE HEREBY DISCLAIMED AND EXCLUDED, INCLUDING WITHOUT LIMITATION ANY WARRANTY OF MERCHANTABILITY OR FITNESS FOR A PARTICULAR PURPOSE OR USE.

THE SOLE AND EXCLUSIVE REMEDIES FOR BREACH OF ANY AND ALL WARRANTIES WITH RESPECT TO THE PRODUCTS SHALL BE LIMITED TO REPAIR OR REPLACEMENT AT AQUA CREEK'S DESIGNATED FACTORY LOCATION, OR DULY APPOINTED DISTRIBUTOR, OR IN PLACE AT AQUA CREEK'S OPTION. IN NO EVENT SHALL AQUA CREEK'S LIABILITY EXCEED THE ENTIRE AMOUNT PAID TO AQUA CREEK BY THE ORIGINAL PURCHASER FOR THE FAILED OR DEFECTIVE PRODUCT. IN NO EVENT SHALL AQUA CREEK PRODUCTS, LLC BE LIABLE FOR ANY INCIDENTAL, CONSEQUENTIAL, SPECIAL, INDIRECT, PUNITIVE OR EXEMPLARY DAMAGES OR LOST PROFITS FROM ANY BREACH OF THIS LIMITED WARRANTY OR OTHERWISE.

THIS WARRANTY GIVES YOU SPECIFIC LEGAL RIGHTS AND YOU MAY ALSO HAVE OTHER RIGHTS, WHICH MAY VARY FROM STATE TO STATE. SOME STATES DO NOT ALLOW THE EXCLUSION OR LIMITATION OF INCIDENTAL, SPECIAL OR CONSEQUENTIAL DAMAGES, SO SOME OF THE ABOVE LIMITATIONS OR EXCLUSIONS MAY NOT APPLY TO YOU.