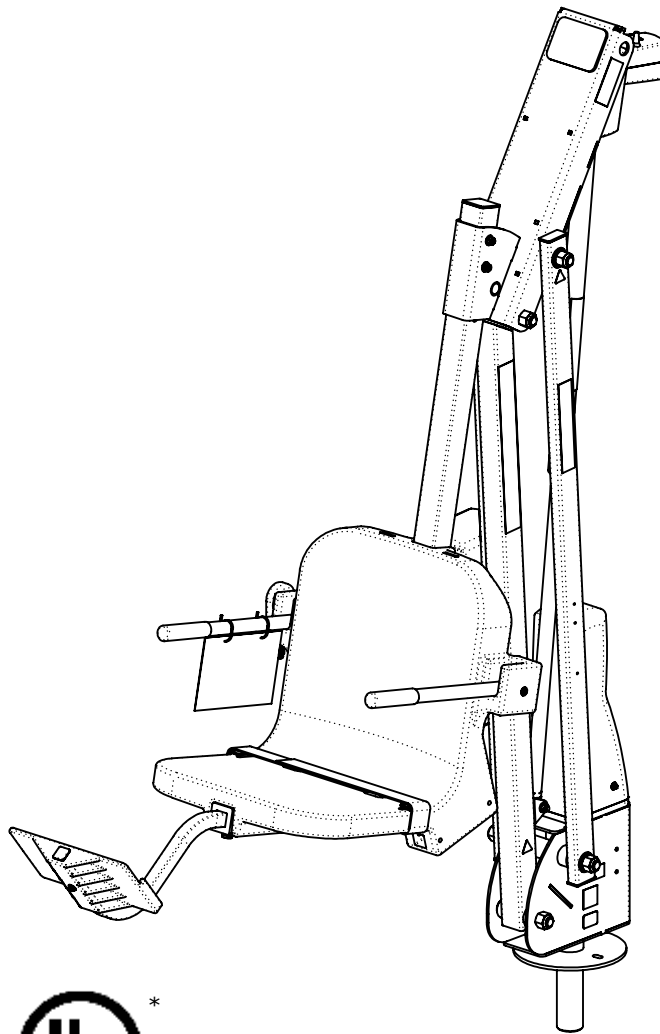




USE THIS MANUAL FOR CATALOG #'s:
F-MTY400 / F-MTY400-C / F-MTY400-G / F-MTY400-T / F-MTY400-W

INSTALLATION & OPERATION MANUAL

MODEL: MIGHTY 400
CATALOG #: F-MTY400



* C-SCTXL-BYO, F-SCTXL-C MAY CONTAIN PLASTIC NOT APPROVED BY UL

**RECORD YOUR LIFT'S
SERIAL NUMBER HERE:**

1

UPDATED:
5 - 1/16/2026

WWW.AQUACREEK.COM
© 2024 AQUA CREEK PRODUCTS. ALL RIGHTS RESERVED.

9889 GARRYMORE LANE
MISSOULA, MT 59808
(406) 549-0769
FAX (406) 549-2602

TABLE OF CONTENTS

| | |
|--|----|
| SAFETY INFORMATION..... | 3 |
| ADA REQUIREMENTS FOR POOL LIFTS (US ONLY)..... | 4 |
| PRODUCT OVERVIEW AND APPLICATIONS..... | 5 |
| COMPATIBLE ANCHORING OPTIONS | 5 |
| UNPACKING YOUR LIFT | 5 |
| PRODUCT COMPONENTS..... | 6 |
| COMPONENT DETAILS..... | 8 |
| PRODUCT ASSEMBLY..... | 14 |
| OPERATION INSTRUCTIONS..... | 17 |
| MAINTENANCE INSTRUCTIONS..... | 18 |
| ANNUAL INSPECTION..... | 19 |
| BASIC TROUBLESHOOTING..... | 23 |
| WARRANTY INFORMATION..... | 24 |



IMPORTANT SAFETY INFORMATION



Safety & Installation Instructions

When installing this product, always follow basic safety precautions, including the following:

READ ALL INSTRUCTIONS BEFORE USE

WARNING – To Reduce the Risk of Injury: Children and individuals with reduced physical, sensory, or mental capabilities, or those lacking experience or knowledge, should not use this product unless closely supervised or instructed by a responsible person.

Electrical Safety:

A wire connector is provided on all bondable anchors to connect a minimum 8 AWG (8.4 mm²) solid copper conductor to an equipotential bonding system as per NEC Article 680.82.

Maintenance & Inspection:

Periodically check the appliance for signs of wear or deterioration. Ensure all nuts, bolts, and screws are tightened to maintain safe operation.

Signage Requirement:

Affix the provided 'ADA POOL/SPA LIFT' sign in a position that maintains clear and unobstructed visibility from the lift at all times, in any location where ADA compliance is required.

Battery Safety:

Remove rechargeable batteries from the appliance before charging. Install batteries with the correct polarity. If the appliance will be unused for an extended period, remove the batteries and store them on the wall-mounted charger to maintain their charge. DO NOT short-circuit the supply terminals.

REDUCE THE RISK OF DROWNING:

- Never swim alone.
- Do not use the appliance to enter an empty pool.
- Do not spray water directly onto the electronics.
- Do not allow children to play on or around the appliance. Supervise children at all times.
- DO NOT jump or dive from this appliance.

Seat may become hot; use caution when sitting. Keep the appliance covered when not in use. Inspect and clean before each use.

READ CAREFULLY BEFORE INSTALLATION:

Inspect the entire box and packing materials for all necessary parts. Before assembly, carefully read the instructions and verify all parts using the provided diagrams and parts list. Inspect all components for damage before installation. If any damage occurred during shipping, notify Aqua Creek Products LLC within three (3) days of receipt. Proper installation is critical. Improper installation will void the Aqua Creek warranty and may compromise user safety.

ADA REQUIREMENTS FOR POOL LIFTS* (US ONLY)

1009.2.1 Pool Lift Location

Pool lift shall be located where the water level does not exceed 48". If entire pool water level exceeds 48", place pool lift where convenient.

1009.2.2 Seat Location

In the raised position, the centerline of the seat shall be located over the deck a minimum of 16" from the edge of the pool.

1009.2.3 Clear Deck Space

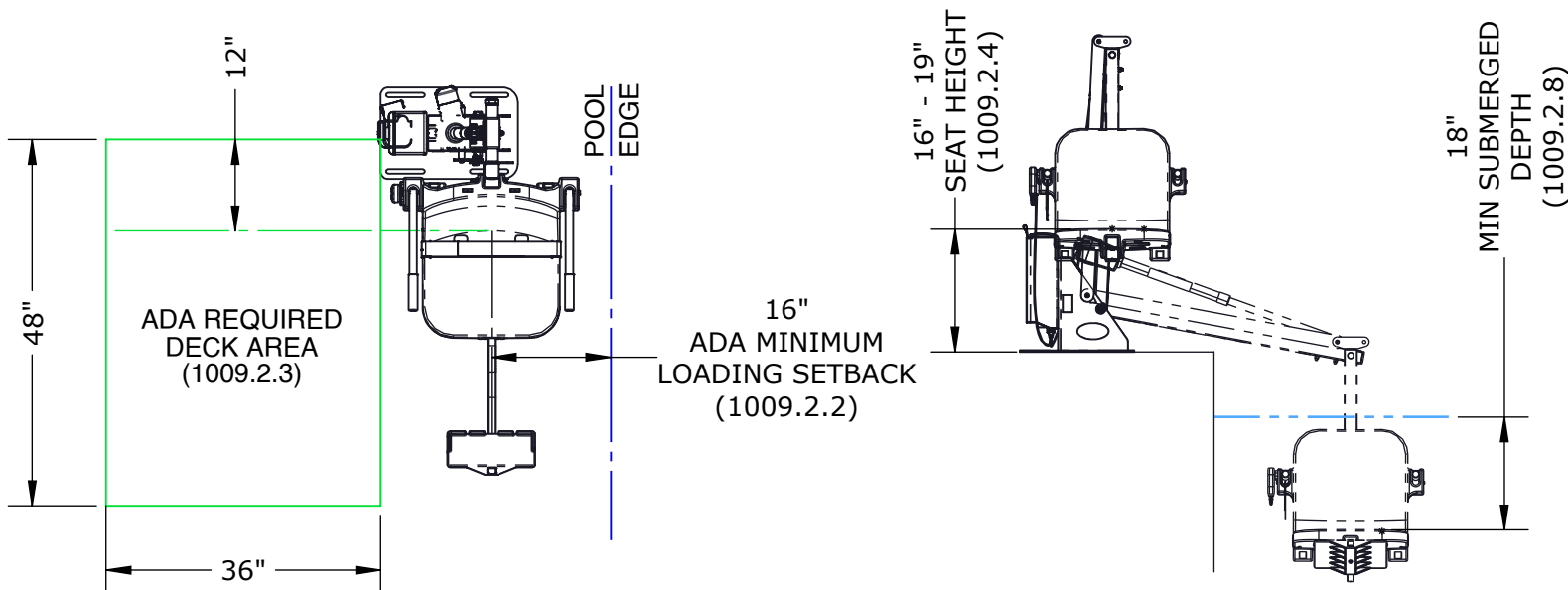
On the side of the seat opposite the water; a clear deck space shall be provided parallel with the seat. The space shall be 36" wide minimum and shall extend forward 48" minimum from a line located 12" behind the rear edge of the seat.

1009.2.4 Seat Height

The lift shall stop at 16" - 19" measured from the deck to the top of the seat surface when in the loading position.

1009.2.8 Submerged Depth

The lift shall submerge the seat a minimum of 18" below the stationary water level



*Compliance with ADA is the responsibility of the pool owner. Visit www.ada.gov for complete guidelines. 4

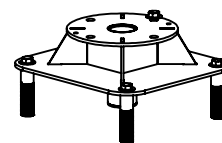
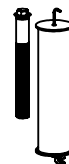
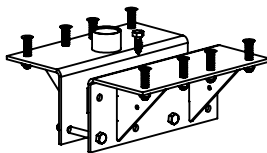
PRODUCT OVERVIEW AND APPLICATIONS

The ADA Compliant, UL Certified, Mighty 400 has the unique patented design provides for a very safe, durable, and reliable lift. Ideal for in-ground pool and spa applications or with the addition of any of the available pedestal options, the Mighty 400 is also a great choice for raised pools and spas. The long reach and heavy weight capacity make this lift a powerhouse and able to accommodate almost any type of user.

COMPATIBLE ANCHORING OPTIONS

The Mighty 400 will work with the following anchors. Anchor must be installed before the lift installation can begin. All anchors are sold separately. Contact your dealer or visit our website at www.aquacreek.com for additional anchor options.

| STANDARD ANCHOR OPTIONS | | | | |
|-------------------------|-----------------------------------|--------------------------------|-------------------------------|------------------------|
| DESCRIPTION | ANCHOR - 1.90"X6.00" - W/KIT (FG) | ANCHOR - WOOD DECK 1.90"X6.00" | ANCHOR - 1.90"X10.00" - W/KIT | ANCHOR - SEMI-RECESSED |
| CATALOG NO. | F-808SA | F-842WDA | F-808SA-10 | F-77SSA |
| PART NO. | INV01494 | INV01504 | INV01495 | INV01486 |



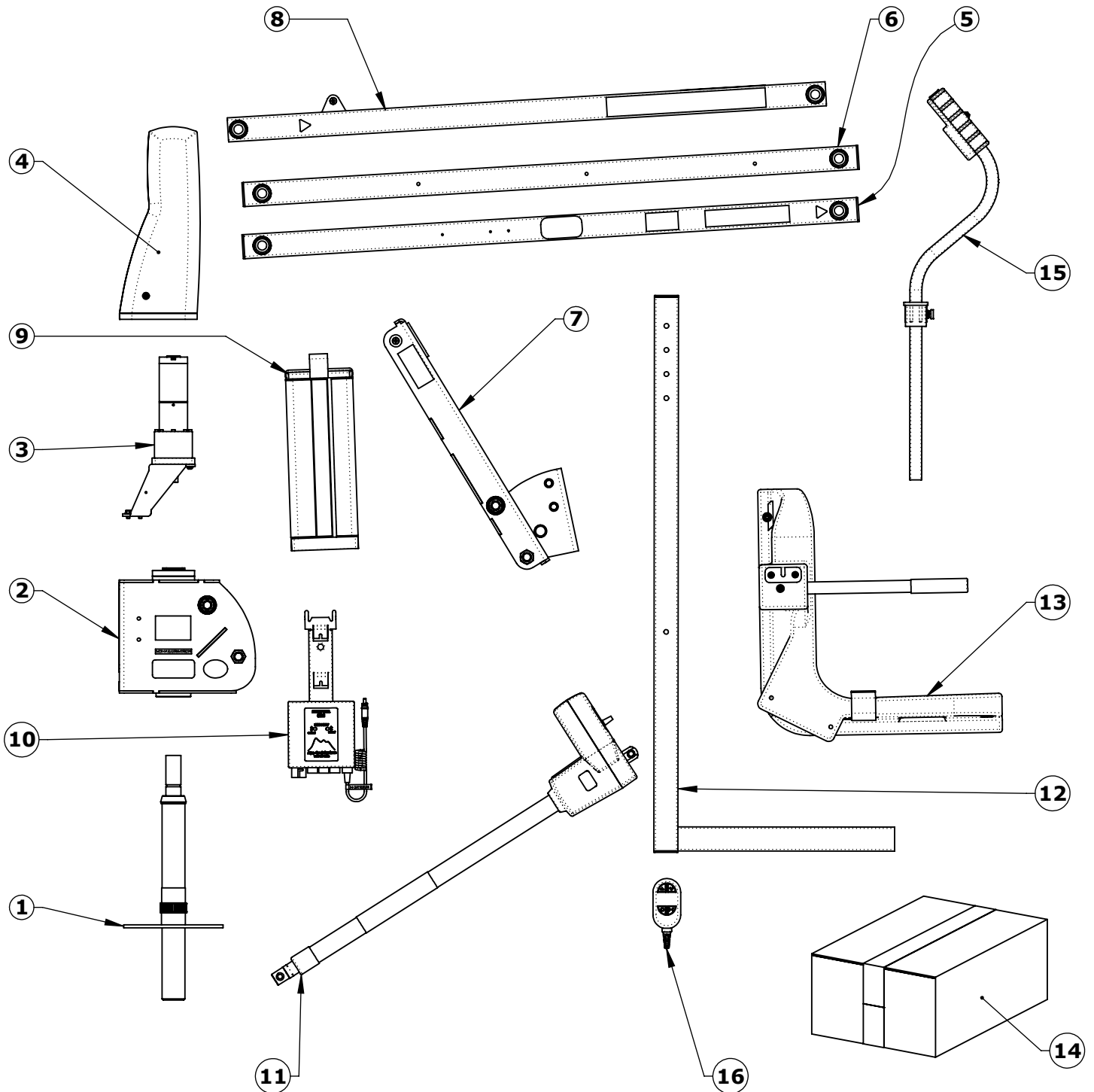
UNPACKING YOUR LIFT

As you unpack your new lift, please inspect all parts for damage from shipping and handling as parts may have shifted in transit. Please refer to the following checklist to ensure all parts are accounted for before you begin your assembly.

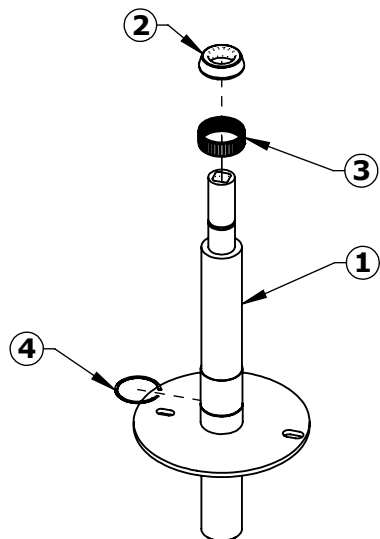
PRODUCT COMPONENTS

| MIGHTY 400 BLUE - F-MTY400 - INV01698 GRAY - F-MTY400-G - INV001840 TAN - F-MTY400-T - INV01837 WHITE - F-MTY400-W - INV01841 CUSTOM COLOR - F-MTY400-C - INV01916 | | | | | | | | |
|---|----------|------|------|-----|-------|------|--|---------|
| ITEM | PART NO. | BLUE | GRAY | TAN | WHITE | REV. | DESCRIPTION | REORDER |
| 1 | INV03491 | 1 | 1 | 1 | 1 | 1 | ASSEMBLY - ANCHOR SPINDLE - 1.90" DIA. SQ DRIVE | |
| 2 | INV02792 | 1 | 1 | 1 | 1 | 1 | ASSEMBLY - MTY MAIN FRAME | |
| 3 | INV02755 | 1 | 1 | 1 | 1 | 2 | ASSEMBLY - MOTOR MOUNT | |
| 4 | INV03502 | 1 | - | - | - | 1 | ASSEMBLY - MOTOR COVER - BLUE | |
| 4 | INV03503 | - | 1 | - | 1 | 1 | ASSEMBLY - MOTOR COVER - GRAY | |
| 4 | INV03504 | - | - | 1 | - | 1 | ASSEMBLY - MOTOR COVER - TAN | |
| 5 | INV02795 | 1 | 1 | 1 | 1 | P1 | ASSEMBLY - CONTROL ARM - 51.25" (B) | |
| 6 | INV02796 | 1 | 1 | 1 | 1 | P1 | ASSEMBLY - CONTROL ARM - 51.25" | |
| 7 | INV02791 | 1 | 1 | 1 | 1 | 1 | ASSEMBLY - TOP CASING | |
| 8 | INV02798 | 1 | 1 | 1 | 1 | 1 | ASSEMBLY - LIFTING ARM - 49.75" | |
| 9 | INV03471 | 1 | - | - | - | 1 | ASSEMBLY - BATTERY & CONTROL BOX COVER - BLUE | |
| 9 | INV03473 | - | 1 | - | 1 | 1 | ASSEMBLY - BATTERY & CONTROL BOX COVER - GRAY | |
| 9 | INV03472 | - | - | 1 | - | 1 | ASSEMBLY - BATTERY & CONTROL BOX COVER - TAN | |
| 10 | INV03563 | 1 | 1 | 1 | 1 | 1 | ASSEMBLY - CONTROL BOX MOUNT - VITO (ROTATIONAL) | |
| 11 | INV03072 | 1 | 1 | 1 | 1 | 2 | ACTUATOR KIT - 600MM - LINAK 90 DEG. | |
| 12 | INV02801 | 1 | 1 | 1 | 1 | 1 | SEAT ATTACHMENT KIT - MTY | |
| 13 | INV01417 | 1 | - | - | - | 1 | ASSEMBLY - SEAT 18.00" - BLUE | |
| 13 | INV02859 | - | 1 | - | - | 1 | ASSEMBLY - SEAT 18.00" - GRAY | |
| 13 | INV02860 | - | - | 1 | - | 1 | ASSEMBLY - SEAT 18.00" - TAN | |
| 13 | INV02861 | - | - | - | 1 | 1 | ASSEMBLY - SEAT 18.00" - GRANITE WHITE | |
| 14 | INV03287 | 1 | 1 | 1 | 1 | 1 | STOCK BOX - VITO | |
| 15 | INV01903 | 1 | - | - | - | 1 | ACCESSORY - FOOTREST - BLUE | |
| 15 | INV01905 | - | 1 | - | - | 1 | ACCESSORY - FOOTREST - GRAY | |
| 15 | INV01904 | - | - | 1 | - | 1 | ACCESSORY - FOOTREST - TAN | |
| 15 | INV01906 | - | - | - | 1 | 1 | ACCESSORY - FOOTREST - WHITE | |
| 16 | INV01845 | 1 | 1 | 1 | 1 | - | REMOTE - 4 BUTTON LINAK | |

PRODUCT COMPONENTS

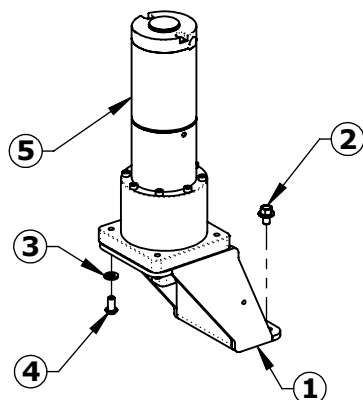
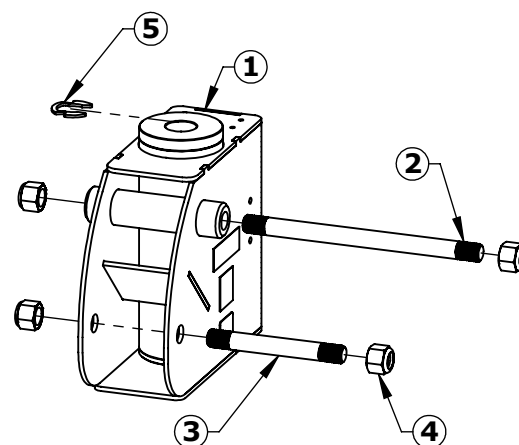


COMPONENT DETAILS



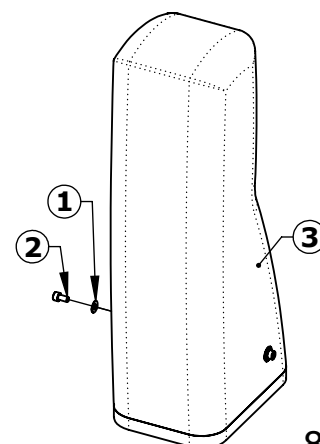
| ASSEMBLY - ANCHOR SPINDLE - 1.90" DIA. SQ DRIVE - INV03491 | | | | | |
|--|----------|------|------|---|---------|
| ITEM | PART NO. | QTY. | REV. | DESCRIPTION | REORDER |
| 1 | INV03490 | 1 | 1 | WELDMENT - ANCHOR SPINDLE SQ DRIVE | |
| 2 | INV00378 | 1 | - | ROLLER BEARING - 1.25"I.D. X 2.33"O.D. X 5/8" | |
| 3 | INV00617 | 1 | - | NEEDLE BEARING - K50MMX55MMX20MM | |
| 4 | INV01834 | 1 | - | RETAINING RING - EXTERNAL (SPIRAL) | |

| ASSEMBLY - MAIN FRAME - INV02792 | | | | | |
|----------------------------------|----------|------|------|--|---------|
| ITEM | PART NO. | QTY. | REV. | DESCRIPTION | REORDER |
| 1 | INV02075 | 1 | 1 | WELDMENT - MTY MAIN FRAME | |
| 2 | INV01823 | 1 | 1 | MACHINED - TS - 3/4"-10X10.50" THREADED STUD | |
| 3 | INV01821 | 1 | 1 | MACHINED - TS - 3/4"-10X6.00" THREADED STUD | |
| 4 | INV00738 | 4 | - | NN - 3/4"-10 NYLOCK NUT | |
| 5 | INV01835 | 1 | - | RETAINING RING - 1-1/4" OD EXTERNAL | |



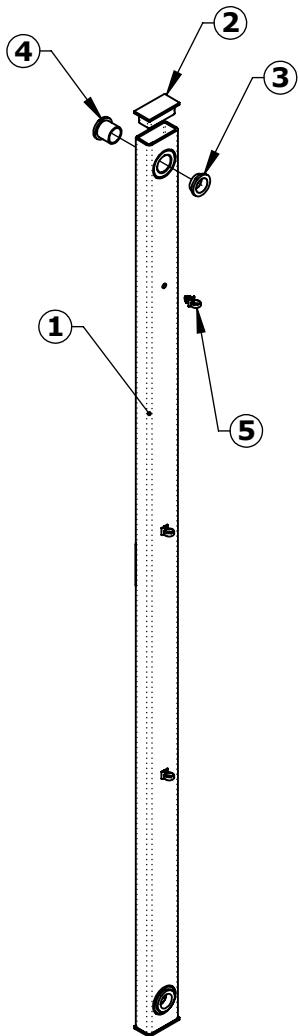
| ASSEMBLY - MOTOR MOUNT - INV02755 | | | | | |
|-----------------------------------|----------|------|------|--|---------|
| ITEM | PART NO. | QTY. | REV. | DESCRIPTION | REORDER |
| 1 | INV02083 | 1 | 1 | WELDMENT - MOTOR MOUNT | |
| 2 | INV00428 | 4 | - | BOLT - BHW 1/4"-20X3/8" SERRATED | |
| 3 | INV01182 | 4 | - | WL - 1/4" LOCK WASHER | |
| 4 | INV00345 | 4 | - | BB - 1/4"-20X1/2" BUTTON HEAD BOLT | |
| 5 | INV03462 | 1 | 1 | PART - ROTATIONAL MOTOR - SQUARE DRIVE-24VDC | |

| ASSEMBLY - MOTOR COVER BLUE - INV03502 GRAY - INV03503 TAN - INV03504 | | | | | | |
|--|----------|------|------|-----|------|------------------------------------|
| ITEM | PART NO. | BLUE | GRAY | TAN | REV. | DESCRIPTION |
| 1 | INV01172 | 2 | 2 | 2 | - | WF - #10 FLAT WASHER |
| 2 | INV00471 | 2 | 2 | 2 | - | BSH - #10-24X3/8" SOCKET HEAD BOLT |
| 3 | INV01747 | 1 | - | - | 1 | COVER - MOTOR - BLUE |
| 4 | INV01839 | - | 1 | - | 1 | COVER - MOTOR - GRAY |
| 5 | INV01838 | - | - | 1 | 1 | COVER - MOTOR - TAN |



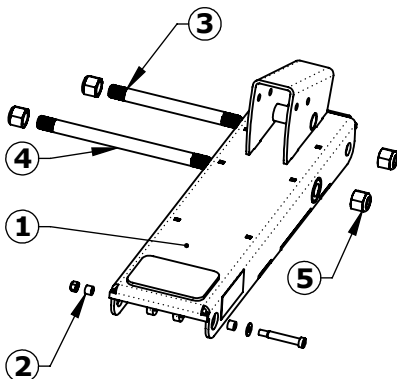
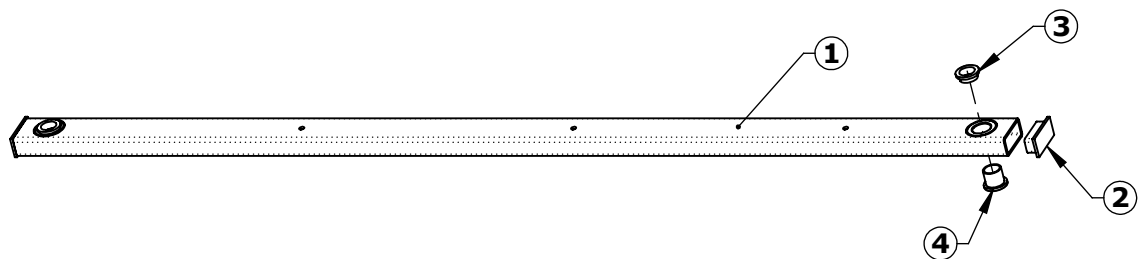
*ALL LABELS (EXCEPT BATTERY LABELS) INCLUDED IN "LABEL SHEET" ON REORDER PAGE

COMPONENT DETAILS



| ASSEMBLY - CONTROL ARM - 51.25" (B) - INV02795 | | | | | |
|--|----------|------|------|--|---------|
| ITEM | PART NO. | QTY. | REV. | DESCRIPTION | REORDER |
| 1 | INV02078 | 1 | P1 | WELDMENT - CONTROL ARM - 51.00" | |
| 2 | INV00978 | 2 | - | END CAP - RECT. 1.00"X2.00"X.120" | |
| 3 | INV00445 | 2 | - | BRB - 3/4"X7/8"X1/4"X1/8" BRONZE BUSHING | |
| 4 | INV00446 | 2 | - | BRB - 3/4"X7/8"X3/4"X1/8" BRONZE BUSHING | |
| 5 | INV00179 | 3 | P1 | CLIP - ROUTING 3/8" | |

| ASSEMBLY - CONTROL ARM - 51.25" - INV02796 | | | | | |
|--|----------|------|------|--|---------|
| ITEM | PART NO. | QTY. | REV. | DESCRIPTION | REORDER |
| 1 | INV02078 | 1 | P1 | WELDMENT - CONTROL ARM - 51.00" | |
| 2 | INV00978 | 2 | - | END CAP - RECT. 1.00"X2.00"X.120" | |
| 3 | INV00445 | 2 | - | BRB - 3/4"X7/8"X1/4"X1/8" BRONZE BUSHING | |
| 4 | INV00446 | 2 | - | BRB - 3/4"X7/8"X3/4"X1/8" BRONZE BUSHING | |



| ASSEMBLY - TOP CASING | | | | | |
|-----------------------|----------|------|------|--|---------|
| ITEM | PART NO. | QTY. | REV. | DESCRIPTION | REORDER |
| 1 | INV02084 | 1 | 1 | WELDMENT - TOP CASING | |
| 2 | INV00448 | 2 | - | BRB - 1/2"X3/8"X3/8" BRONZE BUSHING | |
| 3 | INV01822 | 1 | 1 | MACHINED - TS - 3/4"-10X8.00" THREADED STUD | |
| 4 | INV01823 | 1 | 1 | MACHINED - TS - 3/4"-10X10.50" THREADED STUD | |
| 5 | INV00738 | 4 | - | NN - 3/4"-10 NYLOCK NUT | |
| 6 | INV00464 | 1 | - | BS - 3/8"X2"X5/16"-18 SHOULDER BOLT | |
| 7 | INV01176 | 1 | - | WF - 5/16" FLAT WASHER | |
| 8 | INV00742 | 1 | - | NN - 5/16"-18 NYLOCK NUT | |

*ALL LABELS (EXCEPT BATTERY LABELS) INCLUDED IN "LABEL SHEET" ON REORDER PAGE

9

UPDATED:
5 - 1/16/2026

WWW.AQUACREEK.COM
© 2024 AQUA CREEK PRODUCTS. ALL RIGHTS RESERVED.

9889 GARRYMORE LANE
MISSOULA, MT 59808
(406) 549-0769
FAX (406) 549-2602

COMPONENT DETAILS

ASSEMBLY - LIFTING ARM - 49.75" - INV02798

| ITEM | PART NO. | QTY. | REV. | DESCRIPTION | REORDER |
|------|----------|------|------|--|---------|
| 1 | INV02085 | 1 | P1 | WELDMENT - LIFTING ARM - 49.75" | |
| 2 | INV00448 | 2 | - | BRB - 1/2"X3/8"X3/8" BRONZE BUSHING | |
| 3 | INV00446 | 4 | - | BRB - 3/4"X7/8"X3/4"X1/8" BRONZE BUSHING | |
| 4 | INV00464 | 1 | - | BS - 3/8"X2"X5/16"-18 SHOULDER BOLT | |
| 5 | INV01176 | 1 | - | WF - 5/16" FLAT WASHER | |
| 6 | INV00742 | 1 | - | NN - 5/16"-18 NYLOCK NUT | |

ASSEMBLY - CONTROL BOX (VITO) - INV03563

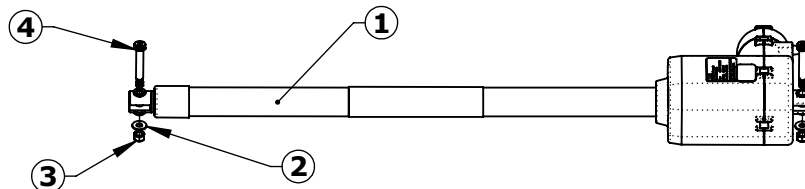
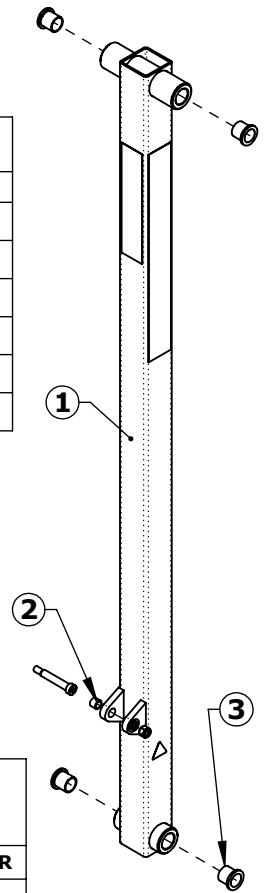
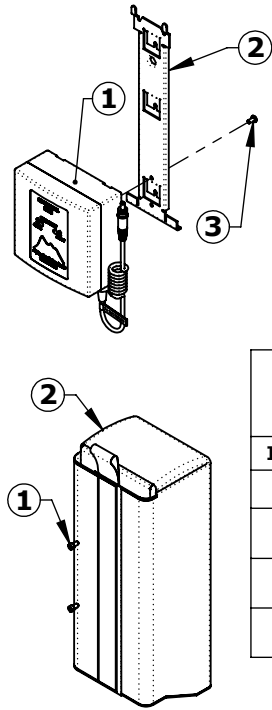
| ITEM | PART NO. | QTY. | REV. | DESCRIPTION | REORDER |
|------|----------|------|------|--|---------|
| 1 | INV01453 | 1 | 1 | ASSEMBLY - CONTROL BOX - VITO (ROTATIONAL) | |
| 2 | INV00612 | 1 | - | BRACKET - VITO MOUNT | |
| 3 | INV03477 | 1 | 1 | SPH 10-32 X 3/8" PHILLIPS HEAD SCREW | |

CONTROL BOX COVER (VITO) BLUE - INV03471 TAN - INV03472 GRAY - INV03473

| ITEM | PART NO. | BLUE | GRAY | TAN | REV. | DESCRIPTION | REORDER |
|------|----------|------|------|-----|------|---|---------|
| 1 | INV00471 | 2 | 2 | 2 | - | BSH - #10-24X3/8" SOCKET HEAD BOLT | |
| 2 | INV00588 | 1 | - | - | 1 | COVER - BATTERY & CONTROL BOX - LINAK & VITO - BLUE | |
| 3 | INV00589 | - | 1 | - | 1 | COVER - BATTERY & CONTROL BOX - LINAK & VITO - GRAY | |
| 4 | INV00590 | - | - | 1 | 1 | COVER - BATTERY & CONTROL BOX - LINAK & VITO - TAN | |

ACTUATOR KIT - LINAK - 600MM - 90DEG. - INV03072

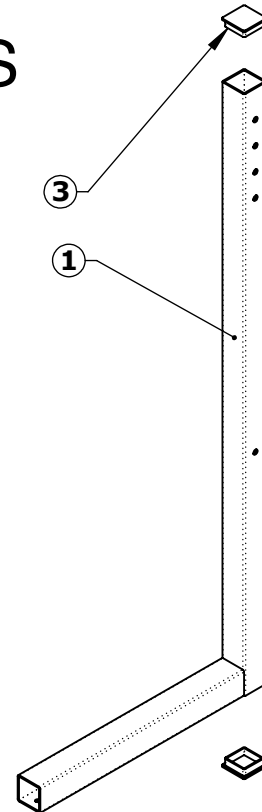
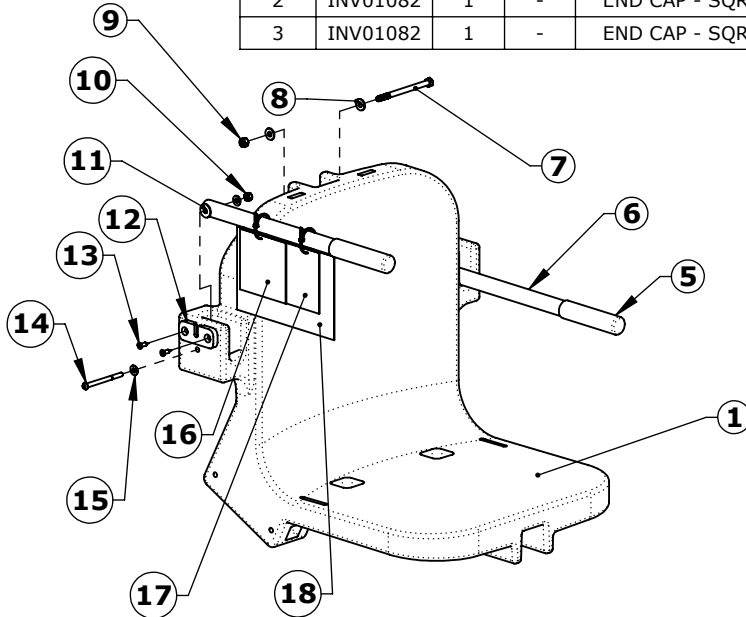
| ITEM | PART NO. | QTY. | REV. | DESCRIPTION | REORDER |
|------|----------|------|------|-------------------------------------|---------|
| 1 | INV01677 | 1 | 1 | ACTUATOR - 600MM LINAK 90 DEG. | |
| 2 | INV01176 | 2 | - | WF - 5/16" FLAT WASHER | |
| 3 | INV00742 | 2 | - | NN - 5/16"-18 NYLOCK NUT | |
| 4 | INV00464 | 2 | - | BS - 3/8"X2"X5/16"-18 SHOULDER BOLT | |



*ALL LABELS (EXCEPT BATTERY LABELS) INCLUDED IN "LABEL SHEET" ON REORDER PAGE

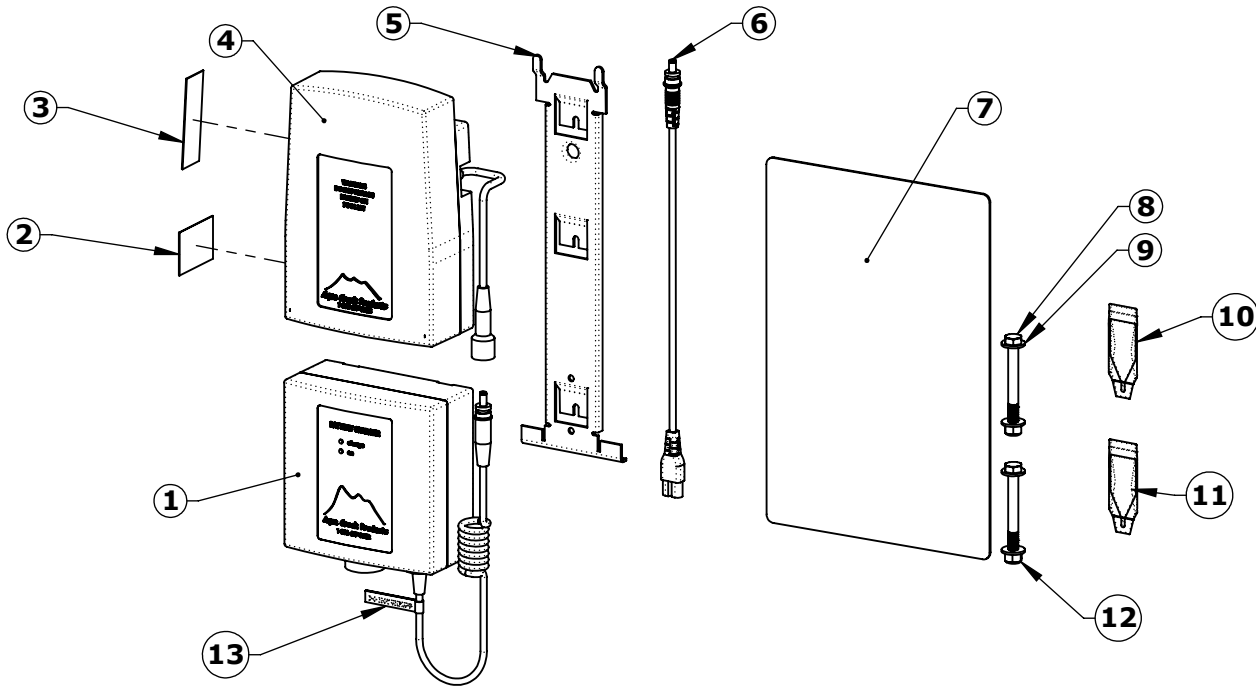
COMPONENT DETAILS

| ASSEMBLY - SEAT CRADLE - INV02801 | | | | | |
|-----------------------------------|----------|------|------|----------------------------|---------|
| ITEM | PART NO. | QTY. | REV. | DESCRIPTION | REORDER |
| 1 | INV02082 | 1 | 1 | WELDMENT - SEAT CRADLE | |
| 2 | INV01082 | 1 | - | END CAP - SQR. 2.00"X.120" | |
| 3 | INV01082 | 1 | - | END CAP - SQR. 2.00"X.120" | |



| ASSEMBLY - SEAT 18.00" BLUE - INV01417 GRAY - INV02859 TAN - INV02860 WHITE - INV02861 | | | | | | | | |
|--|----------|------|------|-----|-------|------|---|---------|
| ITEM | PART NO. | BLUE | GRAY | TAN | WHITE | REV. | DESCRIPTION | REORDER |
| 1 | INV00819 | 1 | - | - | - | 1 | ROTOMOLD - SEAT 18.00" - BLUE | |
| 2 | INV00825 | - | 1 | - | - | 1 | ROTOMOLD - SEAT 18.00" - GRAY | |
| 3 | INV00826 | - | - | 1 | - | 1 | ROTOMOLD - SEAT 18.00" - TAN | |
| 4 | INV00820 | - | - | - | 1 | 1 | ROTOMOLD - SEAT 18.00" - GRANITE WHITE | |
| 5 | INV01031 | 2 | 2 | 2 | 2 | - | HAND GRIP - RUBBER 1.00" DIA. | |
| 6 | INV02227 | 2 | 2 | 2 | 2 | 1 | MAKE - ARMREST TUBE | |
| 7 | INV00421 | 1 | 1 | 1 | 1 | - | BH - 5/16"-18X4 1/2" HEX HEAD BOLT | |
| 8 | INV01176 | 2 | 2 | 2 | 2 | - | WF - 5/16" FLAT WASHER | |
| 9 | INV00742 | 1 | 1 | 1 | 1 | - | NN - 5/16"-18 NYLOCK NUT | |
| 10 | INV00735 | 2 | 2 | 2 | 2 | - | NN - 1/4"-20 NYLOCK NUT | |
| 11 | INV03136 | 2 | 2 | 2 | 2 | - | WF - 5/16" NYLON | |
| 12 | INV00783 | 1 | 1 | 1 | 1 | 1 | REMOTE HOLDER | |
| 13 | INV01057 | 2 | 2 | 2 | 2 | - | SFH - #12X3/4" PHILLIPS HEAD SCREW | |
| 14 | INV00349 | 2 | 2 | 2 | 2 | - | BB - 1/4"-20X3 1/4" BUTTON HEAD BOLT | |
| 15 | INV01170 | 4 | 4 | 4 | 4 | - | WF - 1/4" FLAT WASHER | |
| 16 | INV03378 | 1 | 1 | 1 | 1 | 1 | LABEL #203 - ATTENTION: ADJUSTABLE SEAT WARNING TAG | |
| 17 | INV00670 | 1 | 1 | 1 | 1 | 1 | LABEL #87 - PROPER CARE | |
| 18 | INV00665 | 1 | 1 | 1 | 1 | 1 | LABEL #75 - SAFETY CARD | |

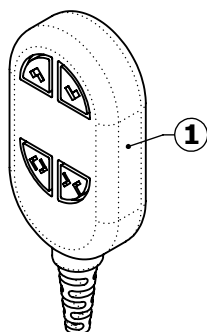
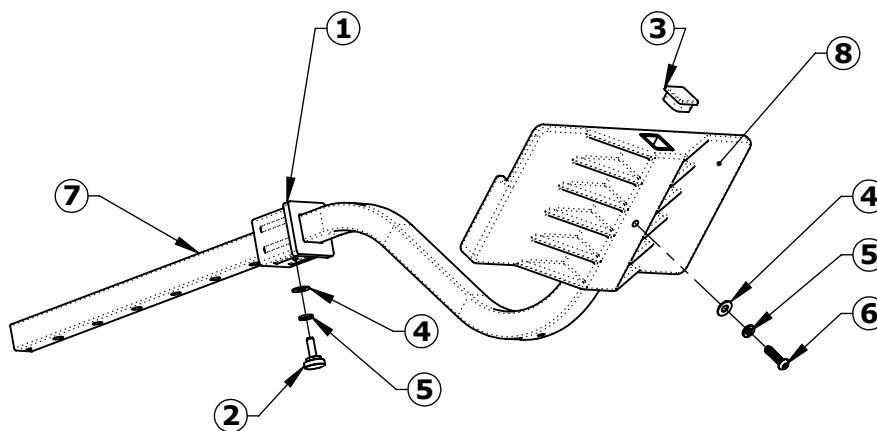
COMPONENT DETAILS



| STOCK BOX - VITO - INV03287 | | | | | |
|-----------------------------|----------|------|------|--|---------|
| ITEM | PART NO. | QTY. | REV. | DESCRIPTION | REORDER |
| 1 | INV01152 | 1 | - | CHARGER - VITO 24V | |
| 2 | INV01804 | 1 | - | LABEL #146 - DAILY CHARGE | |
| 3 | INV00646 | 1 | - | LABEL #133 - PROP 65 (BATTERY) | |
| 4 | INV01153 | 1 | - | BATTERY - VITO 24V - 2PC CONTROLS | |
| 5 | INV00611 | 1 | P1 | BRACKET - WALL MOUT (VITO) | |
| 6 | INV00591 | 1 | - | TEST CABLE - VITO 24V | |
| 7 | INV00578 | 1 | 1 | SIGN - "ADA LIFT AVAILABLE" (AQUA CREEK) | |
| 8 | INV00418 | 2 | - | BOLT - HEX 5/16"-18X3" | |
| 9 | INV01176 | 4 | - | WF - 5/16" FLAT WASHER | |
| 10 | INV00303 | 1 | - | ANTI-SEIZE - PACKET - 5 GRAMS | |
| 11 | INV00249 | 1 | - | DIELECTRIC GREASE PACKET - 6 GRAMS | |
| 12 | INV00742 | 2 | - | NN - 5/16"-18 NYLOCK NUT | |
| 13 | INV01699 | 1 | P1 | LABEL #145 - DO NOT UNPLUG | |

COMPONENT DETAILS

| ACCESSORY - FOOTREST BLUE - INV01903 GRAY - INV01905 TAN - INV01904 WHITE - INV01906 | | | | | | | | |
|--|----------|------|------|-----|-------|------|-------------------------------------|---------|
| ITEM | PART NO. | BLUE | GRAY | TAN | WHITE | REV. | DESCRIPTION | REORDER |
| 1 | INV01578 | 1 | 1 | 1 | 1 | 1 | PART - LEG/FOOTREST INSERT | |
| 2 | INV02364 | 1 | 1 | 1 | 1 | - | KNOB - 3/4" KNURLED - 1/4-20 X 3/4" | |
| 3 | INV01078 | 1 | 1 | 1 | 1 | - | END CAP - SQR. 1.00"X.120" | |
| 4 | INV01170 | 2 | 2 | 2 | 2 | - | WF - 1/4" FLAT WASHER | |
| 5 | INV01182 | 2 | 2 | 2 | 2 | - | WL - 1/4" LOCK WASHER | |
| 6 | INV00341 | 1 | 1 | 1 | 1 | - | BOLT - BHSCS 1/4"-20X1" | |
| 7 | INV02465 | 1 | 1 | 1 | 1 | 2 | BEND - FOOTREST W/HOLES | |
| 8 | INV01894 | 1 | - | - | - | 1 | PART - LEG/FOOTREST - BLUE | |
| 9 | INV01897 | - | 1 | - | - | 1 | PART - LEG/FOOTREST - GRAY | |
| 10 | INV01895 | - | - | 1 | - | 1 | PART - LEG/FOOTREST - TAN | |
| 11 | INV01896 | - | - | - | 1 | 1 | PART - LEG/FOOTREST - WHITE | |

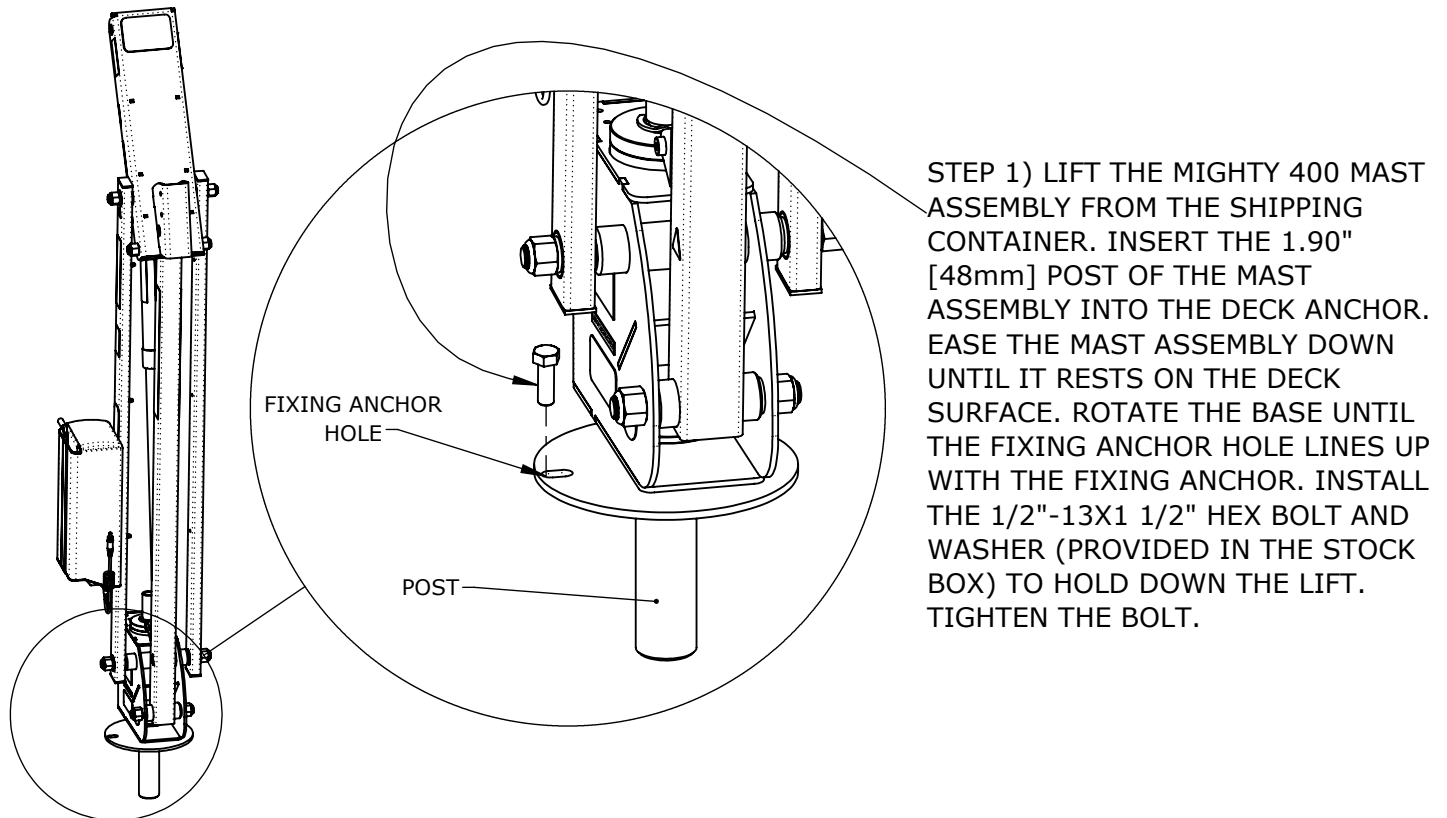


| REMOTE - 4 BUTTON LINAK - INV01845 | | | | | |
|------------------------------------|----------|------|------|-------------------------|---------|
| ITEM | PART NO. | QTY. | REV. | DESCRIPTION | REORDER |
| 1 | INV01845 | 1 | - | REMOTE - 4 BUTTON LINAK | |

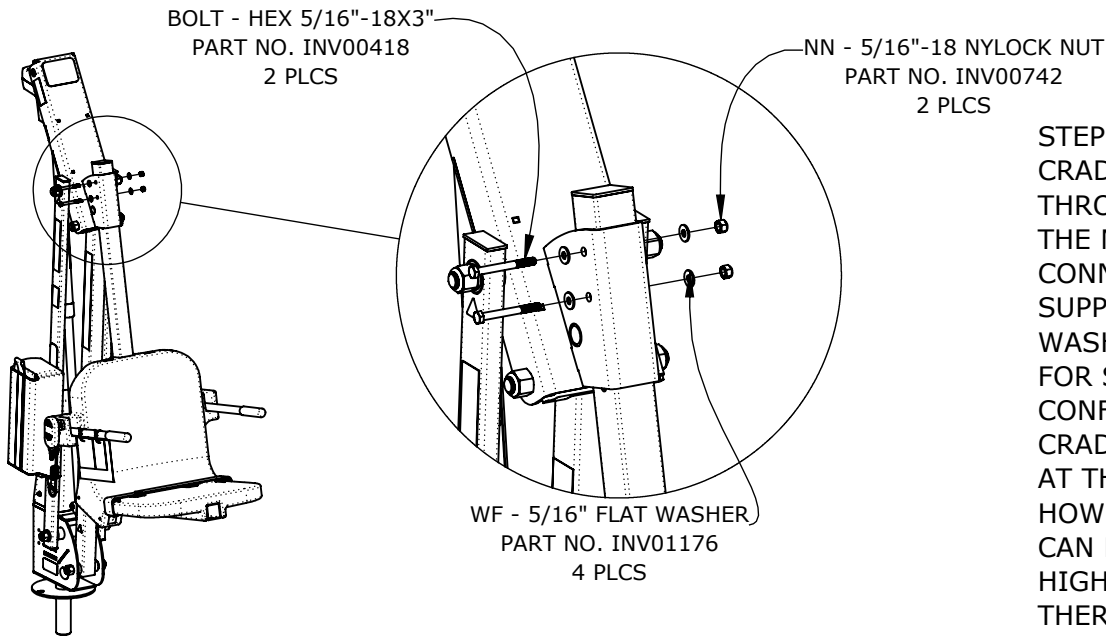
PRODUCT ASSEMBLY

NOTES:

- READ ALL INSTRUCTIONS FULLY AND USE ALL COMPONENTS SHOWN IN EACH STEP BEFORE MOVING ON TO THE NEXT STEP.
- ADD A SMALL AMOUNT OF ANTI-SEIZE TO ALL THREADS DURING ASSEMBLY (LUBE PACKET PROVIDED). THIS WILL HELP PREVENT SEIZING OF BOLTS.
- BE CAREFUL NOT TO OVERTIGHTEN BOLTS. OVERTIGHTENING CAN CAUSE DAMAGE AND COMPROMISE THE SAFETY OF YOUR LIFT.

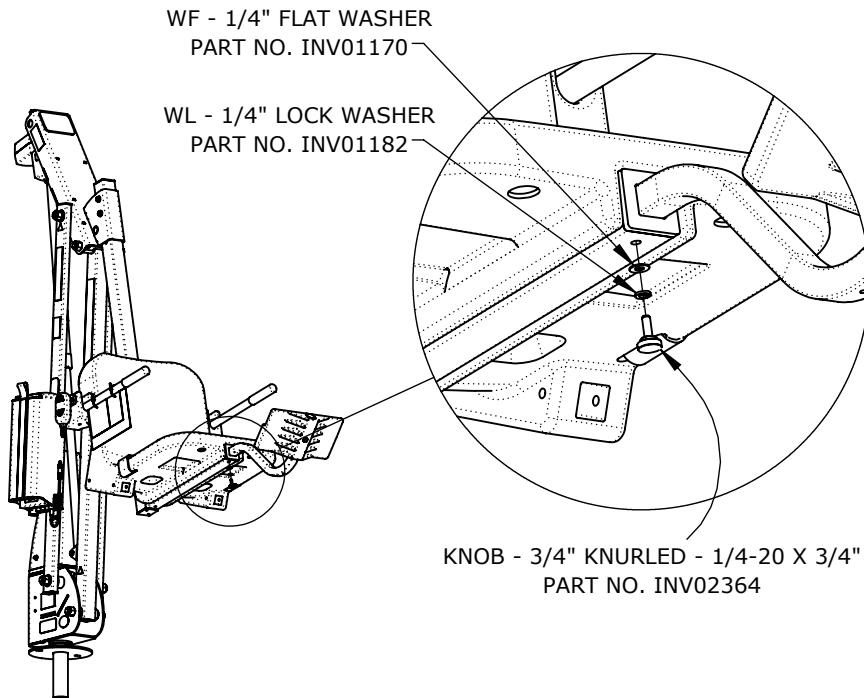


PRODUCT ASSEMBLY



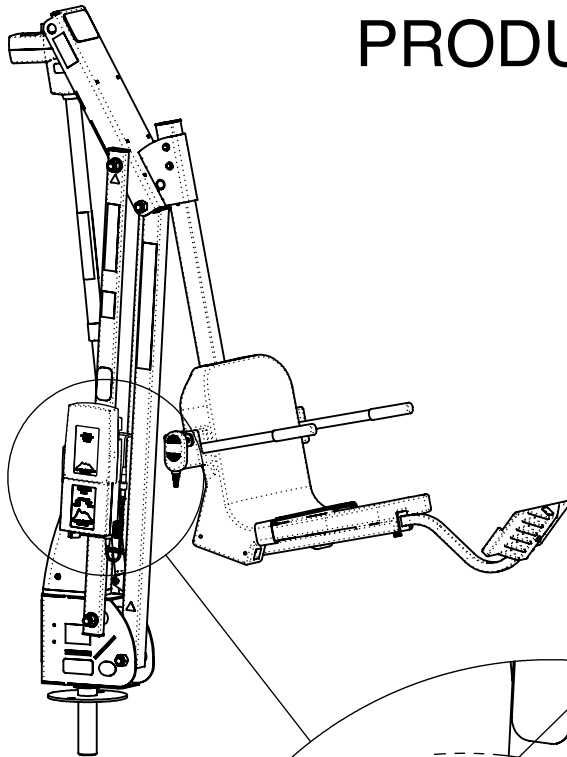
STEP 2) SLIDE THE SEAT CRADLE ASSEMBLY UP THROUGH THE TOP CASING OF THE MAST ASSEMBLY AND CONNECT USING THE SUPPLIED 5/16" HEX BOLTS, WASHERS AND NYLOCK NUTS. FOR STANDARD POOL CONFIGURATION THE SEAT CRADLE WILL BE CONNECTED AT THE TOP TWO HOLES. HOWEVER, THE SEAT CRADLE CAN BE ADJUSTED UP TO 6" HIGHER, IN 2" INCREMENTS, IF THERE IS A NEED FOR IT.

NEVER USE THE LIFT WITHOUT BOTH HEX BOLTS INSTALLED!



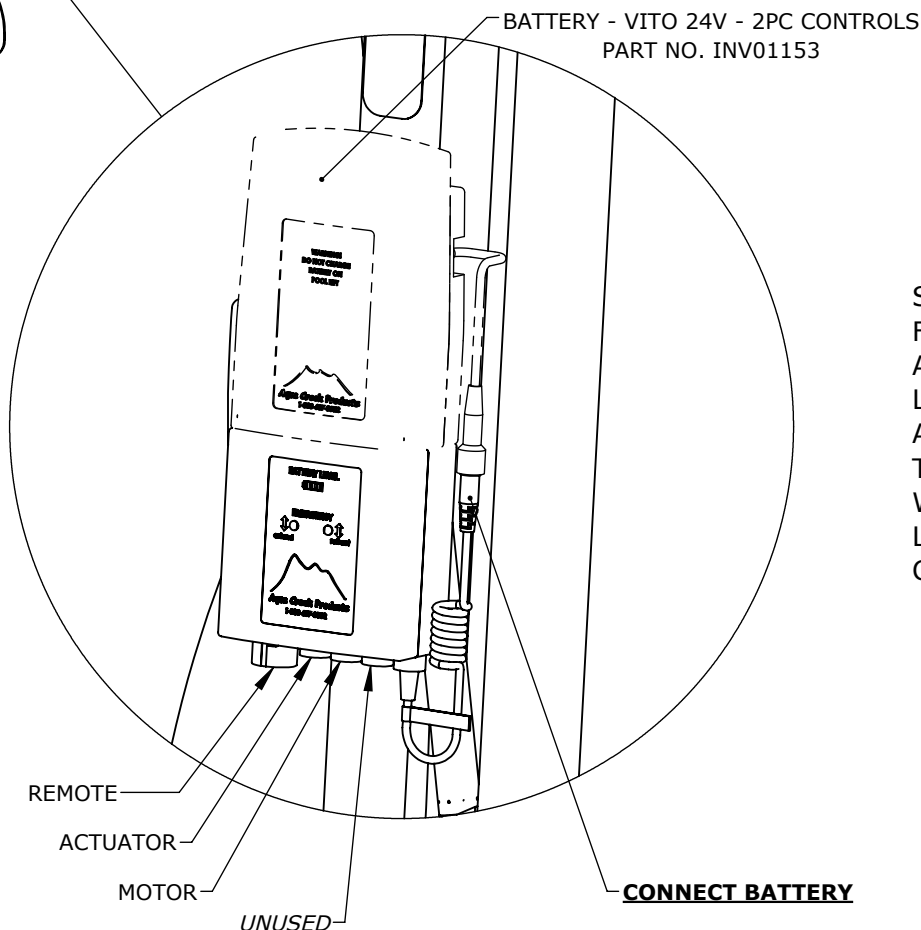
STEP 3) INSERT THE FOOTREST ASSEMBLY INTO THE 2"X2" SQUARE TUBING THAT SUPPORTS THE SEAT UNTIL THE PLASTIC INSERT OF THE FOOTREST ASSEMBLY SITS FLUSH AGAINST THE END OF THE 2"X2" TUBE. USING THE SUPPLIED 1/4" HARDWARE, FASTEN THE LEGREST ASSEMBLY TO THE 2"X2" TUBING.

PRODUCT ASSEMBLY



STEP 4) REMOVE THE FULLY CHARGED BATTERY FROM THE CHARGER AND INSTALL THE BATTERY TO THE CONTROL BRACKET, ON TOP OF THE CONTROL BOX. ONCE SECURE, CONNECT THE BATTERY CABLE TO THE CONTROL BOX CABLE. THE LIFT WILL ONLY OPERATE WHEN THE BATTERY IS CONNECTED PROPERLY.

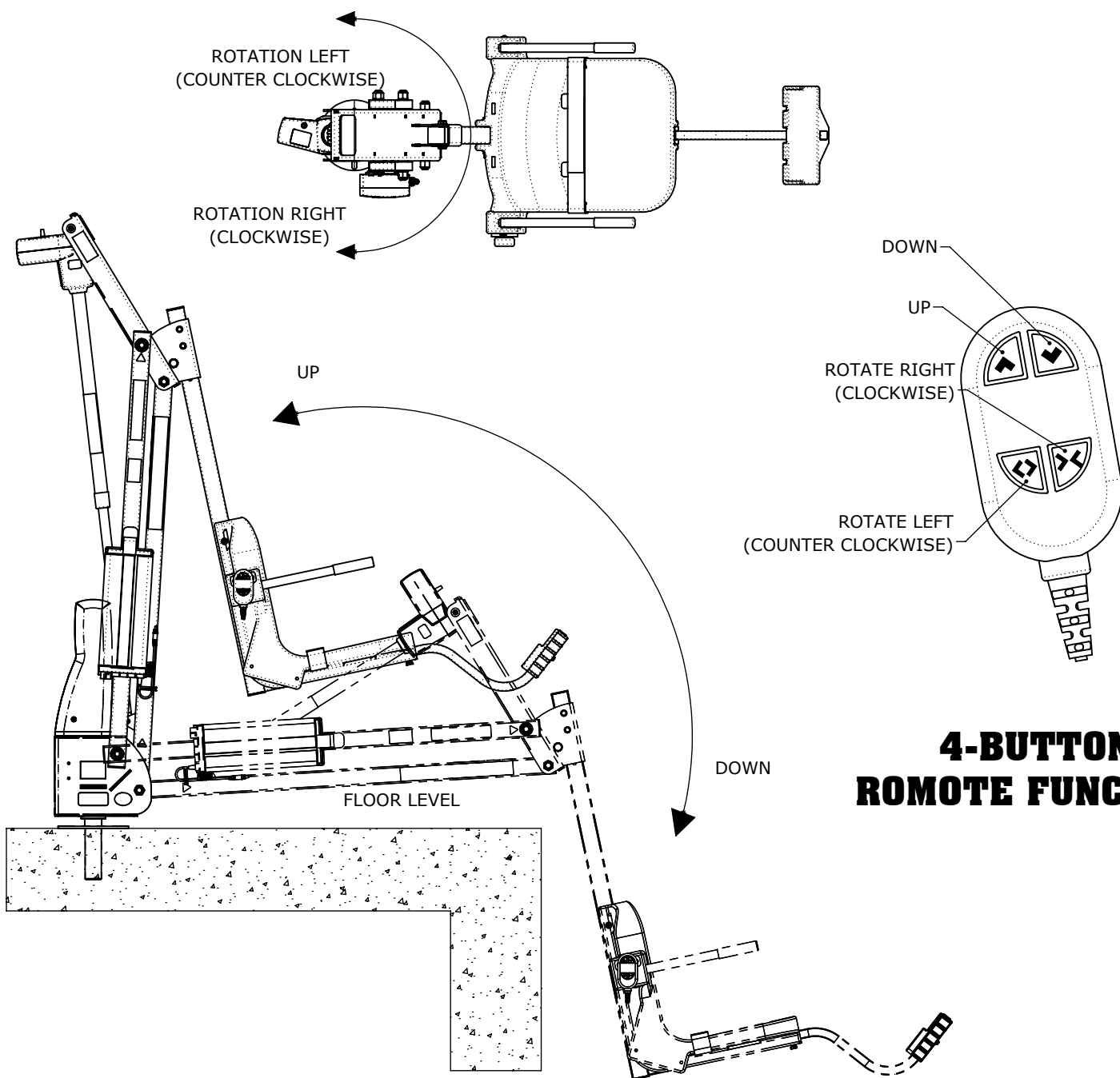
WHEN THE LIFT IS NOT IN SERVICE, STORE BATTERY ON THE CHARGER!



STEP 5) WITH THE LIFT FULLY ASSEMBLED AND ANCHORED, RUN THE LIFT COMPLETELY OUT AND BACK IN 3 TO 5 TIMES, WITHOUT WEIGHT, FOR THE LIFT'S "BREAK IN" CYCLE PERIOD.

OPERATION INSTRUCTIONS

CONGRATULATIONS, YOUR LIFT IS NOW READY FOR USE!



**4-BUTTON
REMOTE FUNCTION**

MAINTENANCE INSTRUCTIONS

| PROCEDURE | BEFORE EACH USE | DAILY | WEEKLY | MONTHLY |
|--|-----------------|-------|--------|---------|
| Check battery level indicator on control box. | ✓ | | | |
| Run the lift through a complete test cycle (fully extend actuator) to verify it is functioning properly. | ✓ | | | |
| Wash lift with fresh water and dry with clean, soft, non-abrasive cloth. | | ✓ | | |
| Recharge battery. | | ✓ | | |
| Visually inspect lift for damage, corrosion, and loose or missing hardware. | | ✓ | | |
| Check all contact points for damage and/or corrosion. | | | ✓ | |
| Clean all contact points, and apply dielectric grease as needed. | | | ✓ | |
| Thoroughly clean lift frame and apply a liberal coat of car wax to maintain the lift's finish. | | | | ✓ |
| Check all Warning and Cautionary labels to make sure they are not faded or worn. Replace as needed. | | | | ✓ |

PROPER CARE NOTES:

- Use only fresh water to wash your lift. Do not wash with pool water.
- Use only clean, soft, non-abrasive cloths on your lift.
- Do not store lift or electronics in pump room or near chemicals.
- Do not allow children to play on or around this lift.
- When cleaning the lift, do not spray water directly on control box or battery.
- The lift may need to be bonded according to local code requirements.
- If the lift is not used for extended periods, remove the battery from the lift and store it on the wall charger to maintain the batteries charge. The charger should be plugged in and in a climate controlled area.

STAIN REMOVAL NOTES:

To remove stubborn stains from finish, spray affected area with mild dish soap, rub briskly with a 3M Scotch Brite™ pad. Use white epoxy paint to touch up the finish. Apply wax to protect when dry.

LIFT INSPECTION INFORMATION

| | |
|------------------|--|
| Test Date: | |
| Pool Lift Model: | |
| Serial Number: | |
| Inspected By: | |

Inspection Notes:

Please read and fill out all information carefully

Improper use and/or maintenance of pool lift can lead to actuator and/or other mechanical failures and possible personal injury. Please read and follow the product operators' manual and the instructions below.

NOTE: Completely cycle the lift without a load before each use to verify the lift is functioning properly.

- Product service life depends on the load characteristics, type and frequency of use, and the environment in which the product is being used. For example, persons not calmly sitting but falling down with their full body weight in the chair, or using the pool lift's chair as a diving platform can casue premature actuator failure and/or possible personal injury.
- Based on historical product service life analysis, Aqua Creek recommends replacing the actuator(s) and other electronic components after 5 years of service. Check component serial numbers and purchase records to verify the age of your components.
- A functional weight lifting force of a maximum of 100lbs. Must be periodically verified by applying a non-live load (without a person) through the entire operating cycle of the lift. This process is performed in order to verify the smooth operation. Make note of any unusual noises or sudden movements coming from the actuator(s) or other components. Note: In some lifts, a sudden quick movement at the beginning of the cycle is normal but should smooth out over the course of operation.
- Creating a side load on the actuator by pushing and/or pulling on the actuator, especially under load conditions, can casue damage to the actuator and or personal injury.
- Electronic components are designed to be plug-and-play type replacements. There is no need to access the internal mechanisms in these components. The actuator, battery, and all electronic components may only be disassembled by authorized factory-trained personnel. Disassembly of electronic components by improperly trained and unauthorized persons will void the warranty on those components.
- The operator of the pool lift should never allow the pool lift to hit any stationary object either vertically or horizontally while operating a pool lift, i.e. walls, ceiling, pool/spa bench, etc.
- For quick and accurate troubleshooting and inspections, we recommend having a voltmeter on hand as well as adequate test and replacement components for the unit.
- Remove the pool lift from service immediately if any unusual noise is heard coming from the actuator such as grinding, popping or sudden inconsistent movements.
- Immediately remove from service any lift that does not have 100% compliance with the inspection until the appropriate corrections have been made by a qualified person.

ANNUAL VISUAL INSPECTION

Corrosion is common with anything in a swimming pool environment; even stainless steel. Proper and regular maintenance and cleaning will prevent most instances of corrosion. Replace any components that have corrosion caused pitting, cracking, thinning of the base metal, or other instances of corrosion that can't be eliminated and/or minimized through thorough cleaning. Refer to product manual for additional maintenance instructions. Make comments and/or recommendations in the notes area below each section.

| INSPECTION ITEM | PASS | FAIL | N/A |
|--|------|------|-----|
| 1. Anchor bolts, concrete around anchors, etc... are in good condition. No cracks in concrete, missing hardware, and anchors are installed correctly. | | | |
| 2. The fixing anchor is installed correctly and is in good condition. | | | |
| 3. Powder coated components are clean, corrosion free, and in good overall condition. Clean and repair any missing powder coat finish. Apply a coat of wax on the cleaned and repaired finish. | | | |
| 4. Welded joints show no signs of cracks or fatigue. Replace any non-compliant components. | | | |
| 5. Hardware is present, secure, and not corroded (bolts, nuts, bushings, etc...). | | | |
| 6. All wiring routing clips are present and in good condition. | | | |
| 7. All product warning labels are present and legible. | | | |
| 8. Plastic seat, foot rest, and other plastic components are present and in good condition. | | | |
| 9. Armrest hand grips are present, in good condition, and are well secured to the arms. | | | |
| 10. Electronic and lift covers are present and in good condition (Lift covers are highly recommended for outdoor installations). | | | |
| 11. Inspect rotation gears for any damage or missing teeth. Inspect rotation motor gear and alignment to ensure proper rotation of the lift. | | | |
| 12. Inspect lift slings, seat belts, and other similar stitched and webbed or weaved materials for damage, fatigue, and/or deterioration. Replace at first sign of any fatigue or damage. | | | |

ANNUAL PHYSICAL POOL LIFT TEST

A physical test of the lift's function is required when doing an annual inspection. The lift should always run through a completed cycle without a load prior to each use. Make comments and/or recommendations in the notes area below.

| INSPECTION ITEM | PASS | FAIL | N/A |
|--|------|------|-----|
| 1. With all connections secured, operate the lift through a complete cycle with and without weight to confirm the lift is functioning properly. Note any strange noises or unusual behavior. | | | |
| 2. Verify the lift was installed correctly. Is the lift free to travel in and out of the pool without hitting anything such as walls, rails, benches, etc.? | | | |
| 3. Rotate lift at least 90 degrees over the water and back again if applicable. | | | |

NOTES:

ANNUAL ELECTRONICS INSPECTION

Most electronic issues are due to poor electrical connections and/or a defective battery. Always remove the battery and place on the charger when the lift is not in use. NOTE: Even if your lift is equipped with a solar charger, it is a good idea to place the battery on the wall charger periodically or during extended periods of non-use or storage. Before testing the battery, charge overnight. A voltage meter is required for this section and a known GOOD handset controller is helpful. An Aqua Creek electronics test light is also highly recommended (order item F-01TL). Make comments and/or recommendations in the notes area below each section.

| INSPECTION ITEM | PASS | FAIL | N/A |
|--|------|------|-----|
| 1. Battery contact points are free of damage and/or corrosion. Dielectric grease is present on all contact points to prevent corrosion. ALWAYS STORE BATTERY ON THE CHARGER WHEN LIFT IS NOT IN USE! | | | |
| 2. Battery level indicator (if equipped) on control box is functioning properly when battery is installed on lift. | | | |
| 3. Using a voltmeter, check the voltage on the battery. A good battery will read between 24v and 28v DC. Note: Vito batteries will require a test cord. (F-VTC002) | | | |
| 4. Using the test light, confirm continuity through the control box by plugging the light into the control box in place of the actuator and press the buttons on the controller and the control box itself (if applicable). If the light does not light up with the handset, replace handset with a known good one and try to see if it lights up. | | | |
| 5. Once the battery is fully charged up to 24 to 28 volts, cycle the lift (up, down, rotate) counting the cycles. If the battery is in good condition, the lift should easily complete at least 15 cycles without a load. | | | |

BASIC TROUBLESHOOTING

1. Make note of the complaint, such as lift is not operating at all, lift won't return to deck, etc...
2. Make note of any noises the lift may be making, such as grinding, clicking, buzzing, beeping. Identify where the noises are coming from (the actuator, battery control box, etc...).
3. If a 'beeping' noise is coming from the battery, it is likely the battery is dead or not charged enough to operate the lift. It is designed to have an audible alarm when the battery is low. Check the battery Voltage and either charge the battery or replace it with a new one.

How to check battery Voltage:

- A. Lay the battery on a flat, dry surface. Attach Test Cable to battery.
 - B. Make sure your Volt meter is on and adjusted to DC mode.
 - C. Insert the probes of the Volt meter into the female end of the test cable.
 - D. The Volt meter will read 24 Volts or higher for a good battery. A negative Voltage indicates reversed probe polarity.
4. If the battery just came off the charger and is fully charged, check to make sure the charger is plugged in and charging properly.

This can also be done with a Volt meter:

- A. Verify the charger is plugged into a working wall outlet.
 - B. Plug in battery for at least 5 seconds
 - C. Place one probe from your Volt meter on the tip and one probe on the side of the male end of the charger. Voltage should be reading at least 27 volts DC. A negative Voltage indicates reversed probe polarity.
5. Verify the cords are properly seated in the control box ports and are not damaged or corroded. We suggest unplugging and then plug back in making sure they are seated properly.

ONCE THESE STEPS ARE COMPLETE CALL AQUA CREEK PRODUCTS AND TALK TO TECHNICAL SUPPORT FOR FURTHER ASSISTANCE OR GO ONLINE AND WATCH OUR TROUBLESHOOTING VIDEOS:

(888)687-3552

[HTTPS://AQUACREEKPRODUCTS.COM/HELP-CENTER/TROUBLESHOOTING/](https://aquacreekproducts.com/help-center/troubleshooting/)



LIMITED FIVE (5) YEAR WARRANTY

Aqua Creek Products, LLC (a.k.a. Aqua Creek) warrants to the original end user purchaser that products manufactured by Aqua Creek, when properly installed in accordance with assembly and installation instructions, and properly used and maintained, shall be free from defects in material and workmanship for a period of *five (5) years from the date of original purchase*, provided that Aqua Creek receives prompt notice in writing of any defect or failure and satisfactory proof thereof, with the following exception(s):

Exceptions:

All provided electrical components, including the linear actuator shall have the following warranty period:

Year 1-2: 100% Coverage

Year 3: 60% Coverage (Customer is responsible for 40% of replacement cost)

Year 4: 50% Coverage (Customer is responsible for 50% of replacement cost)

Year 5: 40% Coverage (Customer is responsible for 60% of replacement cost)

Hydraulic actuators and mesh slings shall have a warranty period of *one (1) year from the date of original purchase*.

Powder coat finish scratches, scrapes, corrosion, or dents from customers normal use, negligence, or abuse.

This warranty specifically excludes reimbursement for labor to remove, repair, or install the product and any shipping charges. These warranties do not cover any damages due to accident, force majeure, act of nature, misuse, abuse, negligence or failure to properly maintain any products, or normal wear and tear from day to day operations. In the event that any products are altered, repaired, or improperly installed or improperly used by anyone without the prior written approval by Aqua Creek, all warranties are void. **IMPORTANT: AMOUNT OF WEIGHT PLACED ON LIFT SHALL NOT EXCEED THE RATED LIFTING CAPACITY FOR THE LIFT. NEVER OPERATE THE LIFT UNDER LOAD IN A DRY POOL (WITH NO WATER IN THE POOL).** It is the responsibility of the lift owner to verify the weight of the patron for warranty claim purposes and to ensure that the lift is not overloaded. Non-payment for product to Aqua Creek may void warranty.

To initiate a warranty claim, the owner of an Aqua Creek product must provide the place of purchase, in writing, with a full description of the product, its serial number, the dates of purchase and installation, and the exact nature of the defect. Within thirty (30) days after receipt of a written warranty claim by Aqua Creek, and barring any unforeseen delays, the place of purchase will be notified of Aqua Creek's decision regarding the claim.

If requested by Aqua Creek, any defective product must be returned, freight prepaid by customer, to Aqua Creek's designated factory location or duly appointed distributor for inspection and/or repair. Aqua Creek will, at its option, repair or replace the failed or defective item, and deliver the repaired product or replacement to the customer. All freight charges are the responsibility of the customer. Products returned to Aqua Creek for which Aqua Creek provides replacement under this limited warranty shall become the property of Aqua Creek. A new warranty period shall NOT be established for the repaired or replaced products. Such products shall remain under warranty only for the remainder of the original warranty period on the original products purchased.

This written limited warranty constitutes the final, complete and exclusive statement of warranty terms. No person or organization is authorized to make any other specific or implied warranties or representations on behalf of Aqua Creek.

THE WARRANTIES SET FORTH HEREIN ARE IN LIEU OF ALL OTHER WARRANTIES, EXPRESSED OR IMPLIED, WHICH ARE HEREBY DISCLAIMED AND EXCLUDED, INCLUDING WITHOUT LIMITATION ANY WARRANTY OF MERCHANTABILITY OR FITNESS FOR A PARTICULAR PURPOSE OR USE.

THE SOLE AND EXCLUSIVE REMEDIES FOR BREACH OF ANY AND ALL WARRANTIES WITH RESPECT TO THE PRODUCTS SHALL BE LIMITED TO REPAIR OR REPLACEMENT AT AQUA CREEK'S DESIGNATED FACTORY LOCATION, OR DULY APPOINTED DISTRIBUTOR, OR IN PLACE AT AQUA CREEK'S OPTION. IN NO EVENT SHALL AQUA CREEK'S LIABILITY EXCEED THE ENTIRE AMOUNT PAID TO AQUA CREEK BY THE ORIGINAL PURCHASER FOR THE FAILED OR DEFECTIVE PRODUCT. IN NO EVENT SHALL AQUA CREEK PRODUCTS, LLC BE LIABLE FOR ANY INCIDENTAL, CONSEQUENTIAL, SPECIAL, INDIRECT, PUNITIVE OR EXEMPLARY DAMAGES OR LOST PROFITS FROM ANY BREACH OF THIS LIMITED WARRANTY OR OTHERWISE.

THIS WARRANTY GIVES YOU SPECIFIC LEGAL RIGHTS AND YOU MAY ALSO HAVE OTHER RIGHTS, WHICH MAY VARY FROM STATE TO STATE. SOME STATES DO NOT ALLOW THE EXCLUSION OR LIMITATION OF INCIDENTAL, SPECIAL OR CONSEQUENTIAL DAMAGES, SO SOME OF THE ABOVE LIMITATIONS OR EXCLUSIONS MAY NOT APPLY TO YOU.

BASIC TROUBLESHOOTING

1. Make note of the complaint, such as lift is not operating at all, lift won't return to deck, etc...
2. Make note of any noises the lift may be making, such as grinding, clicking, buzzing, beeping. Identify where the noises are coming from (the actuator, battery control box, etc...).
3. If a 'beeping' noise is coming from the battery, it is likely the battery is dead or not charged enough to operate the lift. It is designed to have an audible alarm when the battery is low. Check the battery Voltage and either charge the battery or replace it with a new one.

How to check battery Voltage:

- A. Lay the battery on a flat, dry surface.
 - B. Make sure your Volt meter is on and adjusted to DC mode.
 - C. Place the Volt meter probes into the test cable terminals.
 - D. The Volt meter will read 24 Volts or higher for a good battery. A negative Voltage indicates reversed probe polarity.
 - E. Sometimes it will have sufficient voltage but insufficient amperage. If so, the battery can be taken into a battery store to have an 8amp load test done to check for proper amperage.
4. If the battery just came off the charger and is fully charged, check to make sure the charger is plugged in and charging properly.

This can also be done with a Volt meter:

- A. Verify the charger is plugged into a working wall outlet.
 - B. Place one probe from your Volt meter on the left metal prong on the charger and the other probe on the right metal prong of the charger. Voltage should be reading at least 27 volts DC. A negative Voltage indicates reversed probe polarity.
5. Verify the cords are properly seated in the control box ports and are not damaged or corroded. We suggest unplugging and then plug back in making sure they are seated properly. Clean any corrosion off of the battery terminals and plugs if there is any.
 6. If there are black or grey pieces surrounding the metal tabs on the control box, remove them.

ONCE THESE STEPS ARE COMPLETE CALL AQUA CREEK PRODUCTS AND TALK TO TECHNICAL SUPPORT FOR FURTHER ASSISTANCE OR GO ONLINE AND WATCH OUR TROUBLESHOOTING VIDEOS:

(888)687-3552

[HTTPS://AQUACREEKPRODUCTS.COM/HELP-CENTER/TROUBLESHOOTING/](https://aquacreekproducts.com/help-center/troubleshooting/)

