

THE LARGEST UNTAPPED MARKET
IN AMERICA

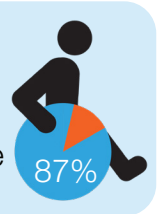
 **1 in 4**
Adults in the United States have a disability.

People with disabilities represent America's **largest minority group.**



 The total disposable income of adults in the United States with disabilities is about **\$490 Billion**

Consumers Value Inclusion
87% prefer to do business with companies that support people with disabilities.



DID YOU KNOW?
Federal and State **tax incentives** are available to encourage ADA Compliance.

UNIQUE
BENEFITS

 **CUSTOM COLORS**
Choose from a variety of standard color options, or customize your own!

 **SOLAR POWER**
The first and only manufacturer in North America to offer solar compatible pool lifts.

 **5 YEARS WARRANTY**
TOP WARRANTIES
Offering the best warranties in our industry, because we stand behind the products we make.

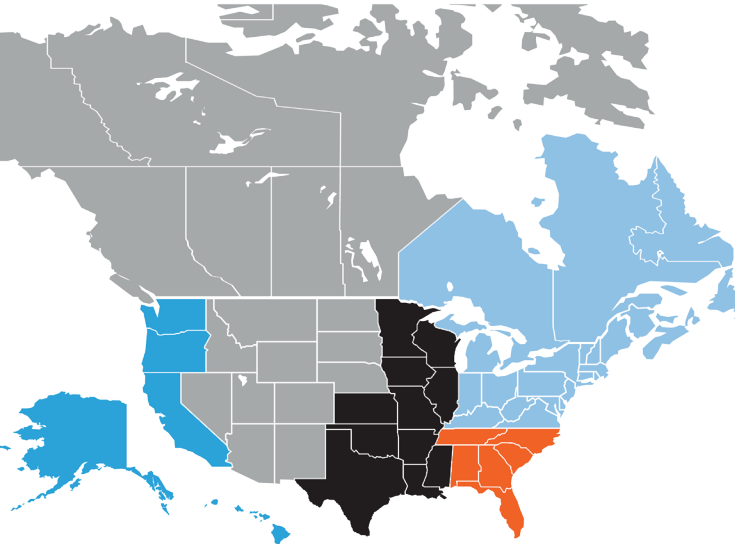
 **UL CERTIFIED**
We carry the largest selection of UL Certified pool lifts available on the market today.

 **ADA COMPLIANT**
The first pool lift manufacturer to have our lifts independently verified to meet ADA regulations.

 I think the biggest key to our success is our people. Aqua Creek has an incredible team of **dedicated and professional employees** who genuinely care about building exceptional products and providing an improved quality of life to those who use them.
-Bruce Giffin, VP of Sales & Marketing



OUR TEAM



SALES TERRITORIES

PACIFIC REGION
(406) 541-8985
salespacific@aquacreek.com

MOUNTAIN REGION
(406) 541-8429
salesmountain@aquacreek.com

CENTRAL REGION
(406) 541-8490
salescentral@aquacreek.com

NORTHEAST REGION
(406) 541-8984
salesnortheast@aquacreek.com


SOUTHEAST REGION
(406) 541-8311
salessoutheast@aquacreek.com


CUSTOMER SERVICE
(406) 549-0769
customerservice@aquacreek.com
aquacreek.com


HANDCRAFTED
 **IN MISSOULA**
MONTANA
EST. 2002



STAY IN
TOUCH

 9889 Garrymore Lane
Missoula, Montana 59808

 Local | 406.549.0769
Toll Free | 888.687.3552

 www.aquacreek.com
sales@aquacreek.com



Scan to learn more!

**Aqua Creek Products**



POOL LIFT
GUIDE

INNOVATIVE
ACCESS
SOLUTIONS

PRO POOL Series

Non-rotational lifts with minimal footprint, designed for in-ground pools and spas with flat decks.



RANGER 2

- ADA Compliant & UL Certified
- 350 lb (160 kg) weight capacity
- In-ground applications



PORTABLE PRO 2

- CE Certified
- 350 lb (160 kg) weight capacity
- In-ground applications



ADMIRAL

- ADA Compliant & UL Certified
- 450 lb (204 kg) weight capacity
- In-ground applications

MIGHTY Series

Our newest series of compact rotational lifts providing a full 360° of rotation, designed for most in-ground pools. Pedestal options available for higher clearances.



MIGHTY 400

- ADA Compliant & UL Certified
- 400 lb (181 kg) weight capacity
- In-ground & partially raised pools



MIGHTY 600

- ADA Compliant & UL Certified
- 600 lb (272 kg) weight capacity
- In-ground & partially raised pools



MIGHTY VOYAGER

- ADA Compliant & UL Certified
- 325 lb (147 kg) weight capacity
- In-ground & partially raised pools

REVOLUTION Series

Ideal for in-ground, partially recessed, and some above-ground pools. 360° of rotation, with our biggest setbacks and water drafts yet.



SCOUT EXCEL

- ADA Compliant & UL Certified
- 375 lb (170 kg) weight capacity
- In-ground & partially raised pools



REVOLUTION XL

- ADA Compliant & UL Certified
- 500 lb (226 kg) weight capacity
- In-ground & partially raised pools



REVOLUTION XL DEEP DRAFT

- ADA Compliant & UL Certified
- 400 lb (181 kg) weight capacity
- In-ground & partially raised pools

SPA Series

Dedicated above-ground lifts for raised pools and spas, with clearances up to 68" and 360° of rotation.



NEBULA

- Requires assistance from others
- 400 lb (181 kg) weight capacity
- Above-ground applications



NEPTUNE

- ADA Compliant & UL Certified
- 400 lb (181 kg) weight capacity
- Above-ground applications



NANO

- Limited overhead clearance?
- Smaller (NANO) versions of the Spa Series lifts available!

EZ Series

Versatile and economical lifts that rotate manually. Provides access to many types of pools and spas, and even boat docks!



POWER EZ 2

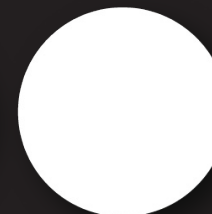
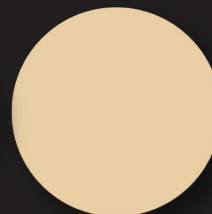
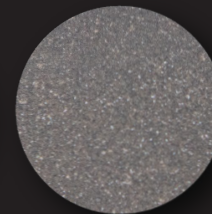
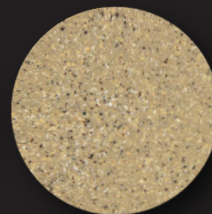
- Requires assistance from others
- 400 lb (181 kg) weight capacity
- In-ground & partially raised applications

Looking For More Information?

Scan Here To View Our Full Product Catalog!



COLOR OPTIONS



— PLASTICS —

— POWDER COAT —



Looking for something outside of our standard color options?

With our in-house powder coat professionals, the sky is the limit! Complete your pool design with beautiful color matched powder coat colors!