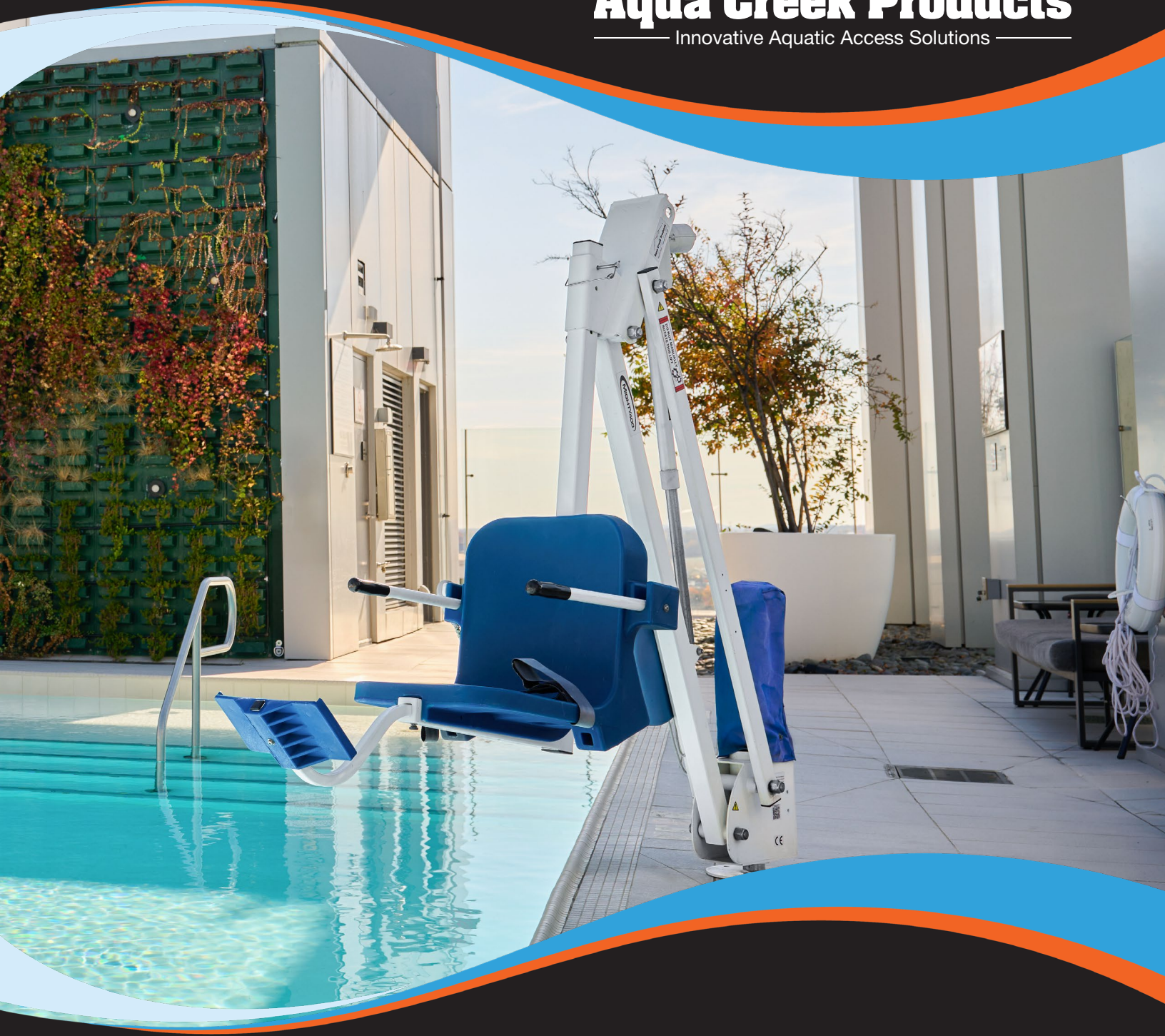




Aqua Creek Products
— Innovative Aquatic Access Solutions —



27TH EDITION

FULL PRODUCT CATALOG

POOL LIFTS • POOL RAILS • POOL LADDERS • AQUATIC ACCESS AND TRAINING

FROM THE OWNER

To Our Valued Family, Friends and Partners,

We stand at a moment where each step up the ladder carries more meaning than the last. Our path has had its bends and challenges, but when I look back, I'm reminded of the steady determination that has brought us here and the pride I feel in the work we do.

This year marks many important milestones for us. Achieving ISO 9001 certification formalizes what many of you already know: quality is not an aspiration here, it's our operating standard. ISO represents disciplined processes, continuous improvement and a promise that the products you receive meet the same level of consistency, every time.

I'm also proud to introduce our largest catalog to date. The addition of rails and ladders expands our offerings in a meaningful way. While these products are new to Aqua Creek, they carry the same expectations of reliability and on-time delivery that define our brand.

This has also been a meaningful year for me personally. Being recognized as a 2025 PoolPro Power Woman was an honor, but stepping into the role of majority owner stands out even more. Aqua Creek is now officially a female-owned and operated company. I hold that responsibility with a deep sense of pride. It reflects not only my journey, but the strength, resilience and commitment that define this team and the customers we serve.

As we grow into new markets and broaden our offerings, our mission remains steady: to be a trusted partner in delivering innovative aquatic access, dependable products and service. We've climbed far, and the view ahead is full of opportunity.

Thank you for your continued trust and support.

Sincerely,



Krystal G.

Krystal Guilhemotonia
Owner, CEO

TABLE OF CONTENTS

05 TRUPRO RAILS

- 06 Anchors & Hardware
- 07 Pretzel Bend Rails
- 08 Pacific Pretzel Bend Rails
- 09 Figure 4 Rails
- 10 Adjustable Figure 4 Rails
- 11 2 Bend Stair Rail
- 12 3 Bend Stair Rail
- 13 3 Bend Deck Rail
- 14 4 Bend Deck Rail
- 15 Long Reach Deck Rail
- 16 ADA Grab Rails

17 TRUPRO LADDERS

- 18 Standard Pool Ladder (2-5 Tread)
- 19 Cross-Braced Pool Ladder (2-5 Tread)

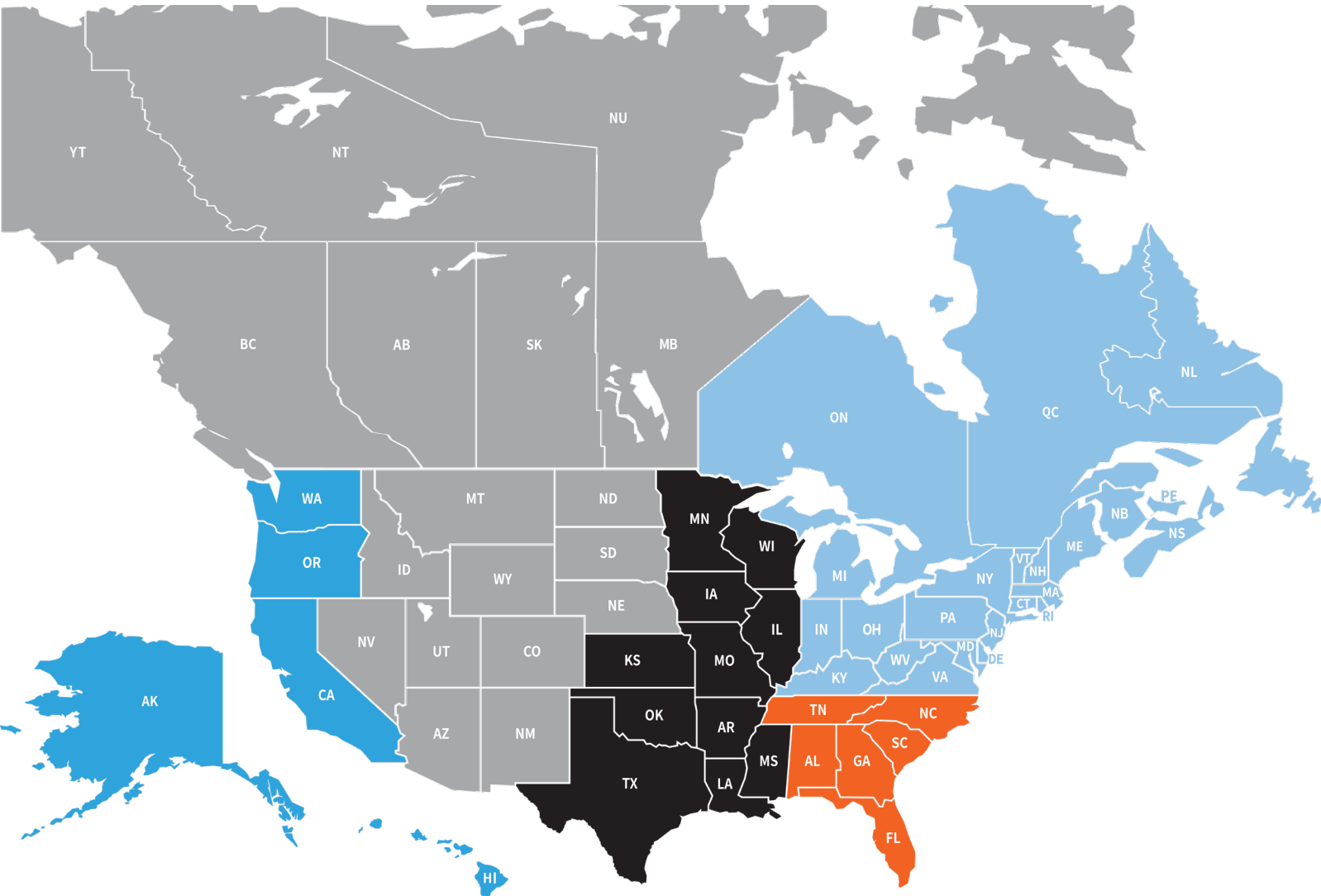
21 POOL LIFTS

- 22 Pro Pool Series
- 25 Mighty Series
- 28 Revolution Series
- 30 Spa Series
- 32 EZ Series

33 ACCESS & TRAINING

- 34 Pool Access Chair
- 34 Aqua Walker
- 35 Swim Training Platform

SALES TERRITORY MAP



REGIONAL SALES ASSOCIATES

PACIFIC REGION

Phone:
(406) 541-8985

Email:
salespacific@
aquacreek.com

MOUNTAIN REGION

Phone:
(406) 541-8429

Email:
salesmountain@
aquacreek.com

CENTRAL REGION

Phone:
(406) 541-8490

Email:
salescentral@
aquacreek.com

NORTHEAST REGION

Phone:
(406) 541-8984

Email:
salesnortheast@
aquacreek.com

SOUTHEAST REGION

Phone:
(406) 541-8311

Email:
salessoutheast@
aquacreek.com

WE LOVE TO HEAR FROM YOU!

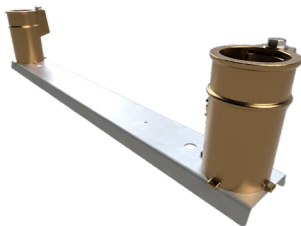
Contact any of our friendly support staff directly.

RAILS & LADDERS



ANCHORS & HARDWARE

TRUPRO



WEDGE ANCHOR

Part Number	Description	Inner Diameter	Depth
WA-XX194Z	WEDGE ANCHOR	1.90"	4"
WA-XX196Z	WEDGE ANCHOR	1.90"	6"
WA-XX154Z	WEDGE ANCHOR	1.50"	4"
WA-XX156Z	WEDGE ANCHOR	1.50"	6"

STANCHION ANCHOR

Part Number	Description	Inner Diameter	Depth
SA-XX156Z	STANCHION ANCHOR	1.50"	6"
SA-XX196Z	STANCHION ANCHOR	1.90"	6"

CHANNEL ANCHOR

Part Number	Description	Inner Diameter	Depth	Length
AC-08194ZMSG	ANCHOR CHANNEL KIT	1.90"	4"	08.00"
AC-20194ZMSG	ANCHOR CHANNEL KIT	1.90"	4"	20.00"
AC-08154ZMSG	ANCHOR CHANNEL KIT	1.50"	4"	08.00"
AC-20154ZMSG	ANCHOR CHANNEL KIT	1.50"	4"	20.00"

ESCUTCHEON PLATE

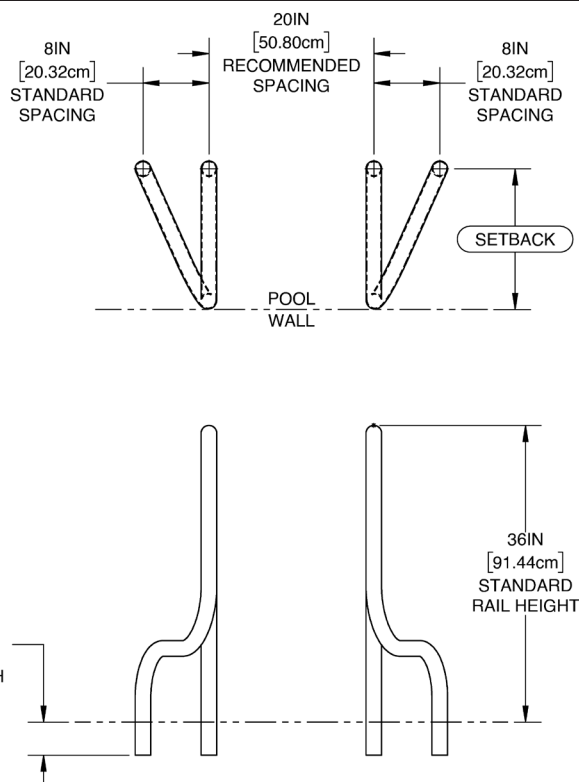
Part Number	Description	Inner Diameter	Outer Diameter	Material
EP-XX19454	ESCUTCHEON PLATE	1.90"	4.50"	316SS
EP-XX15454	ESCUTCHEON PLATE	1.50"	4.50"	316SS
SE-XX15456	SPLIT ESCUTCHEON PLATE	1.50"	4.125"	316SS

STANCHION POST

Part Number	Description	Height	Outer Diameter	Material
SP-54191454	STANCHION POST	54"	1.90"	304SS
SP-54191456	STANCHION POST	54"	1.90"	316SS
SP-96191454	STANCHION POST	96"	1.90"	304SS
SP-96191456	STANCHION POST	96"	1.90"	316SS
SP-SLRNG	STANCHION POST SLIDING RING	N/A	N/A	316SS

PRETZEL BEND RAILS

TRUPRO



DESCRIPTION:

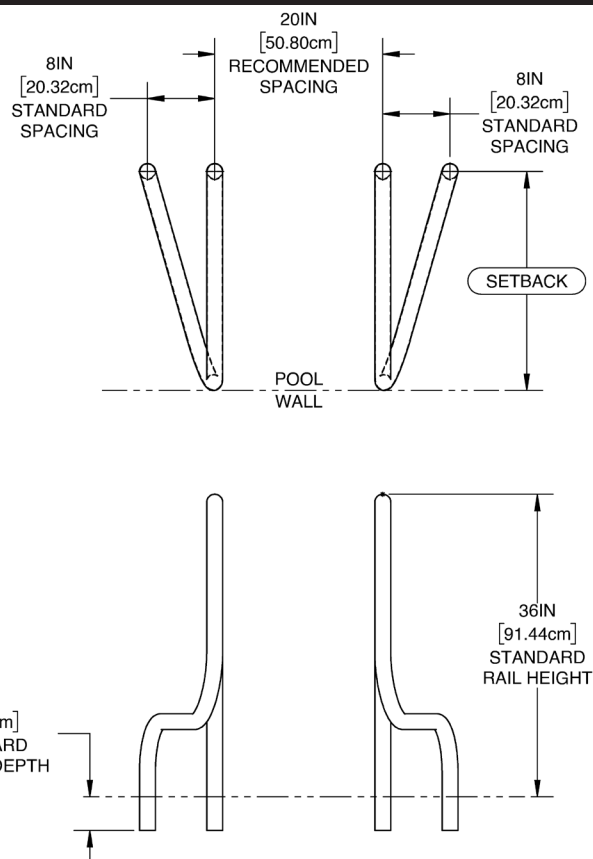
- Constructed from corrosion-resistant stainless steel for long-lasting durability.
- Marine-grade stainless option available for saltwater or heavily chlorinated pools.
- Smooth pretzel bend provides a continuous, ergonomic grip.
- Fully deck-mounted with no pool overhang for unobstructed swim zones.
- Meets U.S. ADA Standards for Accessible Design when installed with specified anchors.
- Polished stainless finish offers a sleek, modern look and easy cleaning.
- Sold in pairs. Anchors and escutcheons sold separately.

PRETZEL BEND RAILS

Part Number	Setback	OD	Wall	Material
TGR-PB17-141	17.00"	1.90"	.065	304LSS
TGR-PB17-241	17.00"	1.90"	.109	304LSS
TGR-PB17-461	17.00"	1.50"	.120	316LSS
TGR-PB26-141	26.00"	1.90"	.065	304LSS
TGR-PB26-241	26.00"	1.90"	.109	304LSS
TGR-PB26-461	26.00"	1.50"	.120	316LSS
TGR-PB30-141	30.00"	1.90"	.065	304LSS
TGR-PB30-241	30.00"	1.90"	.109	304LSS
TGR-PB30-461	30.00"	1.50"	.120	316LSS

PACIFIC PRETZEL BEND RAILS

TRUPRO



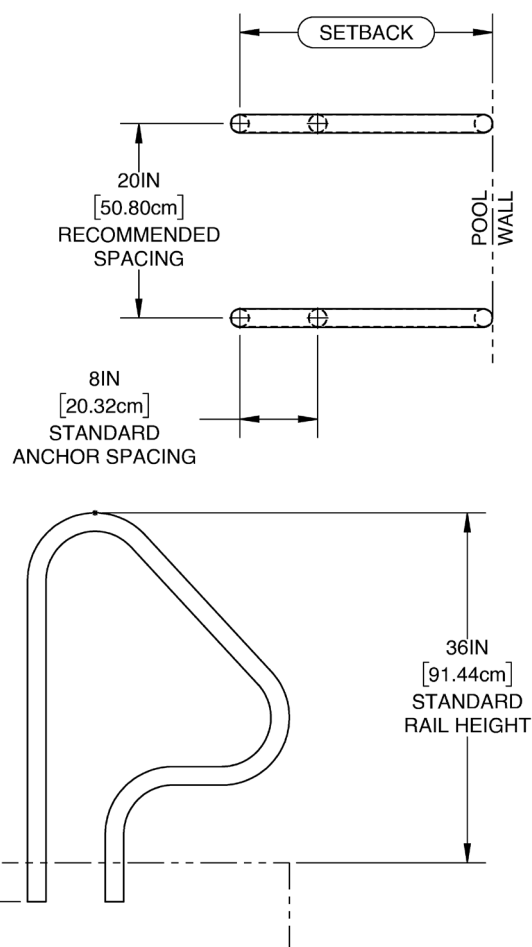
DESCRIPTION:

- Constructed from corrosion-resistant stainless steel for long-lasting durability.
- Marine-grade stainless option available for saltwater or heavily chlorinated pools.
- Pacific Pretzel bend adds an extra curve for enhanced grip comfort and stability.
- Fully deck-mounted with no pool overhang for unobstructed swim zones.
- Meets U.S. ADA Standards for Accessible Design when installed with specified anchors.
- Polished stainless finish offers a sleek, modern look and easy cleaning.
- Sold in pairs. Anchors and escutcheons sold separately.

PACIFIC PRETZEL BEND RAILS

Part Number	Setback	OD	Wall	Material
TGR-PP26-141	26.00"	1.90"	.065	304LSS
TGR-PP26-241	26.00"	1.90"	.109	304LSS
TGR-PP26-461	26.00"	1.50"	.120	316LSS
TGR-PP30-141	30.00"	1.90"	.065	304LSS
TGR-PP30-241	30.00"	1.90"	.109	304LSS
TGR-PP30-461	30.00"	1.50"	.120	316LSS

FIGURE 4 RAILS TRUPRO



DESCRIPTION:

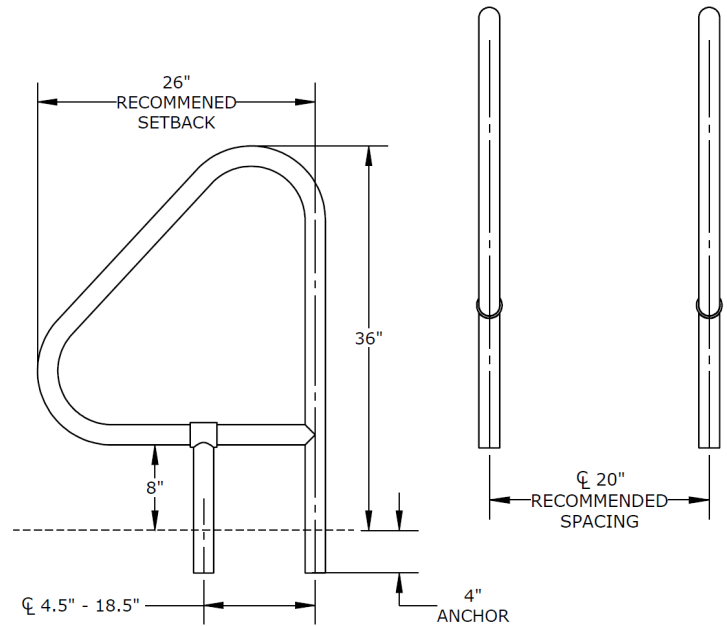
- Constructed from corrosion-resistant stainless steel for long-lasting durability.
- Marine-grade stainless option available for saltwater or heavily chlorinated pools.
- Space-saving Figure 4 design mounts entirely on the deck to maximize swim zone.
- Smooth, ergonomic contour aligns with natural hand movement.
- Meets U.S. ADA Standards for Accessible Design when installed with specified anchors.
- Polished stainless finish offers a sleek, modern look and easy cleaning.
- Sold in pairs. Anchors and escutcheons sold separately.

FIGURE 4 RAILS

Part Number	Setback	OD	Wall	Material
TGR-F426-141	26.00"	1.90"	.065	304LSS
TGR-F426-241	26.00"	1.90"	.109	304LSS
TGR-F426-461	26.00"	1.50"	.120	316LSS
TGR-F430-141	30.00"	1.90"	.065	304LSS
TGR-F430-241	30.00"	1.90"	.109	304LSS
TGR-F430-461	30.00"	1.50"	.120	316LSS

ADJUSTABLE FIGURE 4 RAILS

TRUPRO



DESCRIPTION:

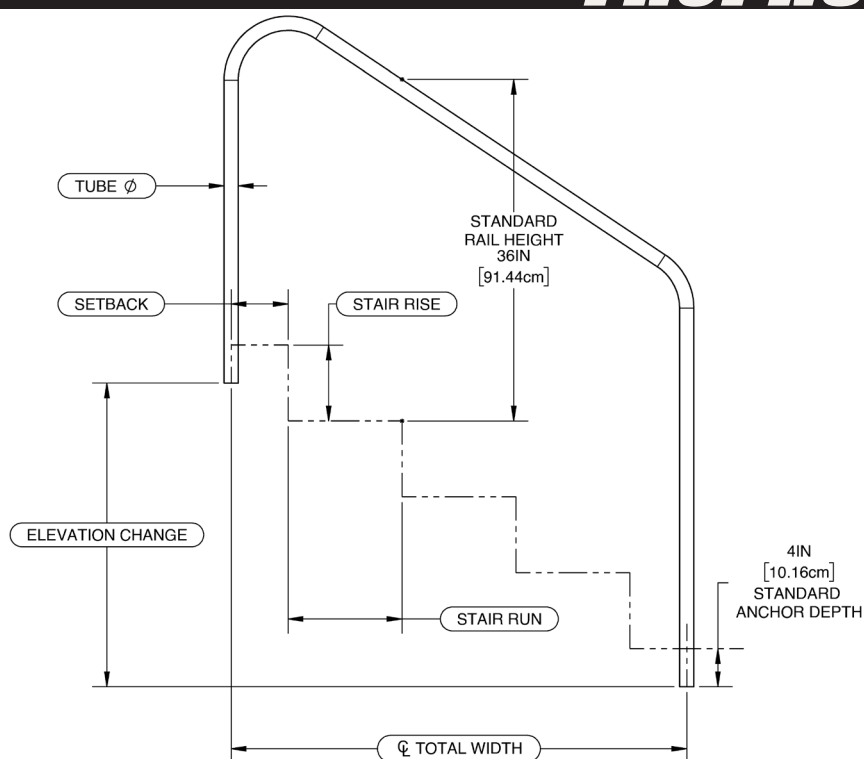
- Constructed from corrosion-resistant stainless steel for long-lasting durability.
- Marine-grade stainless option available for saltwater or heavily chlorinated pools.
- Adjustable design features one movable leg to accommodate various anchor distances.
- Smooth, ergonomic contour aligns with natural hand movement.
- Meets U.S. ADA Standards for Accessible Design when installed with specified anchors.
- Polished stainless finish offers a sleek, modern look and easy cleaning.
- Sold in pairs. Anchors and escutcheons sold separately.

ADJUSTABLE FIGURE 4 RAILS

Part Number	Setback	OD	Wall	Material
TGR-A426-141	26.00"	1.90"	.065	304LSS
TGR-A426-241	26.00"	1.90"	.109	304LSS
TGR-A426-461	26.00"	1.50"	.120	316LSS

2 BEND STAIR RAIL

TRUPRO



DESCRIPTION:

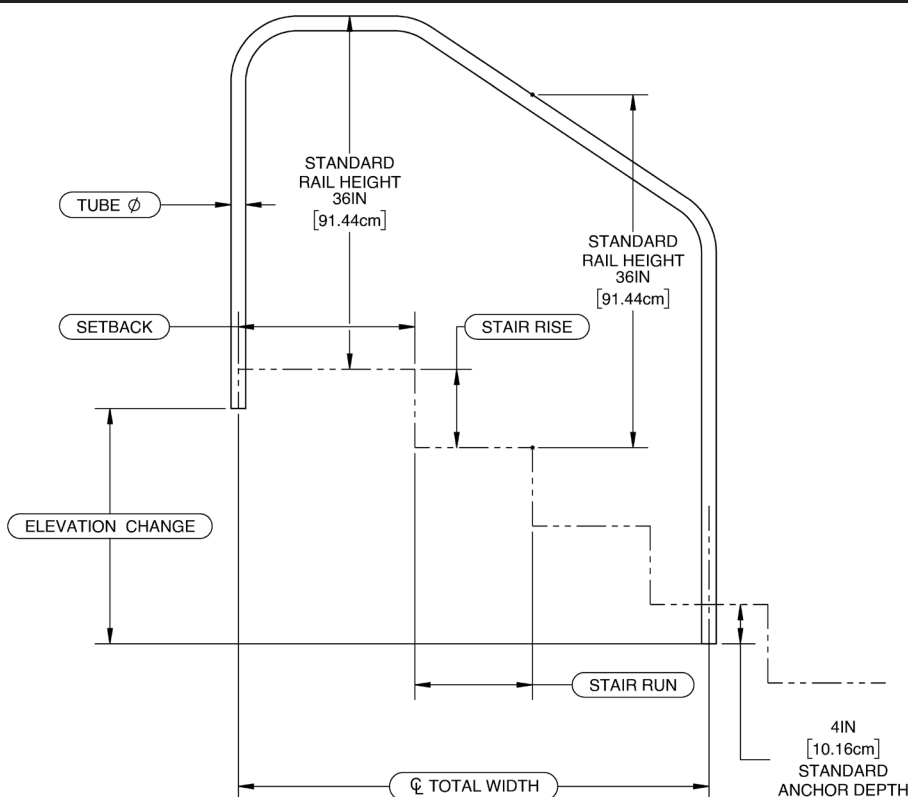
- Constructed from corrosion-resistant stainless steel for long-lasting durability.
- Marine-grade stainless option available for saltwater or heavily chlorinated pools.
- Two smooth 6-inch radius bends provide a natural gripping angle.
- Designed for pool and spa steps in residential or commercial settings.
- Meets U.S. ADA Standards for Accessible Design when installed with specified anchors.
- Polished stainless finish offers a sleek, modern look and easy cleaning.
- Sold individually. Anchors and escutcheons sold separately.

2 BEND STAIR RAIL

Part Number	Total Width	OD	Wall	Material
TSR-2B48-141	48.00"	1.90"	.065	304LSS
TSR-2B48-241	48.00"	1.90"	.109	304LSS
TSR-2B48-461	48.00"	1.50"	.120	316LSS
TSR-2B60-141	60.00"	1.90"	.065	304LSS
TSR-2B60-241	60.00"	1.90"	.109	304LSS
TSR-2B60-461	60.00"	1.50"	.120	316LSS
TSR-2B72-141	72.00"	1.90"	.065	304LSS
TSR-2B72-241	72.00"	1.90"	.109	304LSS
TSR-2B72-461	72.00"	1.50"	.120	316LSS

3 BEND STAIR RAIL

TRUPRO



DESCRIPTION:

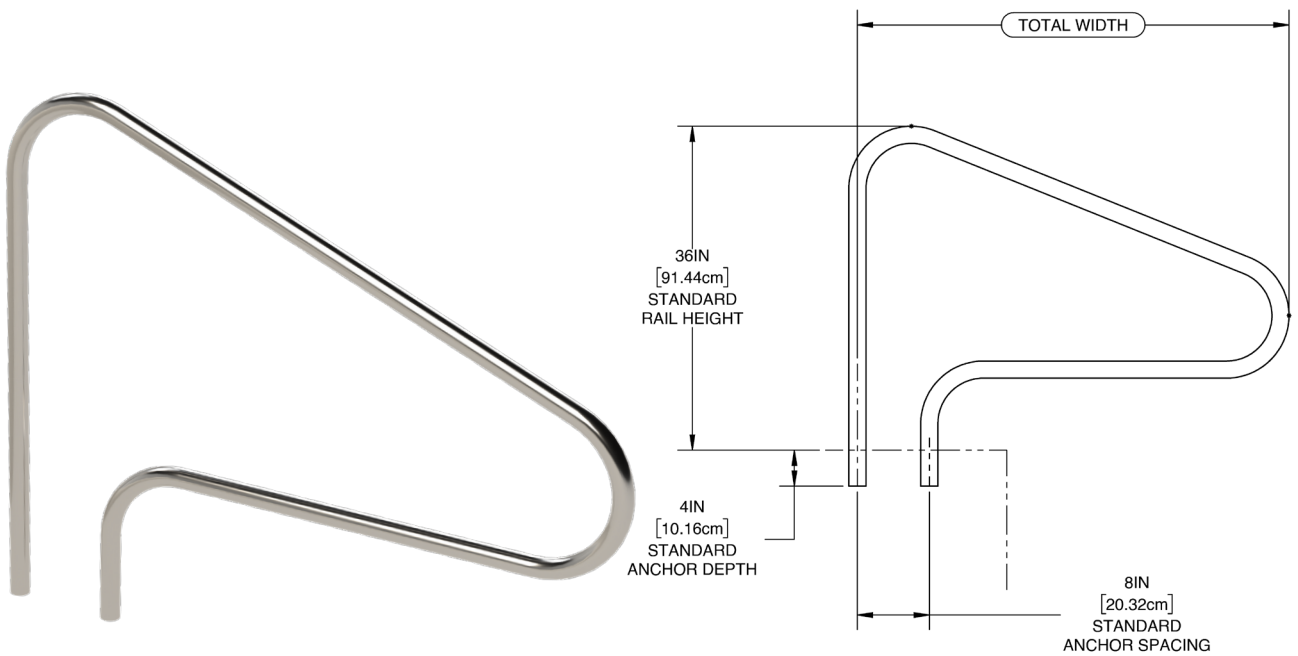
- Constructed from corrosion-resistant stainless steel for long-lasting durability.
- Marine-grade stainless option available for saltwater or heavily chlorinated pools.
- Three-bend design runs parallel to deck and stairs for enhanced stability.
- Designed for pool and spa steps in residential or commercial settings.
- Meets U.S. ADA Standards for Accessible Design when installed with specified anchors.
- Polished stainless finish offers a sleek, modern look and easy cleaning.
- Sold individually. Anchors and escutcheons sold separately.

3 BEND STAIR RAIL

Part Number	Total Width	OD	Wall	Material
TSR-3B48-141	48.00"	1.90"	.065	304LSS
TSR-3B48-241	48.00"	1.90"	.109	304LSS
TSR-3B48-461	48.00"	1.50"	.120	316LSS
TSR-3B60-141	60.00"	1.90"	.065	304LSS
TSR-3B60-241	60.00"	1.90"	.109	304LSS
TSR-3B60-461	60.00"	1.50"	.120	316LSS
TSR-3B72-141	72.00"	1.90"	.065	304LSS
TSR-3B72-241	72.00"	1.90"	.109	304LSS
TSR-3B72-461	72.00"	1.50"	.120	316LSS

3 BEND DECK RAIL

TRUPRO



DESCRIPTION:

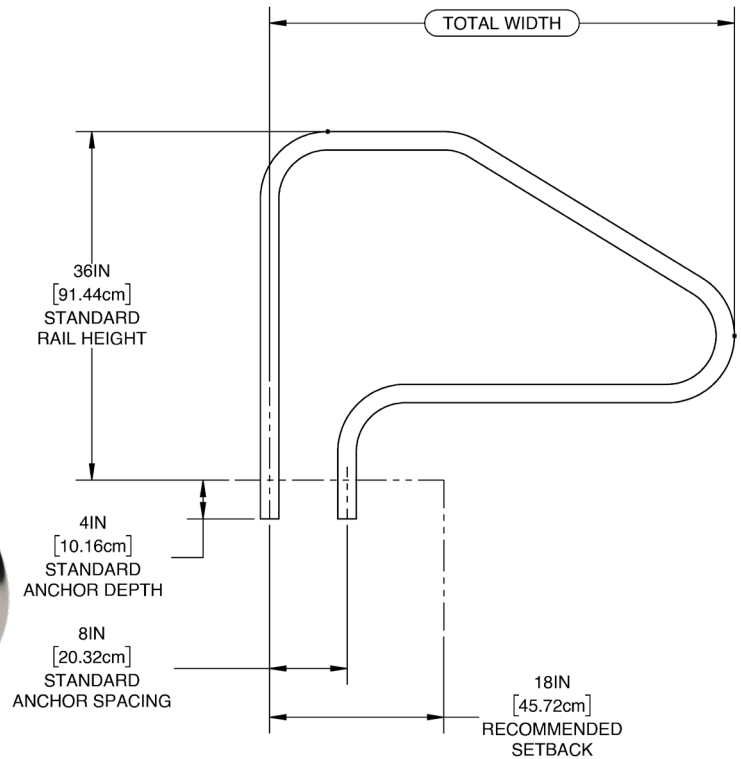
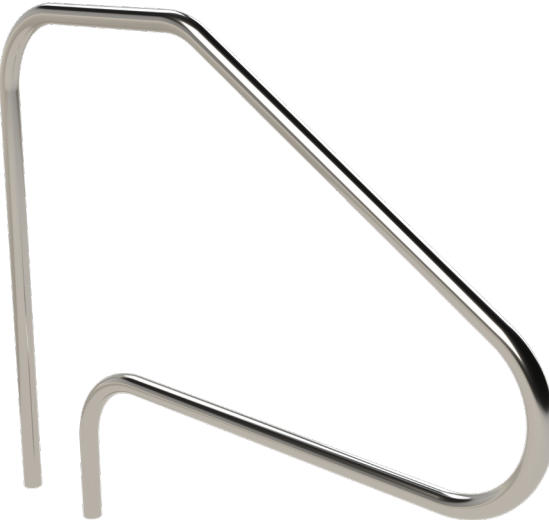
- Constructed from corrosion-resistant stainless steel for long-lasting durability.
- Marine-grade stainless option available for saltwater or heavily chlorinated pools.
- Smooth three-bend contour provides a comfortable grip for safe entry and exit.
- Deck-mounted design extends over the pool edge for secure handhold placement.
- Meets U.S. ADA Standards for Accessible Design when installed with specified anchors.
- Polished stainless finish offers a sleek, modern look and easy cleaning.
- Sold individually. Anchors and escutcheons sold separately.

3 BEND DECK RAIL

Part Number	Total Width	OD	Wall	Material
TDM-3B48-141	48.00"	1.90"	.065	304LSS
TDM-3B48-241	48.00"	1.90"	.109	304LSS
TDM-3B48-461	48.00"	1.50"	.120	316LSS
TDM-3B60-141	60.00"	1.90"	.065	304LSS
TDM-3B60-241	60.00"	1.90"	.109	304LSS
TDM-3B60-461	60.00"	1.50"	.120	316LSS

4 BEND DECK RAIL

TRUPRO



DESCRIPTION:

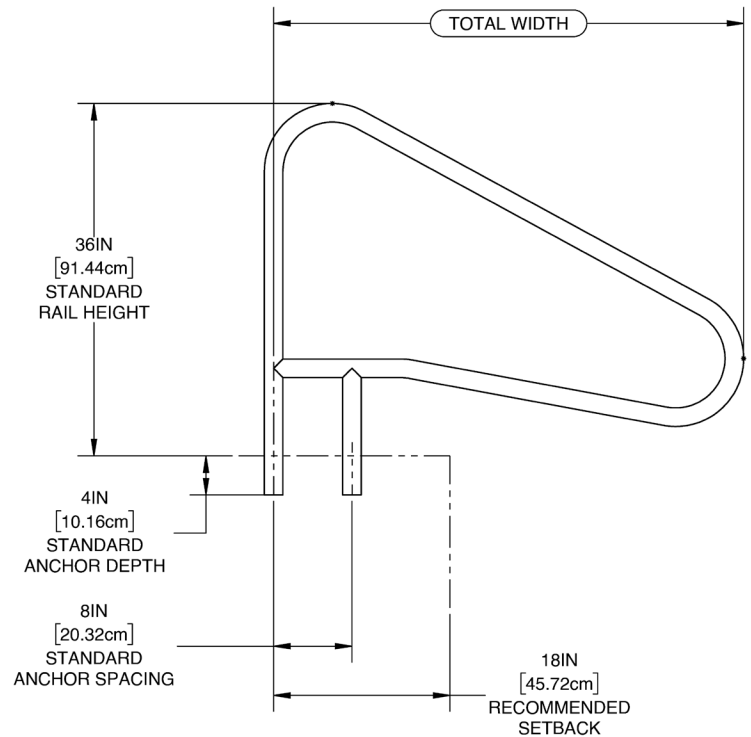
- Constructed from corrosion-resistant stainless steel for long-lasting durability.
- Marine-grade stainless option available for saltwater or heavily chlorinated pools.
- Four-bend design includes a flat deck segment for smooth transition from deck to pool.
- Extends over the pool edge to provide secure support exactly where swimmers need it.
- Meets U.S. ADA Standards for Accessible Design when installed with specified anchors.
- Polished stainless finish offers a sleek, modern look and easy cleaning.
- Sold individually. Anchors and escutcheons sold separately.

4 BEND DECK RAIL

Part Number	Total Width	OD	Wall	Material
TDM-4B48-141	48.00"	1.90"	.065	304LSS
TDM-4B48-241	48.00"	1.90"	.109	304LSS
TDM-4B48-461	48.00"	1.50"	.120	316LSS
TDM-4B60-141	60.00"	1.90"	.065	304LSS
TDM-4B60-241	60.00"	1.90"	.109	304LSS
TDM-4B60-461	60.00"	1.50"	.120	316LSS

LONG REACH DECK RAIL

TRUPRO



DESCRIPTION:

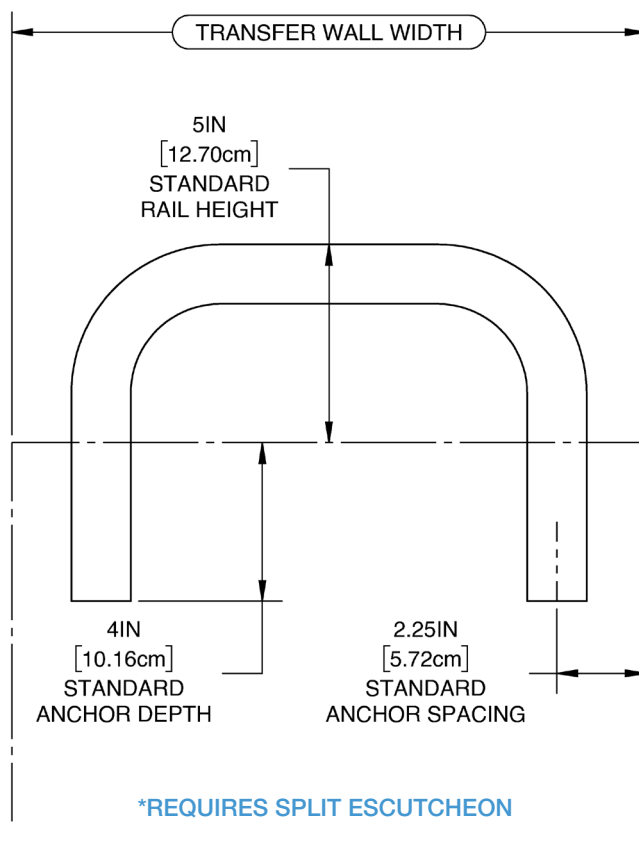
- Constructed from corrosion-resistant stainless steel for long-lasting durability.
- Marine-grade stainless option available for saltwater or heavily chlorinated pools.
- Sturdier build than standard 3-bend rails for enhanced stability and performance.
- Deck-mounted design extends over the pool edge for support where needed.
- Meets U.S. ADA Standards for Accessible Design when installed with specified anchors.
- Polished stainless finish offers a sleek, modern look and easy cleaning.
- Sold individually. Anchors and escutcheons sold separately.

LONG REACH DECK RAIL

Part Number	Total Width	OD	Wall	Material
TDM-LR48-141	48.00"	1.90"	.065	304LSS
TDM-LR48-241	48.00"	1.90"	.109	304LSS
TDM-LR48-461	48.00"	1.50"	.120	316LSS
TDM-LR60-141	60.00"	1.90"	.065	304LSS
TDM-LR60-241	60.00"	1.90"	.109	304LSS
TDM-LR60-461	60.00"	1.50"	.120	316LSS

ADA GRAB RAILS

TRUPRO



DESCRIPTION:

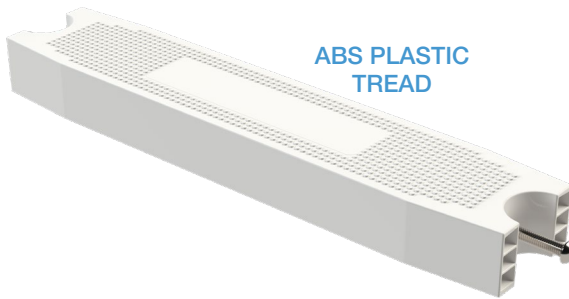
- Constructed from corrosion-resistant stainless steel for long-lasting durability.
- Marine-grade stainless option available for saltwater or heavily chlorinated pools.
- Available with and without flange.
- Designed for use on elevated transfer walls to support safe, independent pool entry.
- Anchors to the top surface for a stable and secure handhold.
- Meets U.S. ADA Standards for Accessible Design when installed with specified anchors.
- Polished stainless finish offers a sleek, modern look and easy cleaning.
- Sold individually. Anchors and escutcheons sold separately.

ADA GRAB RAILS

WITH FLANGE NO FLANGE

Part Number	Width	OD	Wall	Material
TTR-NF12-461	12.00"	1.50"	.120	316LSS
TTR-NF14-461	14.00"	1.50"	.120	316LSS
TTR-NF16-461	16.00"	1.50"	.120	316LSS
TTR-NF18-461	18.00"	1.50"	.120	316LSS
TTR-FG12-461	12.00"	1.50"	.120	316LSS
TTR-FG14-461	14.00"	1.50"	.120	316LSS
TTR-FG16-461	16.00"	1.50"	.120	316LSS
TTR-FG18-461	18.00"	1.50"	.120	316LSS

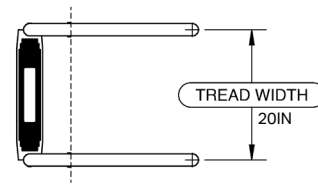
POOL LADDERS TRUPRO



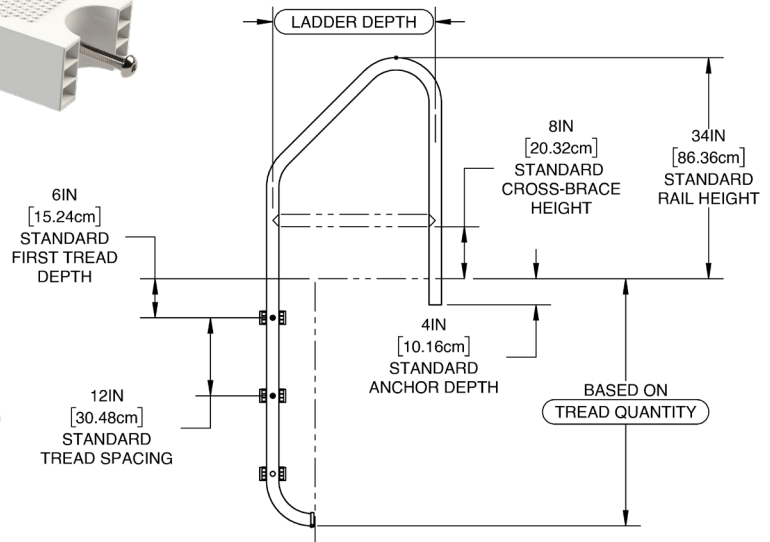
ABS PLASTIC
TREAD



STAINLESS STEEL
TREAD

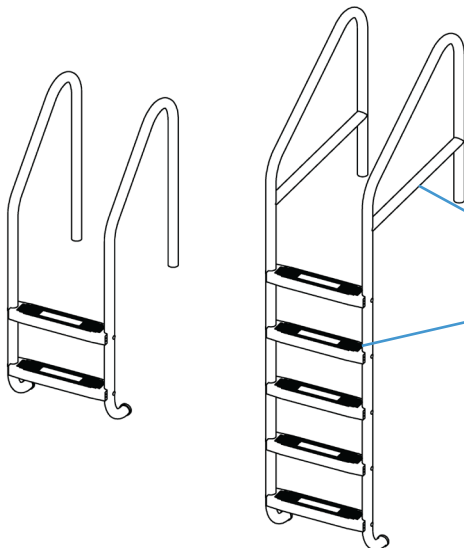


TREAD WIDTH
20IN



DESCRIPTION:

- Constructed from corrosion-resistant stainless steel for long-lasting durability.
- Marine-grade stainless option available for saltwater or heavily chlorinated pools.
- Designed for safe and stable pool entry in both commercial and residential settings.
- Requires only two wedge anchors for secure installation.
- Meets U.S. ADA Standards for Accessible Design when installed with specified anchors.
- Polished stainless finish offers a sleek, modern look and easy cleaning.
- Sold individually. Anchors and escutcheons sold separately.



ADDITIONAL OPTIONS:

- Standard and Cross-braced ladder versions.
- Available with 2 to 5 treads.
- Multiple tread styles available.
- Custom configurations available upon request.

POOL LADDERS

TRUPRO

Standard Pool Ladder (2 Tread, 20" ABS)



Part Number	Depth	OD	Wall	Material
TSL-241-141	25.00"	1.90"	.065	304LSS
TSL-241-241	25.00"	1.90"	.109	304LSS
TSL-241-461	25.00"	1.50"	.120	316LSS
TSL-242-141	27.00"	1.90"	.065	304LSS
TSL-242-241	27.00"	1.90"	.109	304LSS
TSL-242-461	27.00"	1.50"	.120	316LSS
TSL-243-141	30.00"	1.90"	.065	304LSS
TSL-243-241	30.00"	1.90"	.109	304LSS
TSL-243-461	30.00"	1.50"	.120	316LSS
TSL-244-141	36.00"	1.90"	.065	304LSS
TSL-244-241	36.00"	1.90"	.109	304LSS
TSL-244-461	36.00"	1.50"	.120	316LSS

Standard Pool Ladder (3 Tread, 20" ABS)



Part Number	Depth	OD	Wall	Material
TSL-341-141	25.00"	1.90"	.065	304LSS
TSL-341-241	25.00"	1.90"	.109	304LSS
TSL-341-461	25.00"	1.50"	.120	316LSS
TSL-342-141	27.00"	1.90"	.065	304LSS
TSL-342-241	27.00"	1.90"	.109	304LSS
TSL-342-461	27.00"	1.50"	.120	316LSS
TSL-343-141	30.00"	1.90"	.065	304LSS
TSL-343-241	30.00"	1.90"	.109	304LSS
TSL-343-461	30.00"	1.50"	.120	316LSS
TSL-344-141	36.00"	1.90"	.065	304LSS
TSL-344-241	36.00"	1.90"	.109	304LSS
TSL-344-461	36.00"	1.50"	.120	316LSS

Standard Pool Ladder (4 Tread, 20" ABS)



Part Number	Depth	OD	Wall	Material
TSL-441-141	25.00"	1.90"	.065	304LSS
TSL-441-241	25.00"	1.90"	.109	304LSS
TSL-441-461	25.00"	1.50"	.120	316LSS
TSL-442-141	27.00"	1.90"	.065	304LSS
TSL-442-241	27.00"	1.90"	.109	304LSS
TSL-442-461	27.00"	1.50"	.120	316LSS
TSL-443-141	30.00"	1.90"	.065	304LSS
TSL-443-241	30.00"	1.90"	.109	304LSS
TSL-443-461	30.00"	1.50"	.120	316LSS
TSL-444-141	36.00"	1.90"	.065	304LSS
TSL-444-241	36.00"	1.90"	.109	304LSS
TSL-444-461	36.00"	1.50"	.120	316LSS

POOL LADDERS

TRUPRO



Standard Pool Ladder (5 Tread, 20" ABS)

Part Number	Depth	OD	Wall	Material
TSL-541-141	25.00"	1.90"	.065	304LSS
TSL-541-241	25.00"	1.90"	.109	304LSS
TSL-541-461	25.00"	1.50"	.120	316LSS
TSL-542-141	27.00"	1.90"	.065	304LSS
TSL-542-241	27.00"	1.90"	.109	304LSS
TSL-542-461	27.00"	1.50"	.120	316LSS
TSL-543-141	30.00"	1.90"	.065	304LSS
TSL-543-241	30.00"	1.90"	.109	304LSS
TSL-543-461	30.00"	1.50"	.120	316LSS
TSL-544-141	36.00"	1.90"	.065	304LSS
TSL-544-241	36.00"	1.90"	.109	304LSS
TSL-544-461	36.00"	1.50"	.120	316LSS



Cross-Braced Pool Ladder (2 Tread, 20" ABS)

Part Number	Depth	OD	Wall	Material
TBL-241-141	25.00"	1.90"	.065	304LSS
TBL-241-241	25.00"	1.90"	.109	304LSS
TBL-241-461	25.00"	1.50"	.120	316LSS
TBL-242-141	27.00"	1.90"	.065	304LSS
TBL-242-241	27.00"	1.90"	.109	304LSS
TBL-242-461	27.00"	1.50"	.120	316LSS
TBL-243-141	30.00"	1.90"	.065	304LSS
TBL-243-241	30.00"	1.90"	.109	304LSS
TBL-243-461	30.00"	1.50"	.120	316LSS
TBL-244-141	36.00"	1.90"	.065	304LSS
TBL-244-241	36.00"	1.90"	.109	304LSS
TBL-244-461	36.00"	1.50"	.120	316LSS



Cross-Braced Pool Ladder (3 Tread, 20" ABS)

Part Number	Depth	OD	Wall	Material
TBL-341-141	25.00"	1.90"	.065	304LSS
TBL-341-241	25.00"	1.90"	.109	304LSS
TBL-341-461	25.00"	1.50"	.120	316LSS
TBL-342-141	27.00"	1.90"	.065	304LSS
TBL-342-241	27.00"	1.90"	.109	304LSS
TBL-342-461	27.00"	1.50"	.120	316LSS
TBL-343-141	30.00"	1.90"	.065	304LSS
TBL-343-241	30.00"	1.90"	.109	304LSS
TBL-343-461	30.00"	1.50"	.120	316LSS
TBL-344-141	36.00"	1.90"	.065	304LSS
TBL-344-241	36.00"	1.90"	.109	304LSS
TBL-344-461	36.00"	1.50"	.120	316LSS

POOL LADDERS

TRUPRO



Cross-Braced Pool Ladder (4 Tread, 20" ABS)

Part Number	Depth	OD	Wall	Material
TBL-441-141	25.00"	1.90"	.065	304LSS
TBL-441-241	25.00"	1.90"	.109	304LSS
TBL-441-461	25.00"	1.50"	.120	316LSS
TBL-442-141	27.00"	1.90"	.065	304LSS
TBL-442-241	27.00"	1.90"	.109	304LSS
TBL-442-461	27.00"	1.50"	.120	316LSS
TBL-443-141	30.00"	1.90"	.065	304LSS
TBL-443-241	30.00"	1.90"	.109	304LSS
TBL-443-461	30.00"	1.50"	.120	316LSS
TBL-444-141	36.00"	1.90"	.065	304LSS
TBL-444-241	36.00"	1.90"	.109	304LSS
TBL-444-461	36.00"	1.50"	.120	316LSS



Cross-Braced Pool Ladder (5 Tread, 20" ABS)

Part Number	Depth	OD	Wall	Material
TBL-541-141	25.00"	1.90"	.065	304LSS
TBL-541-241	25.00"	1.90"	.109	304LSS
TBL-541-461	25.00"	1.50"	.120	316LSS
TBL-542-141	27.00"	1.90"	.065	304LSS
TBL-542-241	27.00"	1.90"	.109	304LSS
TBL-542-461	27.00"	1.50"	.120	316LSS
TBL-543-141	30.00"	1.90"	.065	304LSS
TBL-543-241	30.00"	1.90"	.109	304LSS
TBL-543-461	30.00"	1.50"	.120	316LSS
TBL-544-141	36.00"	1.90"	.065	304LSS
TBL-544-241	36.00"	1.90"	.109	304LSS
TBL-544-461	36.00"	1.50"	.120	316LSS

EXPLORE CUSTOM RAIL OPTIONS

View detailed custom rail drawings, measurements, and product information in seconds.

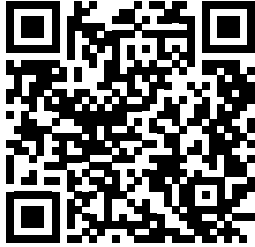
Scan the QR code and head to the **"Download Center"** tab to browse all documentation.



POOL LIFTS



RANGER 2 PRO POOL SERIES



U.S. Patent Nos.
7,249,386 B2 & D507,769 S



ORDERING INFO:

CHOOSE YOUR LIFT TO MATCH YOUR DECOR

F-RNGR2	Ranger 2 Lift - White/Blue
F-RNGR2-T	Ranger 2 Lift - White/Tan
F-RNGR2-G	Ranger 2 Lift - White/Gray
F-RNGR2-W	Ranger 2 Lift - White/Granite White
F-RNGR2-C	Ranger 2 Lift - Choose Colors

CHOOSE YOUR ANCHORING SYSTEM

F-04CAJP	Standard Anchor Kit
F-046QAB-AT1	Standard Anchor Kit with Quick Knobs
F-08CAJP	Paver Anchor Kit
F-40220-AT1	Wood Deck Anchor Kit
F-PPEBP	Anchor Ext. Set Back Plate (23" or 26")
F-PPEBP90	Anchor Ext. Rotated 90° (23" or 26")
F-UAPPS	Universal Anchor Adapter Plate
F-04AAA	Anchor Adapter Plate

ACCESSORIZE YOUR LIFT

F-AACA	Adjustable Height Seat Assembly
F-SLR	Solar Panel - Universal
F-422PLH-2	Headrest Assembly
F-423CS	Chest Strap

PROTECT YOUR INVESTMENT

F-428HT	Transport Cart
F-120PPC	Blue Cover
F-120PPC-B-HE	Blue Cover - Premium
F-120PPC-T	Tan Cover
F-120PPC-G	Gray Cover

APPLICATIONS:

In-ground pools with flat decks
19" (48 cm) maximum setback
Single out and down motion
Does not clear high walls or curbs

FEATURES:

ADA compliant & UL Safety Certified
350 lb (160 kg) weight capacity
Adjustable base plate
Field reversible
Stainless steel construction with powder coat finish
Limited five (5) year warranty
Includes 24v rechargeable battery and charger
Ships common carrier, some assembly required
Made in USA



HAVE AN
EXISTING ANCHOR?
ASK ABOUT
OUR ADAPTER
PLATES!

ADMIRAL PRO POOL SERIES



U.S. Patent Nos.
7,249,386 B2 & D507,769 S

ORDERING INFO:

CHOOSE YOUR LIFT TO MATCH YOUR DECOR

F-ADMRL	Admiral Lift - White/Blue
F-ADMRL-T	Admiral Lift - White/Tan
F-ADMRL-G	Admiral Lift - White/Gray
F-ADMRL-W	Admiral Lift - White/Granite White
F-ADMRL-C	Admiral Lift - Choose Colors

CHOOSE YOUR ANCHORING SYSTEM

F-04CAJP	Standard Anchor Kit
F-046QAB-AT1	Standard Anchor Kit with Quick Knobs
F-08CAJP	Paver Anchor Kit
F-40220-AT1	Wood Deck Anchor Kit
F-PPEBP	Anchor Ext. Set Back Plate (23" or 26")
F-PPEBP90	Anchor Ext. Rotated 90° (23" or 26")
F-UAPPS	Universal Anchor Adapter Plate
F-04AAA	Anchor Adapter Plate

ACCESSORIZE YOUR LIFT

F-SLR	Solar Panel - Universal
F-422PLH-2	Headrest Assembly
F-423CS	Chest Strap

PROTECT YOUR INVESTMENT

F-428HT	Transport Cart
F-120PPC	Blue Cover
F-120PPC-B-HE	Blue Cover - Premium
F-120PPC-T	Tan Cover
F-120PPC-G	Gray Cover

APPLICATIONS:

In-ground pools with flat decks
19" (48cm) maximum anchor set back
Single out and down motion
Does not clear high walls or curbs

FEATURES:

ADA Compliant & UL Safety Certified
450 lb (204 kg) weight capacity
Adjustable base plate & seat height
Field reversible
Stainless steel construction with powder coat finish
Limited five (5) year warranty
Includes 24v rechargeable battery and charger
Ships common carrier, some assembly required
Made in USA



HAVE AN
EXISTING ANCHOR?
ASK ABOUT
OUR ADAPTER
PLATES!

PORTABLE PRO POOL 2

PRO POOL SERIES



U.S. Patent No. D507,769 S

ORDERING INFO:

CHOOSE YOUR LIFT TO MATCH YOUR DECOR

F-PPP2	Portable Pro 2 Lift - White/Blue
F-PPP2-T	Portable Pro 2 Lift - White/Tan
F-PPP2-G	Portable Pro 2 Lift - White/Gray
F-PPP2-C	Portable Pro 2 Lift - Choose Colors

**Ballast tank not available in granite colors.*

ACCESSORIZE YOUR LIFT

F-422PLH-2	Headrest Assembly
F-423CS	Chest Strap
F-PPP2CW	Concrete Weight Counter Balance

PROTECT YOUR INVESTMENT

F-120PPC	Blue Cover
F-120PPC-B-HE	Blue Cover - Premium
F-120PPC-T	Tan Cover
F-120PPC-G	Gray Cover



APPLICATIONS:

In-ground pools with flat decks
6" (15cm) maximum set back
Single out and down motion
Does not clear high walls or curbs

FEATURES:

350 lb (160 kg) weight capacity
No anchor required
Available in sand or concrete counterweight options
Stainless steel construction with powder coat finish
Limited five (5) year warranty
Includes 24v rechargeable battery and charger
Ships common carrier, some assembly required
Made in USA



MIGHTY VOYAGER MIGHTY SERIES



U.S. Patent No. D507,769S

ORDERING INFO:

CHOOSE YOUR LIFT TO MATCH YOUR DECOR

F-VGRPL	Mighty Voyager Lift - White/Blue
F-VGRPL-T	Mighty Voyager Lift - White/Tan
F-VGRPL-G	Mighty Voyager Lift - White/Gray
F-VGRPL-C	Mighty Voyager Lift - Choose Colors

ACCESSORIZE YOUR LIFT

F-SLR	Solar Panel - Universal
F-422PLH-2	Headrest Assembly
F-423CS	Chest Strap
F-MTYSLS	Sling Seat Assembly
F-734RSA	Spine Board Assembly

PROTECT YOUR INVESTMENT

F-MTLCB	Blue Cover
F-MTLCB-HE	Blue Cover - Premium
F-MTLCT	Tan Cover
F-MTLCG	Gray Cover

APPLICATIONS:

In-ground and partially raised pools and spas
Clearances up to 10" (25 cm) high
32" (81 cm) maximum setback

FEATURES:

ADA Compliant & UL Safety Certified
ADA Fixing Kit included for ADA compliance
325 lb (147 kg) weight capacity
255 degree rotation
Adjustable seat height
Sand ballast counter weight (sand not included)
Includes 24v rechargeable battery and charger
Stainless steel construction with powder coat finish
Limited five (5) year warranty
Ships common carrier, some assembly required
Made in USA



MIGHTY 400 MIGHTY SERIES



U.S. Patent No. 10,792,203



ORDERING INFO:

CHOOSE YOUR LIFT TO MATCH YOUR DECOR

F-MTY400	Mighty 400 Lift - White/Blue
F-MTY400-T	Mighty 400 Lift - White/Tan
F-MTY400-G	Mighty 400 Lift - White/Gray
F-MTY400-W	Mighty 400 Lift - White/Granite White
F-MTY400-C	Mighty 400 Lift - Choose Colors

CHOOSE YOUR ANCHORING SYSTEM

F-808SA	Standard Anchor Kit
F-808SA-10	Paver Anchor Kit
F-77SSA	Semi-Recessed Concrete Anchor Kit
F-842SWDA	Wood Deck Anchor Kit

**Anchor adapters available for retrofit in existing anchor systems.*

ACCESSORIZE YOUR LIFT

F-423CS	Chest Strap
F-422PLH-2	Headrest Assembly
F-SLR	Solar Panel - Universal
F-MTYSLS	Sling Seat Assembly
F-734RSA	Spine Board Assembly

PROTECT YOUR INVESTMENT

F-MTTC	Transport Cart*
F-MTLCB	Blue Cover
F-MTLCB-HE	Blue Cover - Premium
F-MTLCT	Tan Cover
F-MTLCG	Gray Cover

**Not for use with semi-recessed anchor.*



APPLICATIONS:

In-ground and partially raised pools and spas (with pedestal)
Clearances up to 50" (127 cm) with optional pedestal mount
44" (111" cm) maximum setback

FEATURES:

ADA Compliant & UL Safety Certified
400 lb (181 kg) weight capacity
360 degree direct drive rotation
Adjustable seat height and footrest
Stainless steel construction with powder coat finish
Limited five (5) year warranty
Includes 24v rechargeable battery and charger
Ships common carrier, some assembly required
Made in USA

HAVE AN
EXISTING ANCHOR?
ASK ABOUT
OUR ADAPTER
OPTIONS!

ASK
ABOUT OUR
PEDESTAL
OPTIONS



Innovative Aquatic Access Solutions

+1-406-549-0769 | 888-687-3552 | aquacreek.com | sales@aquacreek.com

MIGHTY 600 MIGHTY SERIES



U.S. Patent No. 10,792,203



APPLICATIONS:

In-ground and partially raised pools and spas (with pedestal)
Clearances up to 50" (127 cm) with optional pedestal mount
44" (111" cm) maximum setback

FEATURES:

ADA Compliant & UL Safety Certified
600 lb (272 kg) weight capacity
360 degree direct drive rotation
Wider 22" seat for added comfort
Adjustable seat height and footrest
Stainless steel construction with powder coat finish
Limited five (5) year warranty
Includes 24v rechargeable battery and charger
Ships common carrier, some assembly required
Made in USA

ORDERING INFO:

CHOOSE YOUR LIFT TO MATCH YOUR DECOR

F-MTY600	Mighty 600 Lift - White/Blue
F-MTY600-T	Mighty 600 Lift - White/Tan
F-MTY600-G	Mighty 600 Lift - White/Gray
F-MTY600-W	Mighty 600 Lift - White/Granite White
F-MTY600-C	Mighty 600 Lift - Choose Colors

CHOOSE YOUR ANCHORING SYSTEM

F-808SA	Standard Anchor Kit
F-808SA-10	Paver Anchor Kit
F-77SSA	Semi-Recessed Concrete Anchor Kit
F-842SWDA	Wood Deck Anchor Kit

**Anchor adapters available for retrofit in existing anchor systems.*

ACCESSORIZE YOUR LIFT

F-423CS	Chest Strap
F-422PLH-2	Headrest Assembly
F-SLR	Solar Panel - Universal
F-MTYSLS	Sling Seat Assembly
F-734RSA	Spine Board Assembly

PROTECT YOUR INVESTMENT

F-MTTC	Transport Cart*
F-MTLCB	Blue Cover
F-MTLCB-HE	Blue Cover - Premium
F-MTLCT	Tan Cover
F-MTLCG	Gray Cover

**Not for use with semi-recessed anchor.*



HAVE AN
EXISTING ANCHOR?
ASK ABOUT
OUR ADAPTER
OPTIONS!

ASK
ABOUT OUR
PEDESTAL
OPTIONS



REVOLUTION XL

REVOLUTION SERIES



ORDERING INFO:

CHOOSE YOUR LIFT TO MATCH YOUR DECOR

F-REVXL	Revolution XL Lift - White/Blue
F-REVXL-T	Revolution XL Lift - White/Tan
F-REVXL-G	Revolution XL Lift - White/Gray
F-REVXL-W	Revolution XL Lift - White/Granite White
F-REVXL-C	Revolution XL Lift - Choose Colors

CHOOSE YOUR ANCHORING SYSTEM

F-808SA	Standard Anchor Kit
F-808SA-10	Paver Anchor Kit
F-77SSA	Semi-Recessed Concrete Anchor Kit
F-842SWDA	Wood Deck Anchor Kit

**Anchor adapters available for retrofit in existing anchor systems.*

ACCESSORIZE YOUR LIFT

F-423CS	Chest Strap
F-422PLH-2	Headrest Assembly
F-806SLS	Sling Seat Assembly
F-SLR	Solar Charger
F-734RSA	Spine Board Assembly

PROTECT YOUR INVESTMENT

F-MTTC	Transport Cart*
F-720SSC	Blue Cover
F-720SSC-B-HE	Blue Cover - Premium
F-720SSC-T	Tan Cover
F-720SSC-G	Gray Cover

**Not for use with semi-recessed anchor.*

OTHER

F-REVXL-DD	Revolution XL Deep Draft - White/Blue
------------	---------------------------------------

**Available in all standard colors and options.*



APPLICATIONS:

In-ground and partially raised pools and spas
Clearances up to 22" (56 cm)
Maximum setback 50" (127 cm)

FEATURES:

ADA Compliant & UL Safety Certified
500 lbs (226 kg) weight capacity
360 degree direct drive rotation
Adjustable seat height and footrest
Stainless steel construction with powder coat finish
Limited five (5) year warranty
Includes 24v rechargeable battery and charger
Ships common carrier, some assembly required
Made in USA

COMES IN A
**DEEP DRAFT
VERSION**
FOR SPECIAL
APPLICATIONS

HAVE AN
EXISTING ANCHOR?
**ASK ABOUT
OUR ADAPTER
OPTIONS!**



SCOUT EXCEL REVOLUTION SERIES



U.S. Patent Nos.
7,249,386 B2 & D507,769 S

APPLICATIONS:

In-ground and partially raised pools and spas
Clearances up to 27" (68 cm)
Maximum setback 44" (111" cm)

FEATURES:

ADA Compliant & UL Safety Certified
375 lb (170 kg) weight capacity
360 degree direct drive rotation
Adjustable seat height & footrest
Stainless steel construction with powder coat finish
Limited five (5) year warranty
Includes 24v rechargeable battery and charger
Ships common carrier, some assembly required
Made in USA



HAVE AN
EXISTING ANCHOR?
ASK ABOUT
OUR ADAPTER
OPTIONS!

ORDERING INFO:

CHOOSE YOUR LIFT TO MATCH YOUR DECOR

F-SCTXL	Scout Excel Lift - White/Blue
F-SCTXL-T	Scout Excel Lift - White/Tan
F-SCTXL-G	Scout Excel Lift - White/Gray
F-SCTXL-W	Scout Excel Lift - White/Granite White
F-SCTXL-C	Scout Excel Lift - Choose Colors

CHOOSE YOUR ANCHORING SYSTEM

F-808SA	Standard Anchor Kit
F-808SA-10	Paver Anchor Kit
F-77SSA	Semi-Recessed Concrete Anchor Kit
F-842SWDA	Wood Deck Anchor Kit

**Anchor adapters available for retrofit in existing anchor systems.*

ACCESSORIZE YOUR LIFT

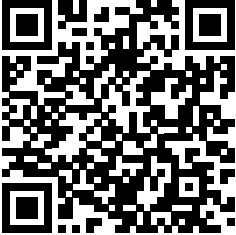
F-423CS	Chest Strap
F-422PLH-2	Headrest Assembly
F-806SLS	Sling Seat Assembly
F-SLR	Solar Charger
F-734RSA	Spine Board Assembly

PROTECT YOUR INVESTMENT

F-MTTC	Transport Cart*
F-450SSC	Blue Cover
F-450SSC-B-HE	Blue Cover - Premium
F-450SSC-T	Tan Cover
F-450SSC-G	Gray Cover

**Not for use with semi-recessed anchor.*

NEBULA SPA SERIES



U.S. Patent No. D507,769S

ORDERING INFO:

PRODUCT NUMBER

F-NBLA	Nebula Lift - White
--------	---------------------

**This lift does not come with standard color options*

CHOOSE YOUR ANCHORING SYSTEM

F-ASTSPA	Standard Anchor Kit
F-AWDSPA	Wood Deck Anchor Kit
F-APVSPA	Paver Deck Anchor Kit
F-AJSPA	Jig Tool

ACCESSORIZE YOUR LIFT

F-423CS	Chest Strap
F-0320HSO-4C	Hard Seat Option
F-SLR	Solar Panel - Universal
F-PRKNBLA	Power Rotate Option for Nebula

PROTECT YOUR INVESTMENT

F-440HBC-B	Blue Cover
F-440HBC-B-HE	Blue Cover - Premium
F-440HBC-T	Tan Cover
F-440HBC-G	Gray Cover

OTHER

F-NBLA-NNO	Nebula Nano
------------	-------------



APPLICATIONS:

Above-ground pools and spas
Clearances from 16" to 60+" (152 cm)

FEATURES:

400 lb (181 kg) weight capacity
360 degree rotation
Adjustable seat height
Stainless steel construction with powder coat finish
Limited five (5) year warranty
Includes 24v rechargeable battery and charger
Ships common carrier, some assembly required
Made in USA

LIMITED
OVERHEAD
CLEARANCE?
ASK ABOUT
OUR NANO
LIFTS!

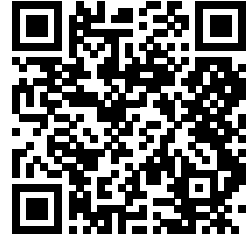
NEED POWER
ROTATING LIFT?
ASK ABOUT
OUR UPGRADE
KIT!



Innovative Aquatic Access Solutions

+1-406-549-0769 | 888-687-3552 | aquacreek.com | sales@aquacreek.com

NEPTUNE SPA SERIES



U.S. Patent No. D507,769S

ORDERING INFO:

CHOOSE YOUR LIFT TO MATCH YOUR DECOR

F-NPTN	Neptune Lift - White/Blue
F-NPTN-T	Neptune Lift - White/Tan
F-NPTN-G	Neptune Lift - White/Gray
F-NPTN-W	Neptune Lift - White/White
F-NPTN-C	Neptune Lift - Choose Colors

CHOOSE YOUR ANCHORING SYSTEM

F-ASTSPA	Standard Anchor Kit
F-AWDSPA	Wood Deck Anchor Kit
F-APVSPA	Paver Deck Anchor Kit
F-AJSPA	Jig Tool

ACCESSORIZE YOUR LIFT

F-422PLH-2	Headrest Assembly
F-423CS	Chest Strap
F-SLR	Solar Panel - Universal

PROTECT YOUR INVESTMENT

F-450SLECS	Blue Cover
F-450SLECS-B-HE	Blue Cover - Premium
F-450SLECS-T	Tan Cover
F-450SLECS-G	Gray Cover

OTHER

F-NPTN-NN0	Neptune Nano
------------	--------------

APPLICATIONS:

Above-ground pools and spas
Clearances from 16" to 68" (172 cm)

FEATURES:

ADA Compliant & UL Safety Certified
400 lb (181 kg) weight capacity
360 degree rotation
Adjustable seat height
Stainless steel construction with powder coat finish
Limited five (5) year warranty
Includes 24v rechargeable battery and charger
Ships common carrier, some assembly required
Made in USA



LIMITED
OVERHEAD
CLEARANCE?
ASK ABOUT
OUR NANO
LIFTS!

POWER EZ 2 EZ SERIES



ORDERING INFO:

PRODUCT NUMBER*

F-PEZPL2

Power EZ 2 Lift - White

*This lift does not come with standard color options

CHOOSE YOUR ANCHORING SYSTEM

F-033EZA	Standard Anchor Kit
F-30220	Paver Anchor Kit
F-035EZSM	Surface Mount Anchor Kit
F-30600	Wood Deck Anchor Kit
F-EXT12	12" Anchor Extension Arm
F-EXT24	24" Anchor Extension Arm
F-EXT30	30" Anchor Extension Arm

ACCESSORIZE & PROTECT YOUR LIFT

F-03EZHB4P	4-Point Hanger Bar
F-0320HSO-4C	Hard Seat Option
F-SLR	Universal Solar Charger
F-EZBL-C	Blue Cover
F-EZBL-B-HE	Blue Cover - Premium
F-EZBL-CG	Gray Cover
F-EZBL-CT	Tan Cover
F-440EZHSC	Blue Cover - For Hard Seat Option



APPLICATIONS:

In-ground and partially raised pools and spas
Clearances up to 15" (38 cm)
Manual rotation requires assistance from others

FEATURES:

400 lb (181 kg) weight capacity
360 degree manual rotation with battery operated lifting
Adjustable stainless steel chains
Stainless steel construction with powder coat finish
*Comes with standard sling seat option
Includes 24v rechargeable battery and charger
**Limited five (5) year warranty
Ships small parcel carrier, some assembly required
Made in USA

*Sling seats available in different sizes. Seat belt options also available.
**One year warranty on sling.



ASK
ABOUT OUR
HARD SEAT
OPTION

ACCESS & TRAINING



ACCESS & TRAINING

PVC PRODUCTS

POOL ACCESS CHAIRS



ORDERING INFO:

ITEM #	PRODUCT	WEIGHT CAPACITY	BETWEEN ARMS
F-520SPM	Pool Access Chair	300 lbs	18"
F-520WSPM	Pool Access Chair	350 lbs	21"
F-520XWSPM	Pool Access Chair	400 lbs	24"



FEATURES:

- Furniture-grade PVC
- Swing out arm rests
- Stainless steel hardware
- UV resistant fabric
- Limited one (1) year warranty
- Ships small parcel, some assembly required
- Made in USA

THE AQUA WALKER



ORDERING INFO:

PRODUCT NUMBER

F-605UW	Aqua Walker
---------	-------------



FEATURES:

- 300 lb (136 kg) weight capacity
- Durable UV and chemical resistant HDPE plastic armrests
- 22" (55 cm) wide
- Adjustable height – 34" (86 cm) to 48" (122 cm)
- Limited one (1) year warranty
- Ships small parcel carrier, some assembly required
- Made in USA

ACCESS & TRAINING PVC PRODUCTS

SWIM TRAINING PLATFORM



ORDERING INFO:

PRODUCT NUMBER

F-250TTP

Swim Training Platform

ACCESSORIES

F-220EL

Extended Leg Option - 20.5" to 26.5" (52 -67 cm) wide

F-203CT

Rubber Foot Pad



FEATURES:

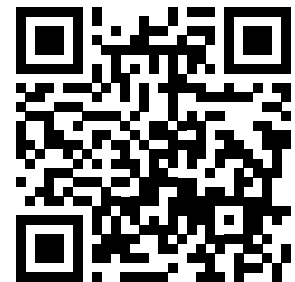
300 lb (136 kg) weight capacity
36" x 60" (91 cm x 152 cm) fade resistant polypropylene platform deck
Skid resistant and barefoot friendly
Adjustable height – 16.5" (42 cm) to 22.5" (57 cm)
Limited one (1) year warranty
Ships common carrier, some assembly required
Made in USA



EXPLORE MORE WITH ONE SCAN

Access our full product catalog, detailed guides, and specifications instantly.

Just scan the QR code to browse everything Aqua Creek Products has to offer—right from your phone.





Aqua Creek Products

— Innovative Aquatic Access Solutions —



intertek



ANSI National Accreditation Board

ACCREDITED

ISO/IEC 17021-1

MANAGEMENT SYSTEMS
CERTIFICATION BODY

STAY IN TOUCH

Toll Free: 1-888-687-3552 · Local: +1-406-549-0769 · Fax: +1-406-541-8958

9889 Garrymore Lane, Missoula, Montana 59808

sales@aquacreek.com · www.aquacreekproducts.com

SCAN FOR



DIGITAL COPY



Copyright © 2026 Aqua Creek Products, LLC. All Rights Reserved.