

OTHER

GRAB RAILS, STANCHION POSTS & ANCHORS



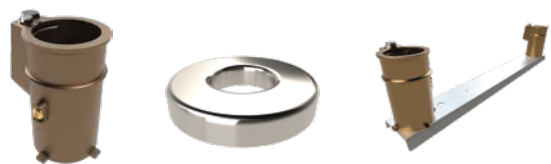
ADA GRAB RAILS

- Width: 12", 14", 16", or 18"
 - OD: 1.50"
- Wall Thickness: .120"
- Material: 316LSS
- Requires split escutcheon
- Flange (requires split escutcheons) or No Flange



STANCHION POSTS

- Heights: 54" or 96"
- OD: 1.90"
- Materials: 304SS or 316SS
- Sliding ring available in 316SS



ANCHORS AND HARDWARE

- Wedge Anchors: 1.50" or 1.90" ID, 4" or 6" depth
- Channel Anchor Kits: 1.50" or 1.90" ID, 4" depth, 8" or 20" length
- Stanchion Anchors: 1.50" or 1.90" ID, 6" depth
- Escutcheon Plates: 1.50" or 1.90" ID, 4.50" OD (316SS)
- Split Escutcheon Plate: 1.50" ID, 1.90", 4.125" OD (316SS)
- Set Screw Escutcheon: 1.50" ID, 1.90", 4.50" OD (316SS)

UNIQUE BENEFITS



STAINLESS STEEL

Select from 304L & 316L stainless steel.



SETBACKS & SIZES

Designed to fit a variety of pool decks.



CUSTOM & STANDARD

Flexible solutions to meet any projects needs.



ADA COMPLIANT

ADA Compliant for commercial requirements.



MADE IN MONTANA

Built with care and precision in the USA.



ISO CERTIFIED

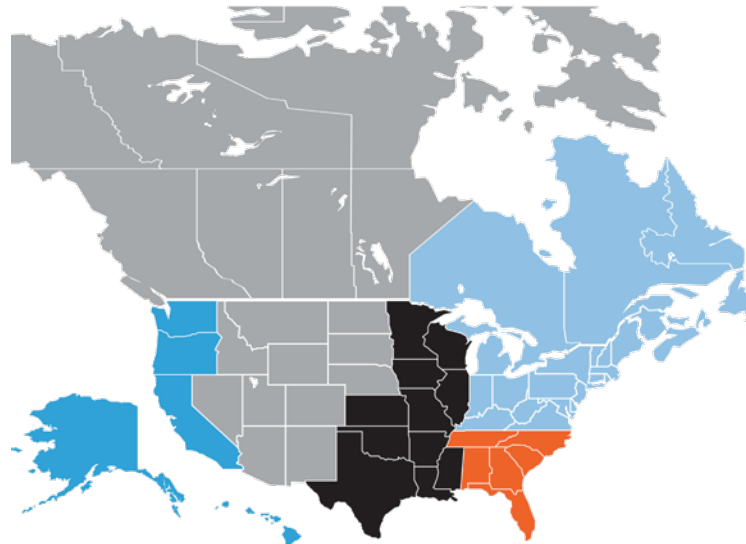
Intertek ISO 9001:2015 Certification

CUSTOM



Scan for more info!

OUR TEAM



SALES TERRITORIES

PACIFIC REGION

(406) 541-8985

salespacific@aquacreek.com

MOUNTAIN REGION

(406) 541-8429

salesmountain@aquacreek.com

CENTRAL REGION

(406) 541-8490

salescentral@aquacreek.com

NORTHEAST REGION

(406) 541-8984

salesnortheast@aquacreek.com

SOUTHEAST REGION

(406) 541-8311

salessoutheast@aquacreek.com

CUSTOMER SERVICE

(406) 549-0769

customerservice@aquacreek.com

aquacreek.com

HANDCRAFTED
★ IN MISSOULA
MONTANA
EST. 2002



STAY IN TOUCH

9889 Garrymore Lane
Missoula, Montana 59808

Local | 406.549.0769
Toll Free | 888.687.3552

www.aquacreek.com
sales@aquacreek.com



Scan here for more literature!



Aqua Creek Products



RAIL & LADDER GUIDE

INNOVATIVE
ACCESS
SOLUTIONS

PRETZEL

SOLD IN PAIRS

FIGURE 4

SOLD IN PAIRS

STAIR RAILS

SOLD INDIVIDUALLY

DECK RAILS

SOLD INDIVIDUALLY

LADDERS

SOLD INDIVIDUALLY



PRETZEL BEND RAILS

- Setbacks: 17", 26", or 30"
- OD Options: 1.50" or 1.90"
- Wall Thickness: .065", .109", or .120"
- Materials: 304LSS or 316LSS



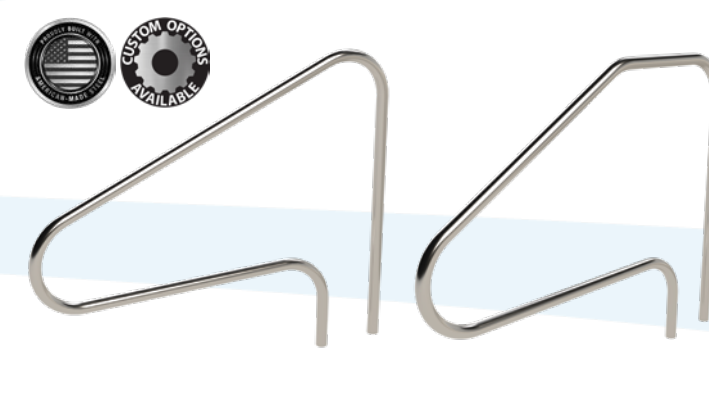
FIGURE 4 RAILS

- Setbacks: 26" or 30"
- OD Options: 1.50" or 1.90"
- Wall Thickness: .065", .109", or .120"
- Materials: 304LSS or 316LSS



2 BEND STAIR RAIL

- Total Width: 48", 60", or 72"
- OD Options: 1.50" or 1.90"
- Wall Thickness: .065", .109", or .120"
- Materials: 304LSS or 316LSS



3 AND 4 BEND DECK RAIL

- Total Width: 48" or 60"
- OD Options: 1.50" or 1.90"
- Wall Thickness: .065", .109", or .120"
- Materials: 304LSS or 316LSS



STANDARD POOL LADDERS

- Treads: 2, 3, 4, or 5
- Depths: 25", 27", 30", or 36"
- OD Options: 1.50" or 1.90"
- Wall Thickness: .065", .109", or .120"
- Materials: 304LSS or 316LSS
- Tread Options: Stainless or ABS (20")



PACIFIC PRETZEL BEND RAILS

- Setbacks: 26" or 30"
- OD Options: 1.50" or 1.90"
- Wall Thickness: .065", .109", or .120"
- Materials: 304LSS or 316LSS



ADJUSTABLE FIGURE 4 RAILS

- Setback: 26"
- OD Options: 1.50" or 1.90"
- Wall Thickness: .065", .109", or .120"
- Materials: 304LSS or 316LSS



3 BEND STAIR RAIL

- Total Width: 48", 60", or 72"
- OD Options: 1.50" or 1.90"
- Wall Thickness: .065", .109", or .120"
- Materials: 304LSS or 316LSS



LONG REACH DECK RAIL

- Total Width: 48" or 60"
- OD Options: 1.50" or 1.90"
- Wall Thickness: .065", .109", or .120"
- Materials: 304LSS or 316LSS



CROSS-BRACED POOL LADDERS

- Treads: 2, 3, 4, or 5
- Depths: 25", 27", 30", or 36"
- OD Options: 1.50" or 1.90"
- Wall Thickness: .065", .109", or .120"
- Materials: 304LSS or 316LSS
- Tread Options: Stainless or ABS (20")